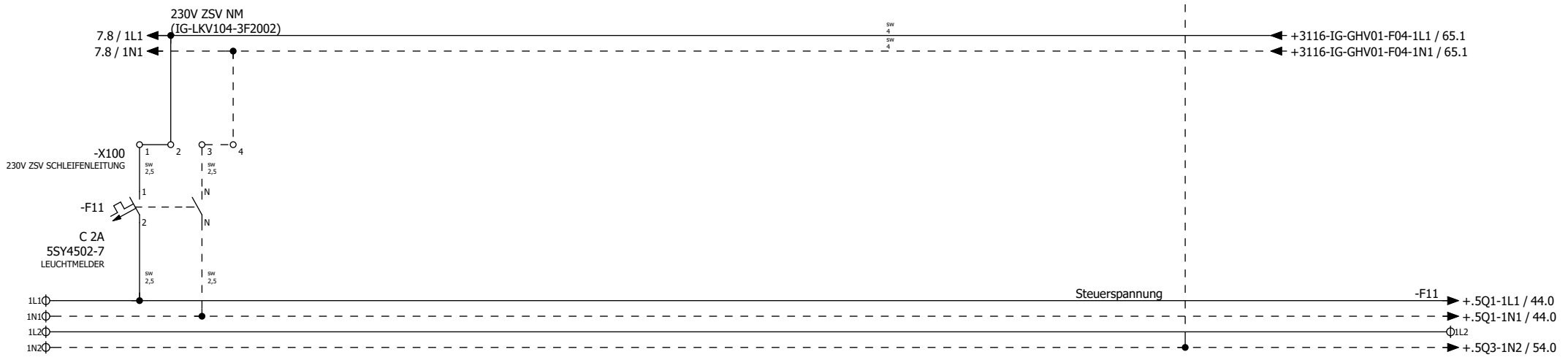
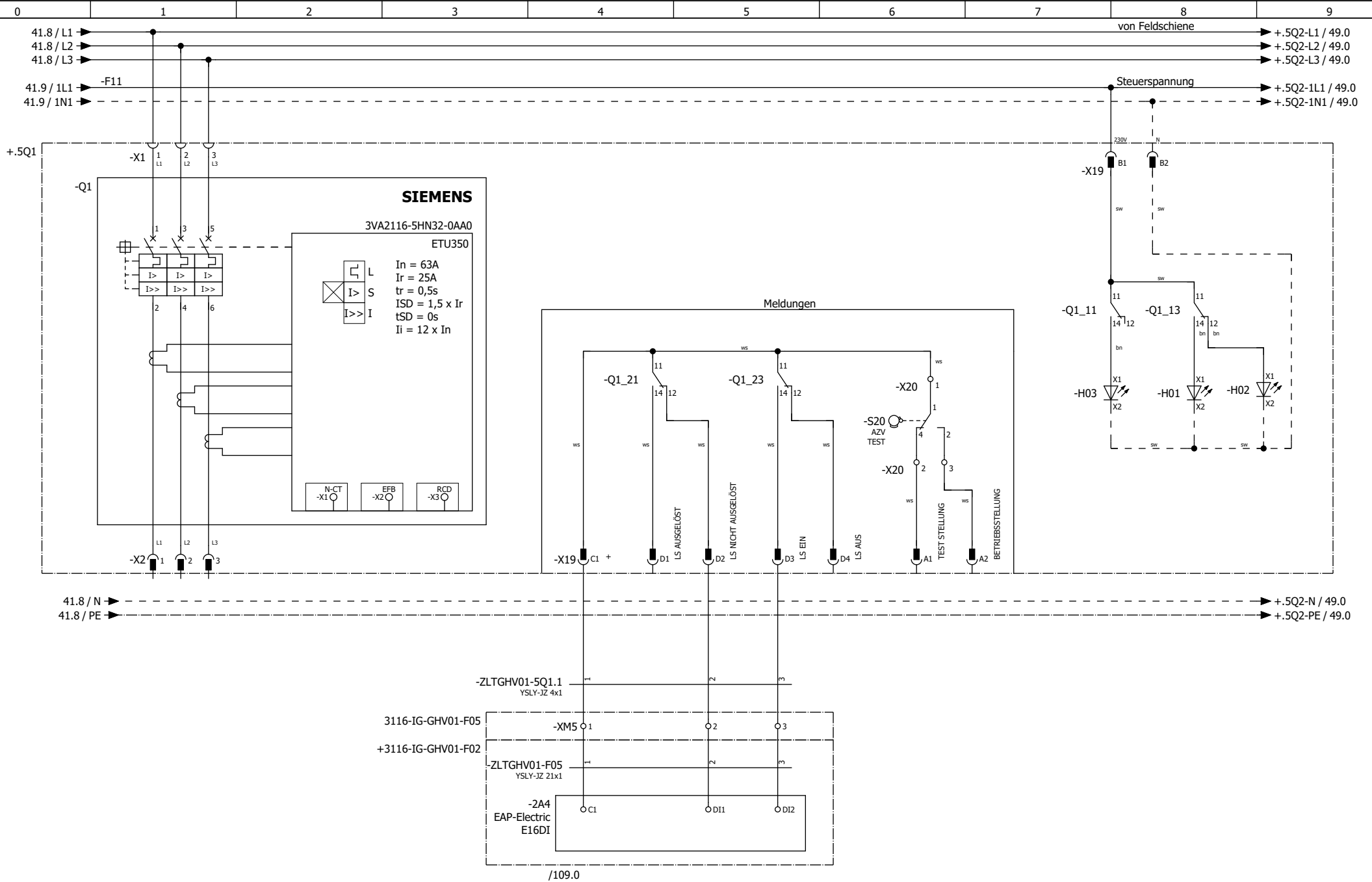


-XM5	01	02	03	04	05	06	07	08	09	10	11	12	13	14	15	16	17	18	19	20	21
	/109.0	/109.1	/109.1	/109.2	/109.2	/109.3	/109.3	/109.4	/109.4	/109.5	/109.5	/109.6	/109.6	/109.7	/109.7	/109.8	/109.8	/109.9	/109.9	/109.9	/109.9



			Sammelschienen		3116-IG-GHV01-F05		= 3116-IG-GHV01 + 3116-IG-GHV01-F05	
Änderung	Datum	Name					Blatt 41	
							Blatt 134	



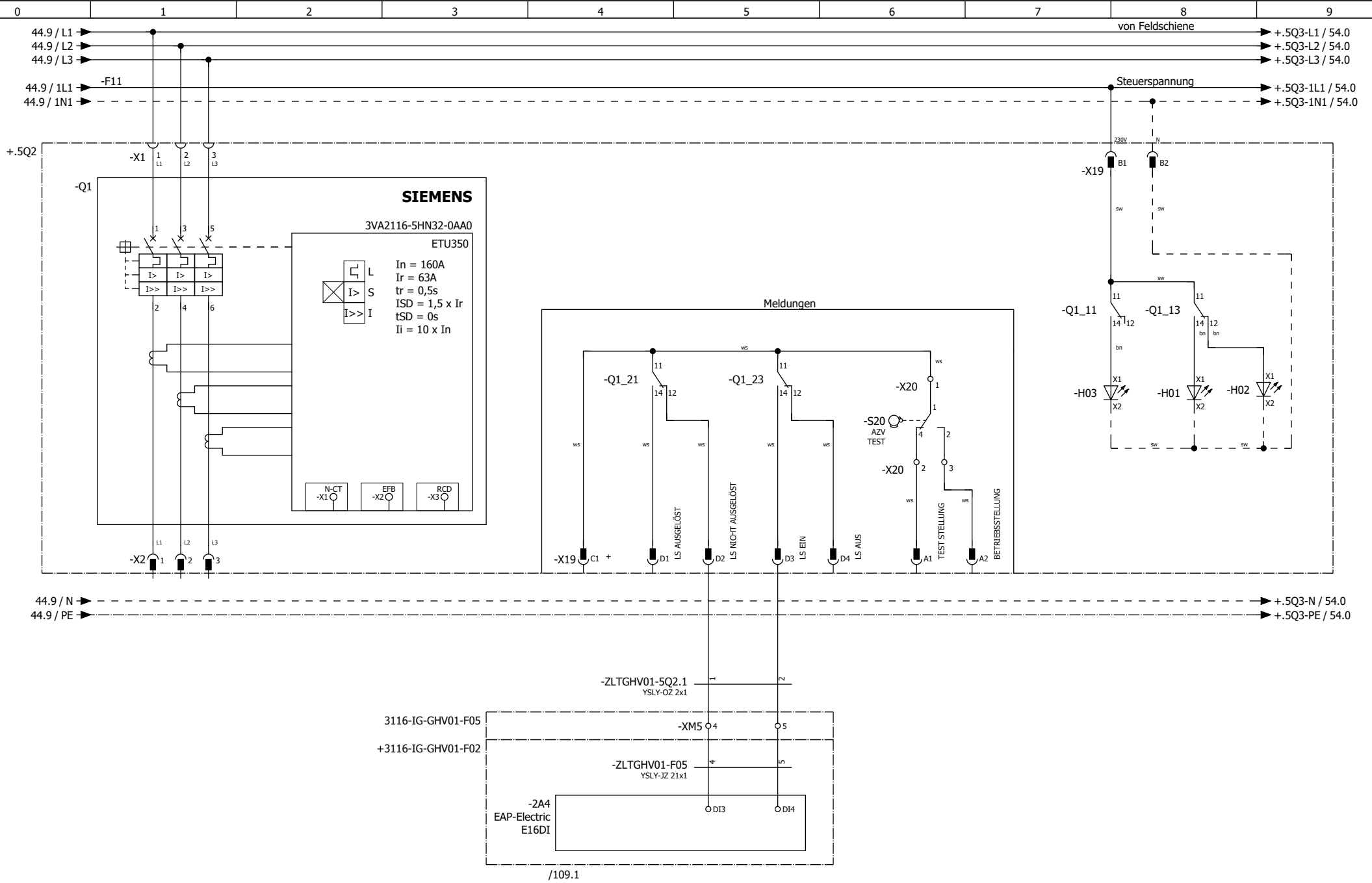
/109.0

Änderung	Datum	Name

SIVACON S8; 5Q1  
Reserve  
LS063AC20

3116-IG-GHV01-F05

= 3116-IG-GHV01  
+ 3116-IG-GHV01-F05.5Q1



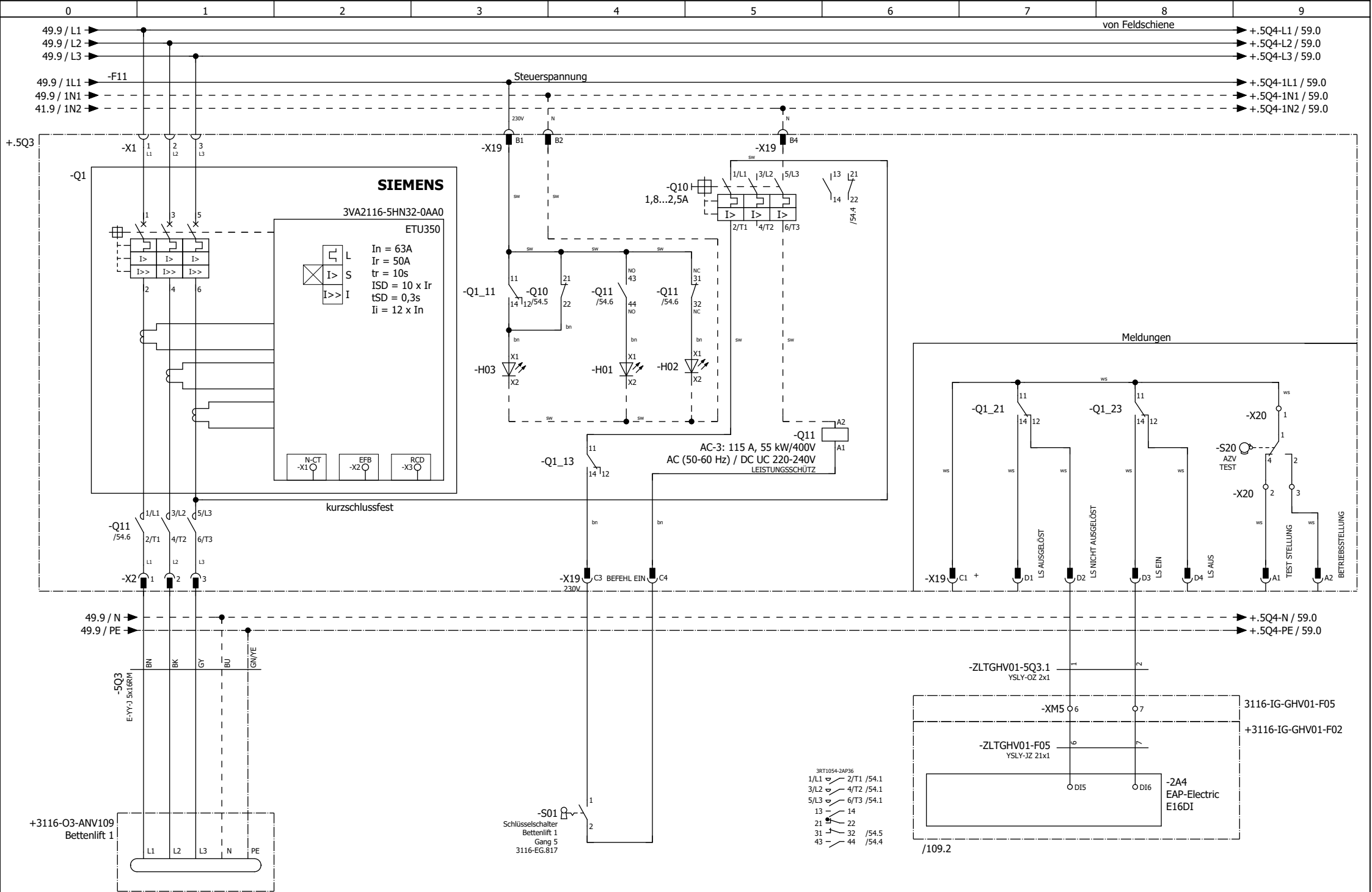
/109.1

Änderung	Datum	Name

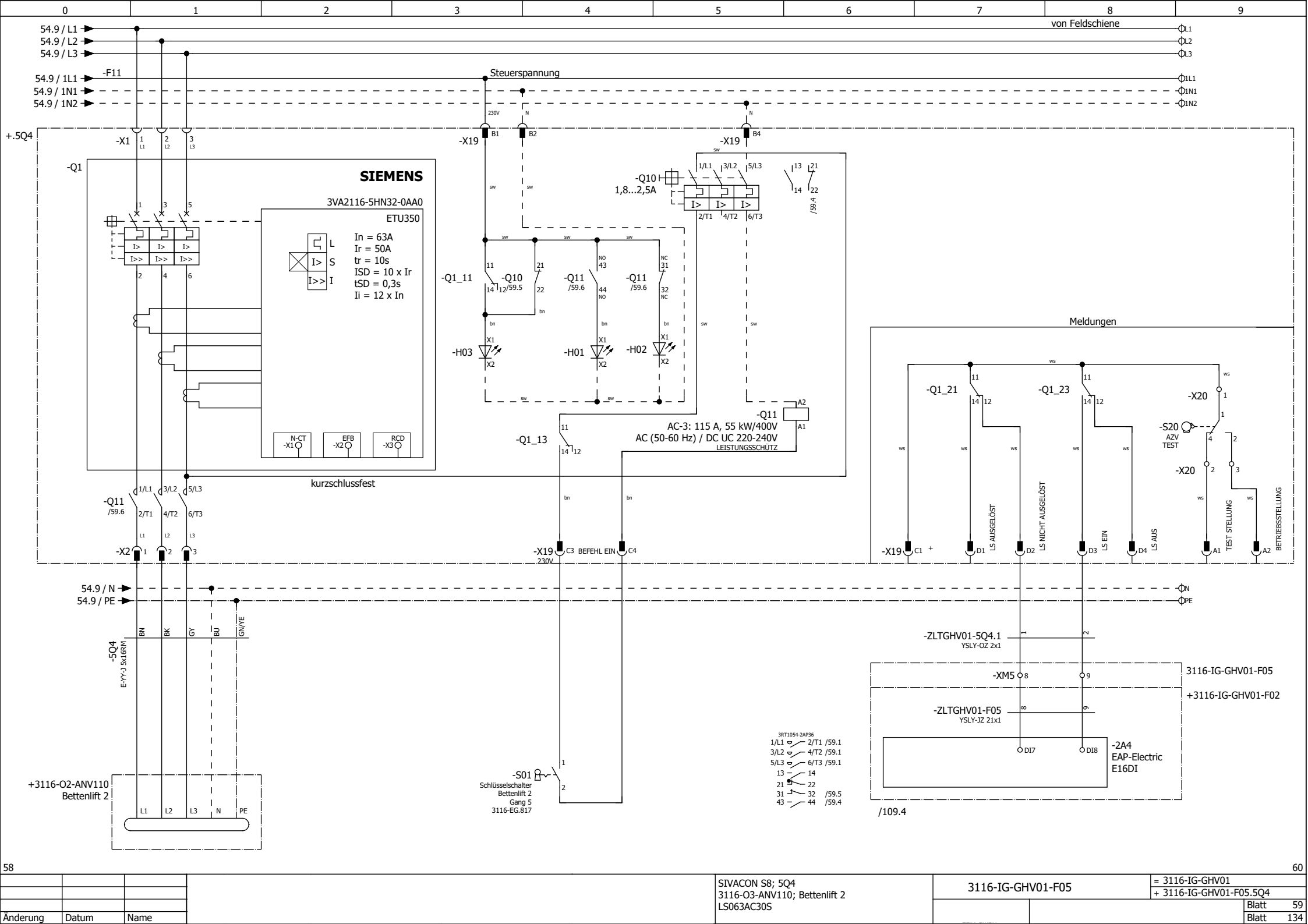
SIVACON S8; 5Q2  
Reserve  
LS160AC20

3116-IG-GHV01-F05

= 3116-IG-GHV01  
+ 3116-IG-GHV01-F05.5Q2



Änderung	Datum	Name	SIVACON S8; 5Q3 3116-03-ANV109; Bettenlift 1 LS063AC30S	3116-IG-GHV01-F05	= 3116-IG-GHV01 + 3116-IG-GHV01-F05.5Q3
					Blatt 54
					Blatt 138



**SIEMENS**

3VA2116-5HN32-0AA0

ETU350

$I_n = 63A$   
 $I_r = 50A$   
 $t_r = 10s$   
 $ISD = 10 \times I_r$   
 $tSD = 0,3s$   
 $I_i = 12 \times I_n$

N-CT  
 EFB  
 RCD

kurzschlussfest

Steuerspannung

-Q10  
1,8...2,5A

AC-3: 115 A, 55 kW/400V  
 AC (50-60 Hz) / DC UC 220-240V  
 LEISTUNGSSCHÜTZ

Meldungen

-ZLTGHV01-5Q4.1  
YSLY-OZ 2x1

-ZLTGHV01-F05  
YSLY-JZ 21x1

-XM5 8

3116-IG-GHV01-F05

+3116-IG-GHV01-F02

-2A4  
EAP-Electric  
E16DI

3RT1054-2AP36  
 1/L1 ↔ 2/T1 /59.1  
 3/L2 ↔ 4/T2 /59.1  
 5/L3 ↔ 6/T3 /59.1  
 13 ↔ 14  
 21 ↔ 22  
 31 ↔ 32 /59.5  
 43 ↔ 44 /59.4

-S01  
 Schüsselschalter  
 Bettenlift 2  
 Gang 5  
 3116-EG.817

/109.4

Änderung	Datum	Name	SIVACON S8; 5Q4 3116-03-ANV110; Bettenlift 2 LS063AC30S	3116-IG-GHV01-F05	= 3116-IG-GHV01 + 3116-IG-GHV01-F05.5Q4
					Blatt 59
					Blatt 139