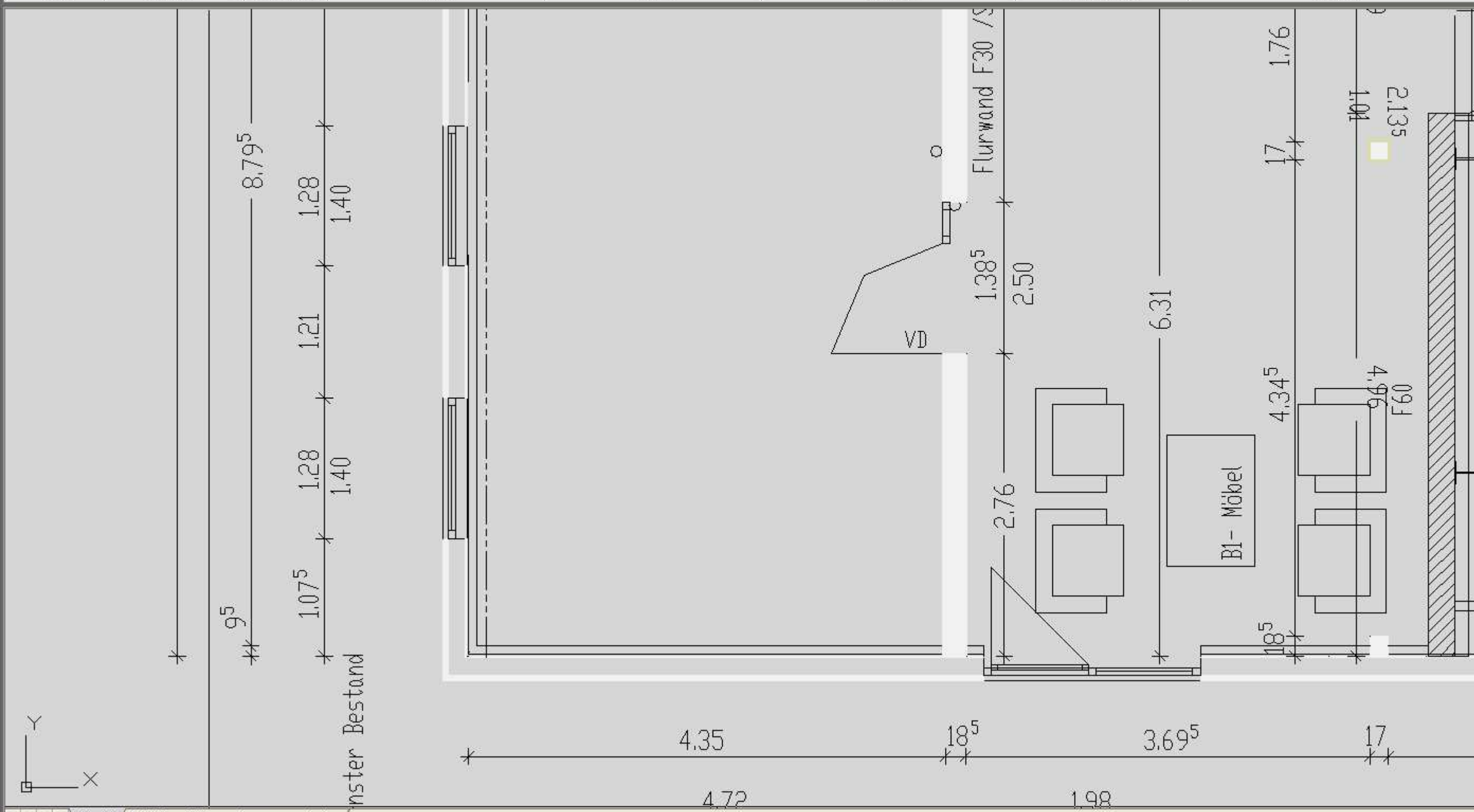


Files Open DWG Convert		Output Plot Preview		Navigation In		View 2D Wireframe Unsaved View Named Views		Layers Unsaved Layer State 0		Measure Measure Region/Mass Properties List Locate Point		Object Snap Endpoint		Window Switch Windows Tile Horizontally Tile Vertically Cascade User Interface	
----------------------------------	--	-------------------------------	--	-------------------------	--	--	--	---	--	---	--	--------------------------------	--	--	--



Model / A-5-G3 - 3.Obergeschoss gesamt 1_1...

Specify corner of window, enter a scale factor (nX or nXP), or [All/Center/Dynamic/Extents/Previous/Scale/Window/Object] <real time>: 2x