

# License Borrowing

## Agenda

---

- **What is License Borrowing?**
- **Utilizing License Borrowing?**
- **Limitations to License Borrowing?**
- **Questions?**

## License Borrowing

---

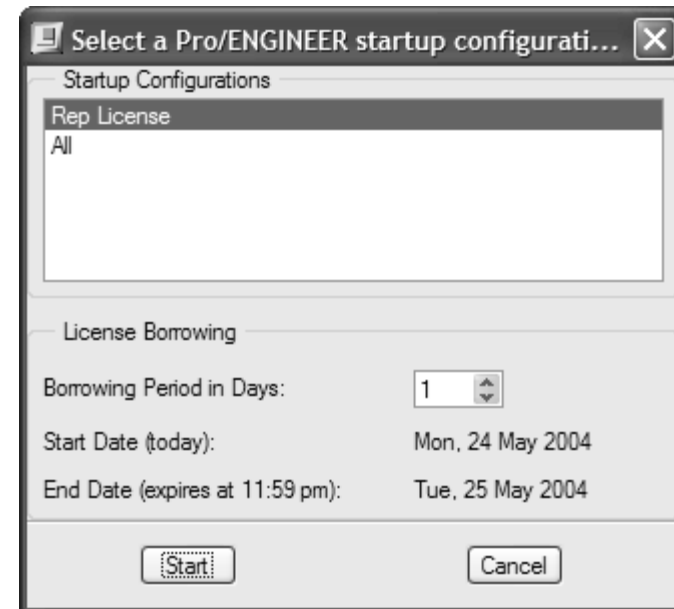
- ◉ **Production Pro/ENGINEER Wildfire 2.0 will utilize FLEXlm 8.4.**
  - This version of FLEXlm provides License Borrowing
- ◉ **Attain the desired license from a specified license pool for a determined time, no longer than 5 days at a time**
- ◉ **Work disconnected from the License Server (LS), referencing the borrowed license**
- ◉ **Successfully return a borrowed license, once the borrowing time has expired**
- ◉ **Borrow licenses on all Operating Platforms; Windows, Unix, Linux**



## Utilizing License Borrowing

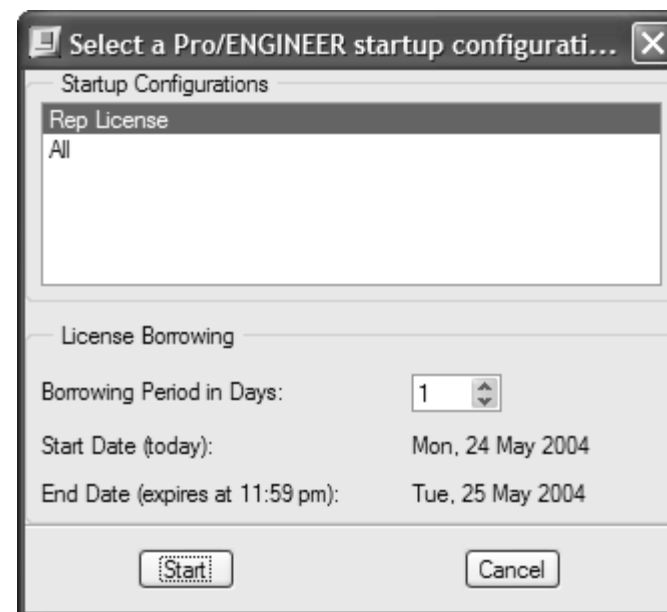
**License Borrowing can only be utilized with Pro/ENGINEER Wildfire 2.0.**

- ◉ **Companies will need to upgrade their license file to v25 and implement the borrowed file**
- ◉ **In order to upgrade to v25, companies will need to perform License Simplification.**
- ◉ **Once performed, user will receive two emails containing the license pack**
  - Standard license file
  - Borrowed license



## Utilizing License Borrowing

1. On my network where I can see the existing license server, I would run `proe_borrow.bat` from my local client's `\loadpoint\bin` directory.
2. In the "Startup Configurations" area of this utility, I would select the startup configuration that I wanted to borrow.
3. In the "Borrowing Period in Days" portion, I would select "1" since I want to borrow it one day. At the bottom of this utility, it will show me the start date, and the end date (expiring at 11:59 pm on the end date).
4. Click on "Start", which will launch the selected Pro/E configuration and you will be in "borrow" mode.
5. Once Pro/E has started, you can check out any floating options that you would like to borrow that are not built in to the selected startup configuration.
6. Exit Pro/ENGINEER. For Windows systems, the license is created in the registry under the current user. On UNIX systems, the license is created in the `$HOME/.flexlmrc` directory. The `LM_BORROW` environment variable is created and stores the information.
7. Disconnect from the network
8. Start Pro/ENGINEER Wildfire 2.0 from the ProENGINEER batch file and choose the borrowed configuration. This will start Pro/E using the borrowed file.



Please reference the Pro/ENGINEER Wildfire 2.0 Installation and Administration Guide, Page A-11 for more information.

## Limitations of License Borrowing

---

**As of Wildfire 2.0, build F000...**

**Downward Compatibility for Pro/ENGINEER is Not Possible if the "BORROW" Keyword Exists Within the Feature Line.**

- ⦿ **Downward compatibility is not possible if the "BORROW" keyword exists within the feature line of a specific Pro/ENGINEER license. That is, the feature with the "BORROW" keyword cannot be used by a release of Pro/ENGINEER prior to Wildfire 2.0. The "BORROW" keyword is required to enable License Borrowing for the specified feature. See TAN 125362 - SPR 1078914**

**Borrowed Licenses for Pro/ENGINEER Wildfire 2.0 Cannot be Returned Early.**

- ⦿ **As of Pro/ENGINEER Wildfire 2.0 build F000, License Borrowing is enabled as long as the feature contains the keyword "BORROW" within the license file. However, once the license has been borrowed, it cannot be returned early. Licenses can be borrowed from 0 to 5 days, with the license being returned to the license server at midnight of the return date. See TAN 125363 - SPR 1065328**