

# HP Z WORKSTATIONS FOR ANSYS



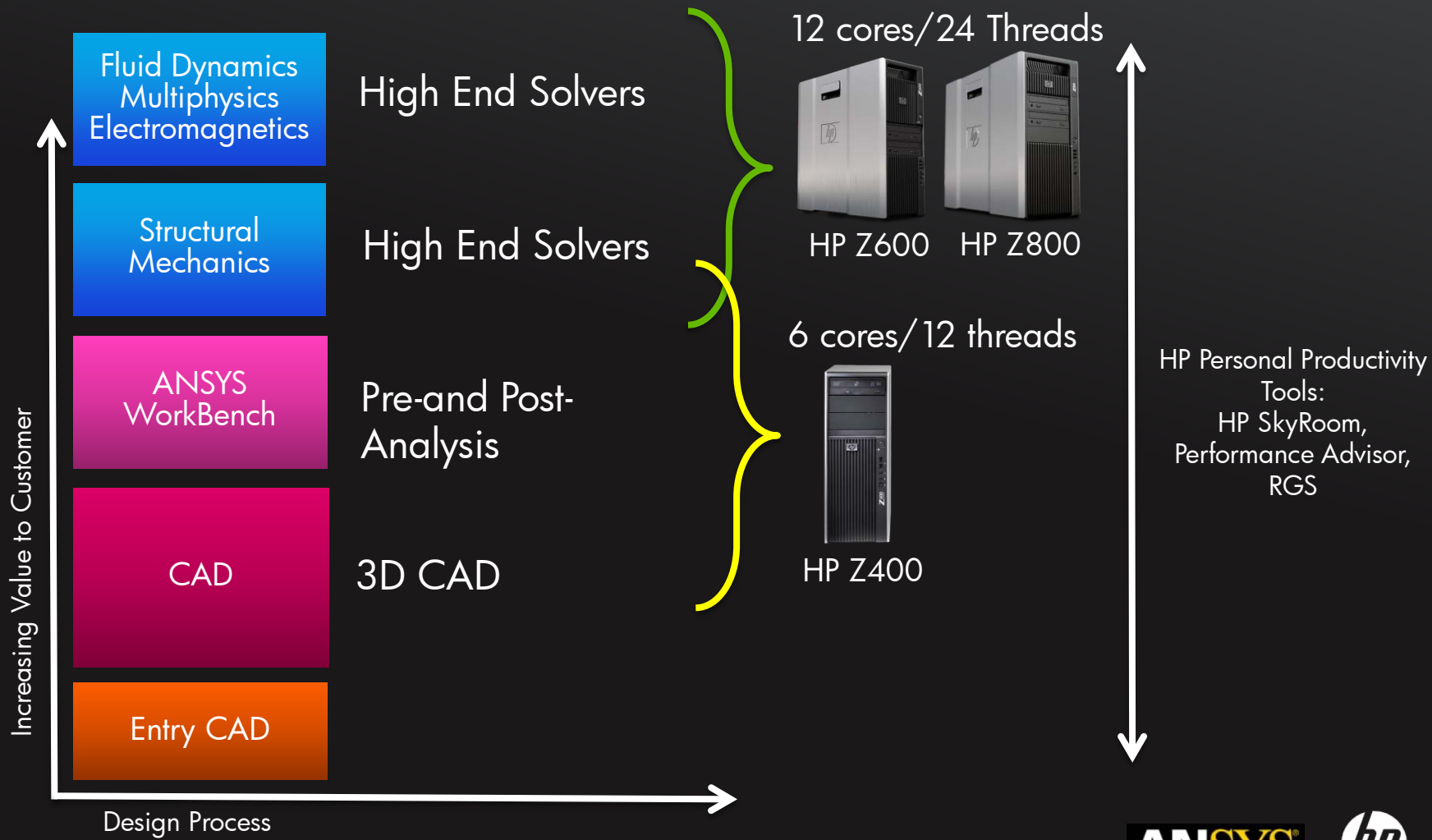
Tom Salomone  
HP CAE/CAD Segment Marketing  
8 June 2010



# HP Z WORKSTATIONS AND HP ELITEBOOK MOBILE WORKSTATION



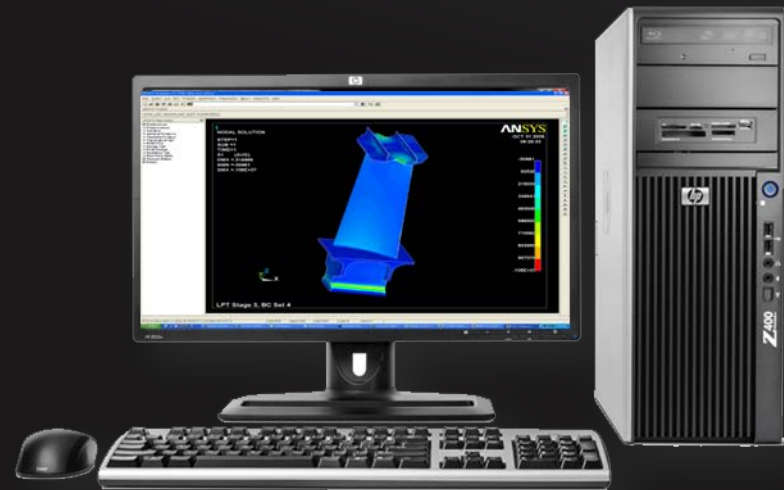
# HP Z WORKSTATIONS FOR ANSYS PRODUCTS



# RECOMMENDED CONFIGURATIONS FOR PRE-AND POST-ANALYSIS

## HP Z400 Workstation

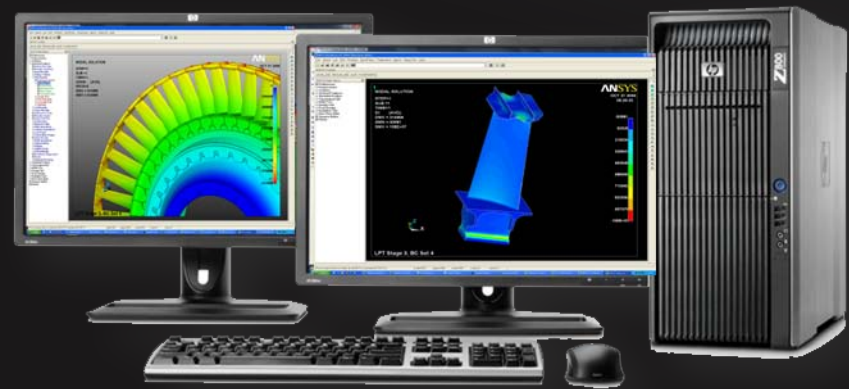
- Intel® Xeon® Six-Core Processor W3680  
(3.33 GHz, 12 MB cache, 1333 MHz memory)
- Genuine Windows® 7 Professional 64-bit Professional x64  
custom installed
- 8 GB (4 x 2 GB) DDR3-1333 ECC
- NVIDIA QuadroFX1800
- 300 GB SATA 10K



# RECOMMENDED CONFIGURATIONS FOR SOLVERS

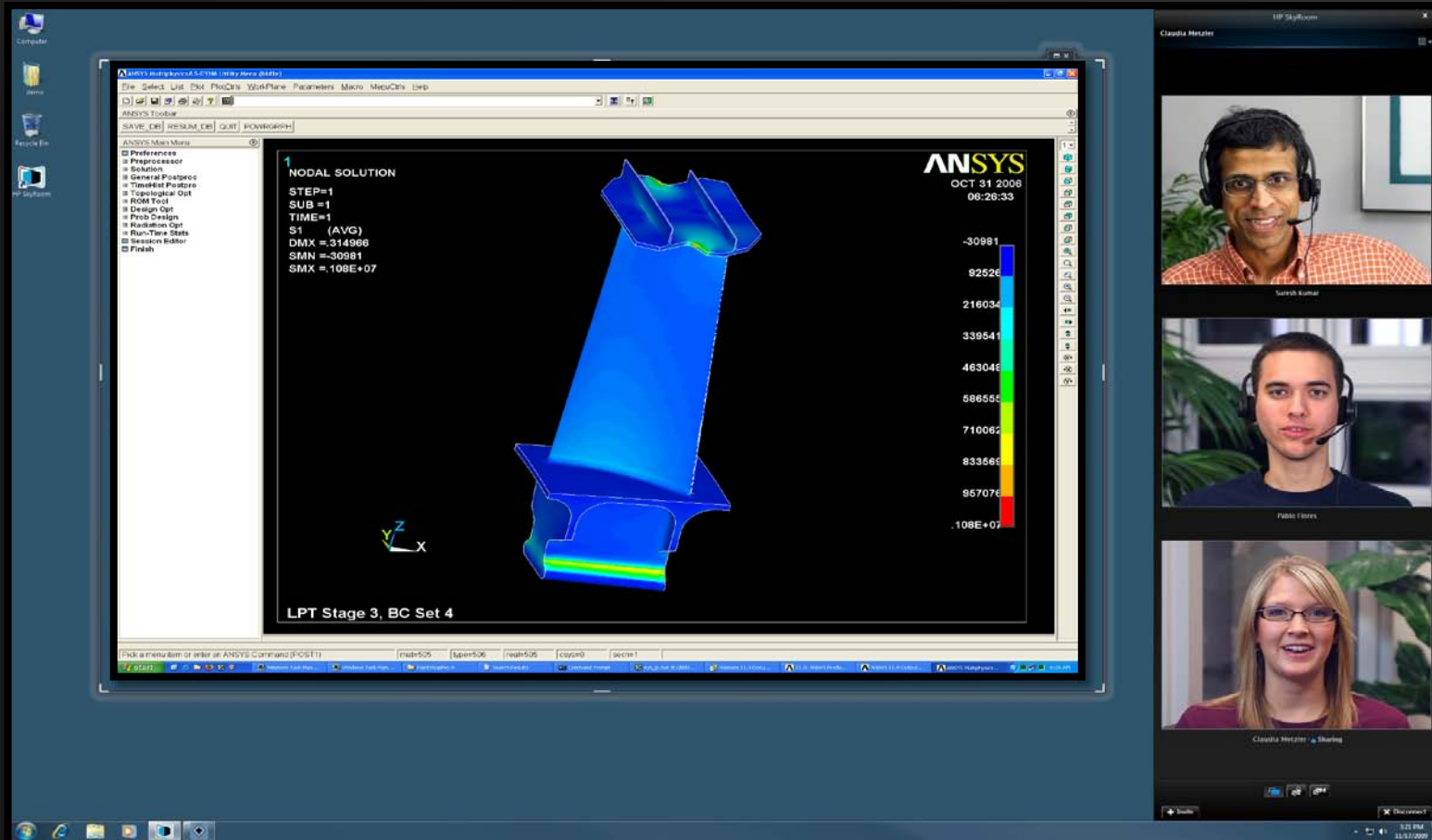
## HP Z800 Workstation

- Dual Intel® Xeon® Six-Core Processor X5680  
(3.33 GHz, 12 MB cache, 1333 MHz memory)
- Genuine Windows® 7 Professional 64-bit Professional x64 custom installed
- 24 GB (12 x 2 GB) DDR3-1333 ECC
- NVIDIA QuadroFX4800
- 2x 450 GB SAS 15K rpm



# HP SKYROOM

Share workspace in real time with HD video conferencing\*



\* HD content required to view images in HD. Internet access required. Performance dependant on network latency and image frame content.

# HP PERFORMANCE ADVISOR



- Optimize settings
- Monitor application impact on processors, memory, graphics, network
- And more...
- Included on HP workstations

# HP REMOTE GRAPHICS SOFTWARE

- Access your workstation remotely
- Operate in real time/ as if you are there
- Over large distances





