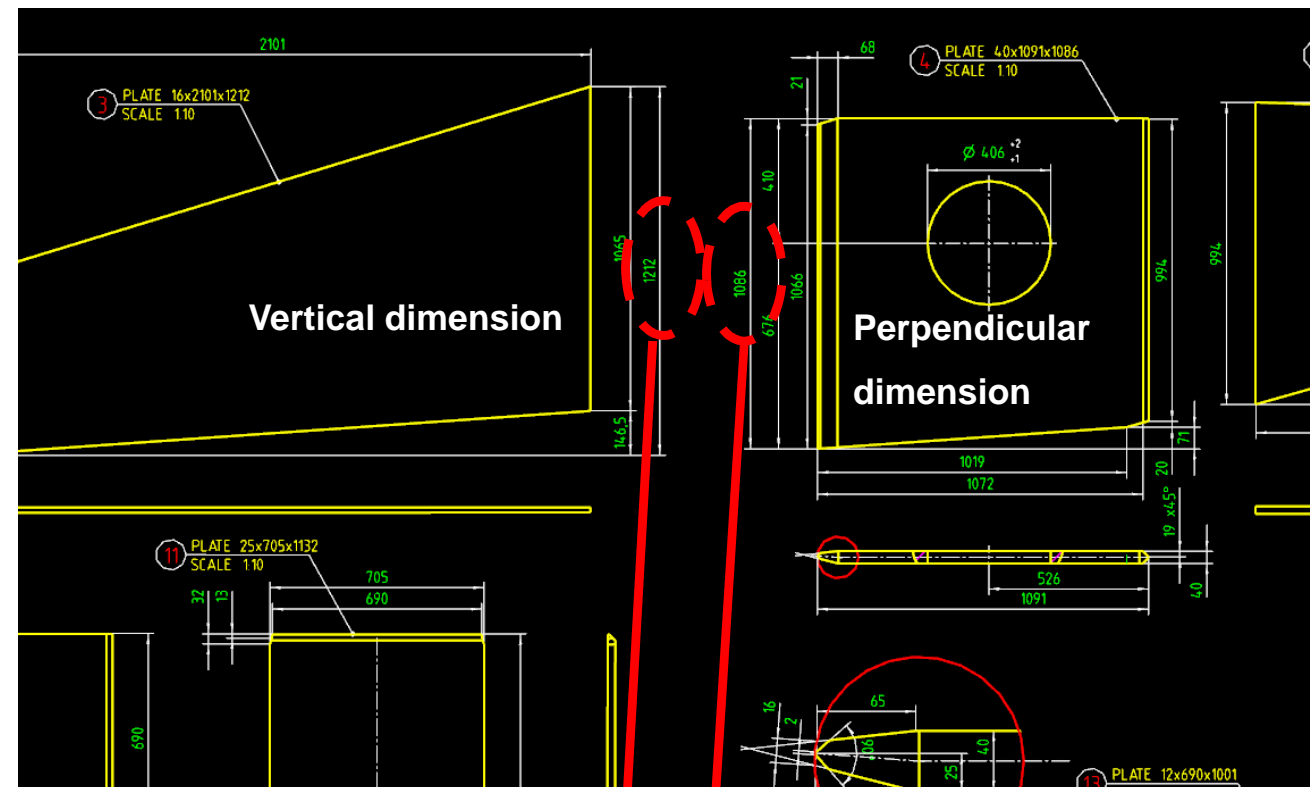


Drawing defaults in NX drafts:

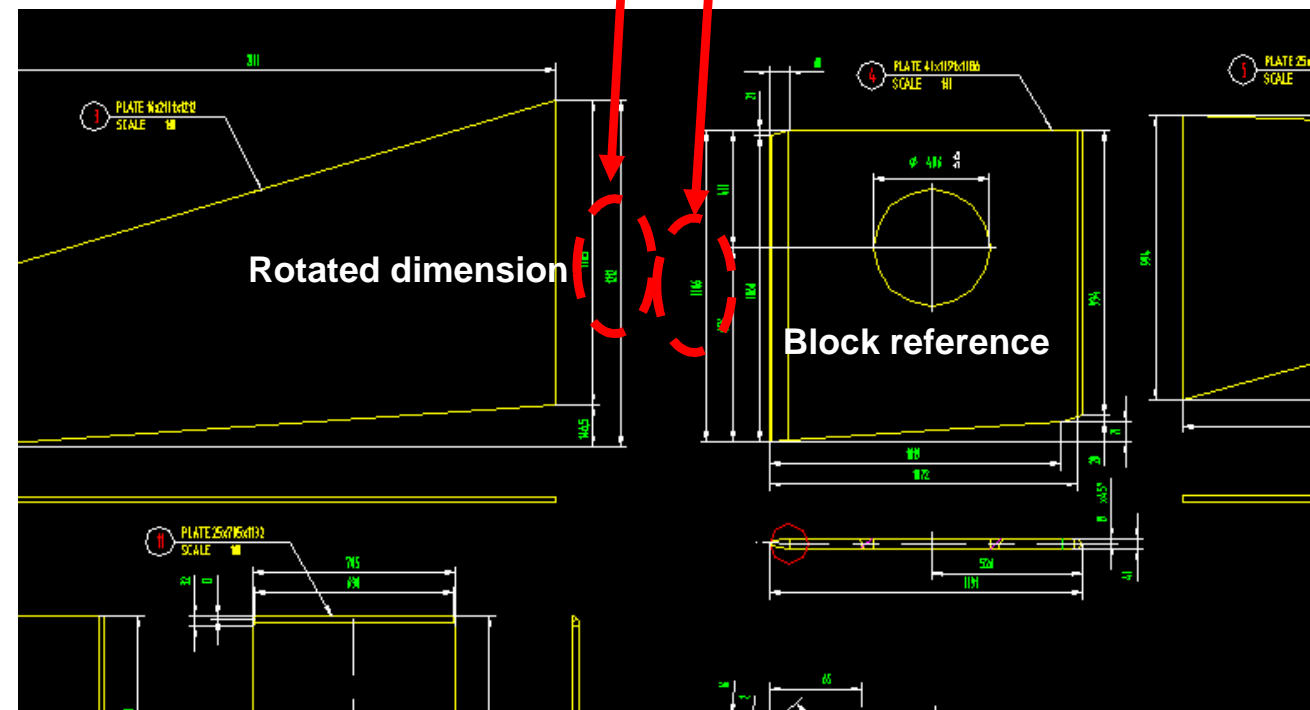
Vertical dimensions always are correctly converted into rotated dimensions in Acad.

Perpendicular dimensions always convert into blocks in Acad.

For the upcoming drawing and modelling standard (common now in NX) **avoid** the use of perpendicular dimensions!



NX draft



Acad dwg



Sandvik Mining and Construction
Materials Handling GmbH & Co KG

**Teamcenter / NX
DWG-Export from NX**

Standardisation - Modularisation

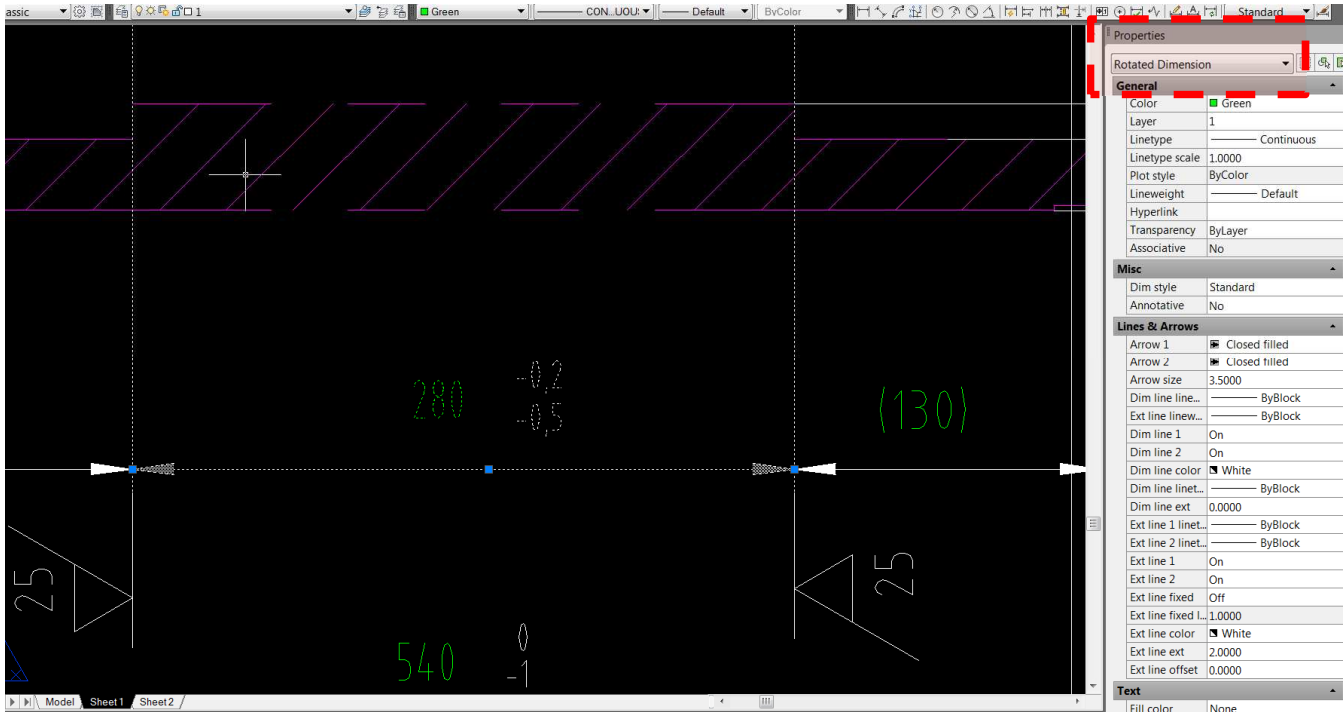
Author: J. Schütz

Date: 19.04.2013
Status: FINAL

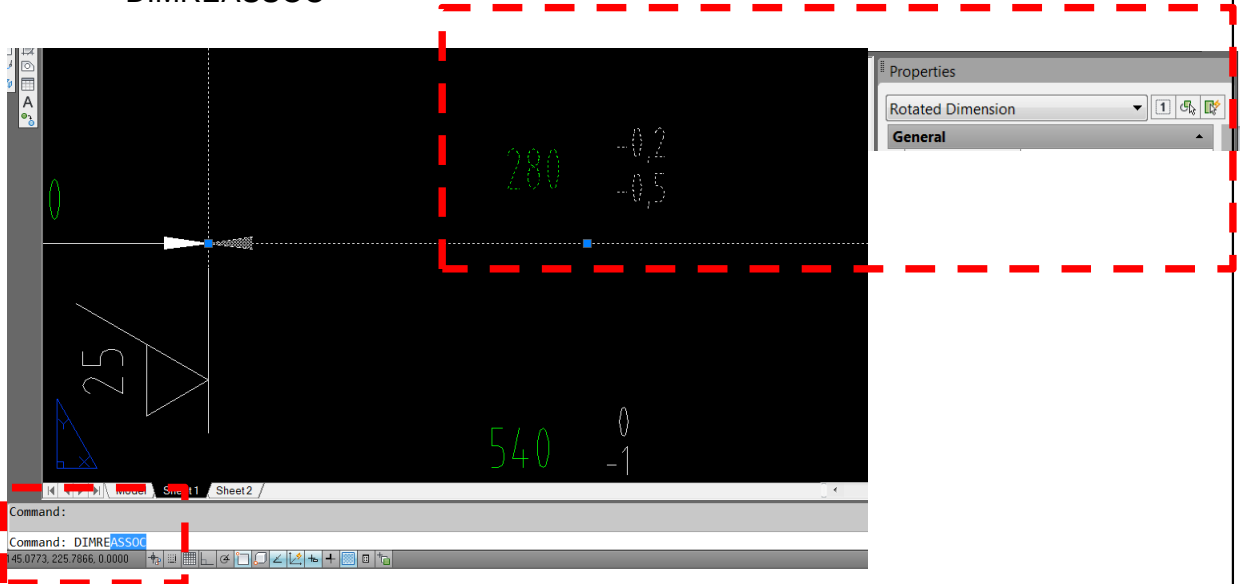
Rev.

0

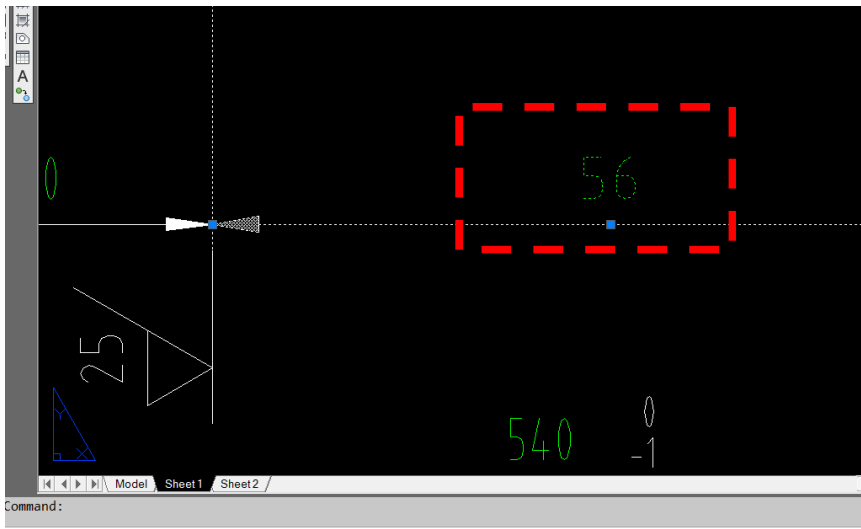
1.) after converting, the dimension is still a dimension, but not associative



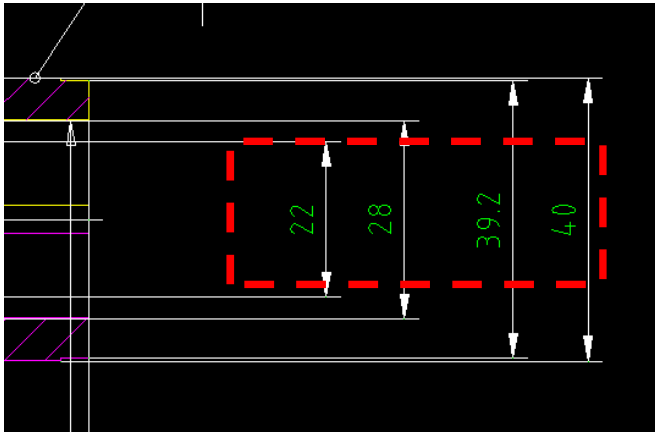
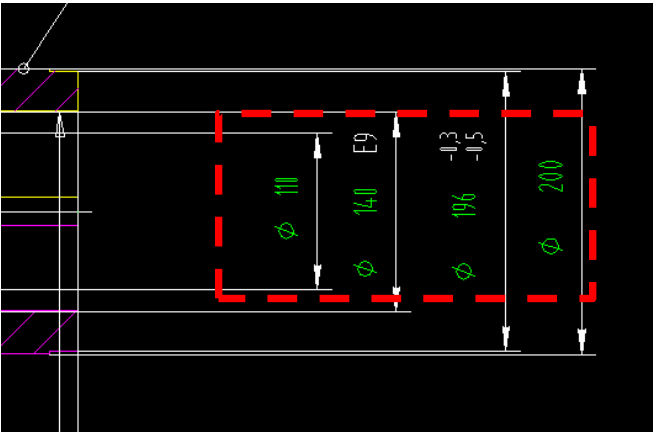
2.) activate all rotated dimensions and perform DIMREASSOC



3.) dimension is associative again, but tolerances are lost and scale has changed to 1:1



4.) Diameter informations and tolerances also get lost after making them reassociative



	Teamcenter / NX DWG-Export from NX, default settings			
	Standardisation - Modularisation			
Sandvik Mining and Construction Materials Handling GmbH & Co KG	Author:J.Schütz	Date: 12.04.2013 Status: FINAL	Rev.	0