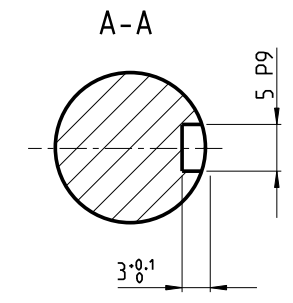
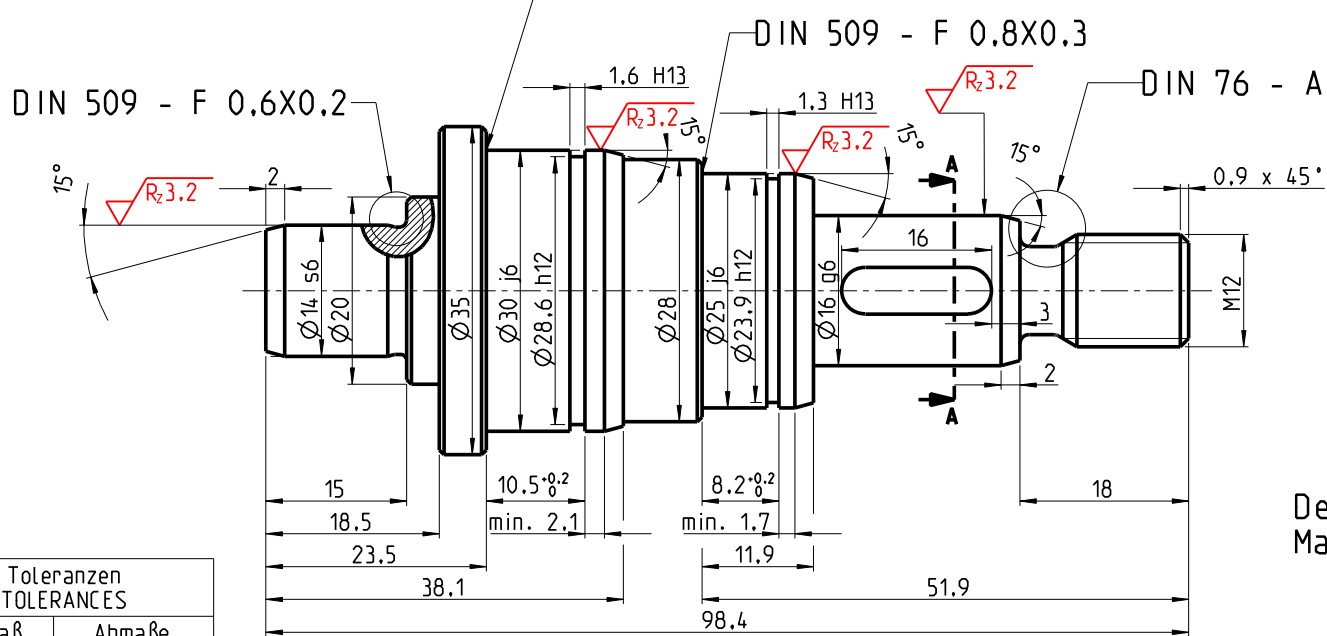
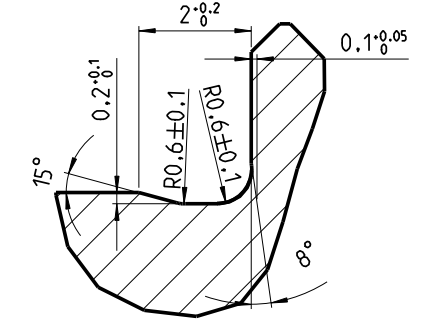


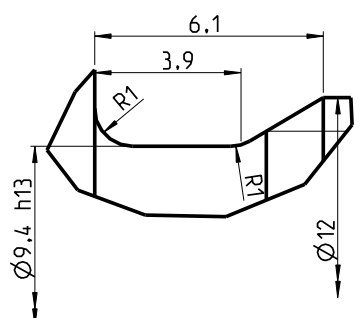
For Educational Use Only



Detail DIN 509 - F 0.6X0.2
Maßstab 12:1



Detail DIN 76 - A
Maßstab 8:1



$\sqrt{R_{25}}$ ($\sqrt{R_{3.2}}$)

Alle nicht bemaßten Fasen 0.5 x 45°

For Educational Use Only

For Educational Use Only

Toleranzen TOLERANCES	
Paßmaß BASIC SIZE	Abmaße DEVIATIONS
1.3H13	+0.140 0.000
1.6H13	+0.140 0.000
5P9	-0.012 -0.042
9.4h13	0.000 -0.220
14s6	+0.039 +0.028
16g6	-0.006 -0.017
23.9h12	0.000 -0.210
25j6	+0.009 -0.004
28.6h12	0.000 -0.210
30j6	+0.009 -0.004

For Educational Use Only

Name: davincino Matr.-Nr.: 123456 Login: 123456	Allg.-Toleranzen ISO 2768 -mK	Oberflächen ISO 1302	Maßstab 2:1 Werkstoff, Halbzeug X20Cr13	Masse (Gew.) 0,277 kg
	Datum 14.07.08	Name LAZ	Benennung Abtriebswelle	
	Gepr.	Norm		
	Projektionsmethode	Blattformat A3	Dateiname ABTRIEBSWELLE	Blatt 1 1 Bl.
Änderung	Datum	Name	Urspr.	Ers. f.:
				Ers. d.: