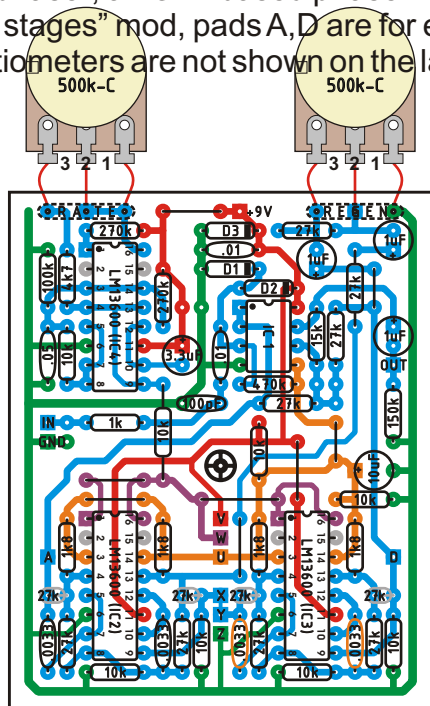
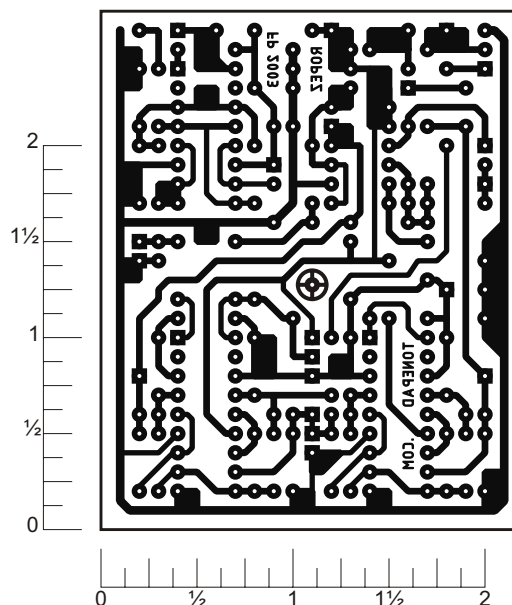


Ross phaser, an OTA based phaser very similar to the EH Small Stone. Pads U,V,W,X,Y,Z are for the "more stages" mod, pads A,D are for experimenting and testing. Off board components except for the potentiometers are not shown on the layout. Trademarks remain property of their owners.

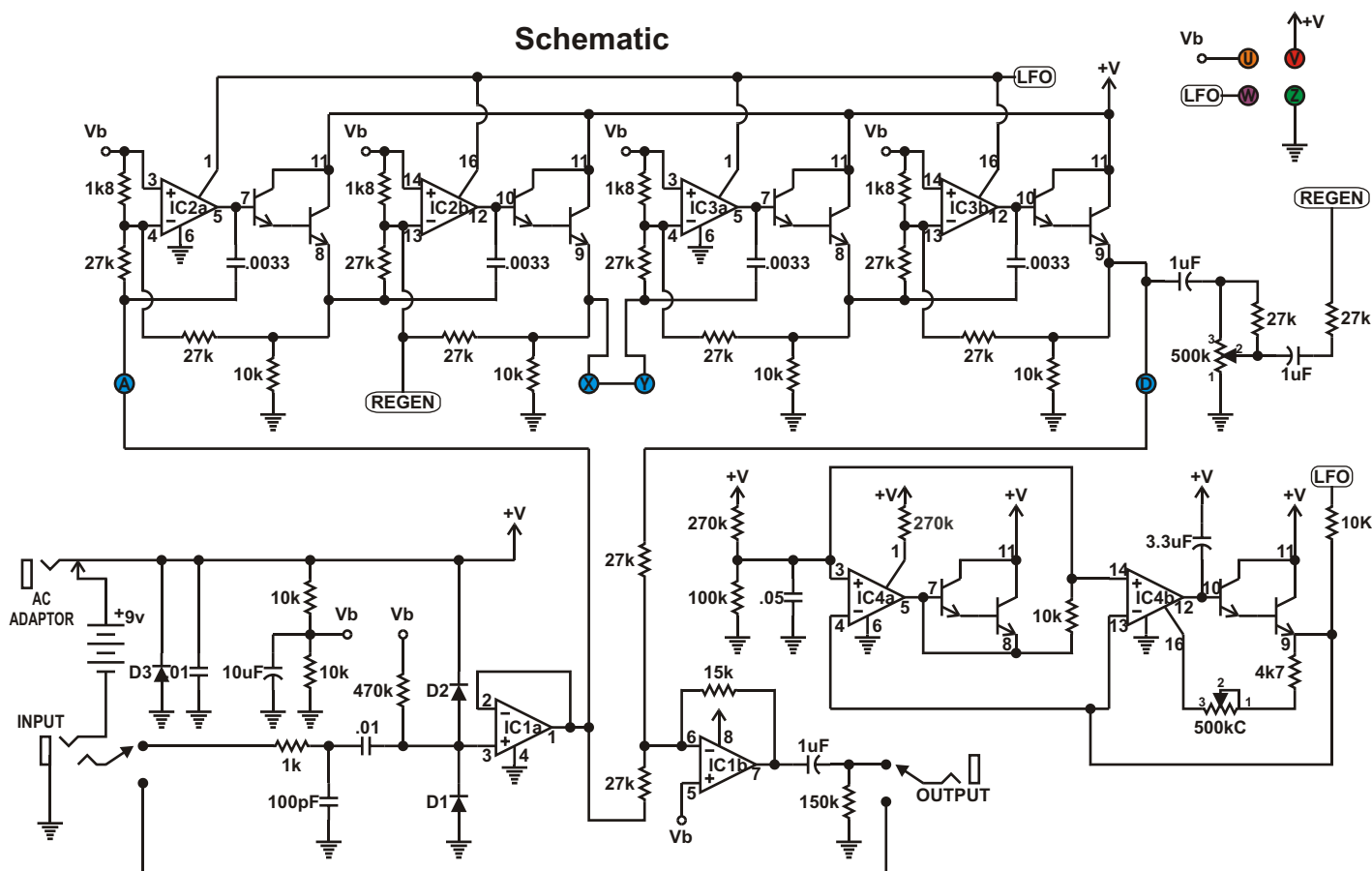


LAYOUT

READY TO TRANSFER



Schematic



Ross Phaser stock parts list and mods schematic. The phase filter mods is suggested by Mark Hammer. No pads are provided in the layout for these mods, trace cutting, extra parts and or soldering to flying component leads will be required to perform these mods. Trademarks remain property of their owners.

Parts List

Resistors

1 - 1k
8 - 10k
1 - 470k
12 - 27k
1 - 15k
2 - 270k
1 - 100k
4 - 1.8k
1 - 4.7k
1 - 150k

Capacitors

1 - 100pF
2 - 0.01uF
1 - 0.05uF
4 - 0.0033uF
3 - 1uF
1 - 3.3uF
1 - 10uF

Diodes

3 - 1N914

Pots

1 - 500kC
1 - 500kC

ICs

3 - LM13600
1 - RC4558, (other dual opamps will work)

NOTES:

"The cap mod can also be applied to all the caps, making the unit a 4-pole lowpass filter that automatically wahs up and down."
M.Hammer.

Cap values in RED are for the Univibe mod.

Layout and presentation by Francisco Peña 2001 - 2005®.
All rights reserved. Authorization for personal use only.
any commercial use is forbidden.
Permission for posting/serving limited to
<http://www.tonepad.com>
Permission refused for posting from other sites.

Schematic with mods

