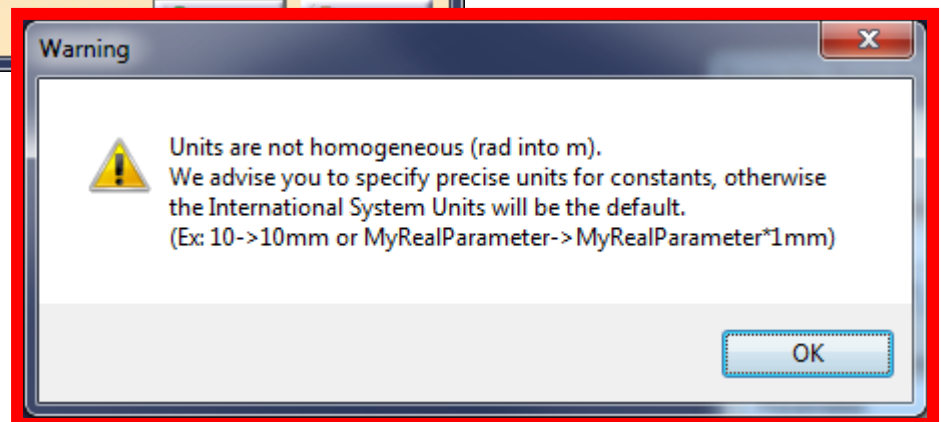
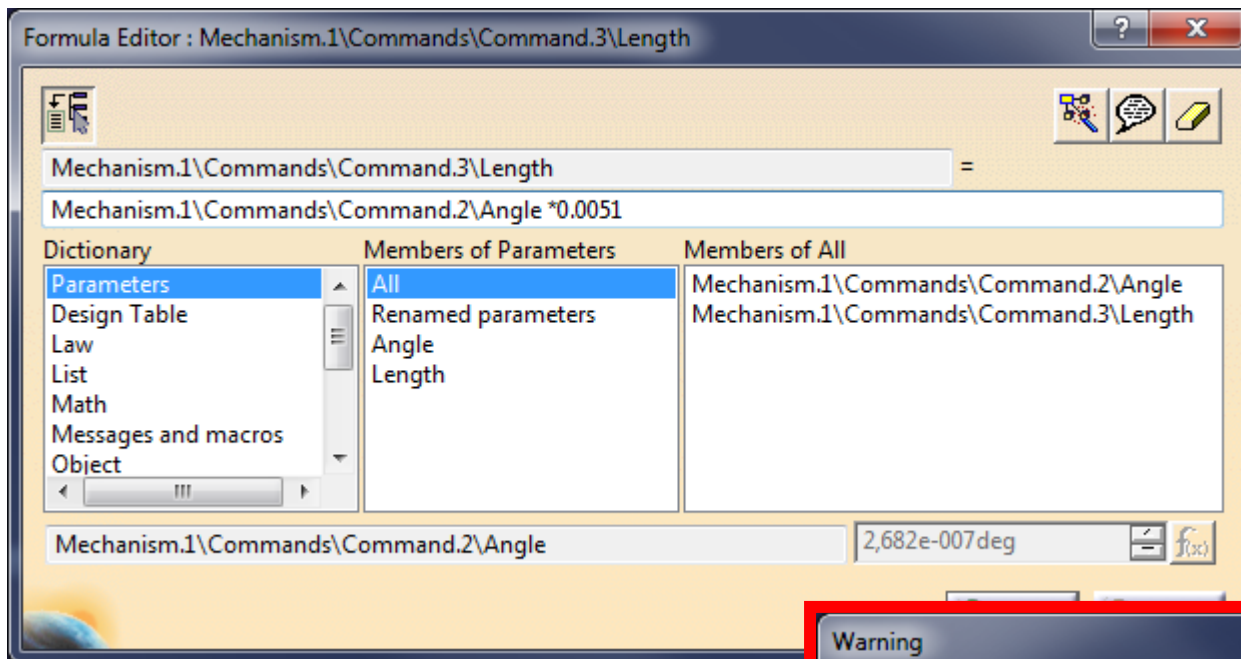
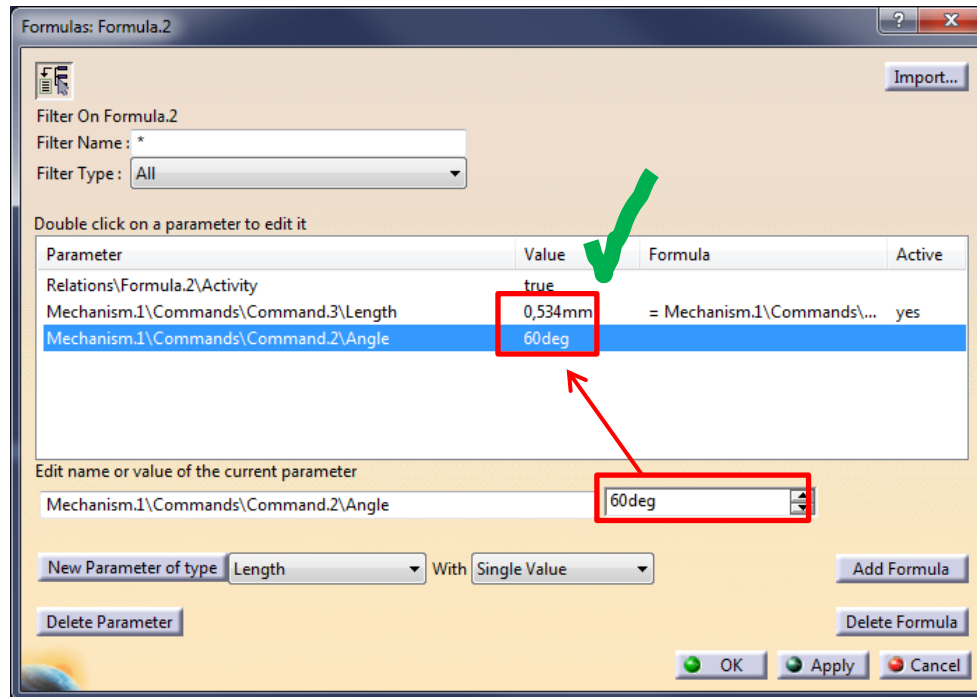


Problem:
Kinematic with LAW

- Every time I want to compile a LAW in my mechanism, like beneath, I get this warning, which is of course valid.
- $LENH = ANLGE[rad] * X[m]$ (X = radius of a circle)

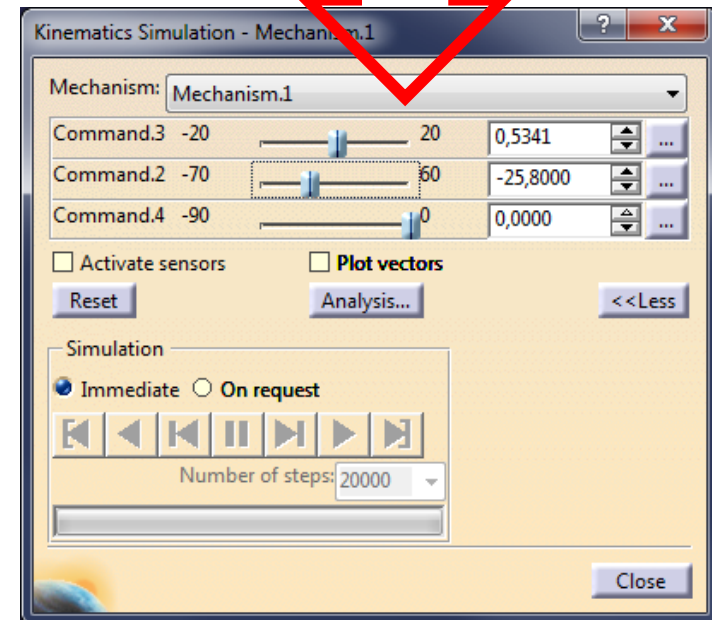
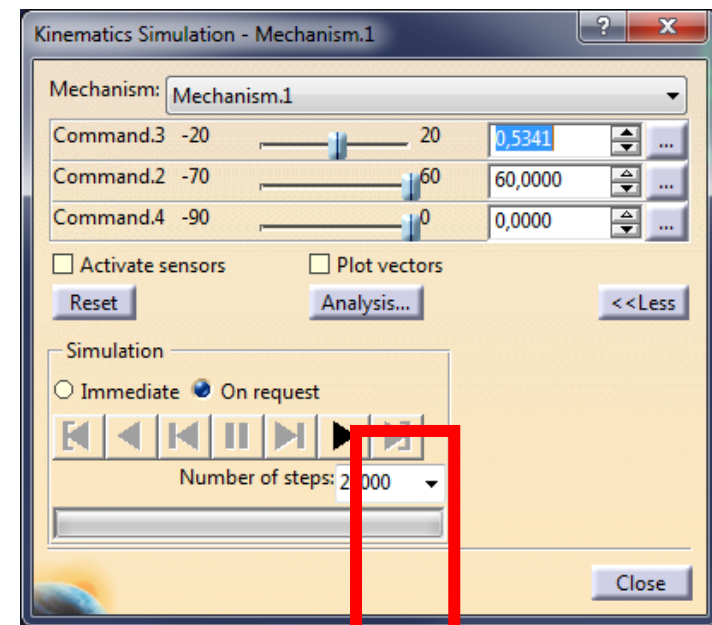


- When I try now to change the value of the angle in the formula-window, everything is fine and the length is changing



- BUT!!! In my wireframe geometry nothing is changed!!! Only if i double-click the Mechanism itself for simulation the movement of the 60deg and 0,534mm is accomplished.

- When I want to change the angle in here, The is no effect to the lengh!!!
- THIS IS THE PROBLEM.
- I tried it with a TIME variable but then all other Commands are not available in the Simulation anymore!!!



***DOES ANYBODY HAVE A
SOLUTION FOR THAT ISSUE???***

THANKS IN ADVANCE