

Von: SRAC2-return-51-38139628@lb.bcentral.com im Auftrag von COSMOS Customer eLink
[COSMOS@lb.bcentral.com]

Gesendet: Donnerstag, 20. Februar 2003 23:28

An: List Member

Betreff: February COSMOSWorks Elink



<http://www.cosmosm.com>

February 2003

PRODUCTS

DOWNLOADS

CASE STUDIES

SUPPORT

TRAINING

EVENTS

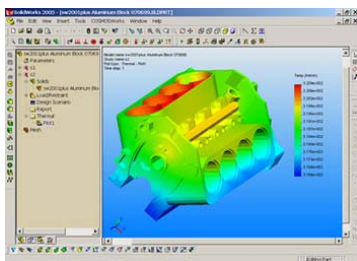
SEMINARS

NEWS

In this Issue

- [COSMOS 2003 International Versions](#)
- [COSMOS Newsgroup Lists](#)
- [Upcoming Events - Pacific Design Show & NDES](#)
- [COSMOS Consulting](#)
- [Tips & Tricks - New licensing feature for COSMOS 2003 products](#)

The COSMOSWorks eLink is never sent unsolicited. To unsubscribe, please follow the instructions at the bottom of this e-mail.



COSMOS 2003 International Versions Now Available

COSMOSWorks 2003, COSMOSMotion 2003 and COSMOSFloWorks 2003 international versions are now available on the web for download for customers that have subscription support.

COSMOSWorks 2003 Sp 1.0:

http://www.cosmosm.com/downloads/works_menu.htm

Available languages: English, Chinese, French, German, and Japanese

COSMOSMotion 2003 Sp 0.1:

http://www.cosmosm.com/downloads/motion_menu.htm

Available languages: English, Chinese, French, German, Italian & Japanese

COSMOSFloWorks 2003 Sp 1.0:

http://www.cosmosm.com/downloads/floworks_menu.htm

Available languages: English, Japanese

Service packs to upgrade from Sp0.0 to this version are also available at the same locations.

COSMOS Newsgroup Lists

Did you know that there are several COSMOS Newsgroup lists where you can discuss COSMOS topics with users from around the world?



www.topica.com/lists/cosmosfea (a general mailing list for COSMOS products and FEA discussions)



www.topica.com/lists/cosmosedu (a mailing list for educational users of COSMOS/products and FEA discussions)

Subscribe!

Select the newsletters you'd like to receive, then enter your email address below. It's free!

COSMOS FEA List

COSMOS Edu List

hosted by **topica**

German Language Newsgroup List



<http://ww3.cad.de/cgi-bin/ubb/forumdisplay.cgi?action=topics&forum=CosmosWorks&number=131> (German newsgroup list for COSMOSWorks)

Subject	Author	Date
RE: Correct Boundary Conditions for Shell...	Ramesh Ramalingam	08/22/00
COSMOSWorks 3.0.0 (no release)	Ramesh Ramalingam	08/22/00
ENH: Correct Boundary Conditions for S...	ace@mh.com	08/22/00
RE: Correct Boundary Conditions for Shell...	P. Keltner	08/22/00
RE: Correct Boundary Conditions for Shell...	P. Keltner	08/22/00
RE: Correct Boundary Conditions for Shell...	Ramesh Ramalingam	08/22/00
RE: Correct Boundary Conditions for Shell...	ChristopherVingst	08/22/00
RE: Correct Boundary Conditions for Shell...	P. Keltner	08/22/00
RE: Correct Boundary Conditions for Shell...	swm@pyprog.com	08/22/00
RE: Correct Boundary Conditions for Shell...	ChristopherVingst	08/22/00
RE: Correct Boundary Conditions for Shell...	swm@pyprog.com	08/22/00

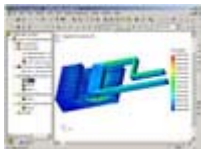
Upcoming Events



- Pacific Design & Manufacturing Show**
<http://www.devicelink.com/expo/pac02/index.html>
 February 19-21
 Anaheim Convention Center
 Anaheim, CA
- NDES 2003**
<http://www.manufacturingweek.com>
 March 3-6
 McCormick Place
 Chicago, Illinois
- CeBIT**
<http://www.cebit.de>
 March 12-19
 Hannover Convention Center
 Hannover, Germany

For more information on COSMOS events, please go to <http://www.cosmosm.com/events.htm>

COSMOS Consulting



The inherent powerful capabilities of COSMOSM products combined with the exceptional consulting staff at SRAC make the experience of outsourcing a complicated FEA not only a value added exercise, but educational. - Sean Collins, Engineer

Put the power of COSMOS Consulting to work for your project. For more information on the variety of consulting services available, please visit <http://www.cosmosm.com/services/consulting.htm>

New licensing feature for COSMOS 2003 products

Question:

What is the new feature in licensing for COSMOS 2003 products?

Answer:

COSMOSWorks 2003, COSMOSFloWorks 2003 and COSMOSMotion 2003 can now detect up to 3 COSMOS hardware lock keys on your computer. This works only if you have SuperPro or USB keys. This feature does not work for C-Plus dongle.



You will need to make sure that the COSMOS License Administrator tool points to these license files. Follow the steps given below to configure the COSMOS License Administrator tool.

- Open Windows Explorer. Go to the "COSMOS Installation directory/License" directory. Create two directories for each license file and copy the appropriate file into each directory.
- Go to Start->Programs->Cosmos Applications->License

- Administrator Tool.
3. Go to the "Authorized Modules" tab.
 4. Click on the edit button. Make sure you clear all the previous paths listed. Click on the browse button and browse to select one of the license files. Click on the browse button again to select the other license file. Then click OK and click yes for new settings to take effect.
 5. Click on the Refresh button so that all the modules from both these licenses files are read and listed.

For more information on licensing, please visit the COSMOS Online [Knowledge Base](#).

The COSMOSWorks eLink is produced by: The COSMOS Team at SolidWorks
12121 Wilshire Blvd., Suite 700
Los Angeles, CA 90025
(310) 207-2800
(310) 207-7805 FAX
www.cosmosm.com

Please send any questions or comments to: njones@solidworks.com

Powered by List Builder
[Click here to change or remove your subscription](#)