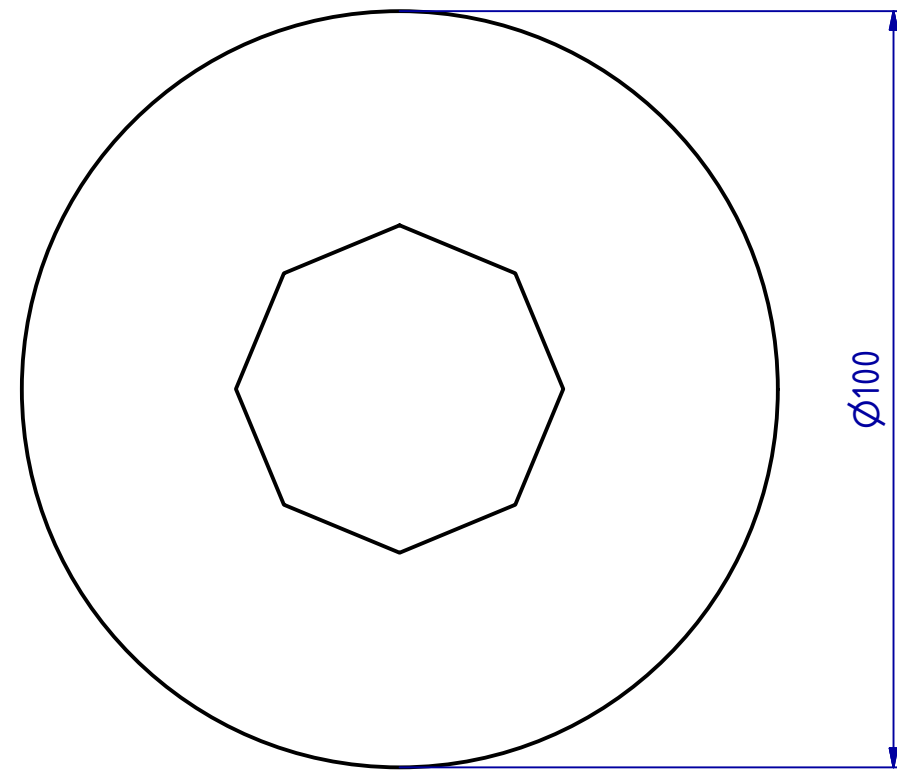
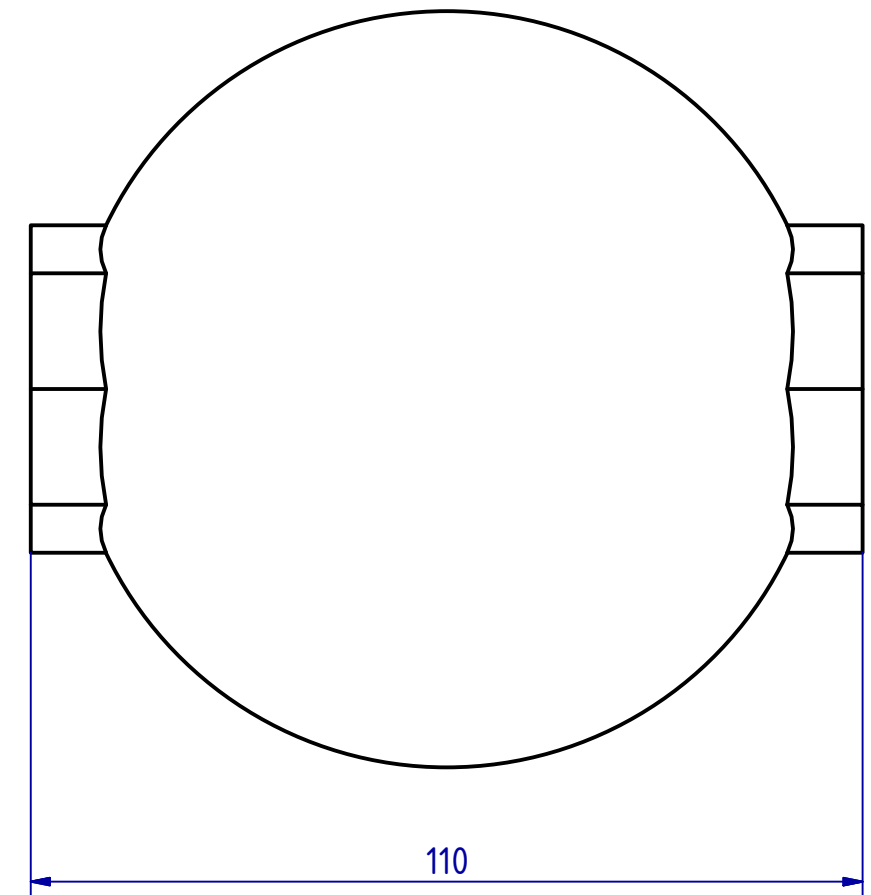


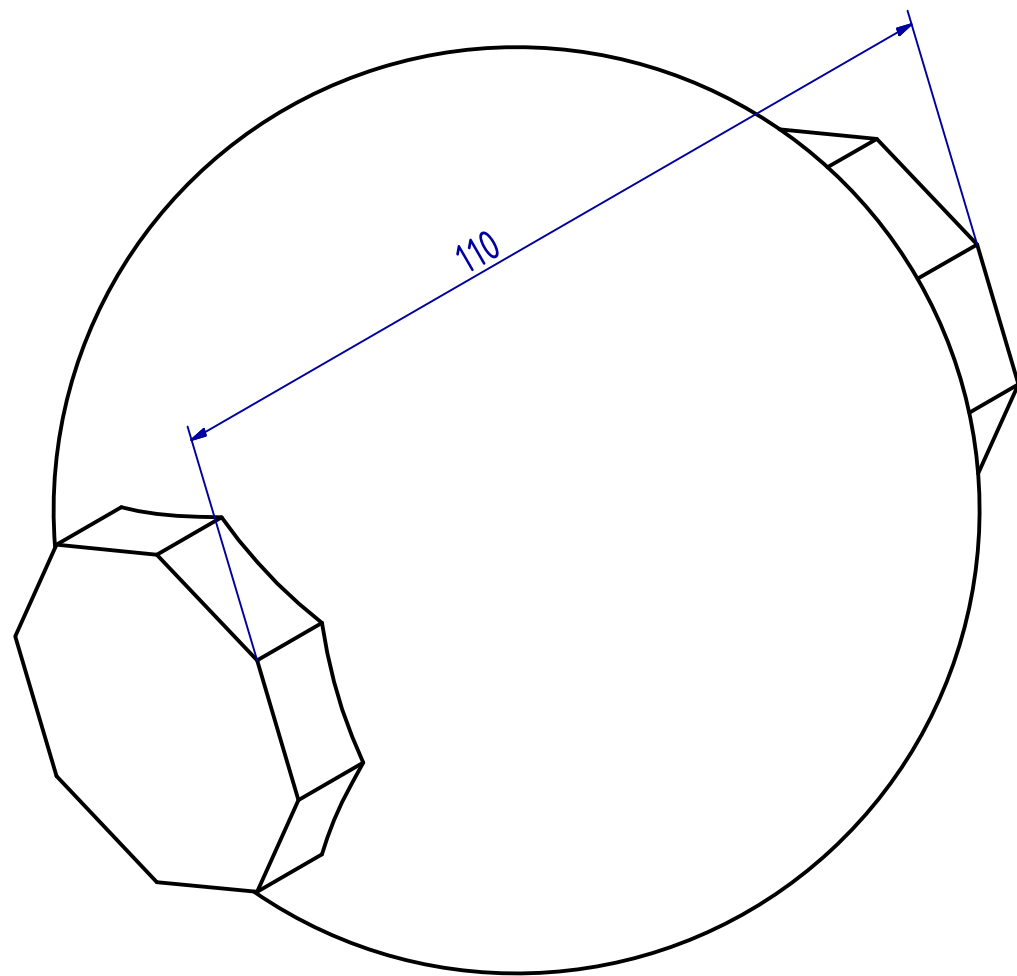
Frontansicht M1:1




Seitenansicht M1:1



Isometrie  
M1,2247448713915890490986420373529:1



<b>mensch</b>  <b>maschine</b> Scholle		Mensch und Maschine Scholle GmbH Haberstraße 42 42551 Velbert Telefon 02051-98900-20 Internet www.scholle.de		Maßstab 1:1	Masse 0,5 kg
		Datum    Name Gez. 25.11.2014    MP Gepr. _____ Norm _____		Generisch	
				<b>CAD-M Kugel</b>	
				141125-0911-BT-0002	
Status	Änderungen	Datum	Name	D:\DATA_IVIV2015\CAD.de\Isometrie\141125-0911-BT-0002.idw	
				A3	V4