



SolidWorks® Toolbox

---

Toolbox in a Multi-User Environment

© 1995-2001, SolidWorks Corporation  
300 Baker Avenue  
Concord, Massachusetts 01742 USA  
All Rights Reserved.

U.S. Patent 5,815,154 U.S. Patent 6,219,049 U.S. Patent 6,219,055
-------------------------------------------------------------------------

SolidWorks Corporation is a Dassault Systemes S.A. (Nasdaq:DASTY) company.

The information and the software discussed in this document are subject to change without notice and should not be considered commitments by SolidWorks Corporation.

No material may be reproduced or transmitted in any form or by any means, electronic or mechanical, for any purpose without the express written permission of SolidWorks Corporation.

As a condition to your use of this software product, you agree to accept the limited warranty, disclaimer and other terms and conditions set forth in the SolidWorks Corporation License and Subscription Service Agreement, which accompanies this software. If, after reading the License Agreement, you do not agree with the limited warranty, the disclaimer or any of the other terms and conditions, promptly return the unused software and all accompanying documentation to SolidWorks Corporation and your money will be refunded.

The software discussed in this document is furnished under a license and may be used or copied only in accordance with the terms of this license. All warranties given by SolidWorks Corporation as to the software and documentation are set forth in the SolidWorks Corporation License and Subscription Service Agreement, and nothing stated in, or implied by, this document or its contents shall be considered or deemed a modification or amendment of such warranties.

SolidWorks® and the SolidWorks logo are the registered trademarks of SolidWorks Corporation.

SolidWorks 2001 is a product name of SolidWorks Corporation.

FeatureManager® is a jointly owned registered trademark of SolidWorks Corporation.

Feature Palette™ and PhotoWorks™ are trademarks of SolidWorks Corporation.

ACIS® is a registered trademark of Spatial Technology Inc.

IGES® Access Library is a registered trademark of IGES Data Analysis, Inc.

FeatureWorks™ is a trademark of Geometric Software Solutions Co. Limited.

GLOBEtrötter® and FLEXlm® are registered trademarks of Globetrotter Software, Inc.

Other brand or product names are trademarks or registered trademarks of their respective holders.

COMMERCIAL COMPUTER SOFTWARE – PROPRIETARY

**U.S. Government Restricted Rights.** Use, duplication or disclosure by the Government is subject to restrictions as set forth in FAR 52.227-19 (Commercial Computer Software - Restricted Rights), DFARS 252.227-7013(c)(1)(ii)(Rights in Technical Data and Computer Software) and in the license agreement, as applicable.  
Contractor/Manufacturer:  
SolidWorks Corporation, 300 Baker Avenue,  
Concord, Massachusetts 01742 USA

Portions of this software are copyrighted by and are the property of Unigraphics Solutions Inc.

Portions of this software © 1990-2001  
D-Cubed Limited.

Portions of this software © 1990-2001  
LightWork Design Limited.

Portions of this software © 1998-2001  
Geometric Software Solutions Co. Limited.

Portions of this software © 1999-2001  
Immersive Design, Inc.

Portions of this software © 1999-2001  
Viewpoint Corporation

Portions of this software © 1996  
Microsoft Corporation. All Rights Reserved.

The IGES Access Library portion of this product is based on IDA IGES Access Library © 1989-1998 IGES Data Analysis, Inc.

All Rights Reserved.

---

## **Table of Contents**

Introduction	3
Installing SolidWorks Toolbox in a 'Shared' Environment	5
Loading Toolbox - Shared (Common File) Location	5
Loading Toolbox – Additional Users	13
Adding Shared Custom Parts – 'Add-my-parts wizard'	14
Allowing Parts to be inserted by multiple users	15

## Introduction

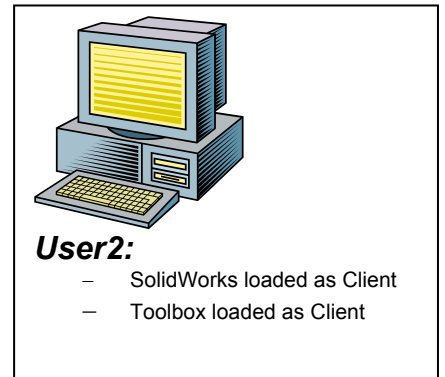
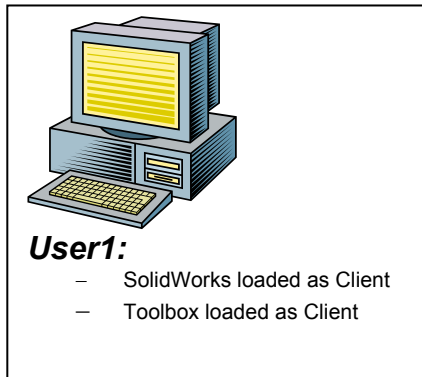
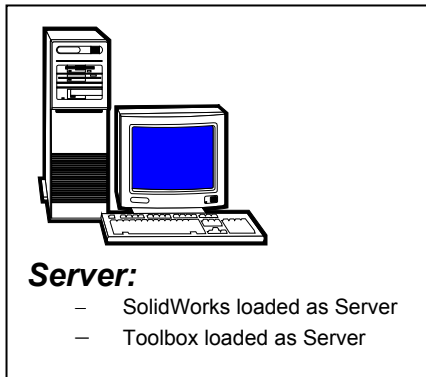
**Special Note:** This document was created as a resource for users desiring to run SolidWorks 2001 Plus Toolbox in a multi-user 'Shared' environment. The information and the software discussed in this document are subject to change without notice.

There are three installation methods available to SolidWorks Toolbox users:

### 1. Client-Server

In this environment SolidWorks and Toolbox will be loaded as true client/server.

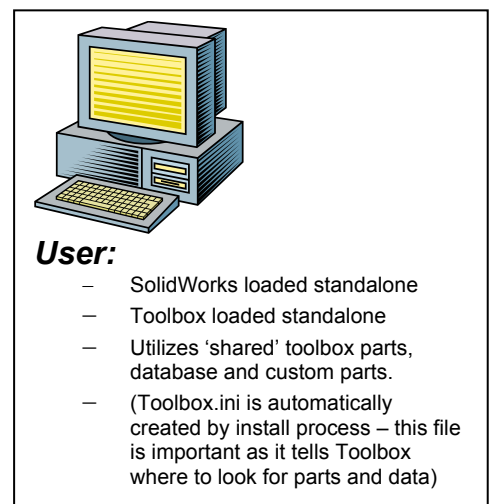
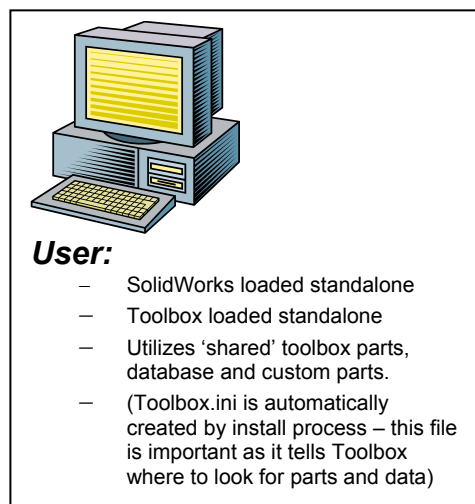
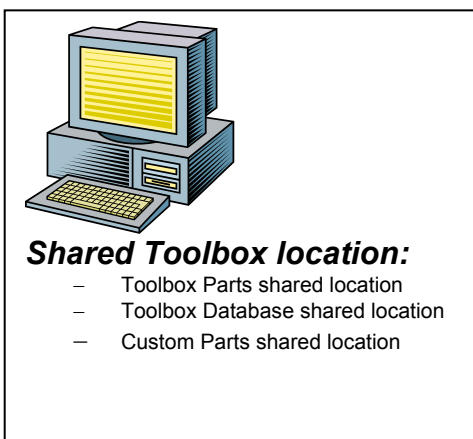
To illustrate, the seats below would be loaded in the following manner:



### 2. Shared

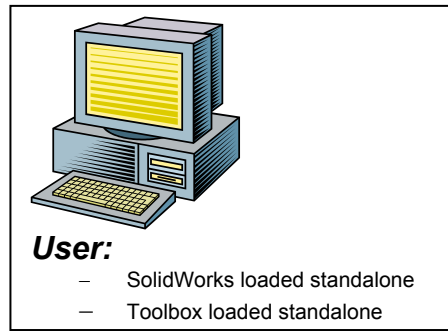
In this environment SolidWorks would be loaded standalone on each seat, Toolbox would be loaded on each seat to run in a 'Shared' environment.

To illustrate, the seats below would be loaded in the following manner:



### ***3. Stand-Alone***

In this instance the user is loaded in true standalone mode and does not share any application or data.



*This document will focus solely on Option 2 – running SolidWorks Toolbox in a ‘Shared’ environment.*

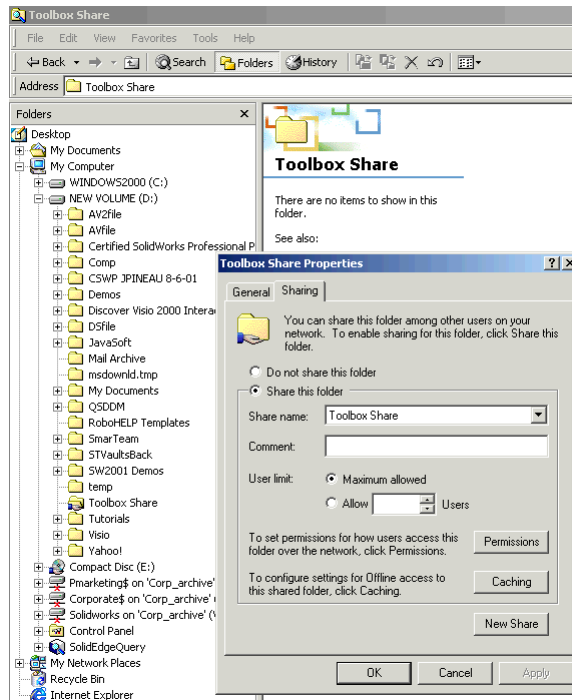
# Installing SolidWorks Toolbox in a 'Shared' Environment

## Loading Toolbox - Shared (Common File) Location

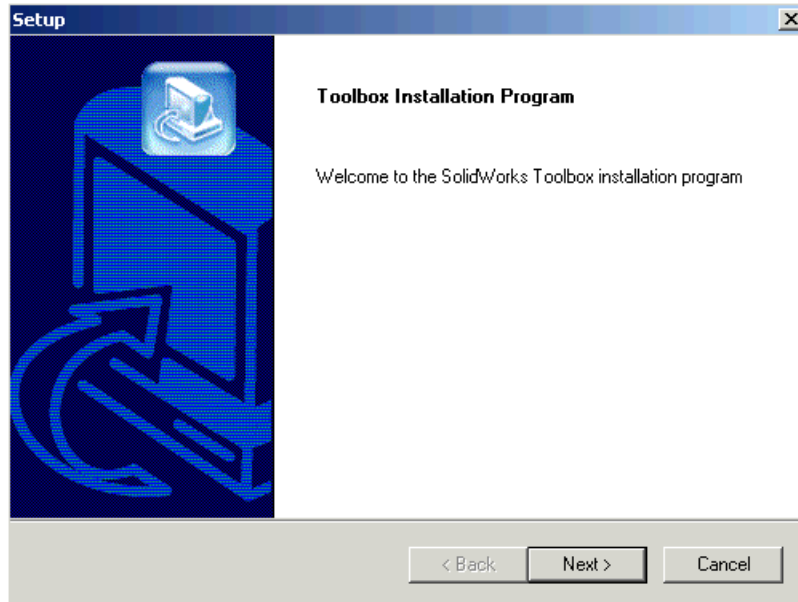
In this example we will establish a Toolbox Share location on a machine named *mkt\_jpineau*. We will then install SolidWorks Toolbox on a SolidWorks user machine (in this case *pm\_jpineau*).

The first installation user installation will establish the location of the database and the Toolbox part files that will be used by all users.

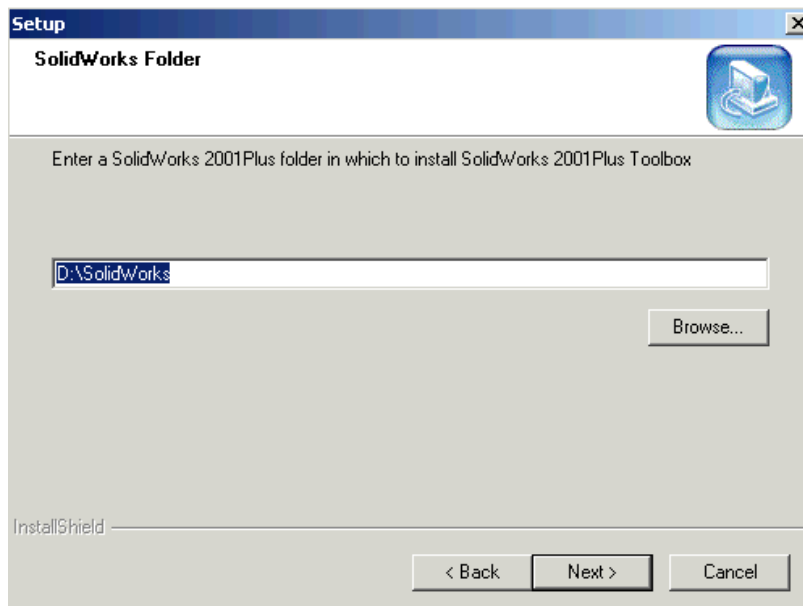
Create a Toolbox shared file location on a selected machine. In this example we will create a directory called *Toolbox Share* on a machine named *mkt\_jpineau* and create a share.



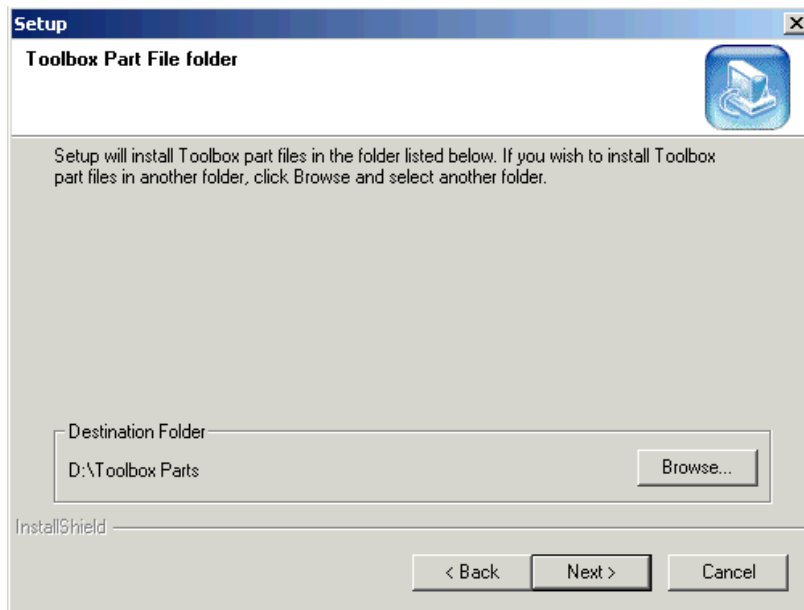
1. On the first user machine, (in this case *pm\_jpineau*) make sure SolidWorks 2001 Plus is loaded, then load the corresponding version of SolidWorks Toolbox (available from the Subscription Support website) as follows:
  - a. Extract zip file, select Setup, begin Toolbox installation



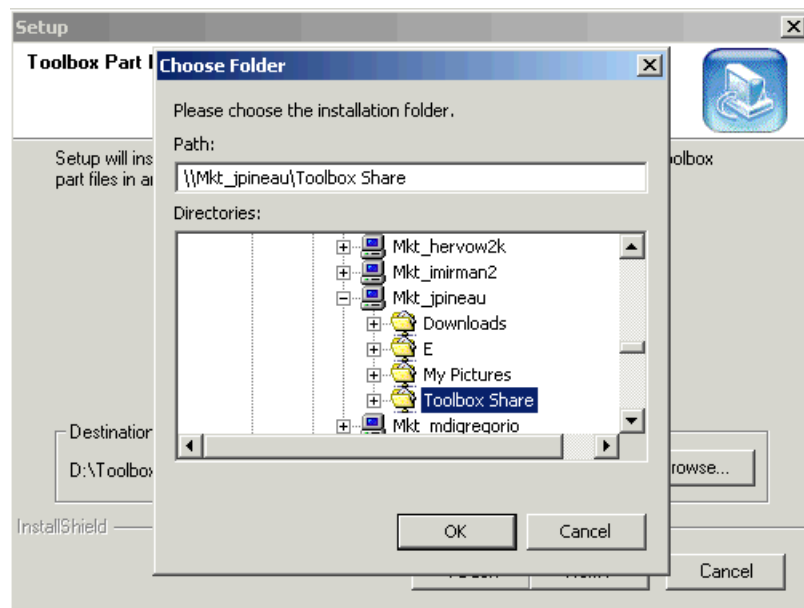
- b. Identify location of local SolidWorks installation



- c. From the Toolbox Part File folder dialog (shown below), select the Browse button

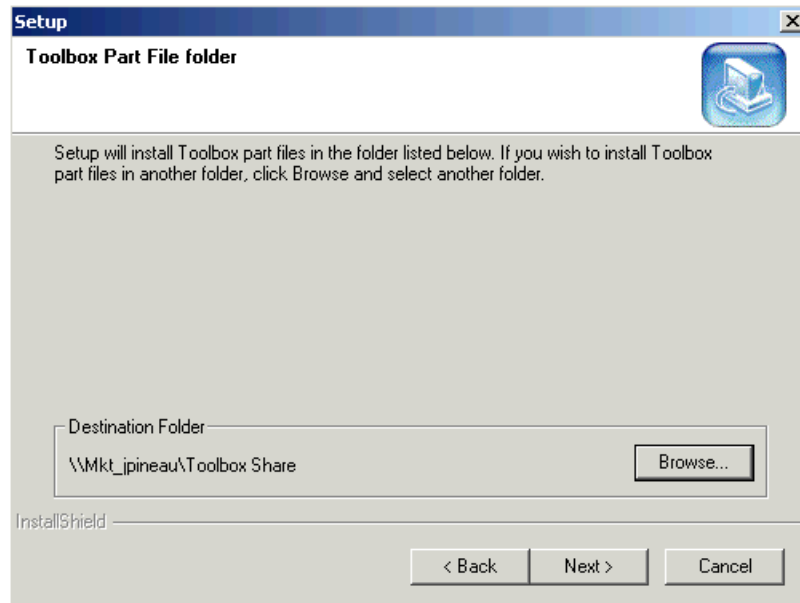


- d. Browse for the Toolbox share or enter the path name (UNC format) to the shared area then select OK (in this example [\\mkt\\_jpineau\Toolbox Share](\\mkt_jpineau\Toolbox Share))

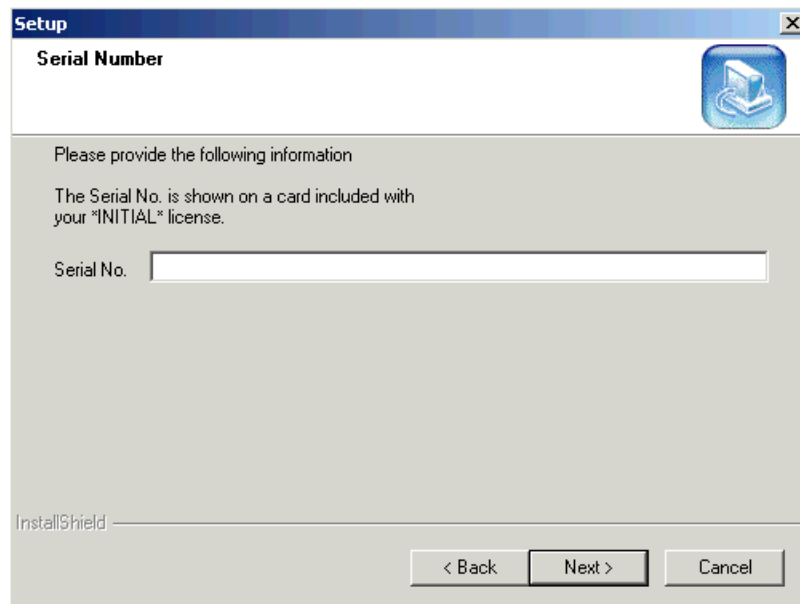




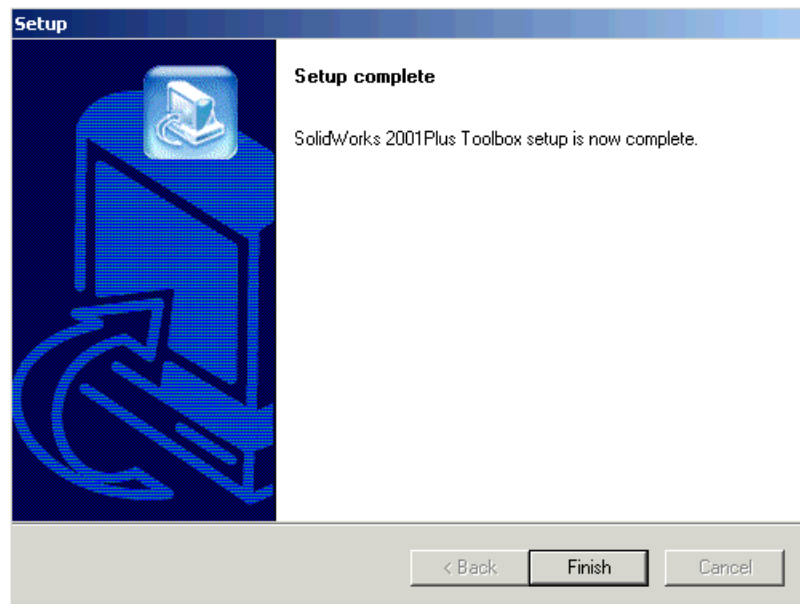
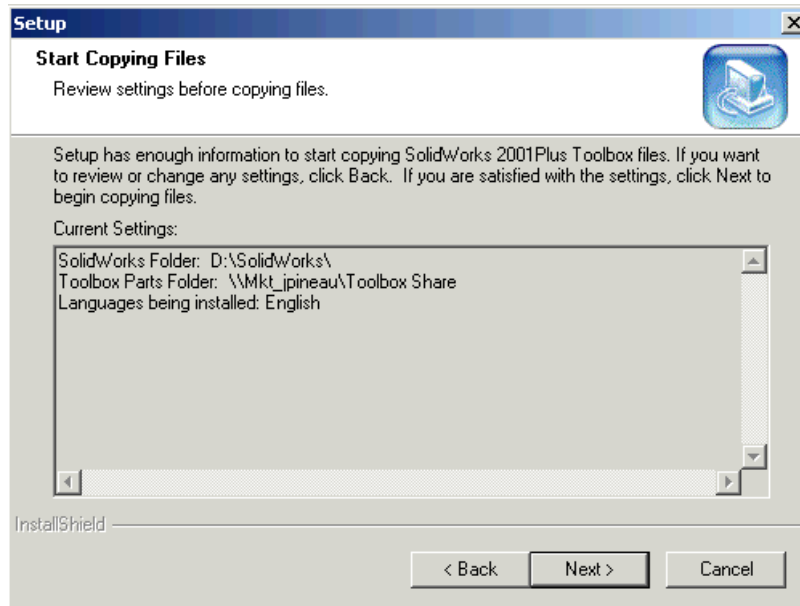
- e. The correct path names should now be displayed, select the Next button



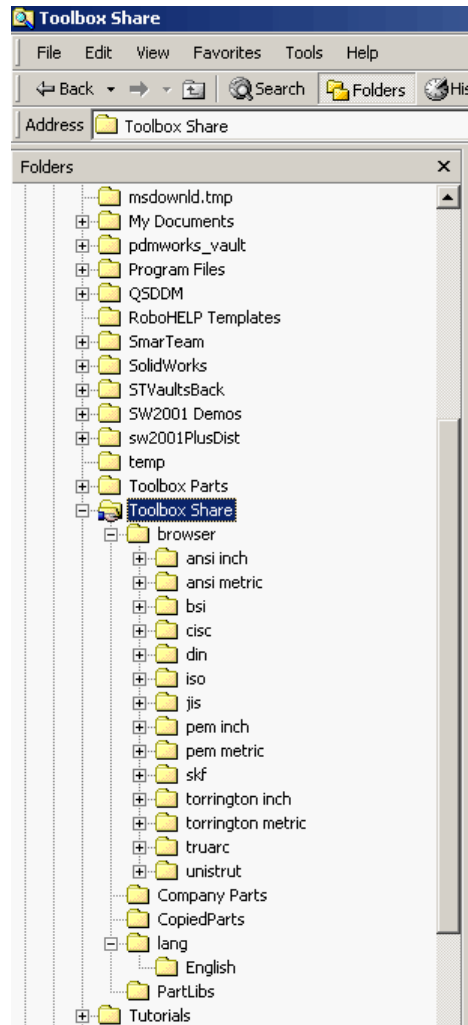
- f. Enter Toolbox serial number (not necessary if you are a SolidWorks Office user)



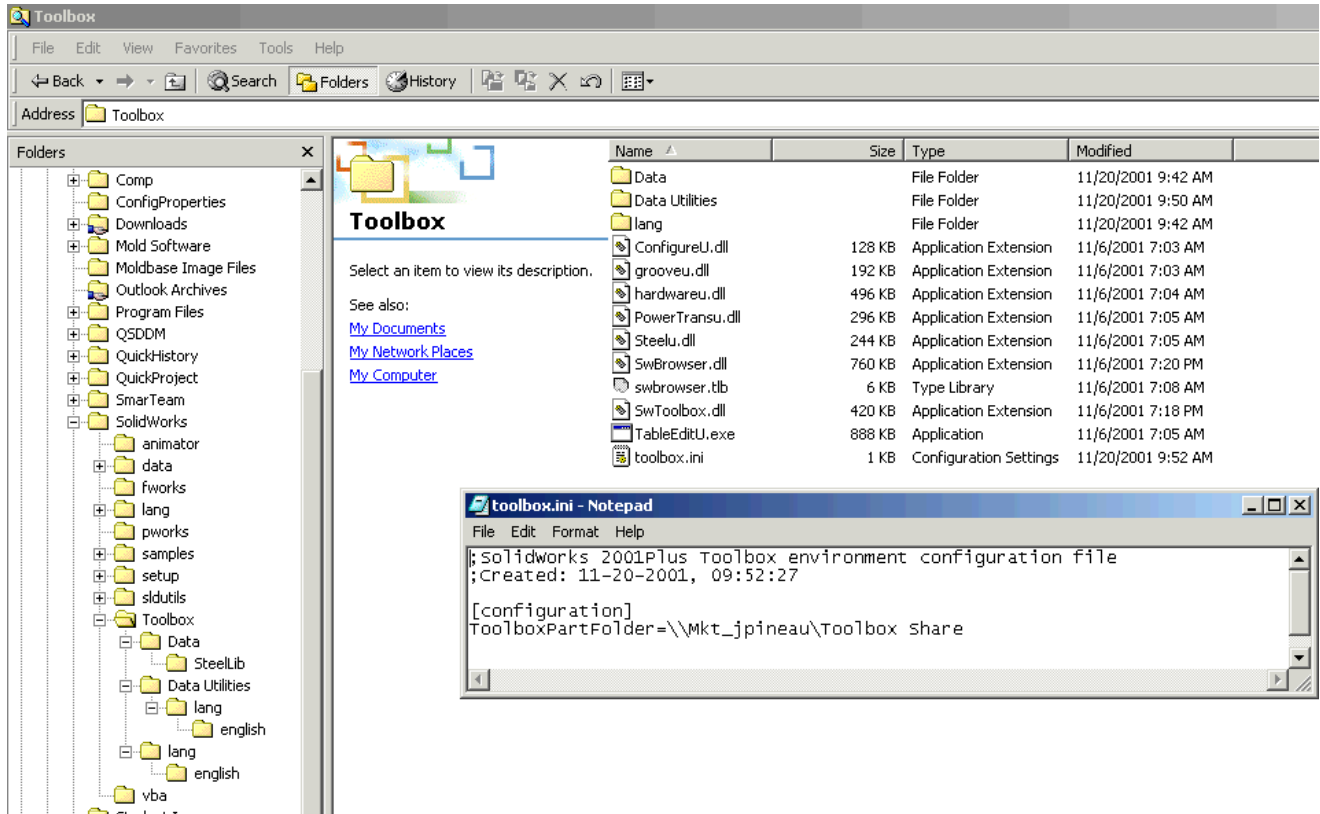
- g. A confirmation dialog is displayed, hit Next to complete installation



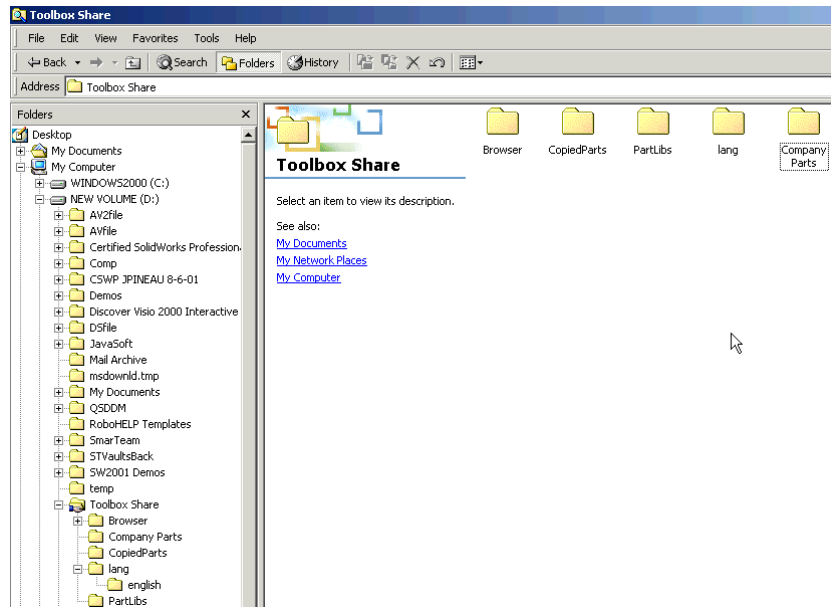
2. The Toolbox shared files directories have now been successfully installed on the share machine in the location designated.



- On your local system, if you browse the directory where you loaded SolidWorks, you will notice that files were added for the Toolbox add-in. One of the most important files is the Toolbox.ini file located under the Toolbox folder (see example below). This file is important in that it notified the Toolbox add-in where to look for the shared files.



OPTIONAL: Create a folder for any shared custom parts that will be added to Toolbox via the 'add-my-parts wizard' (in this case I have created a directory called *Company Parts* in the *Toolbox Share* directory)



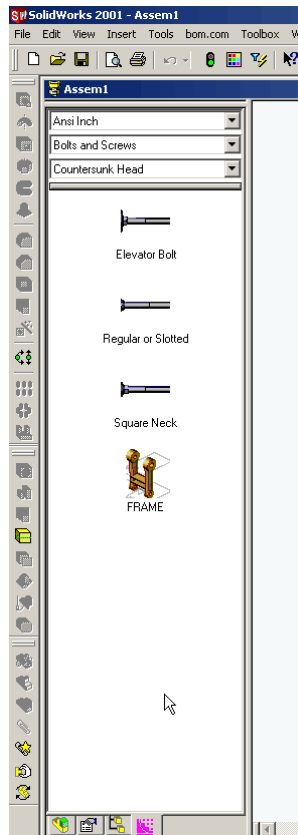
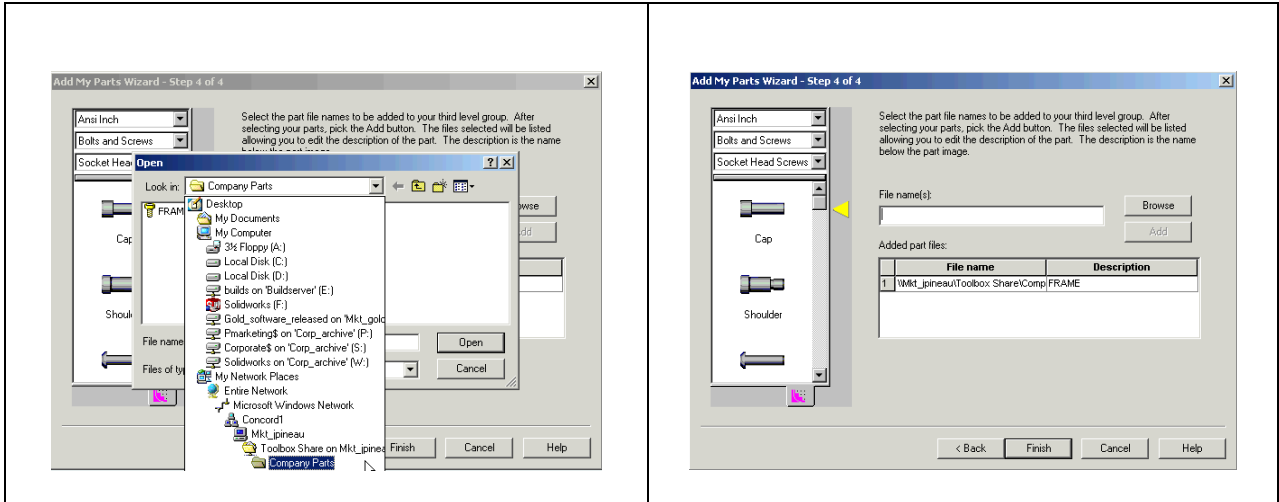
## **Loading Toolbox – Additional Users**

1. Load SolidWorks 2001 Plus
2. Load the corresponding version of SolidWorks Toolbox (available from the Subscription Support website)
3. Install Toolbox in the same manner as described above.

## Adding Shared Custom Parts – ‘Add-my-parts wizard’

When adding custom parts via the add-my-parts wizard, the parts must reside in a shared location.

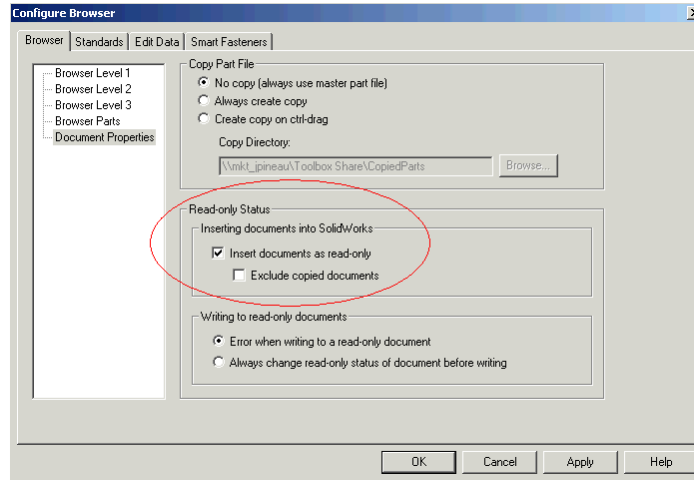
The important thing to remember is that when you are adding the part you must browse the shared location so that the proper path name is acquired. See example below:



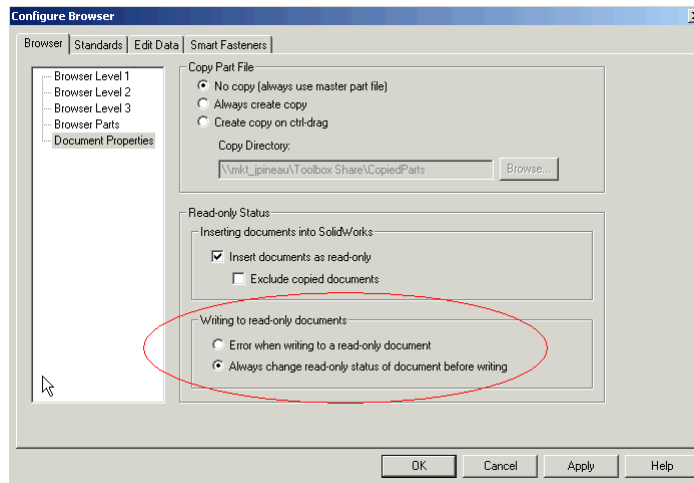
## Allowing Parts to be inserted by multiple users

In Service Pack 9 of SolidWorks 2001 a fix was made to Toolbox to allow a user to drag and drop a part into an assembly when the same part was being used in another assembly by another user.

This requires all users to set the 'Insert documents read-only' option (using Configure Browser -> Document Properties) as shown below:



In Service Pack 10 of SolidWorks 2001 an additional fix was made to allow a user to use parts that came from a read only directory.



***IMPORTANT NOTE: THIS MUST BE DONE AT EACH SEAT WHERE TOOLBOX IS INSTALLED.***