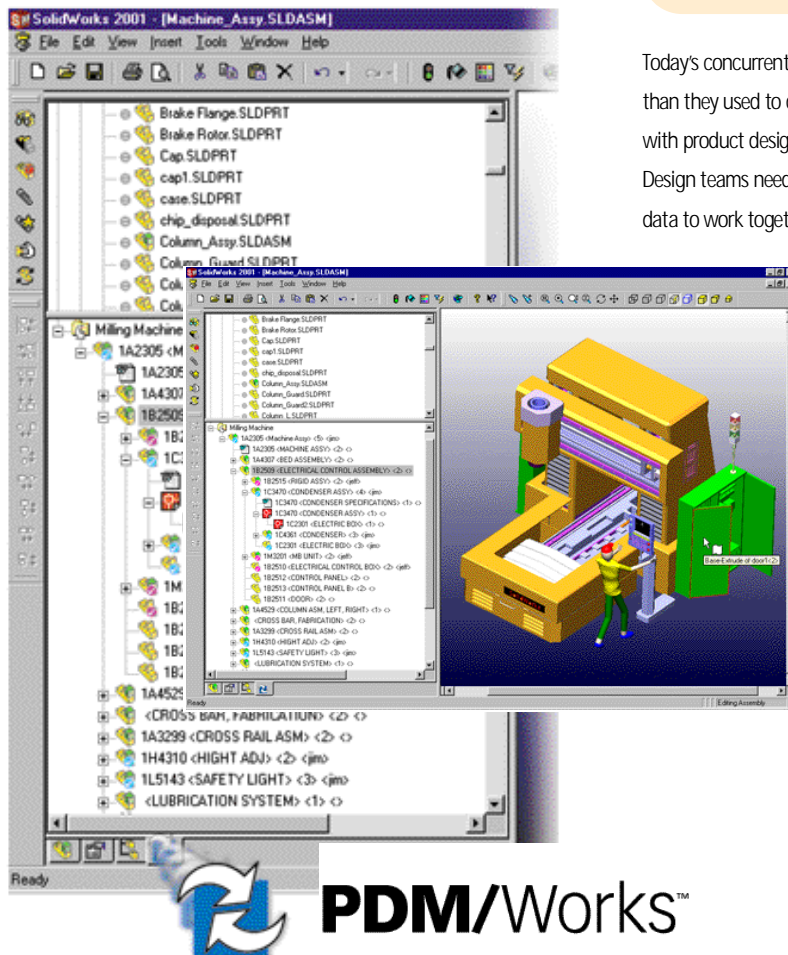


Manage Your Design Data — Not Your PDM System.

Product data management (PDM) should be simple, secure and straightforward, empowering engineers to innovate and create while managing product data easily and efficiently. The SolidWorks® 3D mechanical design system has provided a solution to enhance innovation and accelerate time to market. Now, design organizations can turbocharge SolidWorks with PDM/Works™ 2001, a simple, secure and affordable approach to managing product design data.

PDM/Works 2001 At A Glance

- Design-Centric Data Management For SolidWorks
- Integrated, Stand-Alone Data Management
- Web-Enabled Access To Design Information
- Secure Revision Control And Vaulting
- Easy To Implement And Use
- Affordable For Everyone



Today's concurrent engineering environments do a lot more electronically than they used to do and create large amounts of CAD data associated with product design concepts, components, drawings and assemblies. Design teams need an easy-to-use, efficient system for managing this data to work together effectively and meet the competitive demands of

the marketplace. With PDM/Works 2001, engineers have a design data management solution that is integrated directly inside SolidWorks. This design-centric approach to data management saves time, money, manpower and aggravation. PDM/Works also serves as the support structure for confidently propagating accurate information throughout the enterprise. PDM/Works can manage SolidWorks data and any other file type used in Windows®-based design environments, including:

- Analysis files
- Engineering Change Orders (ECOs)
- Microsoft Word files
- Microsoft Excel spreadsheets
- eDrawings
- PDFs, graphics, images and animations
- IGES files to/from vendors
- Legacy DWG and DXF files
- Design specifications.

PDM/Works 2001 Capabilities

- Automatic Revision Control
- Configuration Management
- Document History
- File Check In/Check Out
- Preview Viewing
- Report Generation
- Searching
- Where Used

Faster Time-to-Market

Effective, straightforward management of product design information eliminates confusion over file control and accuracy, streamlines the design process, and produces faster time-to-market. While traditional PDM systems are expensive, time-consuming and difficult to implement, deploying PDM/Works 2001 is simple, fast and affordable. Installing and configuring the software, which is so easy to use that engineers can begin working with it immediately, takes less than a couple of hours. Stop trying to manage the extremes of either spending too much time and money on the implementation of an all encompassing PDM system or doing nothing and leaving your design information at risk. Instead, keep the focus on design by using a design-centric solution to keep track of your design data. Take the approach that has a proven, positive impact on reducing product time-to-market. Select PDM/Works for your design environment.

Now Available: PDM/Works Standalone

This stand-alone tool enables design team members, who are not SolidWorks users but still have data management needs, to access

"PDM/Works has enabled us to increase the number of new concepts we develop in SolidWorks by 50 percent."

Daniel Bourgeois,
Vice President, Research and Development
Ritvik Holdings, Inc.

and manage product data. Activities such as schematic board layout, legacy CAD data management, preparation of user manuals, product specifications, document control, support of the ECR/ECO process and interfacing with vendors do not require a solid

modeler but do require the ability to access and manage product data. PDM/Works Standalone meets these needs enabling full team involvement throughout all phases of a product's lifespan.

Now Available: PDM/Works Portal

A Web-based application provides browser access to the complete PDM/Works project structure and associated data. By providing dynamic access to product design data through a standard Web browser, access to design information is available in real time in a manner that is affordable and makes sense.

Learn More About DesignSource Technology

PDM/Works 2001 was developed by DesignSource Technology, Inc., a company with extensive experience in CAD/CAM and mechanical design. The software is designed to meet the daily data management needs of today's design engineers. Why struggle to manage your design data when PDM/Works 2001 delivers robust design data management capabilities at an affordable price, enabling all members of the design team to embrace data management technology quickly, easily and cost-effectively?

For More Information

To learn more about PDM/Works 2001, contact your SolidWorks reseller, visit DesignSource Technology on the web or contact our Boston office directly.

DesignSource
TECHNOLOGY

DesignSource Technology, Inc.
352 Turnpike Road, Suite 203
Southborough, MA 01772
Telephone: 508-481-3262
Fax: 508-481-8559
Web: www.pdmworks.com

