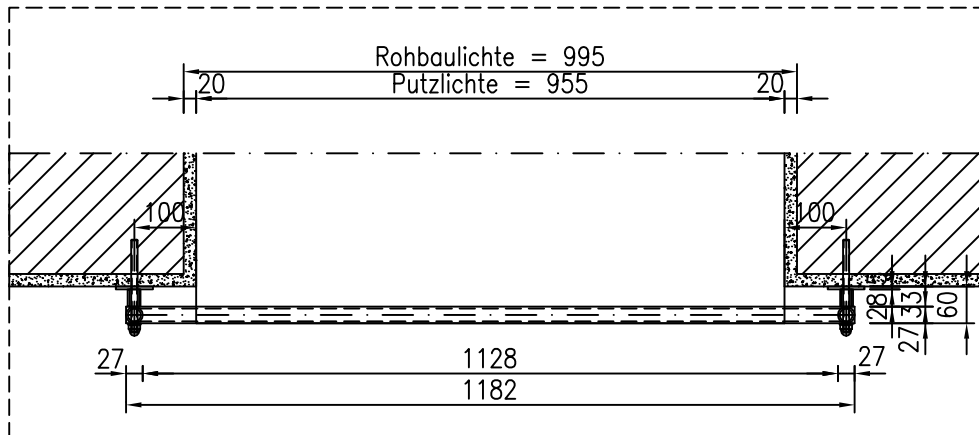
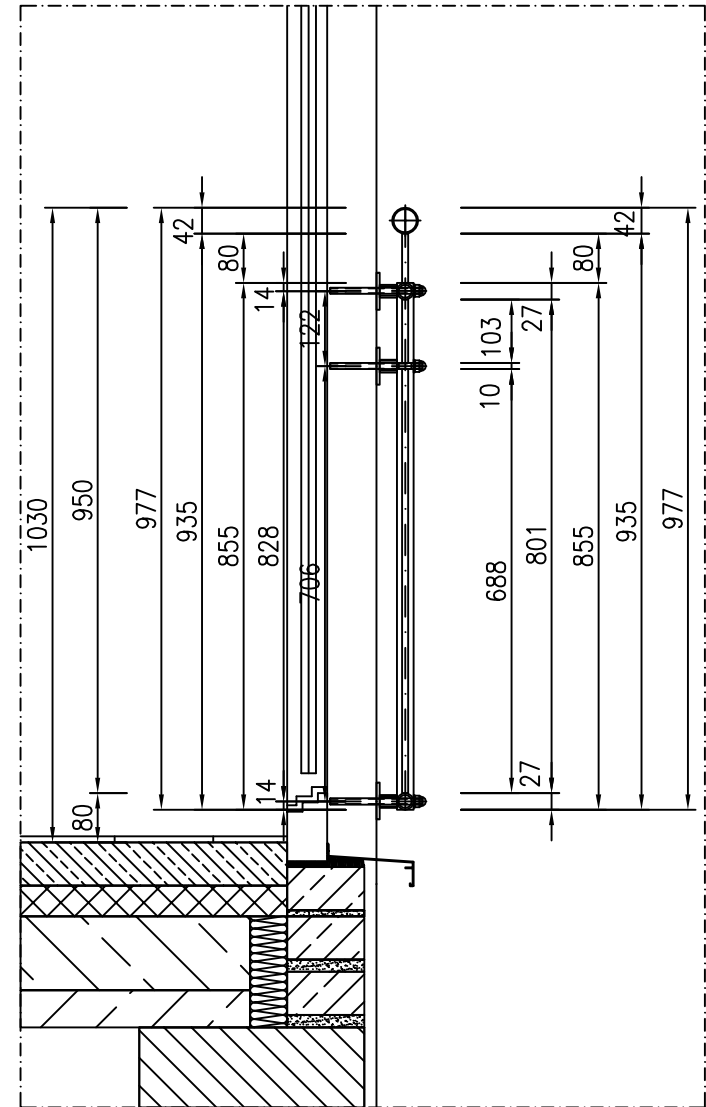


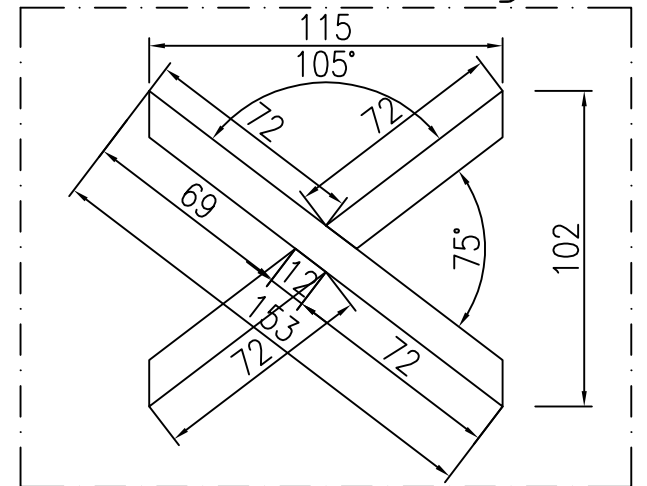
Schnitt A-A



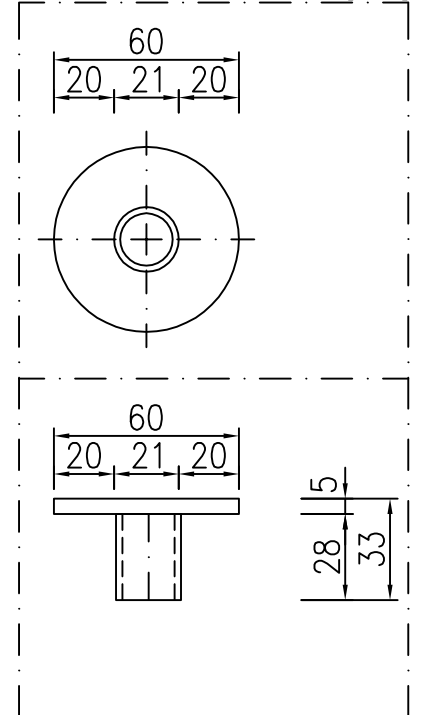
Schnitt B-B



Detail Füllung



Detail Wandbefestigung 6X



Profile						
Feld	Art.Nr.	Benennung	Stck.	Zuschnittslänge	Winkel	
	00_RD_12	Rundstahl 12mm	4	72.0	52.7/	74.6/
	00_RD_12		4	72.0	105.4/	127.3/
	00_RD_12		2	80.0	90.0/	90.0/
	00_RD_12		8	103.0	90.0/	90.0/
	00_RD_12		4	153.0	127.3/	52.7/
	00_RD_12		8	688.0	90.0/	90.0/
	00_RO_21	Konstrsr. dm. 21,3x2	6	28.0	90.0/	90.0/
	00_RO_27	Konstrsr. dm. 26,9x2	2	855.0	45.0/	45.0/
	00_RO_27		2	1182.0	45.0/	45.0/
	00_RO_42	Konstrsr. dm. 42,4x2,3	1	1182.0	90.0/	90.0/
	FL_20_10	Flach 20x10	1	1128.0	90.0/	90.0/

Zubehör-Teile					
Feld	Art.Nr.	Benennung	Stck.	Meterware	
	PL00_42	St.-Schale Ø42	2		