

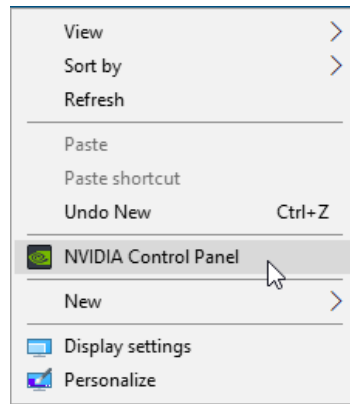
Graphics performance readme

The Graphics performance demonstration requires SW2019 PR1. The dataset will be delivered after PR1 is released.

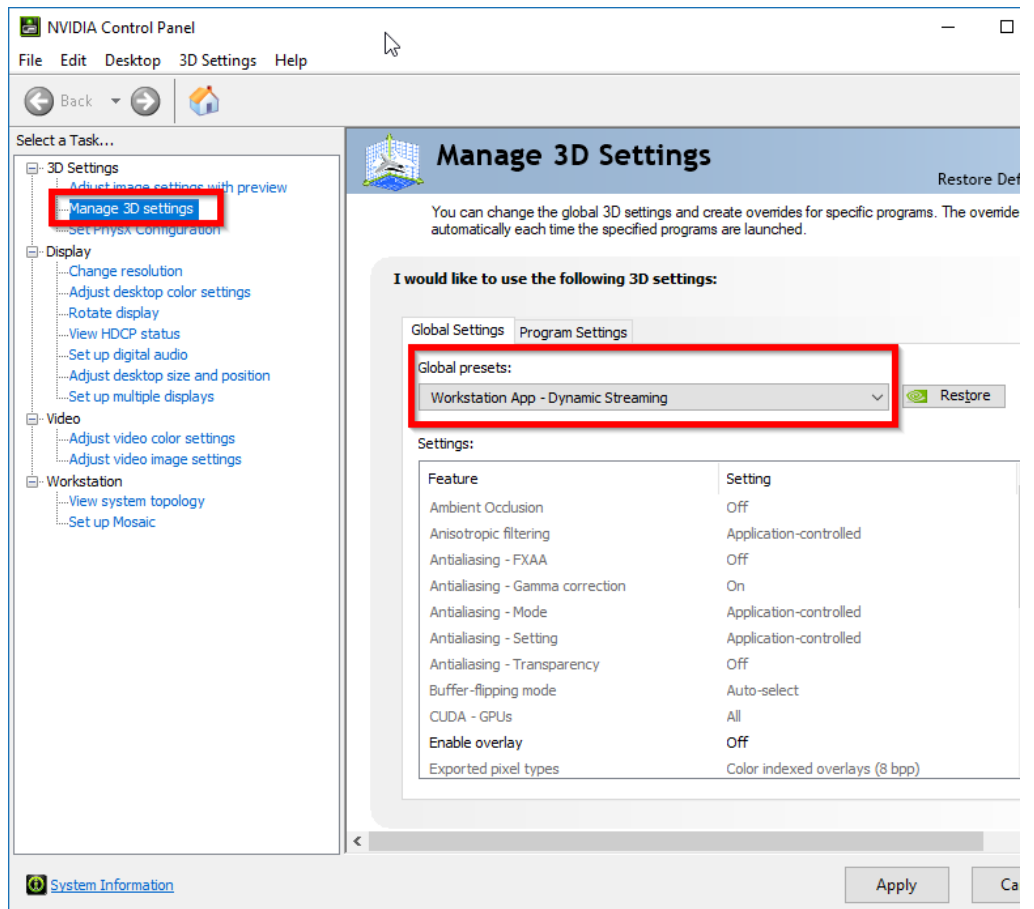
If you are using an NVIDIA Graphics card, make sure that you are using the latest driver recommended on the SOLIDWORKS system requirements website. Currently the recommended driver for NVidia is 386.07.

Certified (Recommended) Driver Results						
System	Card	Driver		SOLIDWORKS	OS	Notes
Precision M6800	NVIDIA Quadro K5100M	386.07	✓	2018	Win10 x64	Notes

RMB on the desktop and choose NVIDIA Control Panel



Go to manage 3D settings and set the Global Setting Preset to **Workstation App – Dynamic Streaming** (last one in the list)



In SolidWorks make sure that you enable the option for performance boost

System Options - Performance

System Options Document Properties Search Options

General
MBD
Drawings
 Display Style
 Area Hatch/Fill
 Performance
Colors
Sketch
 Relations/Snaps
Display
Selection
Performance
Assemblies
External References
Default Templates
File Locations
FeatureManager
Spin Box Increments
View
Backup/Recover
Touch
Hole Wizard/Toolbox
File Explorer
Search
Collaboration
Messages/Errors/Warnings
Import
Export

Verification on rebuild (enable advanced body checking)
 Ignore self-intersection check for some sheet metal features

Transparency
 High quality for normal view mode
 High quality for dynamic view mode

Curvature generation: Only on demand

Off More (slower) Less (faster)
Level of detail: [Slider]

Assemblies
 Automatically load components lightweight
 Always resolve subassemblies

Check out-of-date lightweight components: Don't Check
Resolve lightweight components: Prompt
Rebuild assembly on load: Always

Off Fast Slow
Mate animation speed: [Slider]

Off Fast Slow
SmartMate sensitivity: [Slider]

Less More
Magnetic mate proximity: [Slider]

Purge cached configuration data
 Update mass properties while saving document
 Use shaded preview
 Use software OpenGL
 Magnetic mate pre-alignment [Go To Image Quality](#)

Enable performance pipeline (Beta functionality, requires SOLIDWORKS restart)

Parent