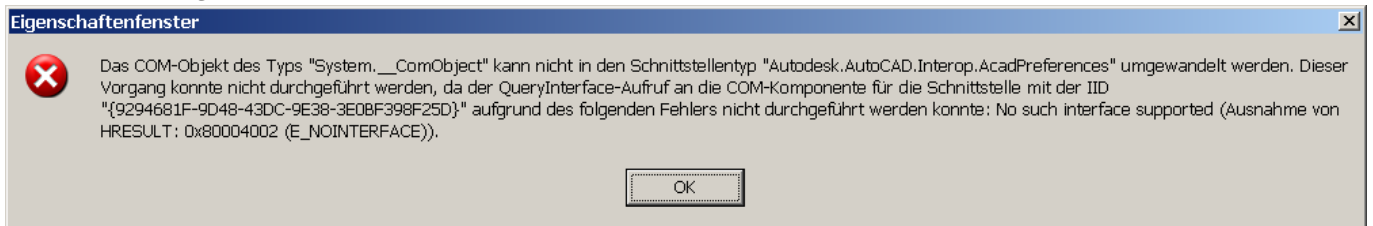
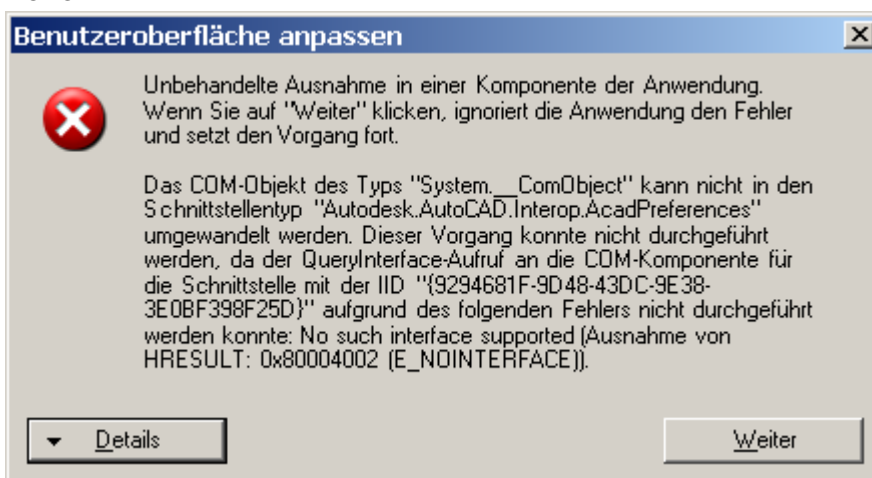


Fehlermeldungen bei AutoCAD 2010-64bit SP1 beim Bearbeiten der Anpassungsdatei

Fehlermeldung beim Zuordnen eines Icons zu einem Befehl:



Fehlermeldung beim Versuch einen Befehl in einen Werkzeugkasten, zu den Tastaturkürzel,... zu ziehen:



Informationen über das Aufrufen von JIT-Debuggen anstelle dieses Dialogfelds finden Sie am Ende dieser Meldung.

***** Ausnahmetext *****

System.InvalidCastException: Das COM-Objekt des Typs "System.__ComObject" kann nicht in den Schnittstellentyp "Autodesk.AutoCAD.Interop.AcadPreferences" umgewandelt werden. Dieser Vorgang konnte nicht durchgeführt werden, da der QueryInterface-Aufruf an die COM-Komponente für die Schnittstelle mit der IID "{9294681F-9D48-43DC-9E38-3E0BF398F25D}" aufgrund des folgenden Fehlers nicht durchgeführt werden konnte: No such interface supported (Ausnahme von HRESULT: 0x80004002 (E_NOINTERFACE)).

bei Autodesk.AutoCAD.Customization.CommandListViewDragDrop.getResourceFile(MenuMacro menuMacro)

bei Autodesk.AutoCAD.Customization.CommandListViewDragDrop.OnItemDrag(ItemDragEventArgs e)

bei System.Windows.Forms.ListView.LvnBeginDrag(MouseButtons buttons, NMLISTVIEW nmlv)

bei System.Windows.Forms.ListView.WmReflectNotify(Message& m)

bei System.Windows.Forms.ListView.WndProc(Message& m)

bei Autodesk.AutoCAD.Customization.ListViewEx.WndProc(Message& msg)

bei System.Windows.Forms.Control.ControlNativeWindow.WndProc(Message& m)

bei System.Windows.Forms.NativeWindow.Callback(IntPtr hWnd, Int32 msg, IntPtr wparam, IntPtr lParam)

***** Geladene Assemblys *****

dlp Ziviltechniker-GmbH

mscorlib

Assembly-Version: 2.0.0.0.

Win32-Version: 2.0.50727.3082 (QFE.050727-3000).

CodeBase: file:///c:/WINDOWS/Microsoft.NET/Framework64/v2.0.50727/mscorlib.dll.

acdbmgd

Assembly-Version: 18.0.0.0.

Win32-Version: 18.0.215.0.0.

CodeBase: file:///C:/Program%20Files/AutoCAD%202010/AcdbMgd.DLL.

msvcm90

Assembly-Version: 9.0.30729.1.

Win32-Version: 9.00.30729.1.

CodeBase:

file:///C:/WINDOWS/WinSxS/amd64_Microsoft.VC90.CRT_1fc8b3b9a1e18e3b_9.0.30729.1_x-ww_A17E7C1E/msvcm90.dll.

PresentationFramework

Assembly-Version: 3.0.0.0.

Win32-Version: 3.0.6920.1500 built by: QFE.

CodeBase:

file:///C:/WINDOWS/assembly/GAC_MSIL/PresentationFramework/3.0.0.0__31bf3856ad364e35/PresentationFramework.dll.

WindowsBase

Assembly-Version: 3.0.0.0.

Win32-Version: 3.0.6920.1427 built by: SP.

CodeBase:

file:///C:/WINDOWS/assembly/GAC_MSIL/WindowsBase/3.0.0.0__31bf3856ad364e35/WindowsBase.dll

System

Assembly-Version: 2.0.0.0.

Win32-Version: 2.0.50727.3053 (netfxsp.050727-3000).

CodeBase:

file:///C:/WINDOWS/assembly/GAC_MSIL/System/2.0.0.0__b77a5c561934e089/System.dll.

PresentationCore

Assembly-Version: 3.0.0.0.

Win32-Version: 3.0.6920.1427 built by: SP.

CodeBase:

file:///C:/WINDOWS/assembly/GAC_64/PresentationCore/3.0.0.0__31bf3856ad364e35/PresentationCore.dll.

System.Drawing

Assembly-Version: 2.0.0.0.

dlp Ziviltechniker-GmbH

Win32-Version: 2.0.50727.3053 (netfxsp.050727-3000).

CodeBase:

file:///C:/WINDOWS/assembly/GAC_MSIL/System.Drawing/2.0.0.0__b03f5f7f11d50a3a/System.Drawing.dll.

System.Xml

Assembly-Version: 2.0.0.0.

Win32-Version: 2.0.50727.3082 (QFE.050727-3000).

CodeBase:

file:///C:/WINDOWS/assembly/GAC_MSIL/System.Xml/2.0.0.0__b77a5c561934e089/System.Xml.dll.

AdWindowsInterop

Assembly-Version: 0.0.0.0.

Win32-Version: 18.0.215.0.0.

CodeBase: file:///C:/Program%20Files/AutoCAD%202010/AdWindowsInterop.DLL.

AdWindows

Assembly-Version: 2.1.0.0.

Win32-Version: 2.1.123.215.

CodeBase: file:///C:/Program%20Files/AutoCAD%202010/AdWindows.DLL.

AdWindows.resources

Assembly-Version: 2.1.0.0.

Win32-Version: 18.0.55.0.0.

CodeBase: file:///C:/Program%20Files/AutoCAD%202010/de-DE/AdWindows.resources.DLL.

acmgd

Assembly-Version: 18.0.0.0.

Win32-Version: 18.0.215.0.0.

CodeBase: file:///C:/Program%20Files/AutoCAD%202010/acmgd.DLL.

System.Configuration

Assembly-Version: 2.0.0.0.

Win32-Version: 2.0.50727.3053 (netfxsp.050727-3000).

CodeBase:

file:///C:/WINDOWS/assembly/GAC_MSIL/System.Configuration/2.0.0.0__b03f5f7f11d50a3a/System.Configuration.dll.

AcWindows

Assembly-Version: 18.0.0.0.

Win32-Version: 18.0.215.0.0.

CodeBase: file:///C:/Program%20Files/AutoCAD%202010/AcWindows.DLL.

System.Core

Assembly-Version: 3.5.0.0.

Win32-Version: 3.5.30729.1 built by: SP.

CodeBase:

file:///C:/WINDOWS/assembly/GAC_MSIL/System.Core/3.5.0.0__b77a5c561934e089/System.Core.dll.

AcWindows.resources

Assembly-Version: 18.0.0.0.

Win32-Version: 18.0.55.0.0.

CodeBase: file:///C:/Program%20Files/AutoCAD%202010/de-DE/AcWindows.resources.DLL.

AcCui

Assembly-Version: 18.0.0.0.

Win32-Version: 18.0.215.0.0.

CodeBase: file:///C:/Program%20Files/AutoCAD%202010/AcCui.DLL.

System.Windows.Forms

Assembly-Version: 2.0.0.0.

Win32-Version: 2.0.50727.3053 (netfxsp.050727-3000).

CodeBase:

file:///C:/WINDOWS/assembly/GAC_MSIL/System.Windows.Forms/2.0.0.0__b77a5c561934e089/System.Windows.Forms.dll.

PresentationFramework.Aero

Assembly-Version: 3.0.0.0.

Win32-Version: 3.0.6920.1427 built by: SP.

CodeBase:

file:///C:/WINDOWS/assembly/GAC_MSIL/PresentationFramework.Aero/3.0.0.0__31bf3856ad364e35/PresentationFramework.Aero.dll.

PresentationFramework.Classic

Assembly-Version: 3.0.0.0.

Win32-Version: 3.0.6920.1427 built by: SP.

CodeBase:

file:///C:/WINDOWS/assembly/GAC_MSIL/PresentationFramework.Classic/3.0.0.0__31bf3856ad364e35/PresentationFramework.Classic.dll.

PresentationFramework.resources

Assembly-Version: 3.0.0.0.

Win32-Version: 3.0.6920.1427 built by: SP.

CodeBase:

file:///C:/WINDOWS/assembly/GAC_MSIL/PresentationFramework.resources/3.0.0.0_de_31bf3856ad364e35/PresentationFramework.resources.dll.

AcLayer

Assembly-Version: 18.0.0.0.

Win32-Version: 18.0.215.0.0.

CodeBase: file:///C:/Program%20Files/AutoCAD%202010/AcLayer.DLL.

AcLayer.resources

Assembly-Version: 18.0.0.0.

dlp Ziviltechniker-GmbH

Win32-Version: 18.0.55.0.0.

CodeBase: file:///C:/Program%20Files/AutoCAD%202010/de-DE/AcLayer.resources.DLL.

System.Web.Services

Assembly-Version: 2.0.0.0.

Win32-Version: 2.0.50727.3053 (netfxsp.050727-3000).

CodeBase:

file:///C:/WINDOWS/assembly/GAC_MSIL/System.Web.Services/2.0.0.0__b03f5f7f11d50a3a/System.Web.Services.dll.

ManagedMC3

Assembly-Version: 2.20.0.0.

Win32-Version: 3.14.1.

CodeBase: file:///C:/Program%20Files/AutoCAD%202010/ManagedMC3.DLL.

scsbttqu

Assembly-Version: 2.1.0.0.

Win32-Version: 2.0.50727.3053 (netfxsp.050727-3000).

CodeBase:

file:///C:/WINDOWS/assembly/GAC_MSIL/System/2.0.0.0__b77a5c561934e089/System.dll.

PresentationFramework.Luna

Assembly-Version: 3.0.0.0.

Win32-Version: 3.0.6920.1427 built by: SP.

CodeBase:

file:///C:/WINDOWS/assembly/GAC_MSIL/PresentationFramework.Luna/3.0.0.0__31bf3856ad364e35/PresentationFramework.Luna.dll.

AcCustomize

Assembly-Version: 18.0.0.0.

Win32-Version: 18.0.215.0.0.

CodeBase: file:///C:/Program%20Files/AutoCAD%202010/AcCustomize.DLL.

AcCustomize.resources

Assembly-Version: 18.0.0.0.

Win32-Version: 18.0.55.0.0.

CodeBase: file:///C:/Program%20Files/AutoCAD%202010/de-DE/AcCustomize.resources.DLL.

ContextualTabSelectorRules

Assembly-Version: 0.0.0.0.

Win32-Version: 18.0.215.0.0.

CodeBase: file:///C:/Program%20Files/AutoCAD%202010/AcWindows.dll.

mscorlib.resources

Assembly-Version: 2.0.0.0.

Win32-Version: 2.0.50727.3082 (QFE.050727-3000).

CodeBase: file:///c:/WINDOWS/Microsoft.NET/Framework64/v2.0.50727/mscorlib.dll.

UIAutomationProvider

Assembly-Version: 3.0.0.0.

Win32-Version: 3.0.6920.1427 built by: SP.

CodeBase:

file:///C:/WINDOWS/assembly/GAC_MSIL/UIAutomationProvider/3.0.0.0__31bf3856ad364e35/UIAutomationProvider.dll.

System.Windows.Forms.resources

Assembly-Version: 2.0.0.0.

Win32-Version: 2.0.50727.3051 (netfxsp.050727-3000).

CodeBase:

file:///C:/WINDOWS/assembly/GAC_MSIL/System.Windows.Forms.resources/2.0.0.0_de_b77a5c561934e089/System.Windows.Forms.resources.dll.

System.Data

Assembly-Version: 2.0.0.0.

Win32-Version: 2.0.50727.3053 (netfxsp.050727-3000).

CodeBase:

file:///C:/WINDOWS/assembly/GAC_64/System.Data/2.0.0.0__b77a5c561934e089/System.Data.dll.

System.Design

Assembly-Version: 2.0.0.0.

Win32-Version: 2.0.50727.3053 (netfxsp.050727-3000).

CodeBase:

file:///C:/WINDOWS/assembly/GAC_MSIL/System.Design/2.0.0.0__b03f5f7f11d50a3a/System.Design.dll

.

System.resources

Assembly-Version: 2.0.0.0.

Win32-Version: 2.0.50727.3051 (netfxsp.050727-3000).

CodeBase:

file:///C:/WINDOWS/assembly/GAC_MSIL/System.resources/2.0.0.0_de_b77a5c561934e089/System.resources.dll.

Accessibility

Assembly-Version: 2.0.0.0.

Win32-Version: 2.0.50727.3053 (netfxsp.050727-3000).

CodeBase:

file:///C:/WINDOWS/assembly/GAC_MSIL/Accessibility/2.0.0.0__b03f5f7f11d50a3a/Accessibility.dll.

Autodesk.AutoCAD.Interop

Assembly-Version: 18.0.0.0.

Win32-Version: 18.0.55.0.0.

CodeBase:

file:///C:/WINDOWS/assembly/GAC_MSIL/Autodesk.AutoCAD.Interop/18.0.0.0__eed84259d7cbf30b/Autodesk.AutoCAD.Interop.dll.

***** JIT-Debuggen *****

Um das JIT-Debuggen (Just-In-Time) zu aktivieren, muss in der Konfigurationsdatei der Anwendung oder des Computers (machine.config) der jitDebugging-Wert im Abschnitt system.windows.forms festgelegt werden. Die Anwendung muss mit aktiviertem Debuggen kompiliert werden.

Zum Beispiel:

```
<configuration>  
  <system.windows.forms jitDebugging="true" />  
</configuration>
```

Wenn das JIT-Debuggen aktiviert ist, werden alle nicht behandelten Ausnahmen an den JIT-Debugger gesendet, der auf dem Computer registriert ist, und nicht in diesem Dialogfeld behandelt.