

SAP® PLM – Inventor – Integration Administration of Autodesk Inventor with SAP®-DVS

Document management with SAP

With mySAP®PLM, SAP AG offers the general administration of all documents which are created during the life cycle of a product. At the same time, CAD Desktop is a tool which provides excellent support for CAD design work especially in the field of 3-D. The close connection with PLM of SAP enables data to become available at an early stage of the design process. Product Lifecycle Management thus already begins with the start of the design work and not at the end of this work through an interface.

The link between Inventor and CAD Desktop in the SAP system allows all components which have been designed using the CAD system to be administrated. The following benefits arise:

- Access to CAD data is coordinated through the versioning and status administration so that various users can work on a component at the same without data being lost or inconsistencies arising (Concurrent Engineering).
- Using examination mechanisms, check-in and check-out assistants prevent inconsistent data contents from being produced and offer solutions should a conflict arise.

Integration with SAP®CAD-Desktop

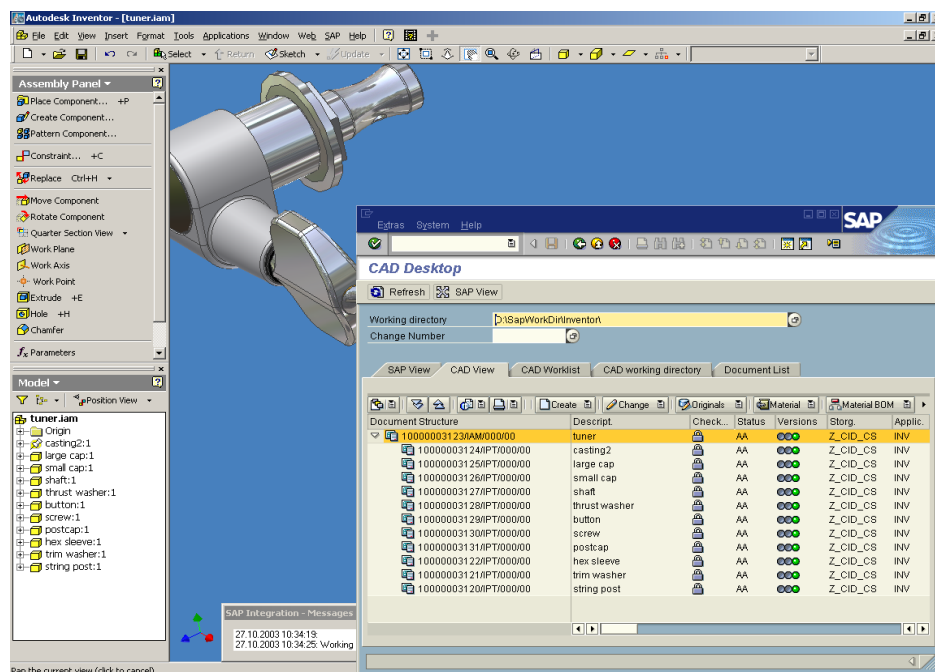


Fig.: Inventor component, represented and administrated in SAP®CAD Desktop

Since the components and drawings including their dependent documents are administrated as structures in SAP, related original files can be loaded in Inventor directly from the SAP system for processing or display through the CAD Desktop thereby avoiding redundant operations.

All authorised users have access to the original documents filed in a central security area. They can thus follow the development process and also make changes. This reduces the number of redundant operations.

Through the integration of the SAP change service, a change history is always available for the document.

Configurable data exchanges between the SAP system and Inventor avoid unnecessary multiple data input.

Thus properties of Inventor files can be passed on during the creation of the document information records, SAP data can be transferred in the Inventor properties and therefore also in the title blocks of the drawings, and document data can be imported during the creation of materials.

Through the support of CAD Desktop 2 functionalities, the mass creation of documents and materials, for example during the import of a component, can be easily carried out.

Material piece lists can be directly generated from the structure display of the component. This assures that the design piece lists are readily available to all successive procedures, e.g. production, production planning, etc.

Overview of the functions of SAP®PLM Integration for Inventor:

Document management

- Create documents (RFC/BAPI Interface)
- Store, store under, create components
 - with or without dialogue
 - while using the change numbers
 - configurable data transfer
 - formation of an unequivocal file name
- Display/change document (via RFC)
- Document search for opening and inserting
 - from CAD Desktop view "Document Search" (CV04N)
 - use of the CAD Desktop options "Display Original", "Change Original" and "Insert Original"
- Administration of 3-D models in SAP DVS
 - single and assembled parts
 - presentations and drawings
 - iParts and derived parts
- Match file properties for use in title block
 - matching of the Inventor attributes from SAP data upon request
 - optional during opening and storing of an Inventor file or when changing a document information record
 - supporting user-defined attributes
- Producing neutral files
 - automatic writing of the Inventor-own export formats or upon request, and transferral of the file to SAP as an additional original

Material management

- Create, change, allocate material master records per CAD Desktop
- Accounting for material-document object link when matching title block

Piece list management

- Create material piece lists, change from the CAD Desktop
- Display piece lists (module, structure, quantity overview and one-stage display)

Change service

- Linking current document with SAP change service
- Dialogue for creating a change master record (change number)
- Search for and allocation of change numbers

Additional solutions which you may want to use:

AutoORG® - Technical Workplace (TWP)

Integration platform for searching and editing data from various systems

AutoORG® - Tech Doc (TEC)

Integration platform for searching and editing data from various systems

AutoORG® - Technical Application (TAP)

Links between ERP and CAD tailored to specific industries

mySAP® PLM - Inventor Interface

AutoORG® - PlottingSolution

Plot management system for controlling output onto small and large-format output devices with an integration to SAPgui

AutoORG®-Conversion Server

Automatic creation of neutral formats (TIF/PDF) from CAD and Office data with status change and release

Parts management interface between mySAP® PLM und CADENAS PARTSolutions

