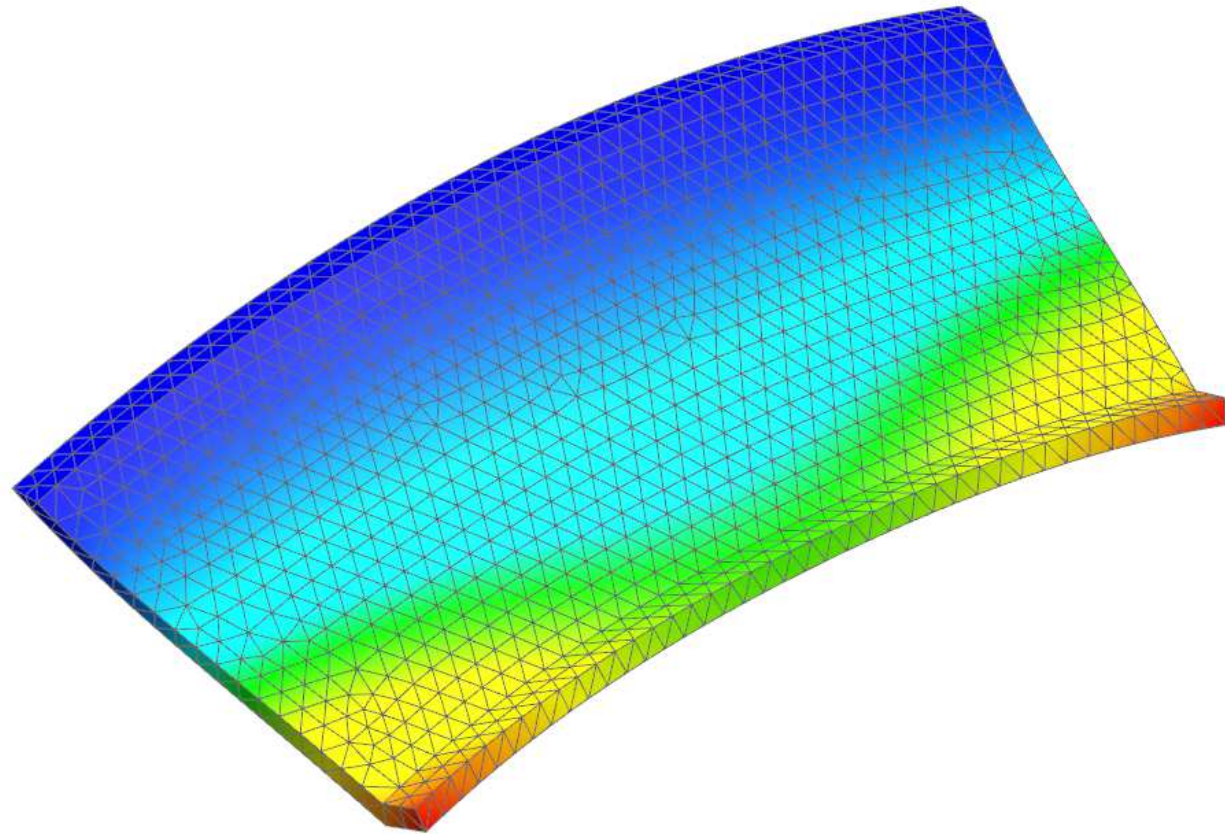
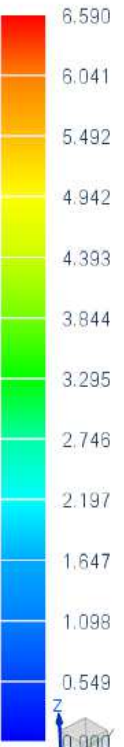


SU_FEM_Simplified_sim2 : Solution 1 Result
Subcase - Static Loads 1, Statischer Schritt 1
Verschiebung - Knoten, Betrag
Min : 0.000, Max : 6.590, Einheiten = mm
Verformung : Verschiebung - Knoten Betrag



Einheiten = mm

A small icon of a 3D coordinate system with X, Y, and Z axes. The Z-axis is vertical, the X-axis is horizontal, and the Y-axis is diagonal. The origin is labeled '0.000'.