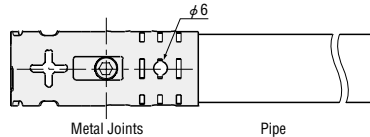


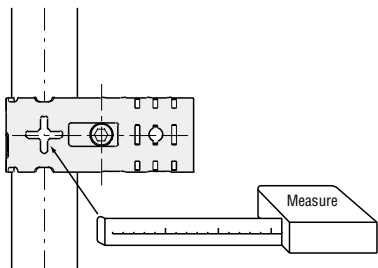
■Metal Joints with No Head

Features :

- (1) A screw hole has been provided to allow the metal joint to be firmly connected to a pipe.



- (2) A cross slot is provided to measure the distance between the centers of pipes after assembly. Hook the edge of a tape measure there.

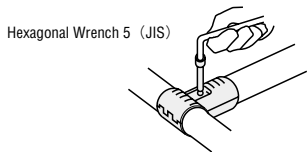


- (3) Material and coating can be chosen to the purpose of use.

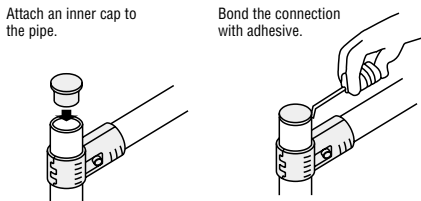
Catalog No.	Material	Coating
PBLSN, PBLN	SPCC	Black Chromate
PBLSNC		Nickel Plating
PBLSNS	SUS304	—

■How to Use Metal Joints

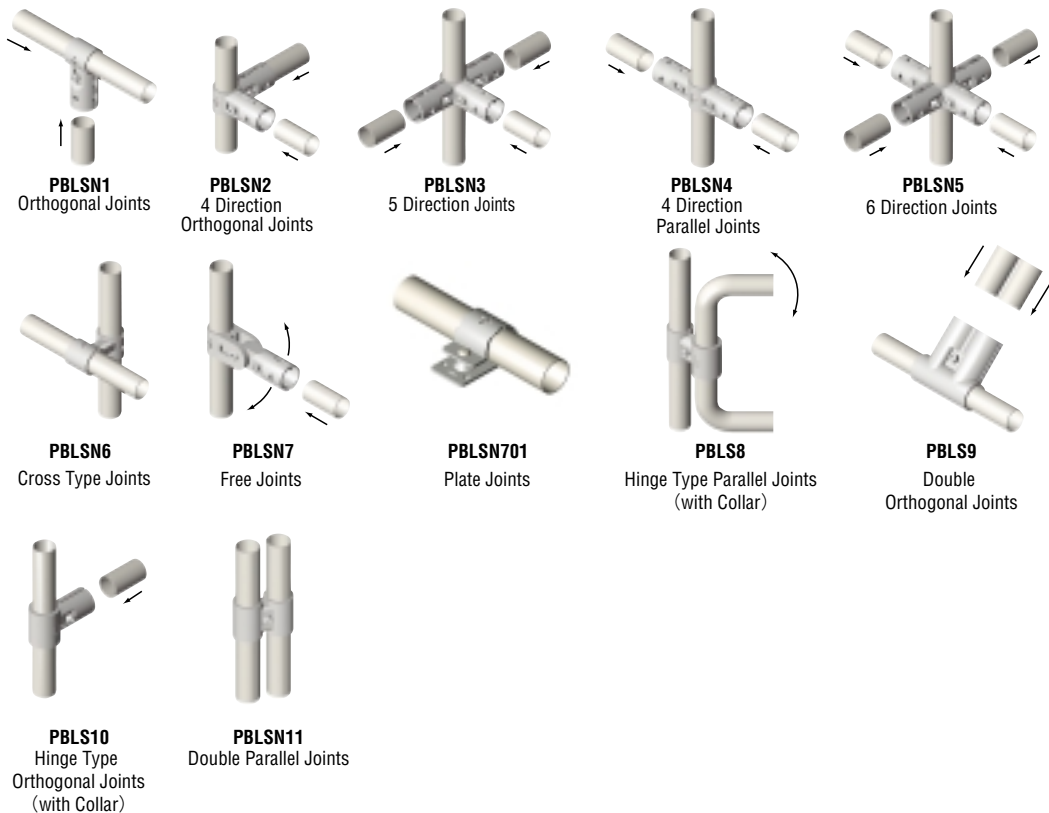
- (1) Use an Hexagonal wrench 5 (JIS) for tightening.



- (2) When using a metal joint, attach an inner cap (PJ503) to the end of pipe with adhesive. No inner caps are required for aluminum pipes.



■Metal Joint Connecting Shape



Type	M	Thickness	S
PBLSN	SPCC	2.6mm	Black Chromate
PBLSNC			Nickel Plating
PBLSNS	SUS304		—

Order Example
Catalog No.
PBLSN1

Production Time
6 Days

Price
euro

Volume Discount Rate

Quantity	1~50	51~299	300~999	1000~
Rate	—	5%	10%	15%

■Metal Joints with No Head

PBLSN1 PBLSNC1 PBLNS1

Orthogonal Joints

PBLSN2 PBLSNC2 PBLNS2

4 Direction Orthogonal Joints

PBLSN3 PBLSNC3 PBLNS3

5 Direction Joints

PBLSN4 PBLSNC4 PBLNS4

4 Direction Parallel Joints

PBLSN5 PBLSNC5 PBLNS5

6 Direction Joints

PBLSN6

Cross Type Joints

PBLSN7

Free Joints

PBLSN701

Plate Joints

■Both Ends Head Metal Joints

PBLS8

Hinge Type Parallel Joints

PBLS9

Double Orthogonal Joints

PBLS10

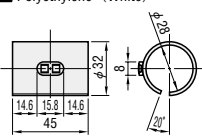
Hinge Type Orthogonal Joints

PBLS11

Double Parallel Joints

⚠PBLS8 and PBLN10 are used by inserting the pipe through the attached collar, sliding the pipe and the metal joint, and rotating.

Fig.1 Attached Collar Size



Catalog No.	Type	No.	Mass (g)	Component (Except Bracket)				Unit Price Qty. 1~50	
				Bolts	Nut	Q'ty	Others	PBLSN · PBLSNC · PBLN	PBLNS
With No Head	PBLSN (Black Chromate)	1	160	M6×25	M6	1	—	2.85	4.40
	PBLSNC (Nickel Plating)	2	250			2	—	5.25	8.00
	PBLSN (Stainless Steel)	3	325			3	—	7.70	11.90
	PBLSN (Stainless Steel)	4	250			2	—	4.40	6.70
	PBLSN (Stainless Steel)	5	400			4	—	10.50	15.90
	PBLSN (Stainless Steel)	6	150			1	—	3.40	—
Both Ends Head	PBLSN (Black Chromate)	7	260	M6×10	M6	2	—	5.70	—
	PBLSN (Black Chromate)	701	80			1	—	3.60	—
	PBLSN (Black Chromate)	8*	200			0	PJ605	4.70	—
	PBLSN (Black Chromate)	9*	289			1	PJ605	5.00	—
Both Ends Head	PBLSN (Black Chromate)	10	186	M6×25	M6	1	—	4.00	—
	PBLSN (Black Chromate)	11	165			1	—	3.40	—

* There is no nuts attached for PBLN8 and PBLN9 since there is a tap on the metal bracket.