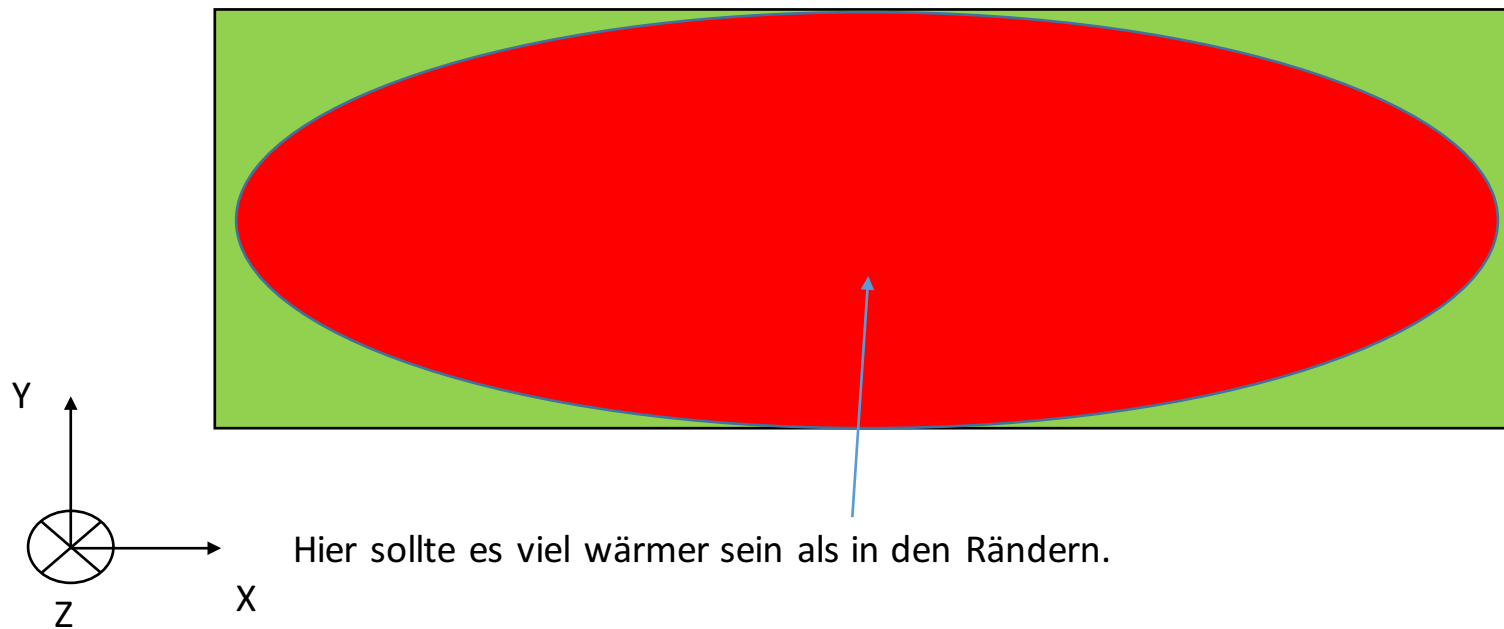


Temperaturverteilung sollte meiner Meinung nach so aussehen



1

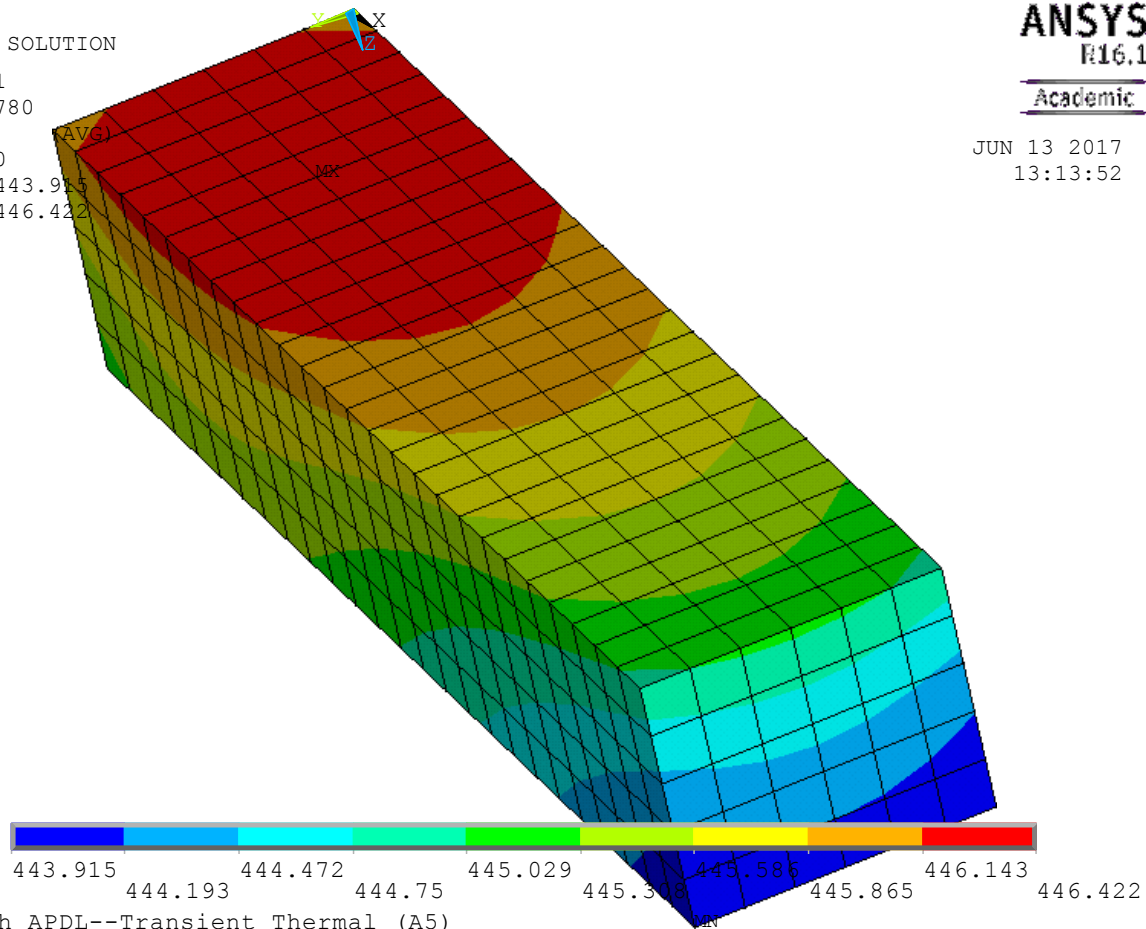
NODAL SOLUTION

SUB =1
TIME=780
TEMP
RSYS=0
SMN =443.915
SMX =446.422

ANSYS
R16.1

Academic

JUN 13 2017
13:13:52



Versuch_APDL--Transient Thermal (A5)