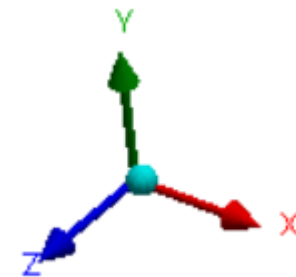
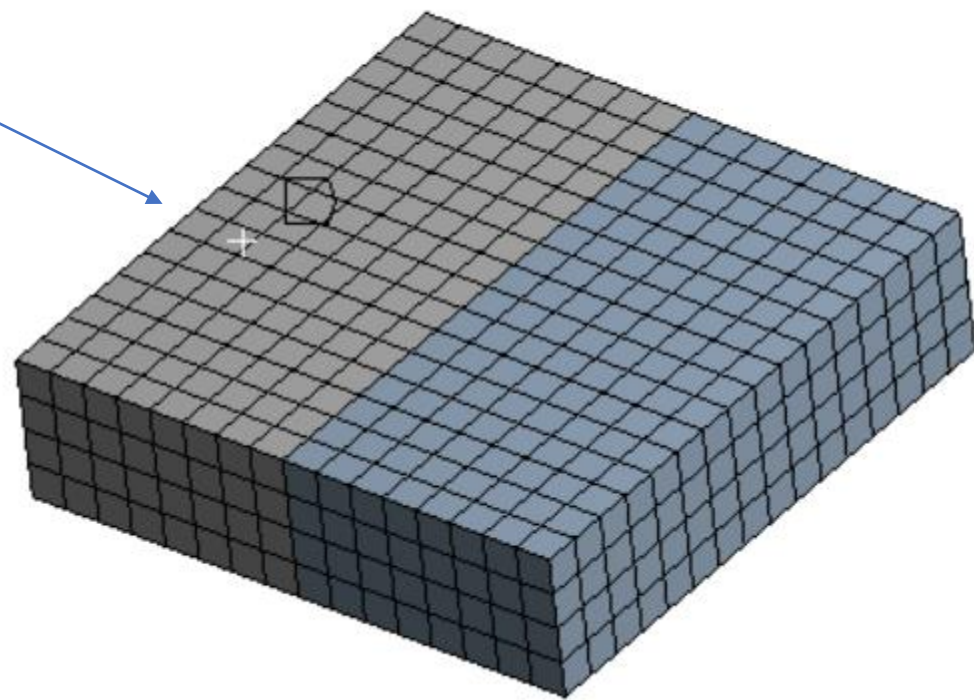
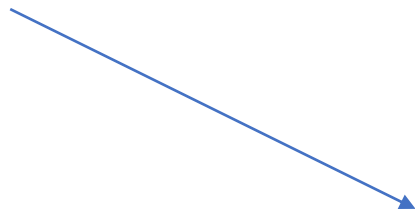


FixedSupport



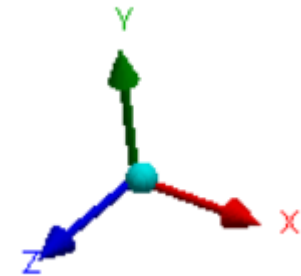
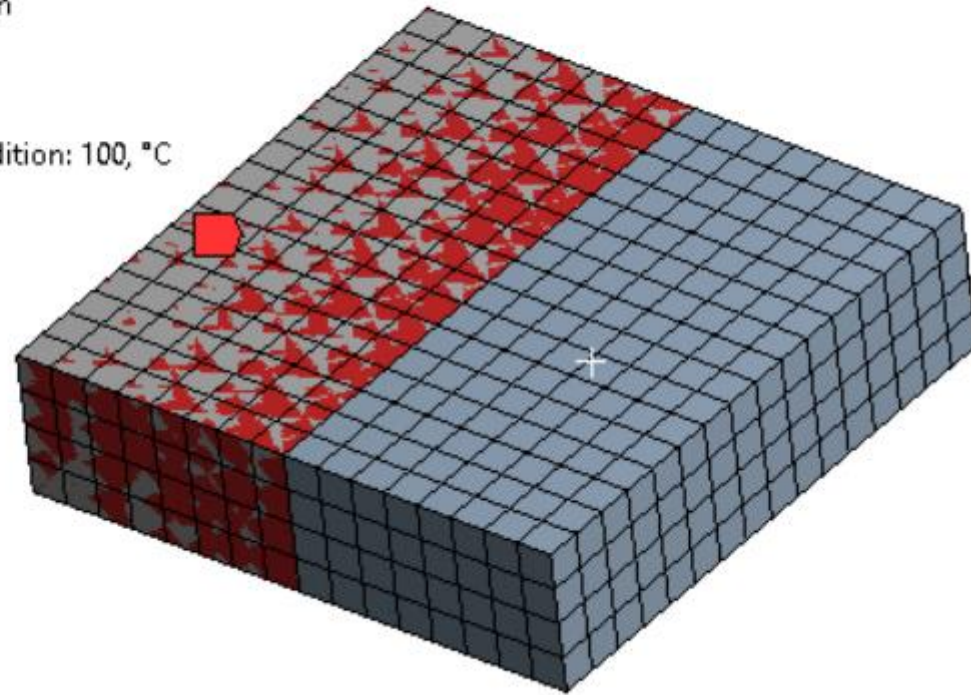
**A: Static Structural**

Thermal Condition

Time: 1, s

19.10.2020 08:04

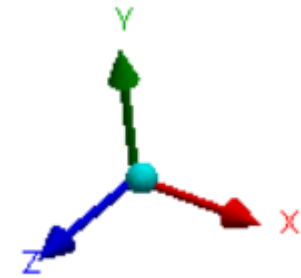
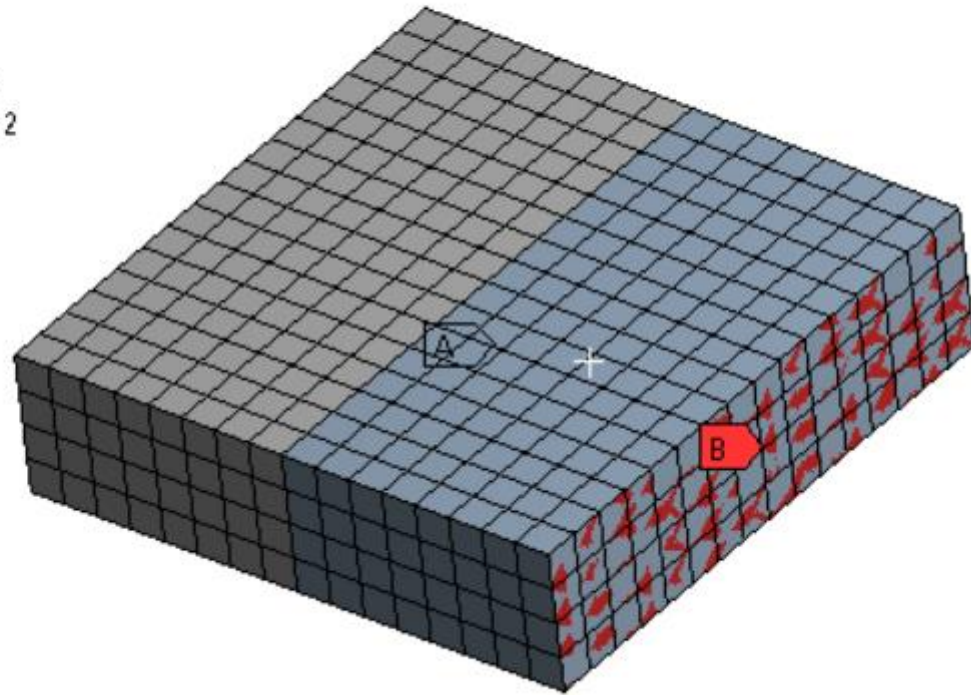
■ Thermal Condition: 100, °C



### Remote Points

19.10.2020 08:04

- A** Remote Point
- B** Remote Point 2

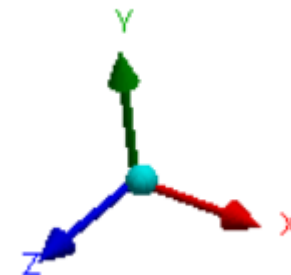
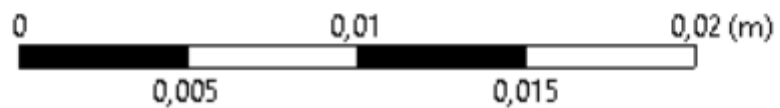
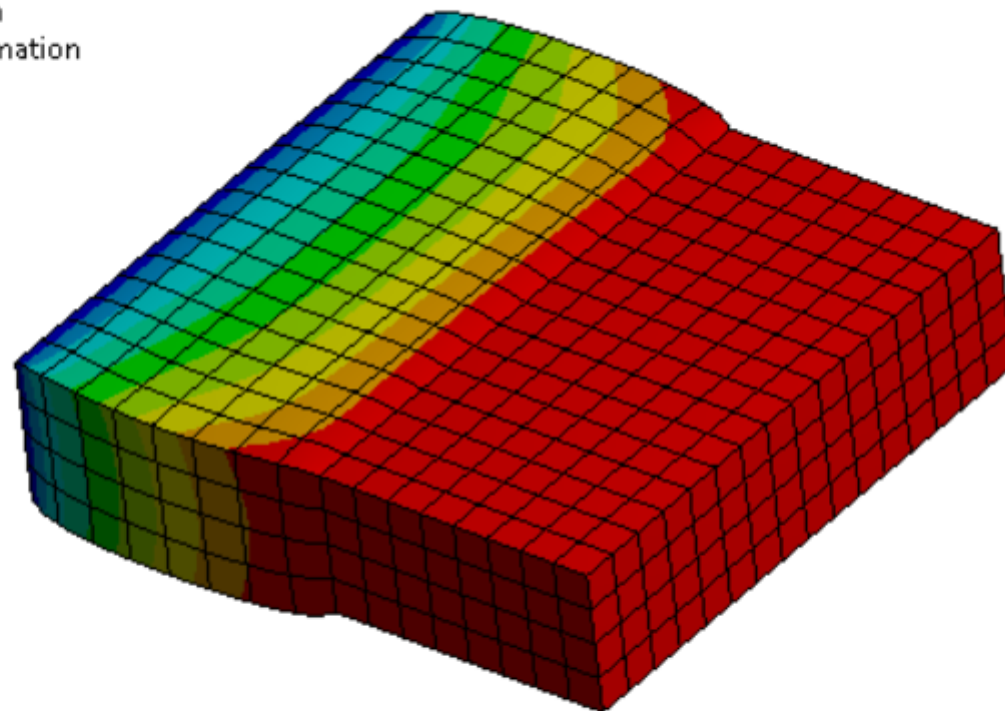
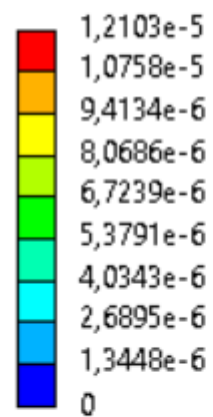


$$0 = 1 (1/m) * \text{Remote Point}(X \text{ Displacement}) + -1 (1/m) * \text{Remote Point 2}(X \text{ Displacement})$$

	Coefficient	Units	Remote Point	DOF Selection	
	1	1/m	Remote Point	X Displacement	
	-1	1/m	Remote Point 2	X Displacement	

**A: Static Structural**

Total Deformation  
Type: Total Deformation  
Unit: m  
Time: 1  
Max: 1,2103e-5  
Min: 0  
19.10.2020 08:18



**A: Static Structural**  
Total Deformation 2  
Type: Total Deformation  
Unit: m  
Time: 1  
Max: 1,1572e-5  
Min: 1,1572e-5  
19.10.2020 08:18

