

Abbildung 1: Modell des Behälters

G: 10,5 mbar - besseres Netz  
Static Structural  
Time: 1, s  
27.02.2020 13:32

- A Fixed Support
- B Pressure: 1,05e-003 MPa
- C Frictionless Support

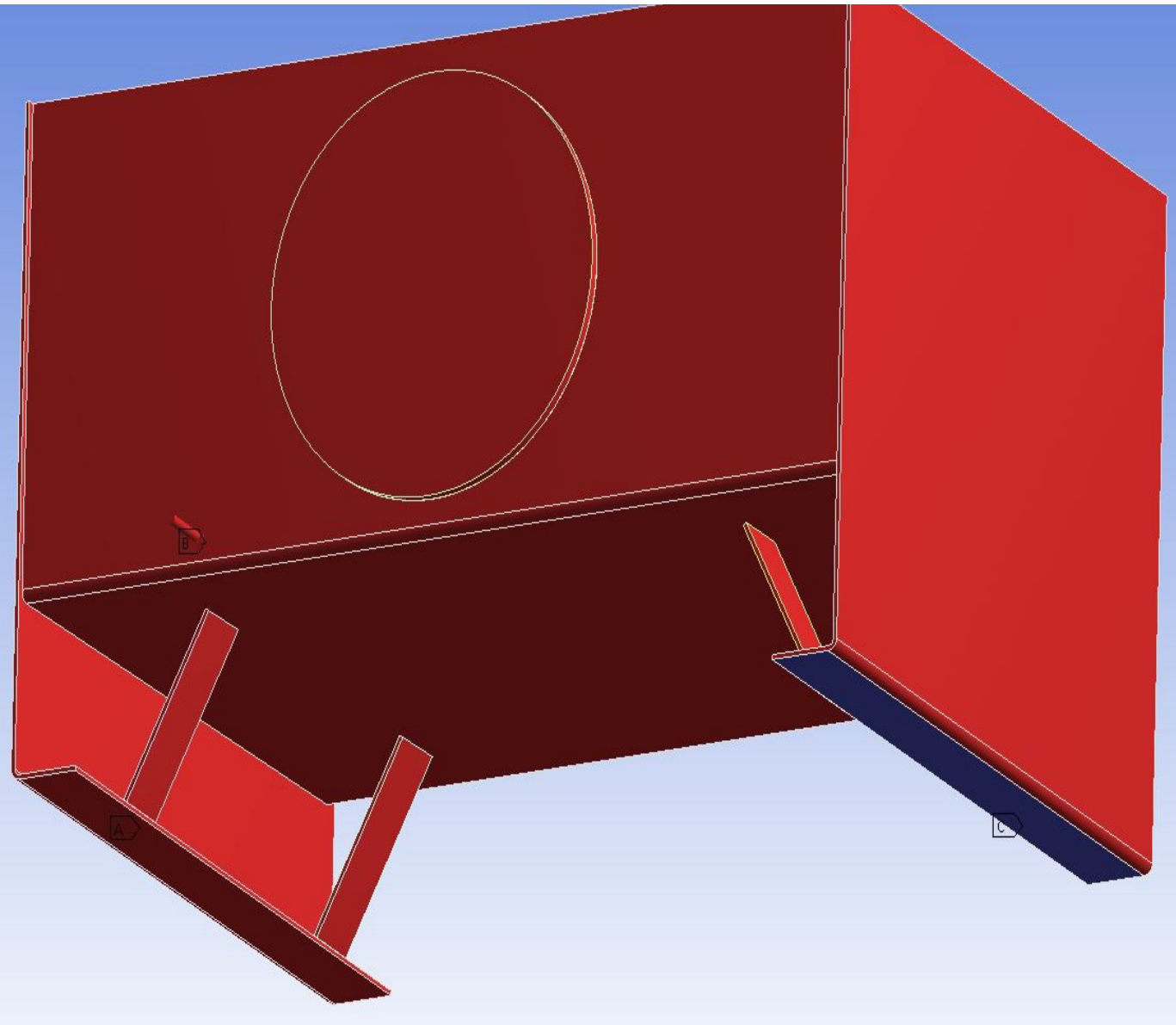


Abbildung 2: äußerer Druck und Lagerungen

Details of "Analysis Settings"	
<b>Restart Analysis</b>	
Restart Type	Program Controlled
Status	Done
<b>Step Controls</b>	
Number Of Steps	1,
Current Step Number	1,
Step End Time	1, s
Auto Time Stepping	Program Controlled
<b>Solver Controls</b>	
Solver Type	Program Controlled
Weak Springs	On
Spring Stiffness	Program Controlled
Solver Pivot Checking	Program Controlled
Large Deflection	Off
Inertia Relief	Off
<b>Restart Controls</b>	
<b>Nonlinear Controls</b>	
<b>Output Controls</b>	
<b>Analysis Data Management</b>	
<b>Visibility</b>	

Abbildung 3: Analysis Settings lineare Analyse

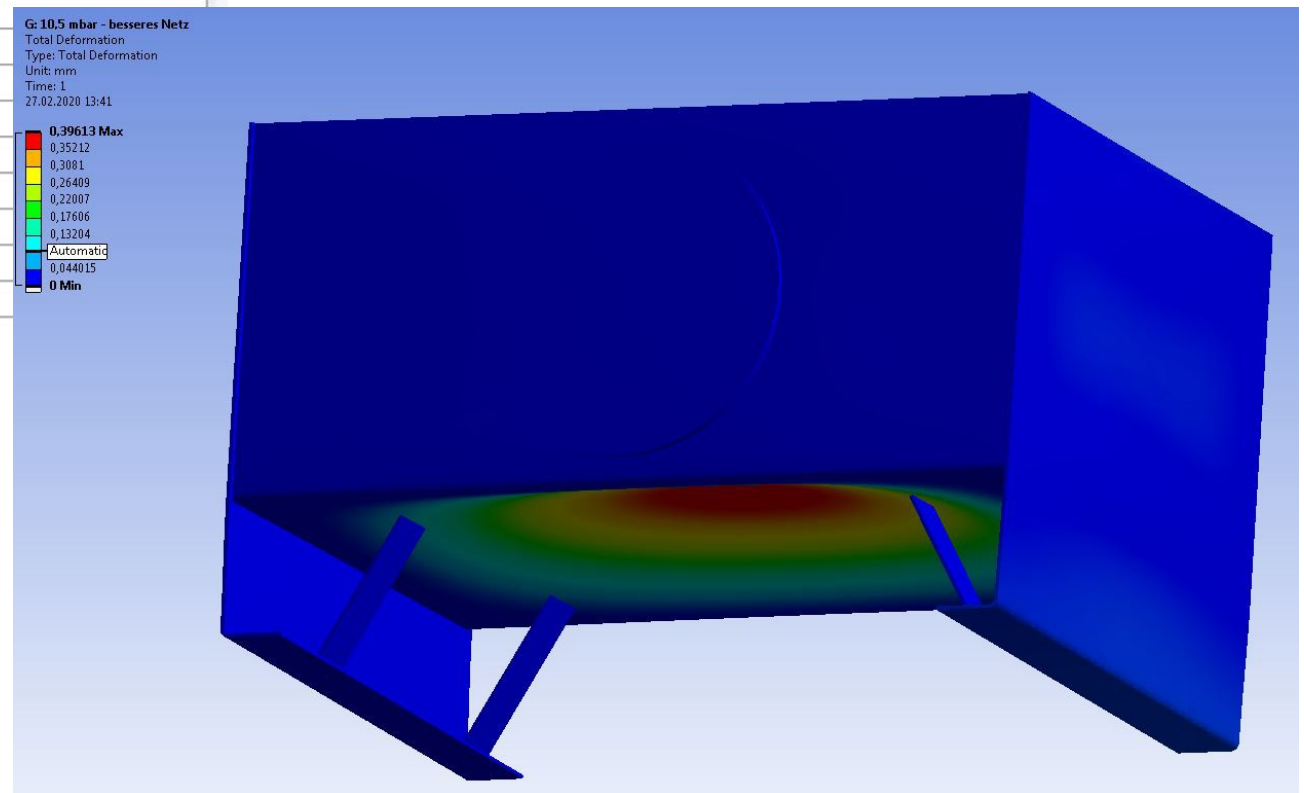


Abbildung 4: Total Deformation

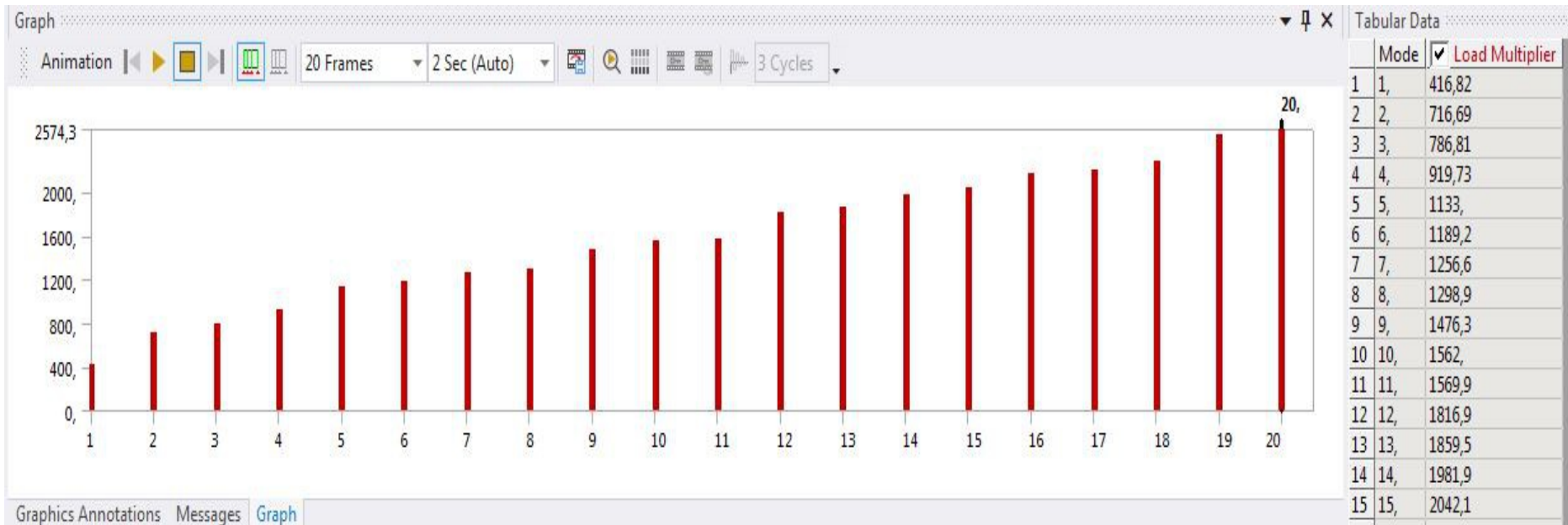
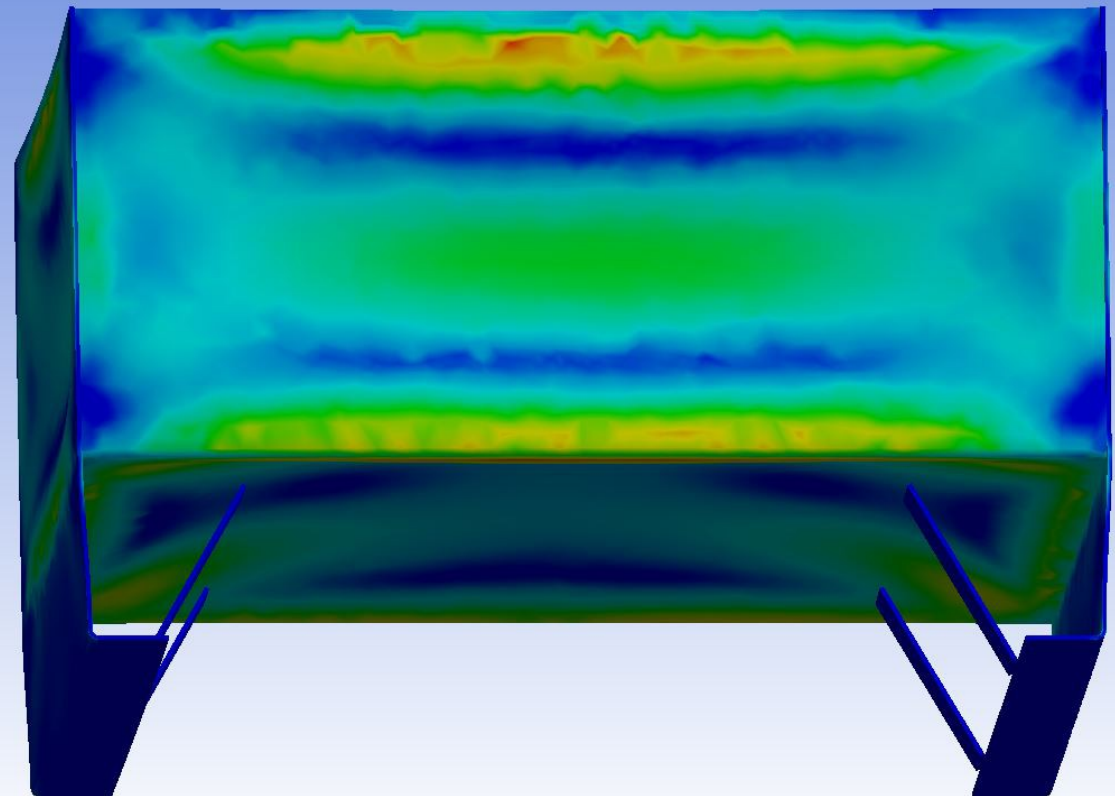
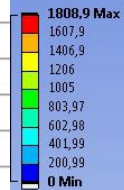


Abbildung 5: Load Multiplier

Details of "Analysis Settings" ▾ ↑ □ ×

[-] <b>Restart Analysis</b>	
Restart Type	Program Controlled
Status	Done
[-] <b>Step Controls</b>	
Number Of Steps	1,
Current Step Number	1,
Step End Time	1, s
Auto Time Stepping	On
Define By	Substeps
Initial Substeps	10,
Minimum Substeps	10,
Maximum Substeps	100,
[-] <b>Solver Controls</b>	
Solver Type	Program Controlled
Weak Springs	On
Spring Stiffness	Program Controlled
Solver Pivot Checking	Program Controlled
Large Deflection	On
Inertia Relief	Off
+ <b>Restart Controls</b>	
+ <b>Nonlinear Controls</b>	
+ <b>Output Controls</b>	
+ <b>Analysis Data Management</b>	
+ <b>Visibility</b>	

**E 10,5 mbar - besseres Netz - nichtlinear**  
 Equivalent Stress  
 Type: Equivalent (von-Mises) Stress  
 Unit: MPa  
 Time: 1  
 27.02.2020 14:18



0,00 150,00 300,00

Abbildung 6: Analysis Settings nichtlineare Analyse

Abbildung 7: Stress

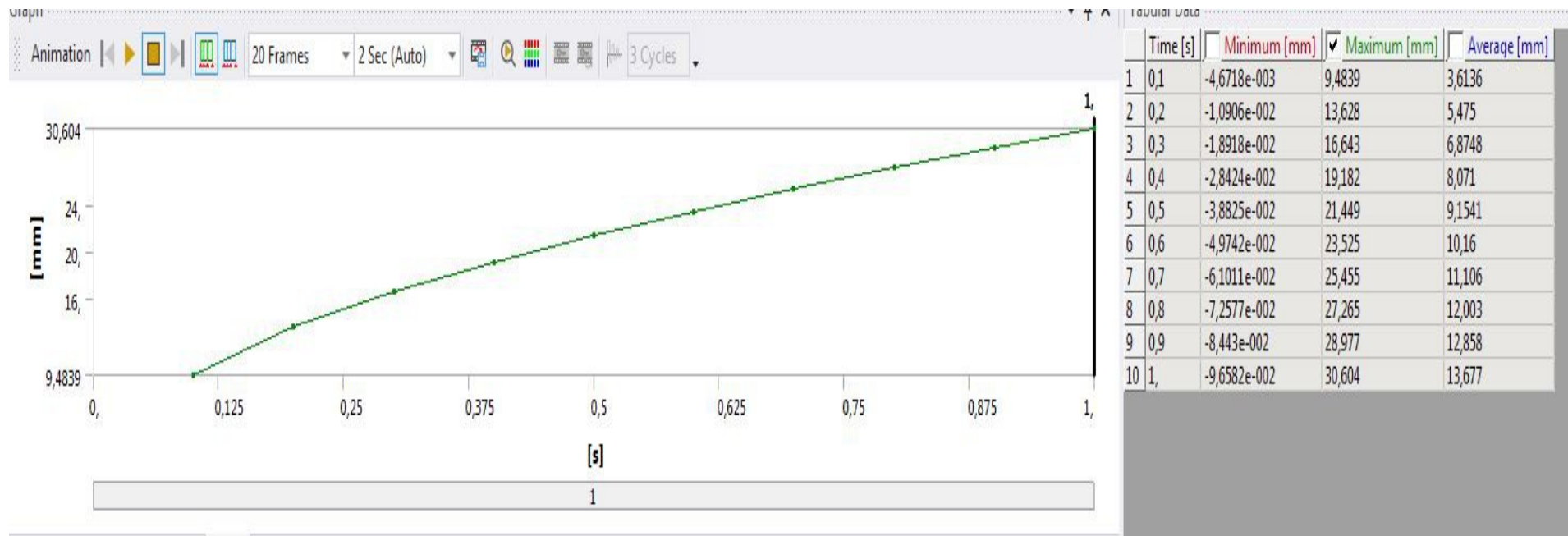


Abbildung 8: Verformungsverlauf Unterboden