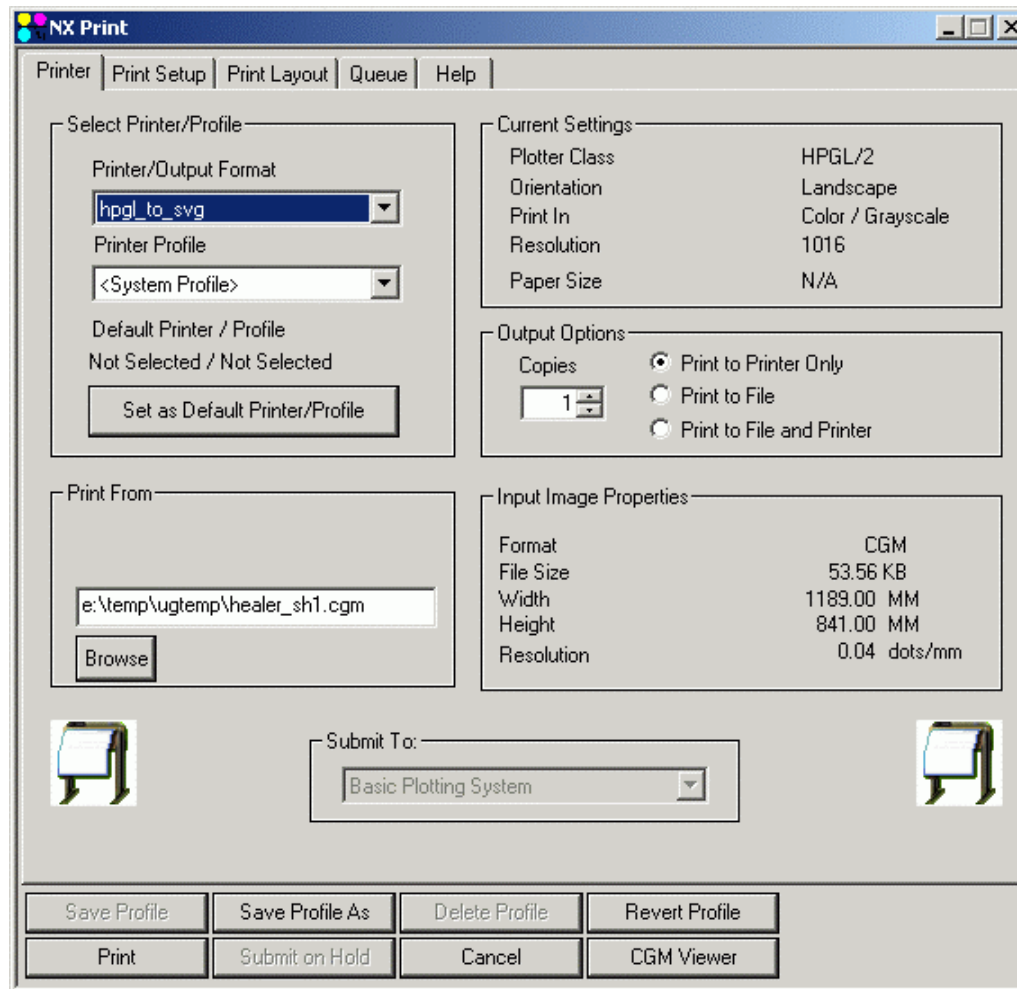


Nx3 – Plotting to svg

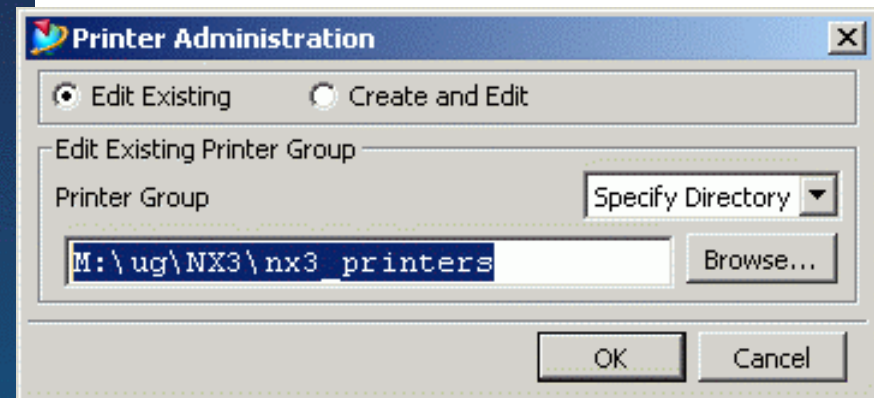
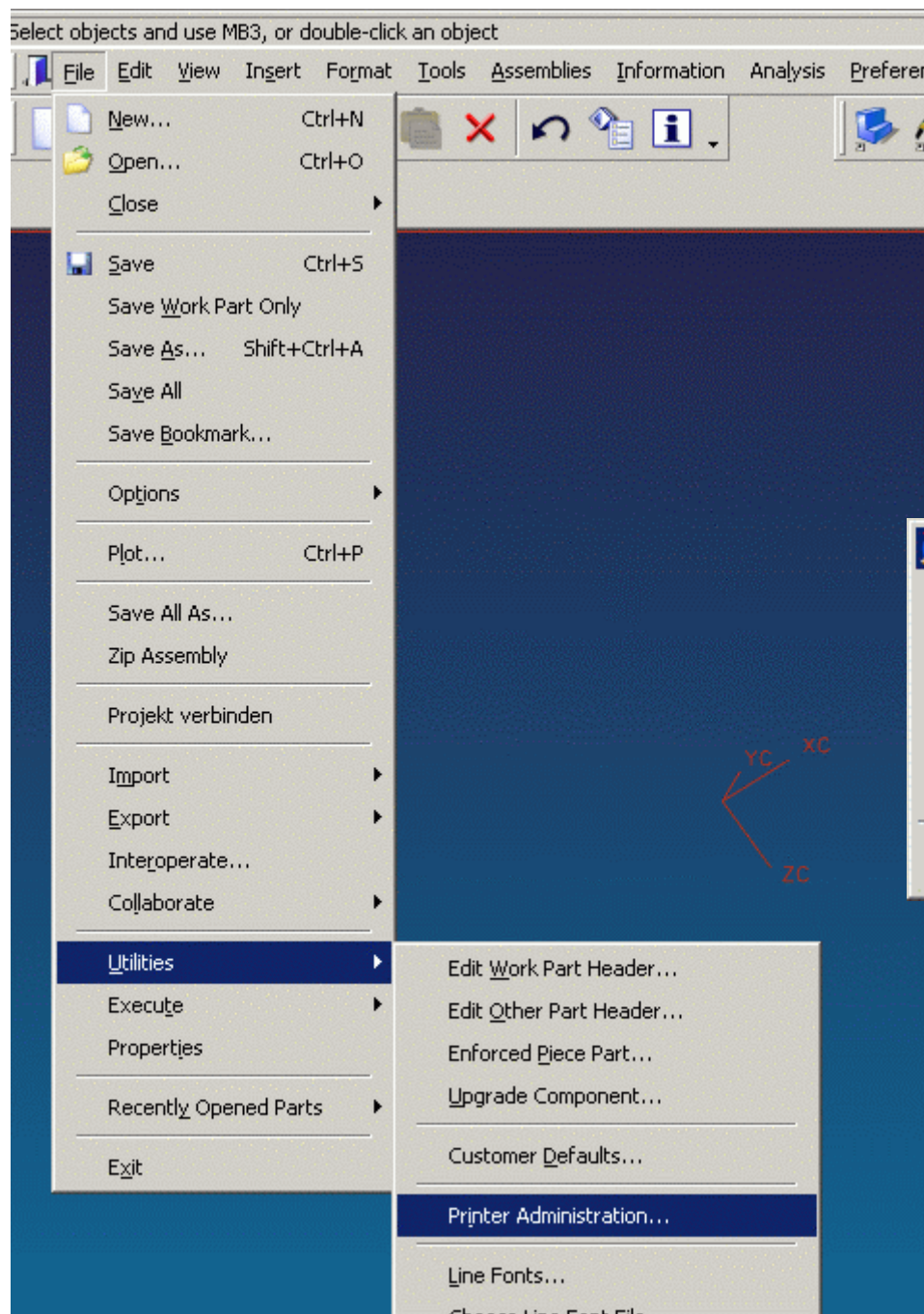


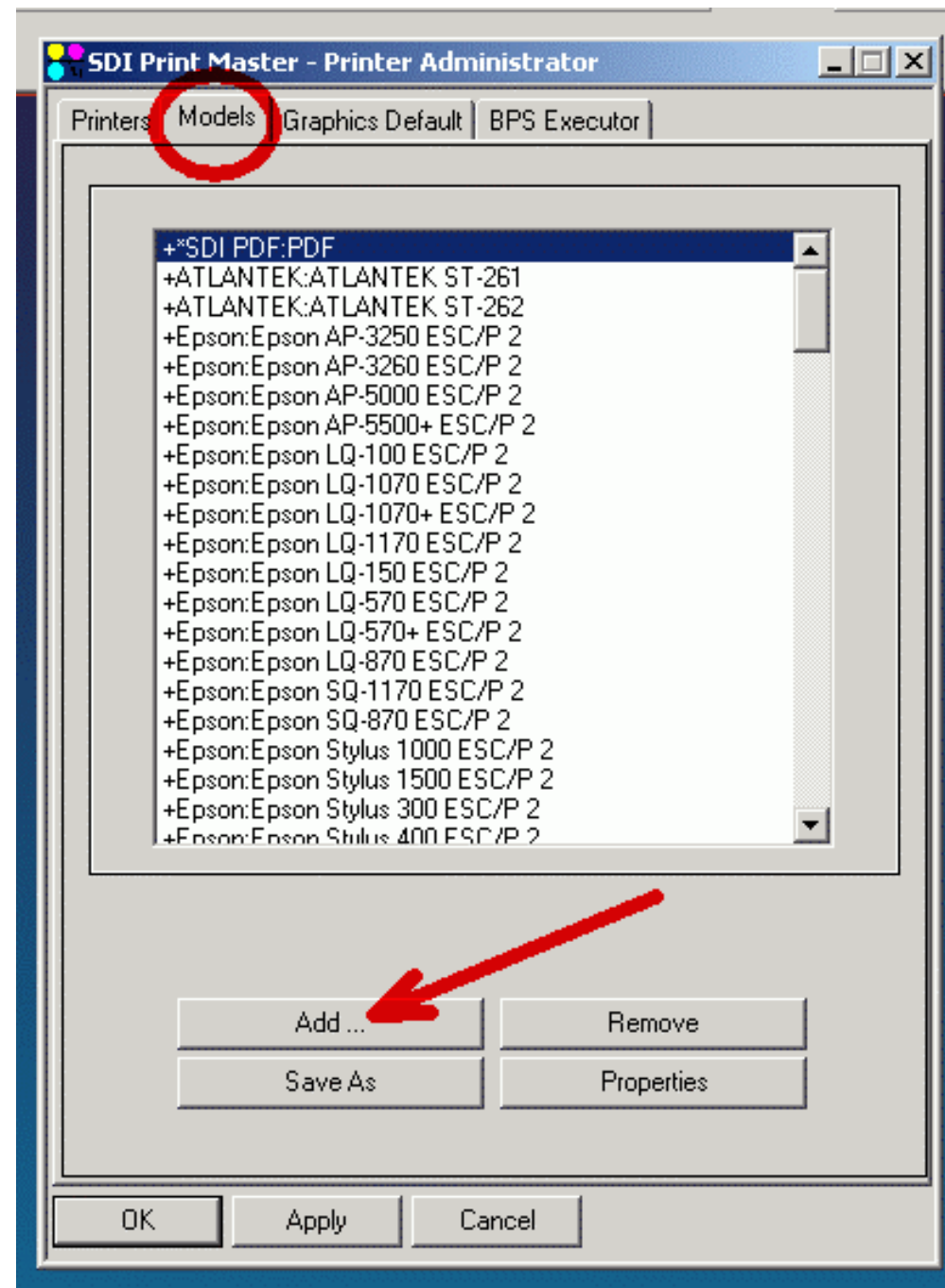
Batch plotting
with hp2xx

```
1 #
2 # Copyright (c) 1991-2002 Unigraphics Solutions, Incorporated
3 #                               Unpublished - All rights reserved
4 #
5 #####
6 #
7 #
8 # This file should not be modified. It will be overwritten as maintenance
9 # releases are installed. Any customizations should be made to the
10 # ugii_env.dat file which the maintenance releases will not modify. If
11 # a variable is listed in both this file, and ugii_env.dat, then the
12 # definition from ugii_env.dat will be used.
13 #
14 # UGII_SDI_CGM_HPGL_NO_PS=1
15 # Set this variable to cause the SDI printing software to suppress generating
16 # PS statements in HPGL2 output
17 #
18 # UGII_SDI_IGNORE_HPGL_OFFSET=1
19 # Set this variable to cause the SDI printing software to suppress the
20 # generation of registration marks at the corner of HPGL output. Note
21 # This variable should be used instead of UGII_IGNORE_OFFSET which it
22 # replaces.
23 #
24 # UGII_SDI_IGNORE_HPGL2_OFFSET=1
25 # Set this variable to cause the SDI printing software to suppress the
26 # generation of registration marks at the corner of HPGL-2 output.
27 #
28 # UGII_SDI_IGNORE_SIZE_WARNING=1
29 # Set this variable to cause the SDI printing software to suppress the
30 # message box that the Image exceeds the printable page size.
```

Remove # in the
ugii_env_ug.dat before
this entry







SDI Print Master - Printer Administrator

Properties - Printer Model

Model Name:

Color

☐ Color

☐ Monochrome

☒ Both

Color Passes:

Feed Type

☒ Roll

☐ Sheet

☐ Both

Class

Resolutions

Add

Remove

Paper Size

Add Paper Size

Delete Paper Size

Edit Paper Size

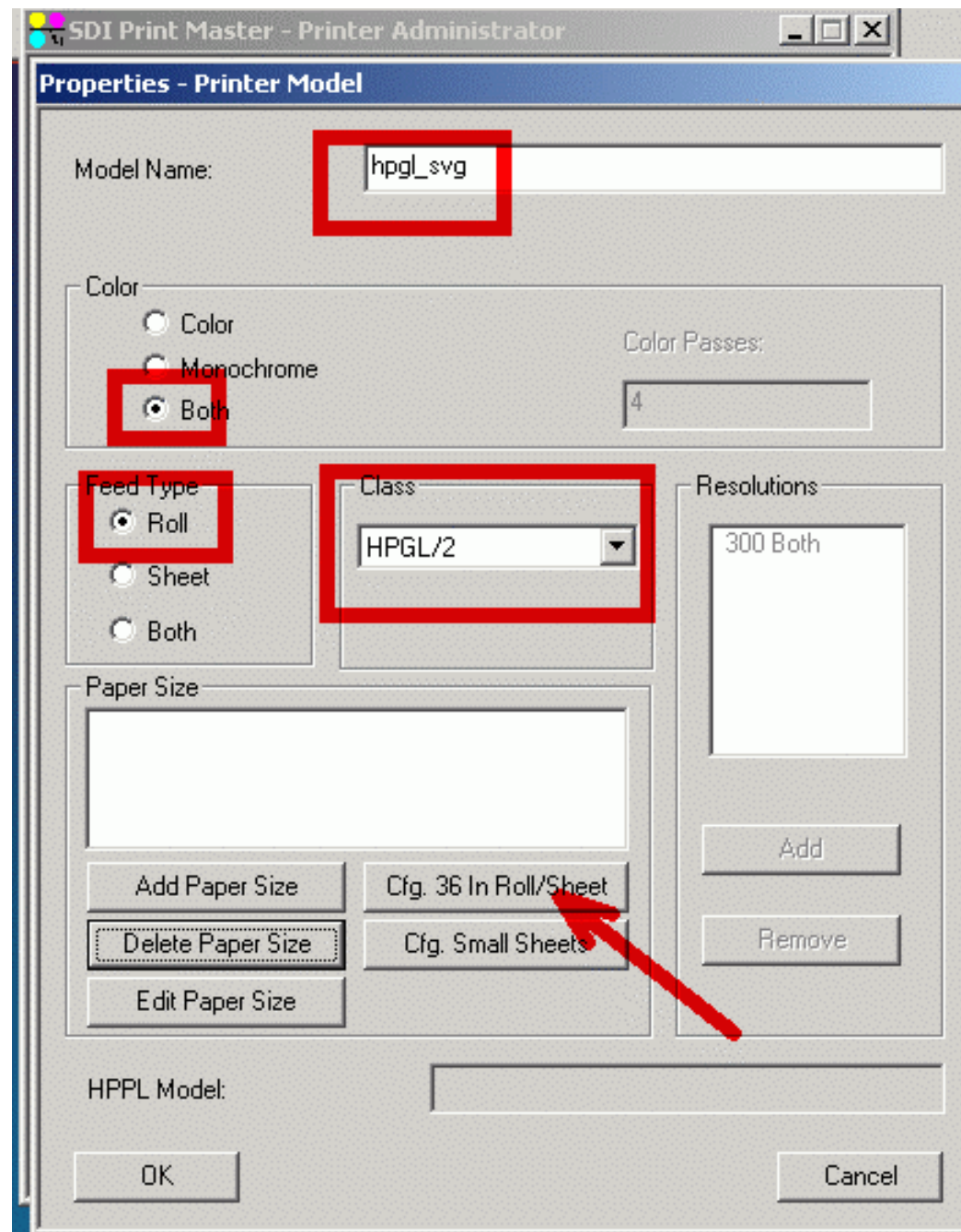
Cfg. 36 In Roll/Sheet

Cfg. Small Sheets

HPPL Model:

OK

Cancel



SDI Print Master - Printer Administrator

Properties - Printer Model

Model Name:

Color

☐ Color
☐ Monochrome
☒ Both

Color Passes:

Feed Type

☒ Roll
☐ Sheet
☐ Both

Class

Resolutions

Paper Size

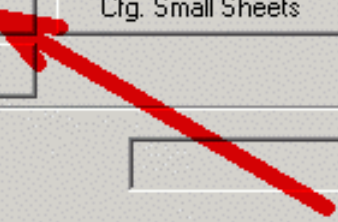
Add Paper Size
Delete Paper Size
Edit Paper Size

Cfg. 36 In Roll/Sheet
Cfg. Small Sheets

Add
Remove

HPPL Model:

OK Cancel



SDI Print Master - Printer Administrator

Properties - Printer Model

Model Name:

Color

☐ Color
☐ Monochrome
☒ Both

Color Passes:

Feed Type

☒ Roll
☐ Sheet
☐ Both

Class

Resolutions

Paper Size

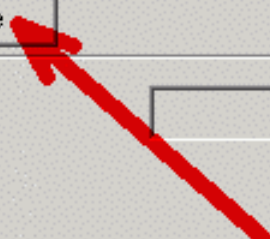
Add Paper Size Cfg. 36 In Roll/Sheet

Delete Paper Size Cfg. Small Sheets

Edit Paper Size

HPPL Model:

OK Cancel



Paper Size Properties ✕

Select Sheet/Roll Size 36 in Roll ▾

Width:

Height:

Printable Width:

Printable Height:

Units

☒ Inches

☐ MM

Initialization File

Paper Size Properties [X]

Select Sheet/Roll Size: 36 in Roll

Width:

Height:

Printable Width:

Printable Height:

Units:

☒ Inches

☐ MM

A5 - 210.0 x 297.0 MM
A6 - 105.0 x 148.5 MM
C - 17.0 x 22 in
D - 22.0 x 34.0 in
E - 34.0 x 44.0 in
60 in Roll
54 in Roll
50 in Roll
42 in Roll
36 in Roll
24 in Roll
18 in Roll
12 in Roll
9 in Roll
Sheet Size Custom
Roll Size Custom

Browse

OK Cancel

SDI Print Master - Printer Administrator

Properties - Printer Model

Model Name:

Paper Size Properties

Select Sheet/Roll Size:

Width:

Height:

Printable Width:

Printable Height:

Units

☐ Inches

☒ MM

Initialization File

Browse

OK Cancel

Edit Paper Size

HPPL Model:

OK Cancel

Properties - Printer Model

Model Name:

Color

☐ Color

☐ Monochrome

☒ Both

Color Passes:

Feed Type

☒ Roll

☐ Sheet

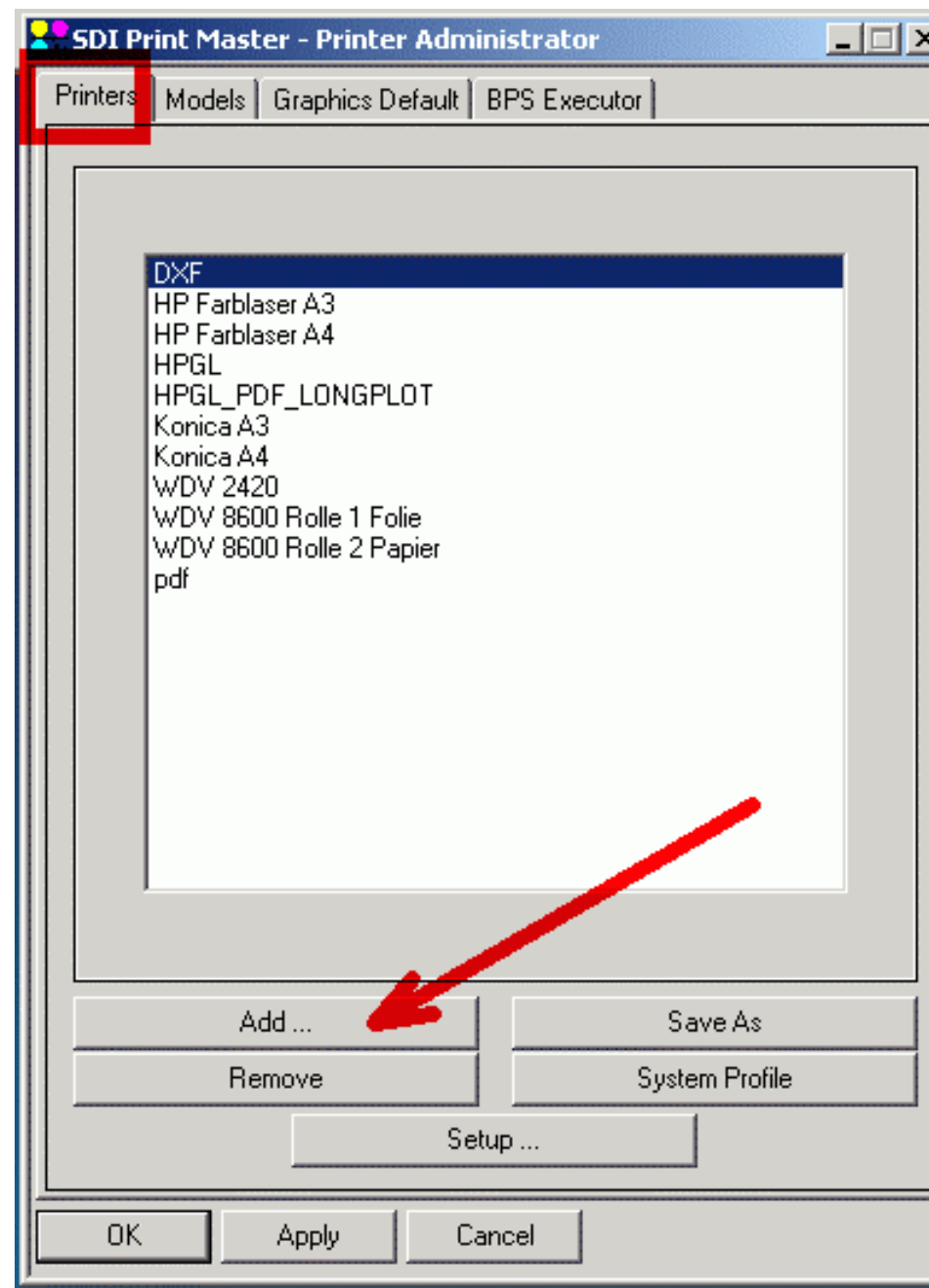
☐ Both

Class

Resolutions

Paper Size

HPPL Model:



Printer Setup

Printer Name:

hpgl_to_svg

Printer Model:

+*SDI PDF:PDF

Printer:

☒ NT/Queue

☐ LP/Queue

☐ LPR/Queue

☐ Device

☐ Render File then Execute Program

☐ Execute Program on Input File

HP CLJ 8500_A4
HPGL_DATEI
Konica_A3
Konica_A4
WDV_2420
hpg_dxf
hpg_pdf
pdf
wdv8600 Rolle 2
wdv8600 Rolle1
hpgl_svg

Initialization File:

Browse

Reset File:

Browse

Pen Setup

Advanced Options ...

OK

Cancel

Printer Setup

Printer Name:

hpgl_to_svg

Printer Model:

hpgl_svg

Printer:

☐ NT/Queue

☐ LP/Queue

☐ LPR/Queue

☐ Device

☒ Render File then Execute Program

☐ Execute Program on Input File

Local:

\\wintdm\8600 TIFF Papier R2

Full Executable Path and arguments:

M:\ug\NX3\gs\vxplot_hpxxtosvg.bat

Initialization File:

Browse

Reset File:

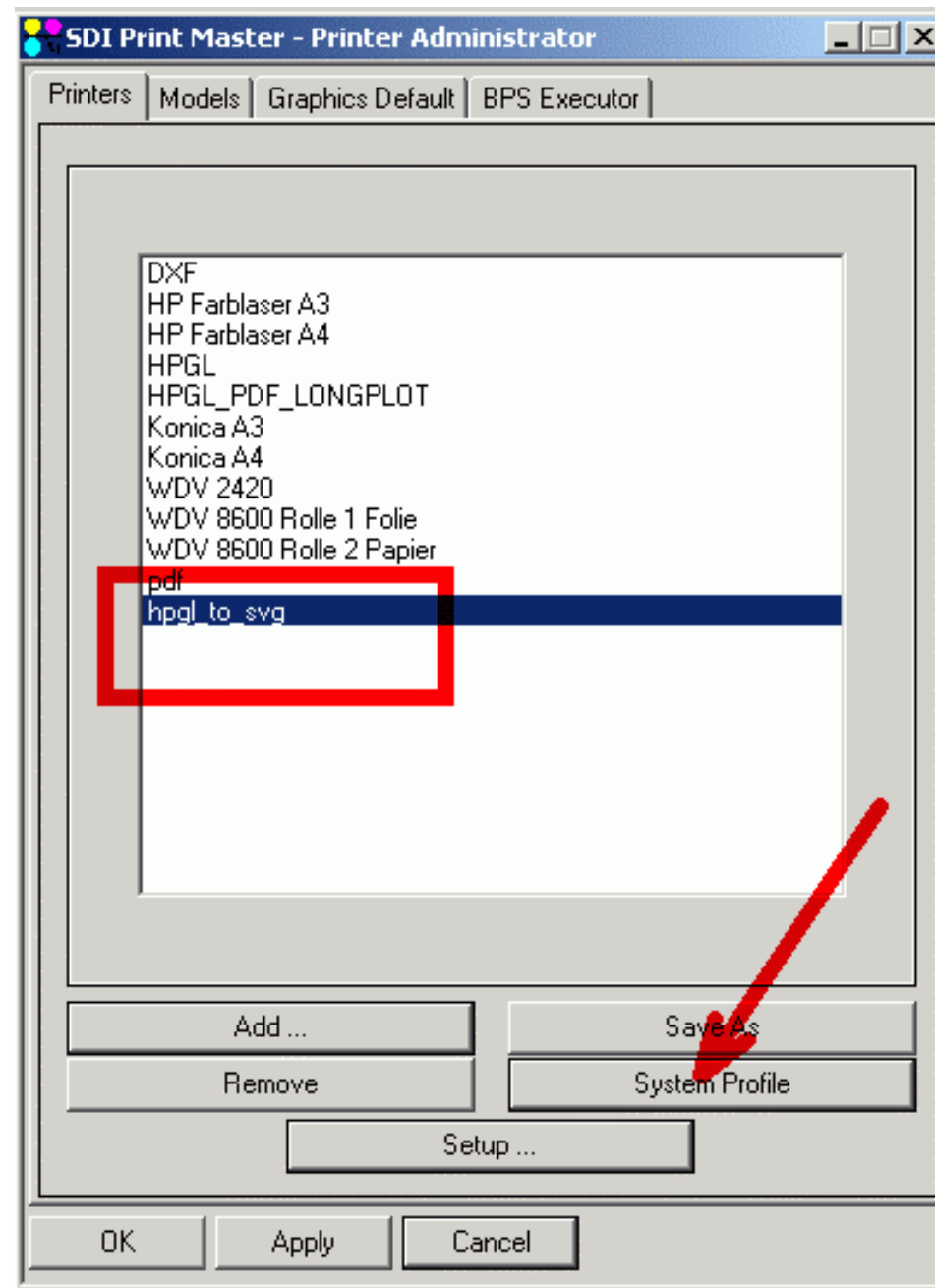
Browse

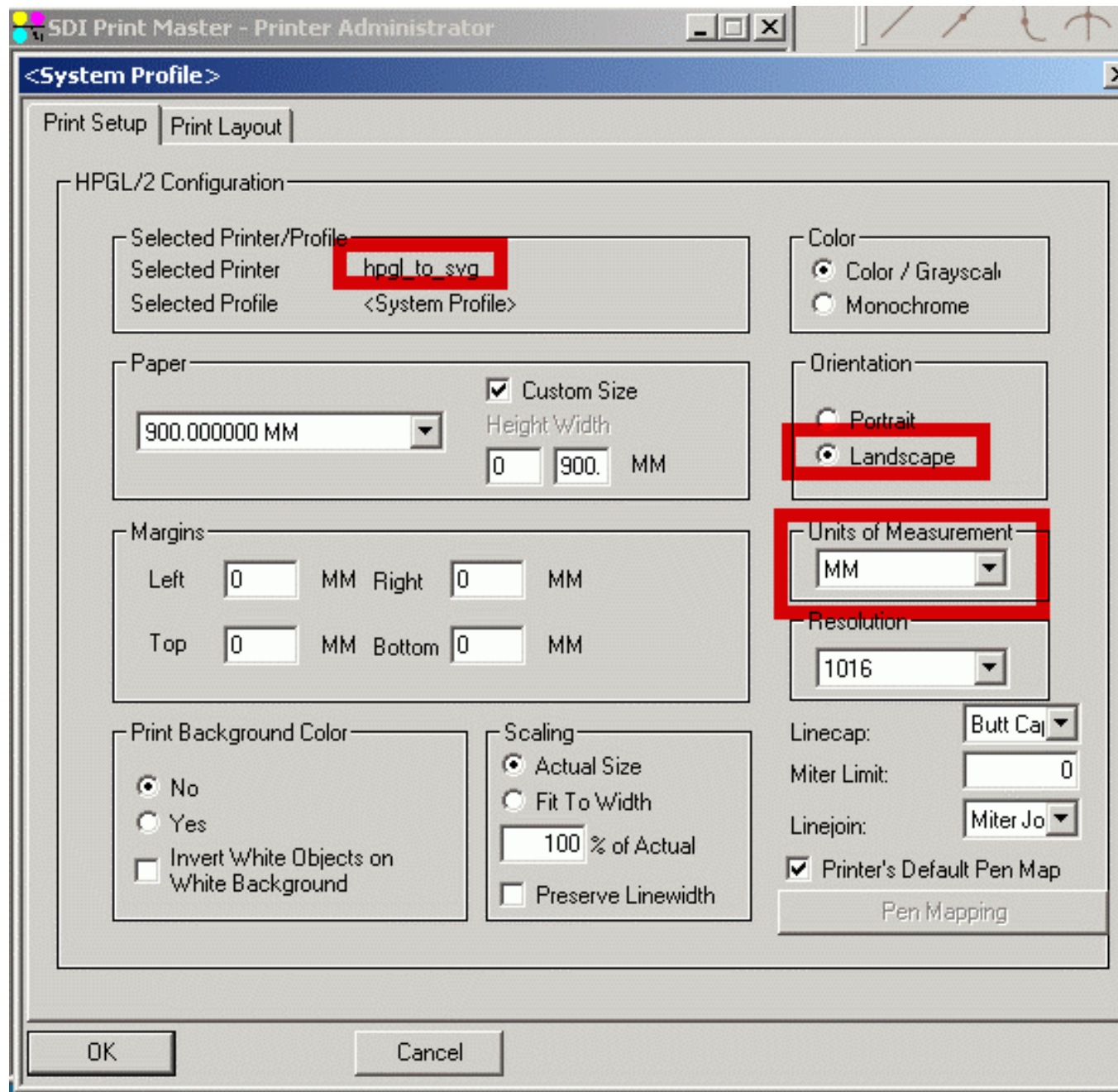
Pen Setup

Advanced Options ...

OK

Cancel





NX Print

Printer | Print Setup | Print Layout | Queue | Help

Select Printer/Profile

Printer/Output Format
hpgl_to_svg

Printer Profile
<System Profile>

Default Printer / Profile
Not Selected / Not Selected

Set as Default Printer/Profile

Current Settings

Plotter Class	HPGL/2
Orientation	Landscape
Print In	Color / Grayscale
Resolution	1016
Paper Size	N/A

Output Options

Copies ☒ Print to Printer Only
☐ Print to File
☐ Print to File and Printer

1

Print From

e:\temp\ugtemp\healer_sh1.cgm

Browse

Input Image Properties

Format	CGM
File Size	53.56 KB
Width	1189.00 MM
Height	841.00 MM
Resolution	0.04 dots/mm

Submit To:

Basic Plotting System

Save Profile

Save Profile As

Delete Profile

Revert Profile

Print

Submit on Hold

Cancel

CGM Viewer

The hp2xx batch

```
@echo off
rem start pfad /path zu/to/ hp2xx
@set base=M:\ug\NX3\gs
@set HPXX_DLL=%base%\hp2xx\bin
rem end pfad /path zu/to/ hp2xx
rem path / extension
@set path=%HPXX_DLL%;%path%
rem the command line
@%HPXX_DLL%\hp2xx.exe -m svg %1
rem copy to stanard folder
@copy *.svg q:\ps
rem open explorer on standard folder
@explorer q:\ps
@exit
```

Hp2xx can be found

<http://gnuwin32.sourceforge.net/packages/hp2xx.htm>