

90[*]-A

PCB female receptacle - right angle
Universal Serial Bus Type A

*Receptacle; Options are:

D = Dual port

S = Single port

FEATURES:

- Stacked design saves PCB real estate
- Metal shell provides RFI/EMI protection
- Staked housing provides excellent solder tail alignment facilitating PCB mounting
- Dual side cantilever beams for grounding and EMI/RFI shielding

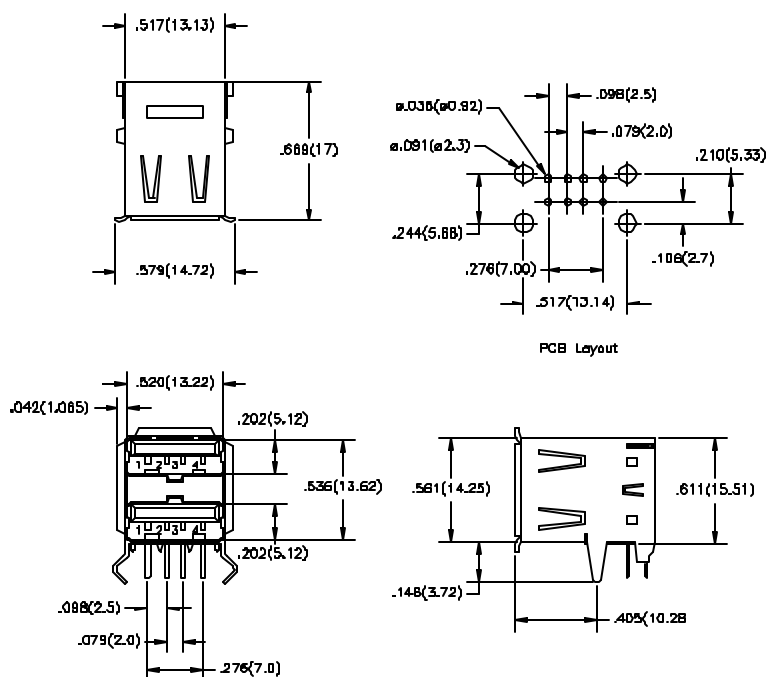
ELECTRICAL:

- Current rating: 0.5 AMP
- Contact Resistance: 30m Ohm maximum at 1 AMP
- Insulation resistance: 1000 M Ohm at 500V DC
- Operating temperature: -55°C to +85°C
- Dielectric withstanding voltage: 750 VAC at sea level

MATERIAL:

- Contact: Phosphor bronze
- Insulator: LCP UL94V-0
- Solderails: Tin lead plated
- Shell: Tin plated over nickel underplate

90D-A Dual port



90S-A Single port

