

Reference Topics > What's New in Creo Elements/Direct Annotation

What's New in Creo Elements/Direct Annotation

All Over and All Around Modifiers

Annotation drawings support all over and all around modifiers for geometrical tolerancing.

User Interface Location:

- Click **Annotation** > **Ref Line**, or
- Click **Annotation** > **Properties** > **Reference Line**.

Release: Creo Elements/Direct Modeling 20.3.0.0.

Watch a video that demonstrates this enhancement:

[All over and all round modifiers](#)

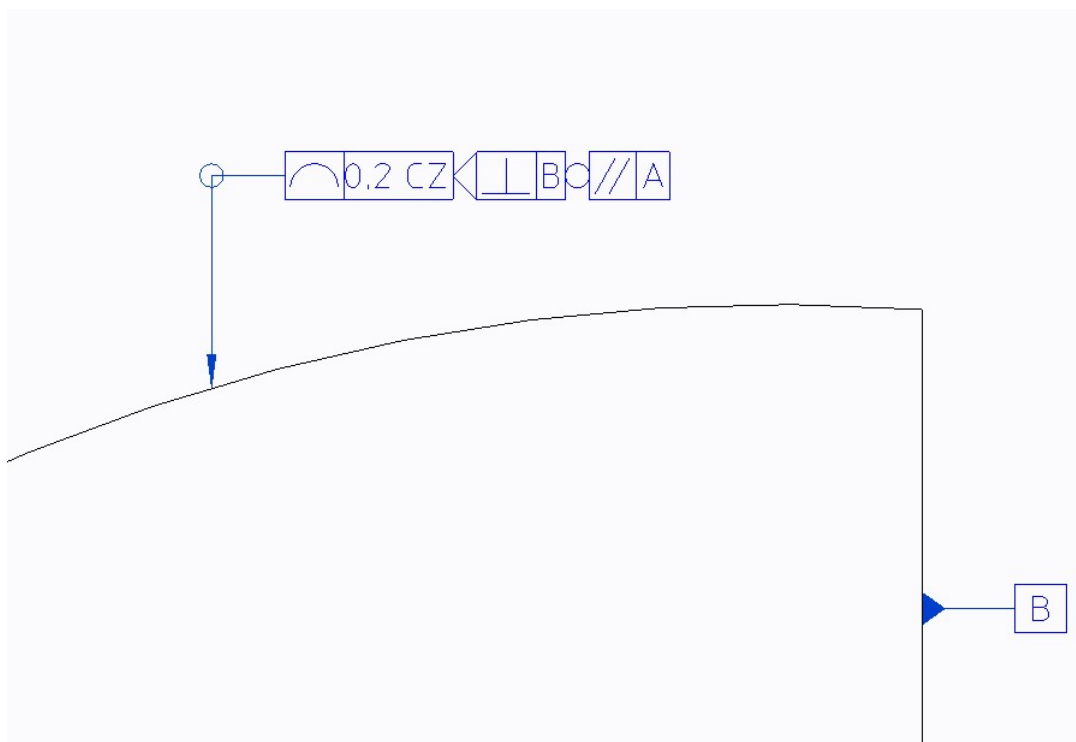
What is the benefit of this enhancement?

Annotation drawings support all over and all around modifiers for geometrical tolerancing according to ISO 1101-2017 and ASME Y14.5-2009.

During creation or modification of a reference line, you can control whether an all around or all over symbol is placed on the first elbow of the reference line. In addition to the previously-available indications for weld symbols, this allows you to easily apply those modifiers for reference lines of geometric tolerances or of other drawing indications. Upon modifications to the reference line position, the all around or all over symbol associatively follows the positional change.

This enables users to create production drawings according to more-recent industry standards.

All around drawing indication



Additional Information

Tips:	None.
Limitations:	No known limitations.
Does this replace existing functionality?	No.
Configuration options associated with this functionality:	None.

Indicators for Dimensional Tolerancing

Annotation drawings support indicators for dimensional tolerancing.

User Interface Location: Click **Annotation** > **Properties** > **Dimension**.

Release: Creo Elements/Direct Modeling 20.3.0.0.

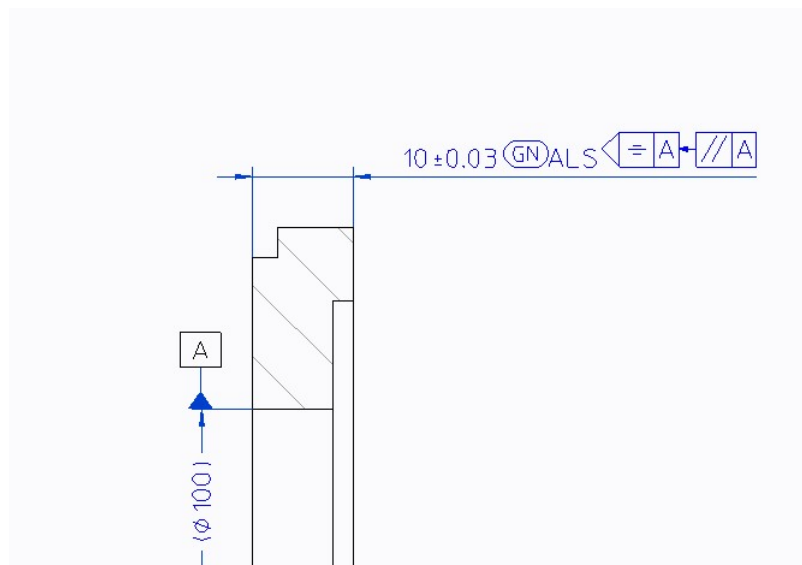
Watch a video that demonstrates this enhancement:

[Indicators for dimensional tolerancing](#)

What is the benefit of this enhancement?

Annotation drawings support indicators for dimensional tolerancing according to ISO 14405:2016. You can add up to two indicators to a dimension per tolerance value. Indicators are automatically added to the first, second, or first and second rows of the dimensions postfix text. This enables you to create production drawings according to more-recent industry standards.

Dimension and dimension tolerances with intersection plane and direction indicators



Additional Information

Tips:	None.
Limitations:	No known limitations.
Does this replace existing functionality?	No.
Configuration options associated with this functionality:	None.

Lock Views

You can lock or unlock views in Annotation.

User Interface Location: Click **Annotation** > **Lock Views**.

Release: Creo Elements/Direct Modeling 20.3.0.0.

What is the benefit of this enhancement?

You can lock drawing views in Annotation to prevent inadvertent modifications of their position while you work on a drawing.

A new **Lock Views** toggle button provides quick access to lock drawing view position or unlock them when they are locked. Locking a view represents a session-based, temporary status change and is not stored in the drawing itself. By default, views are unlocked. You can configure the default behavior.

When you create a new drawing or drawing views, the new views can be positioned even if views are locked.

This enhancement improves usability by preventing annoying, accidental movement of views.

Additional Information

Tips:	None.
Limitations:	No known limitations.
Does this replace existing functionality?	No.

Configuration options associated with this functionality:



Click **File > Settings > Default Settings**. In the **Default Settings** dialog box, expand **Annotation** and **View**. Set the default value for **Lock Views** to either **On** or **Off**.