

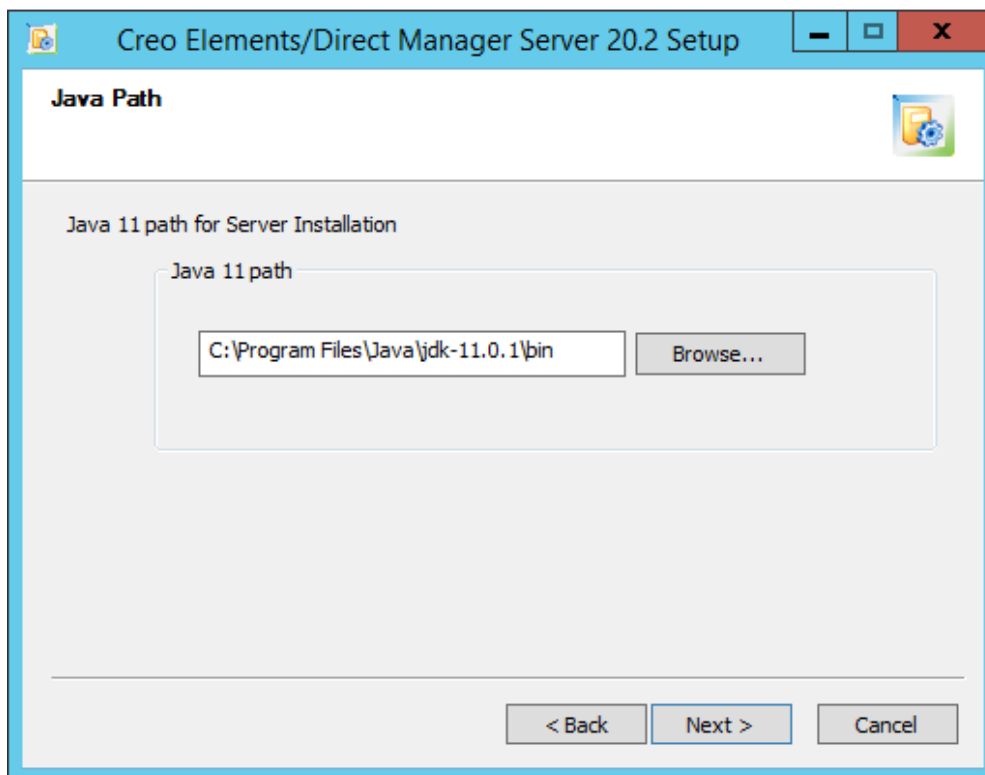
Fixes and Enhancements Creo Elements/Direct® Model Manager and Drawing Manager 20.3

Please find below the list of fixes and enhancements - as of March 19th, 2020 - that have been implemented for Creo Elements/Direct Model Manager / Drawing Manager 20.3.

Java 11 Support with 20.2 onwards:

When you install Creo Elements/Direct Manager Server 20.2 / Creo Elements/Direct Model Manager 20.2 / Creo Elements/Direct Drawing Manager 20.2 or beyond, a **valid** version of Java 11 must be available on your computer. See this [link](#) for more information.

The Java 11 path that you specify during installation (server and client) **must include the bin folder**. For example, C:\Program Files\Java\jdk-11.0.1\bin.



Note: PTC uses Java 11.0.6 for development and testing.

Web Services Usage:

For correct operation of Web Services, you must add mmweb to the URL paths as shown in the following example:

Web Services

Endpoint	Information
Service Name: {http://systinet.com/wsdl/com/osm/webservices/server}OSMService Port Name: {http://systinet.com/wsdl/com/osm/webservices/server}OSMService	Address: http://vkam211:8580/mmweb/OSMService WSDL: http://vkam211:8580/mmweb/OSMService?wsdl Implementation class: com.osm.webservices.legacy.OSMService
Service Name: {http://systinet.com/xsd/SchemaTypes}FileService Port Name: {http://systinet.com/xsd/SchemaTypes}FileService	Address: http://vkam211:8580/mmweb/FileService WSDL: http://vkam211:8580/mmweb/FileService?wsdl Implementation class: com.osm.webservices.legacy.FileService
Service Name: {http://ws.osm.com}QueryService Port Name: {http://ws.osm.com}QueryService	Address: http://vkam211:8580/mmweb/QueryService WSDL: http://vkam211:8580/mmweb/QueryService?wsdl Implementation class: com.osm.ws.QueryService
Service Name: {http://ws.osm.com}UpdateService Port Name: {http://ws.osm.com}UpdateService	Address: http://vkam211:8580/mmweb/UpdateService WSDL: http://vkam211:8580/mmweb/UpdateService?wsdl Implementation class: com.osm.ws.UpdateService

ID	Description	Module	Release
8227716	Client window always screen size as soon as wmproperties.lst exists in Creo Elements/Direct Model Manager 20.2	Base Functionality - Model Manager	Model Manager - Drawing Manager 20.3.0.0
8244650	Java Services Manager does not start. File javaPathClient.txt that is referred in runsm.bat is missing in installation directory	Base Functionality - Model Manager	Model Manager - Drawing Manager 20.3.0.0
2814823	Configuring the ConsolidatedBomTableColumnModel section with clear tag causes WMException at Flattened BOM generating.	BOM Editor	Model Manager - Drawing Manager 20.3.0.0
8264741	De-installing Model Manager 20.1 (32bit) and installing Model Manager 20.2 (64bit) loses the connection	Installation - Model Manager	Model Manager - Drawing Manager 20.3.1.0
7956928	MM_64-bit_Model Manager window does not fit/maximize on laptop and 4k monitor.	Model Manager	Model Manager - Drawing Manager 20.3.1.0
7961424	The option to check / uncheck JAVA File Server in the installer should be greyed out, if there is only JAVA based FS.	Model Manager	Model Manager - Drawing Manager 20.3.0.0
7984584	Workflow symbols are shown in thin lines as compare to earlier release.	Model Manager	Model Manager - Drawing Manager 20.3.1.0
7984852	MM_20.2F000-Platform support page need to be updated.	Model Manager	Model Manager - Drawing Manager 20.3.1.0
8033672	Large number of “.hprof” files accumulated in the Model Manager log folder while loading	Model Manager	Model Manager - Drawing Manager

	large Model (6xBan.pkg)		20.3.1.0
8048726	Manager server Java services window does not open up from Start Menu.	Model Manager	Model Manager - Drawing Manager 20.3.0.0
8090634	User is unable to see icon symbol in web client.	Model Manager	Model Manager - Drawing Manager 20.3.0.0
8174678	One additional blank window open-up while assigning a part to Drawing in Drafting.	Model Manager	Model Manager - Drawing Manager 20.3.0.0
8717375	After stopping "java service" from windows task Manager, all MM java services should be stopped. Now all services are showing as Started.	Model Manager	Model Manager - Drawing Manager 20.3.0.0
9593991	Model Manager java selection window does not pick Java 11.* versions automatically.	Model Manager	Model Manager - Drawing Manager 20.3.0.0
9881768	Unable to see attribute folders in the "Assign Data Directory" window.	Model Manager	Model Manager - Drawing Manager 20.3.0.0
8419759	Assembly SD file child SYSID is not in sync from 20.2-F000 pb_pub output when compared with Modeling	Model Manager WBM Extraction	Model Manager - Drawing Manager 20.3.0.0
8341159	Model Manager 20.2 web client does not report icons correctly	Web Services	Model Manager - Drawing Manager 20.3.1.0
8825892	QueryService URL was changed in 20.1.1	Web Services	Model Manager - Drawing Manager 20.3.0.0
9600886	The Model Manager Java Services Manager is limited to 5 Jettyslaves - further services cannot be controlled through the Java Services Manager	Web Services	Model Manager - Drawing Manager 20.3.0.0
9899139	Opening page http://model manager server:8580/OSMService does not open	Web Services	Model Manager - Drawing Manager 20.3.0.0

©2020 PTC Inc. The information contained herein is provided for informational use and is subject to change without notice. The only warranties for PTC products and services are set forth in the express warranty statements accompanying such products and services and nothing herein should be construed as constituting an additional warranty. PTC shall not be liable for technical or editorial errors or omissions contained herein. Important Copyright, Trademark, Patent, and Licensing Information: See the About Box, or copyright notice, of your PTC software.