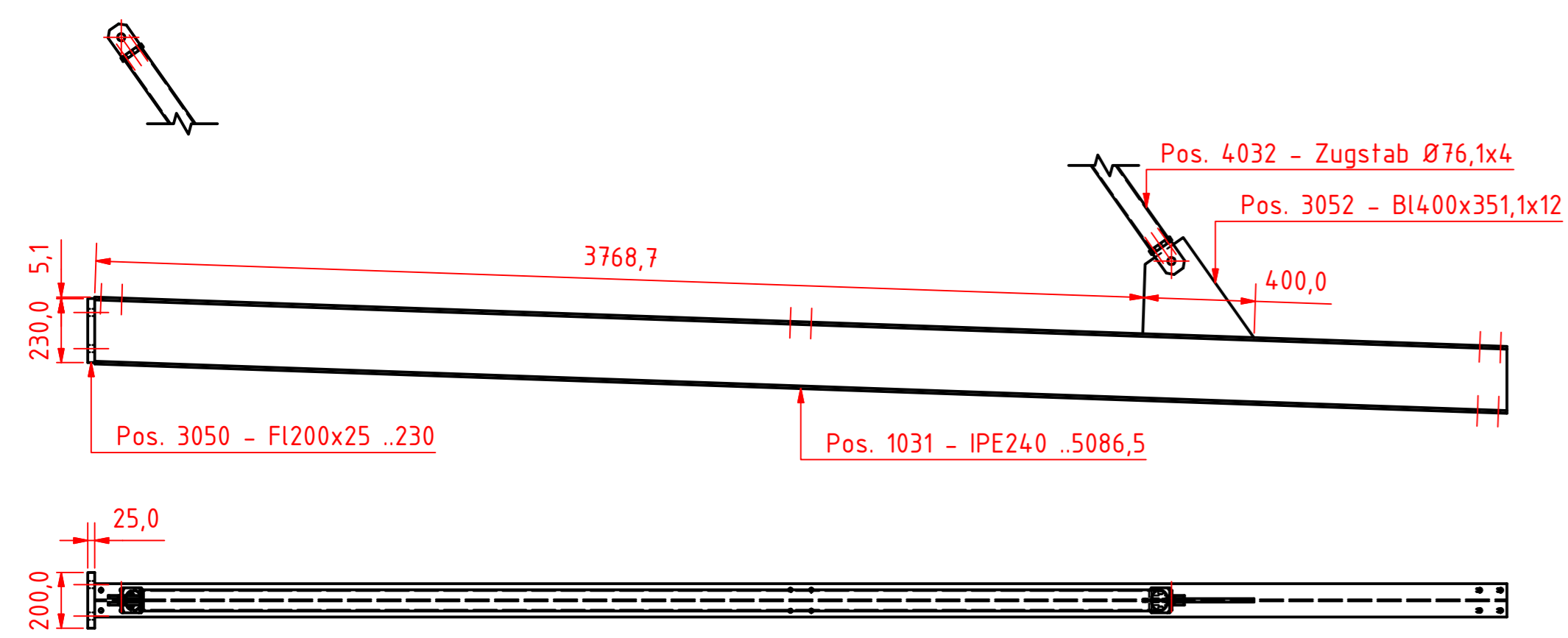
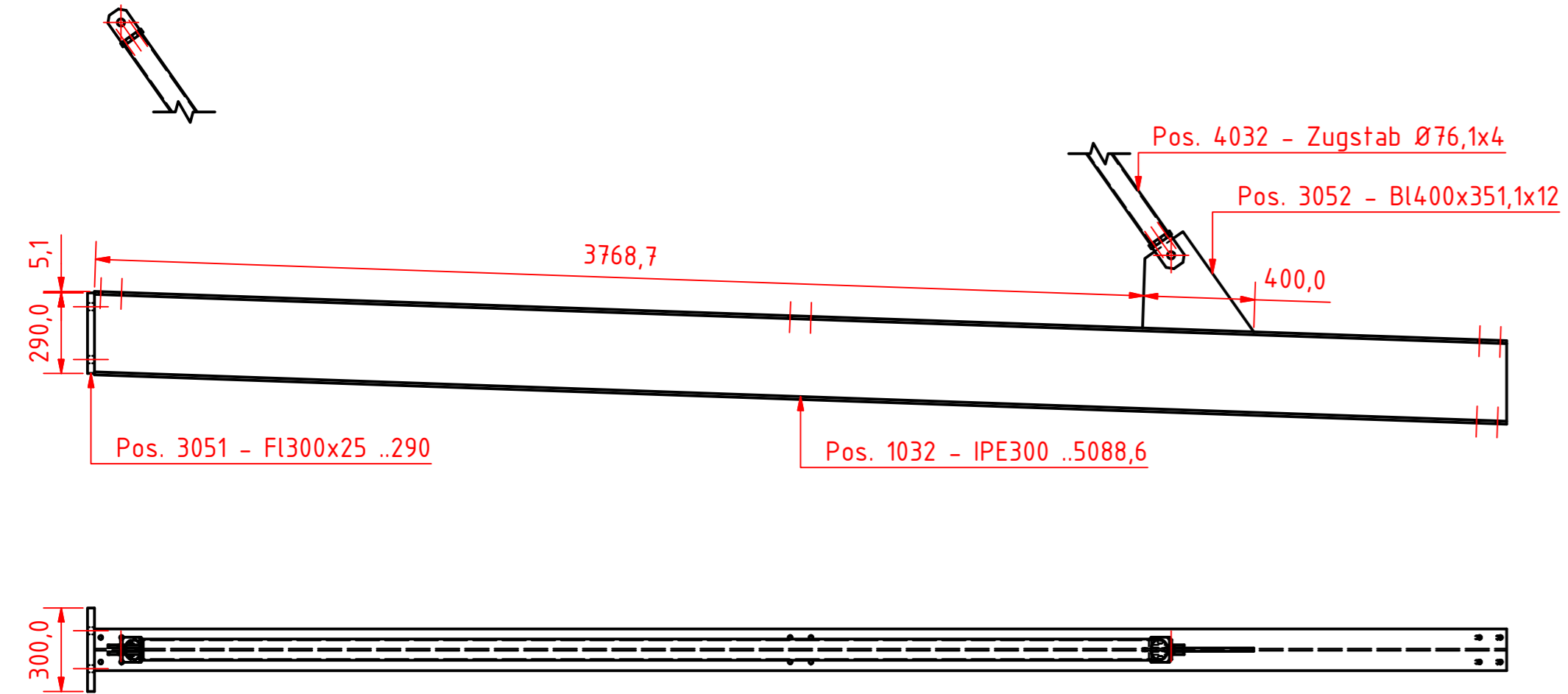


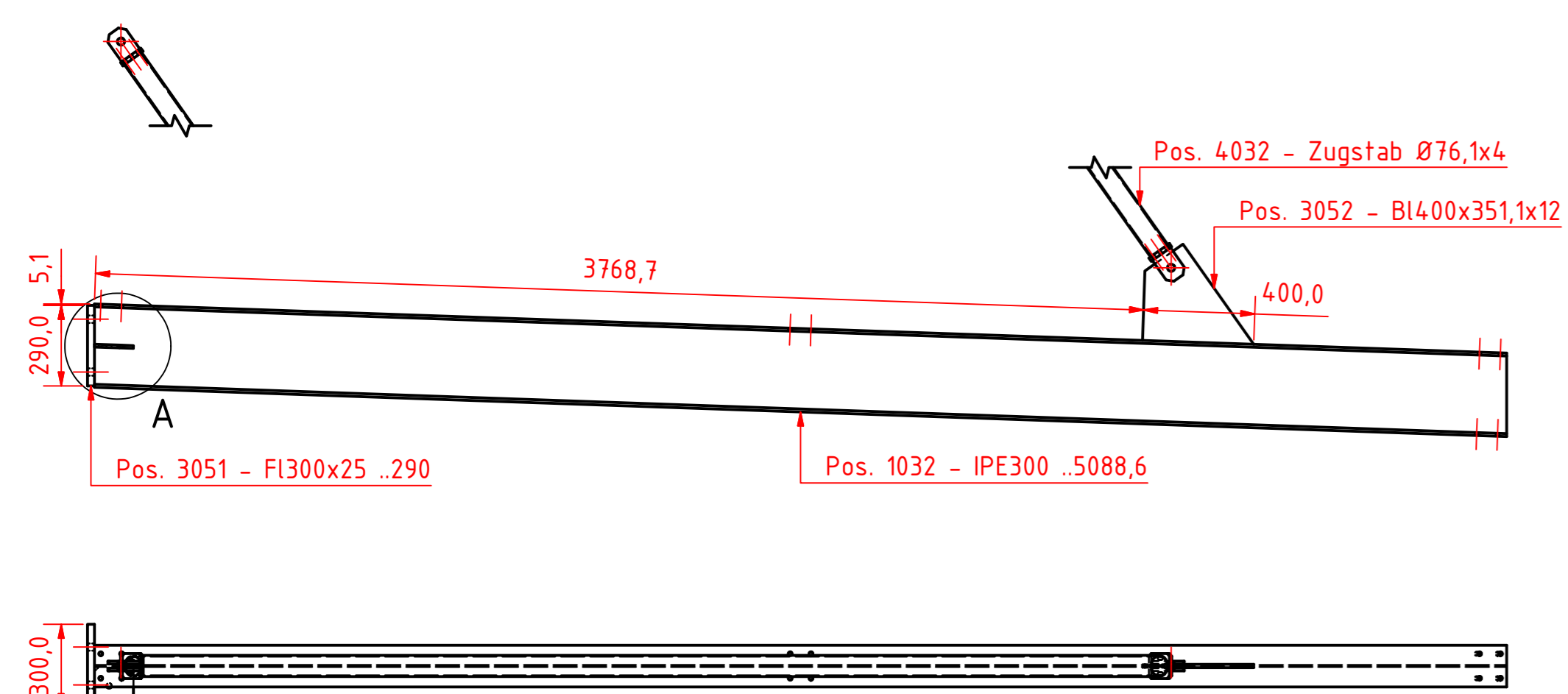
Pos. 4025 - Kragarm IPE240



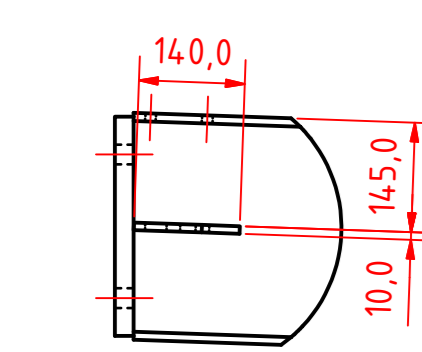
Pos. 4026 - Kragarm IPE300



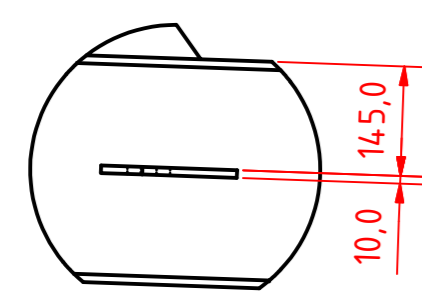
Pos. 4027 - Kragarm IPE300



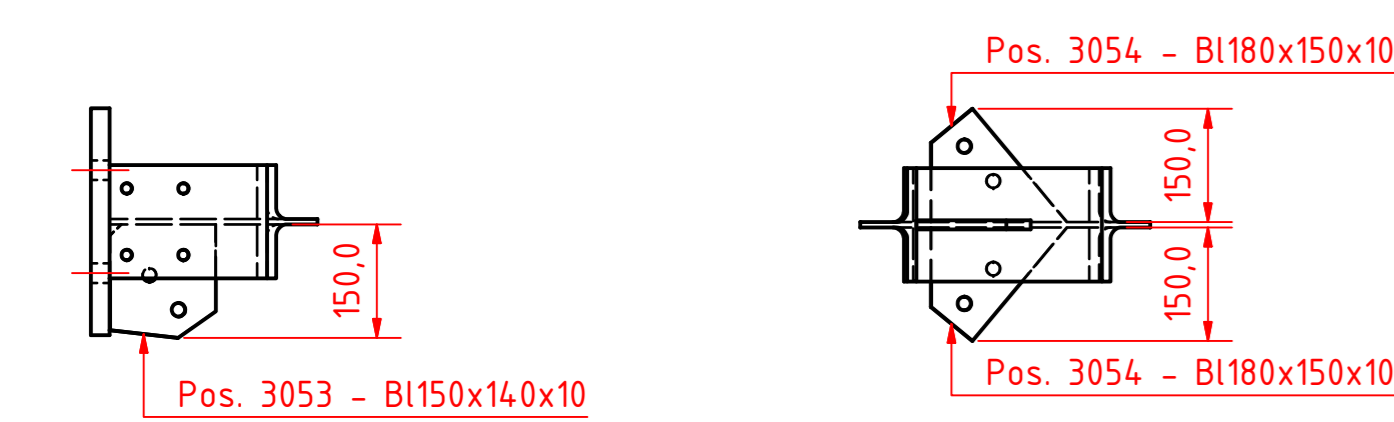
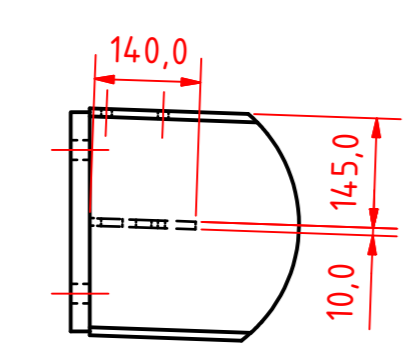
A (1:10)



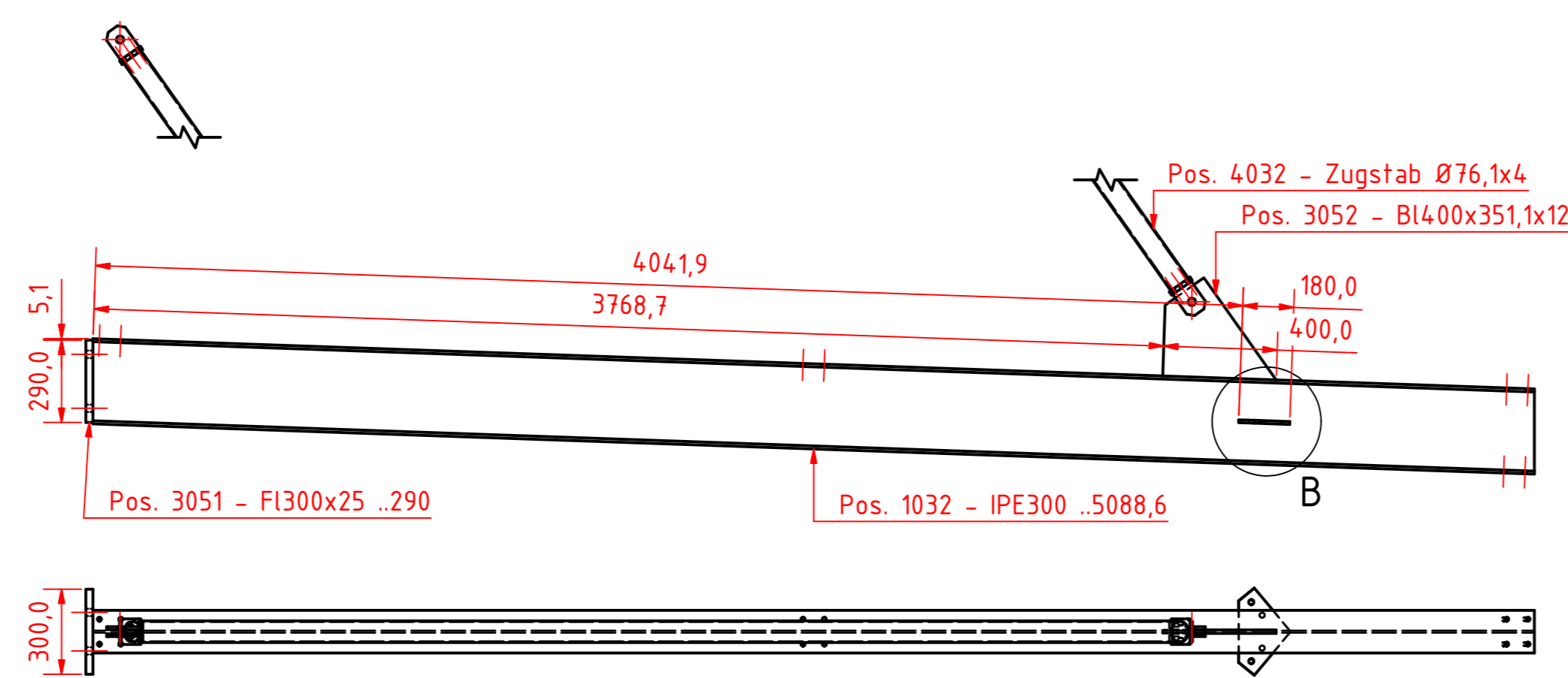
B (1:10)



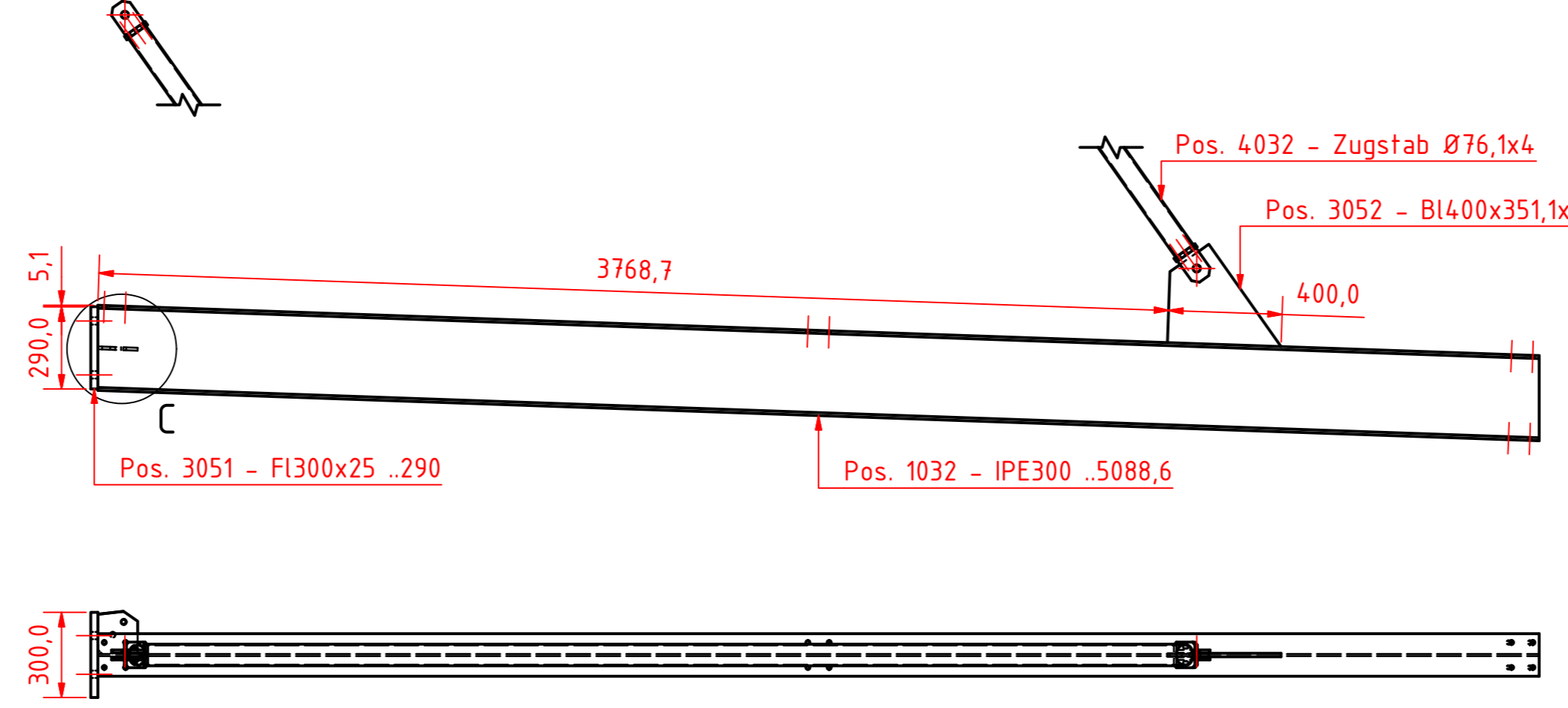
C (1:10)



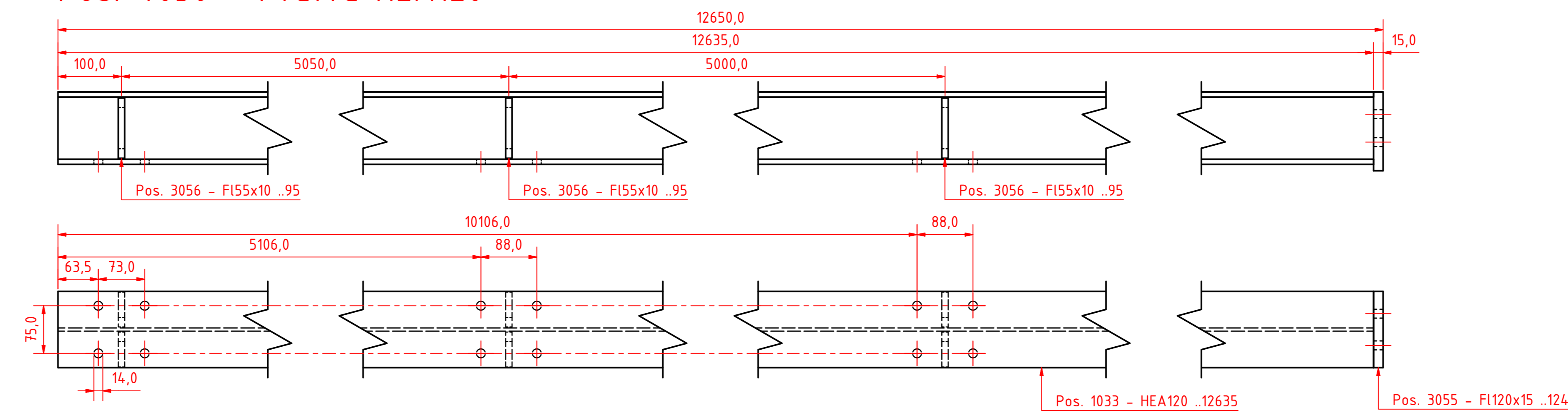
Pos. 4028 - Kragarm IPE300



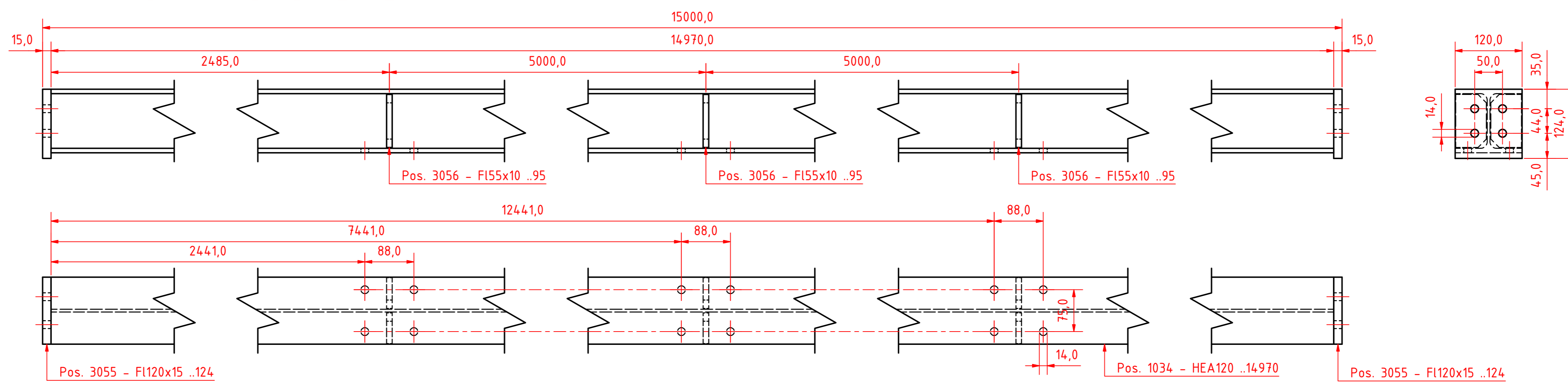
Pos. 4029 - Kragarm IPE300



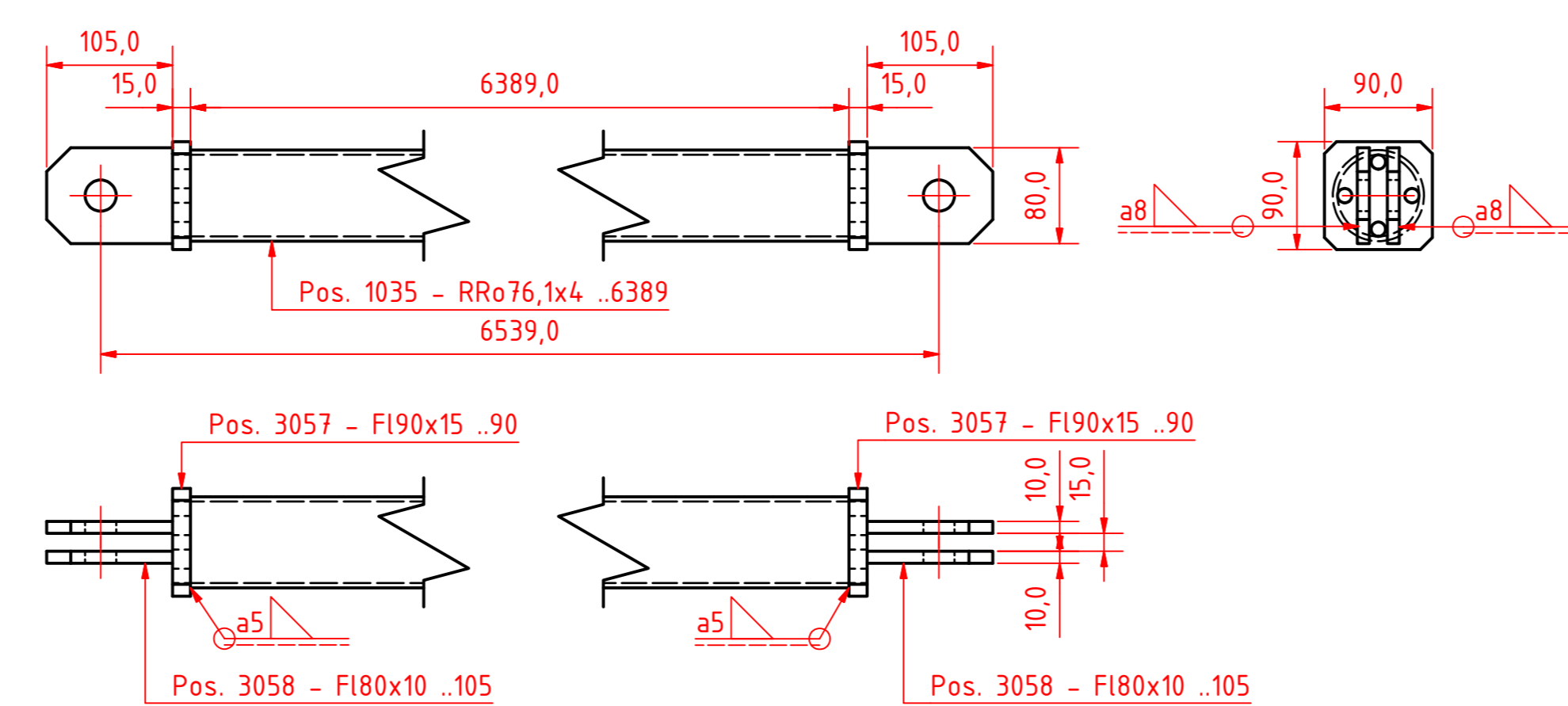
Pos. 4030 - Pfette HEA120



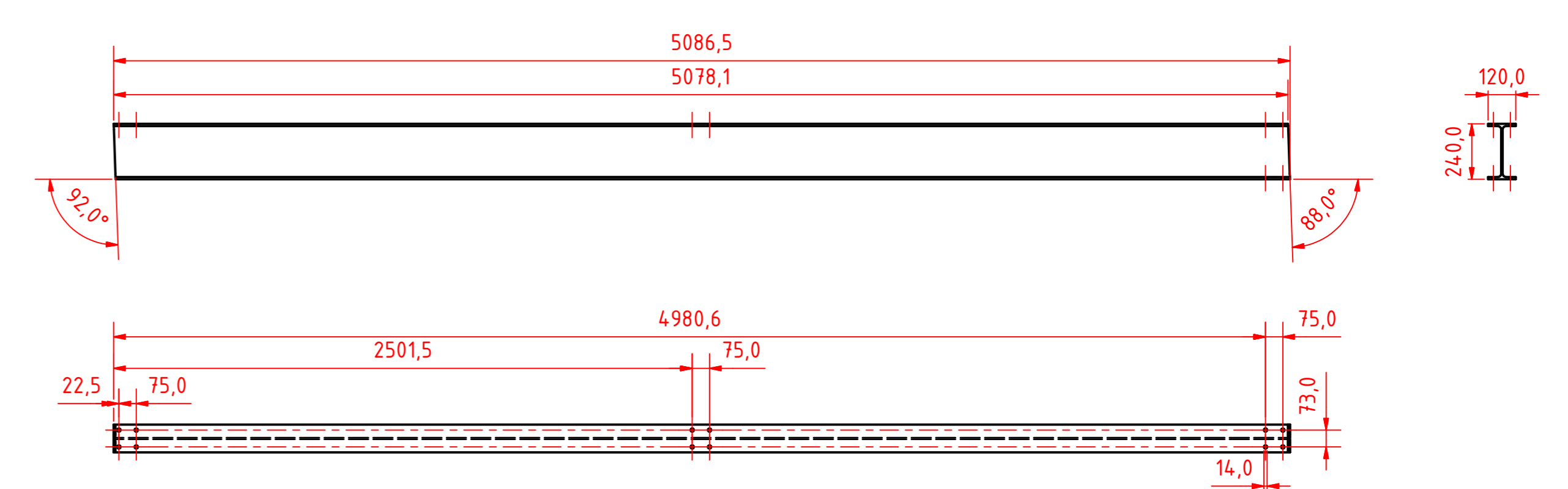
Pos. 4031 - Pfette HEA120



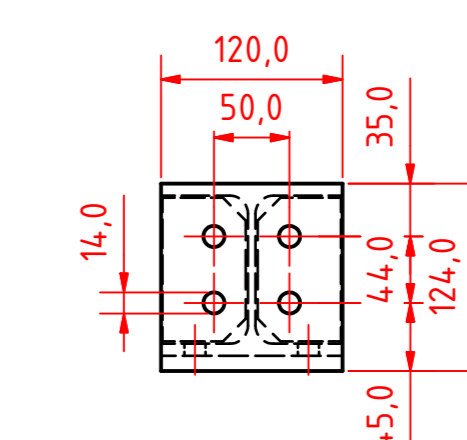
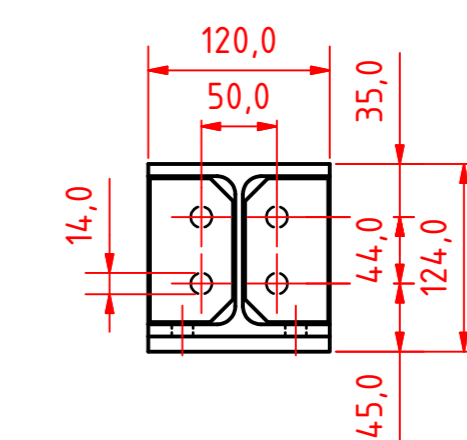
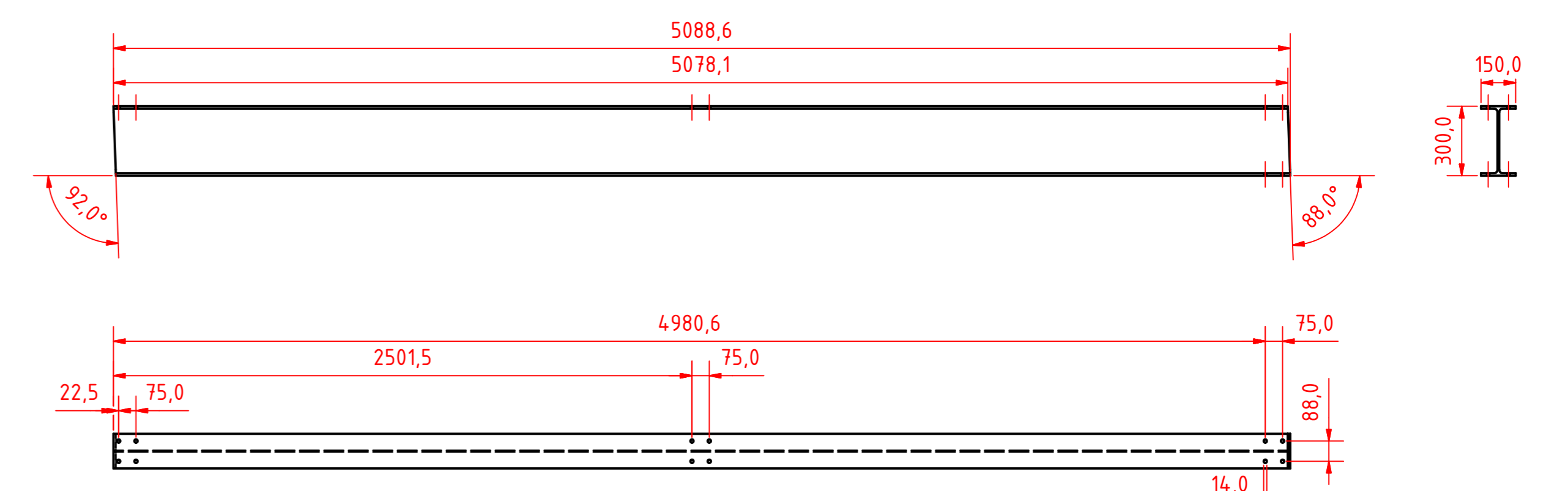
Pos. 4032 - Zugstab Ø76,1x4



Bohrbild - Kragarm IPE240



Bohrbild - Kragarm IPE300



Schraubgröße	Voranziehkraft	Anziehkraft	Stromschlüssel
M12	10 Nm	100 Nm	
M16	50 Nm	250 Nm	
M20	50 Nm	450 Nm	
M22	100 Nm	650 Nm	180°
M24	100 Nm	800 Nm	240°
M27	200 Nm	1250 Nm	
M30	200 Nm	1650 Nm	

Alle unbemalten Schweißnähte alSiFe33mm, alFlansch4mm
Ausführung der Schweißnähte in Bewertungsgruppe C nach DIN EN 25817
Bezugskanten Alle Auskinkungen runden.
Bohr-Ø17 geböhrt

Name: _____
Abt.: _____
Tel.: _____
Fax: _____

Maßstäbe 1:25 / 1:10
Code Nr. Kurzzeichen
Datum Name Benennung
gpr. gpr. gpr.
Abt. _____

Zeichnungs-Nr. 039580-2000-009-00
Urheberschutzvermerk siehe DIN 24
CAD erstellt Standard von _____
Ersatz für Ersetzt durch Entstanden aus
Projekt-Nr. Komm.-Nr. Akte Bestimmt für Werk Gebäude Betrieb

Pos. Nr. Getrennte Stück. Bilder- Anzahl
Zusammenstellung Teilanlage

1 / 1 A0