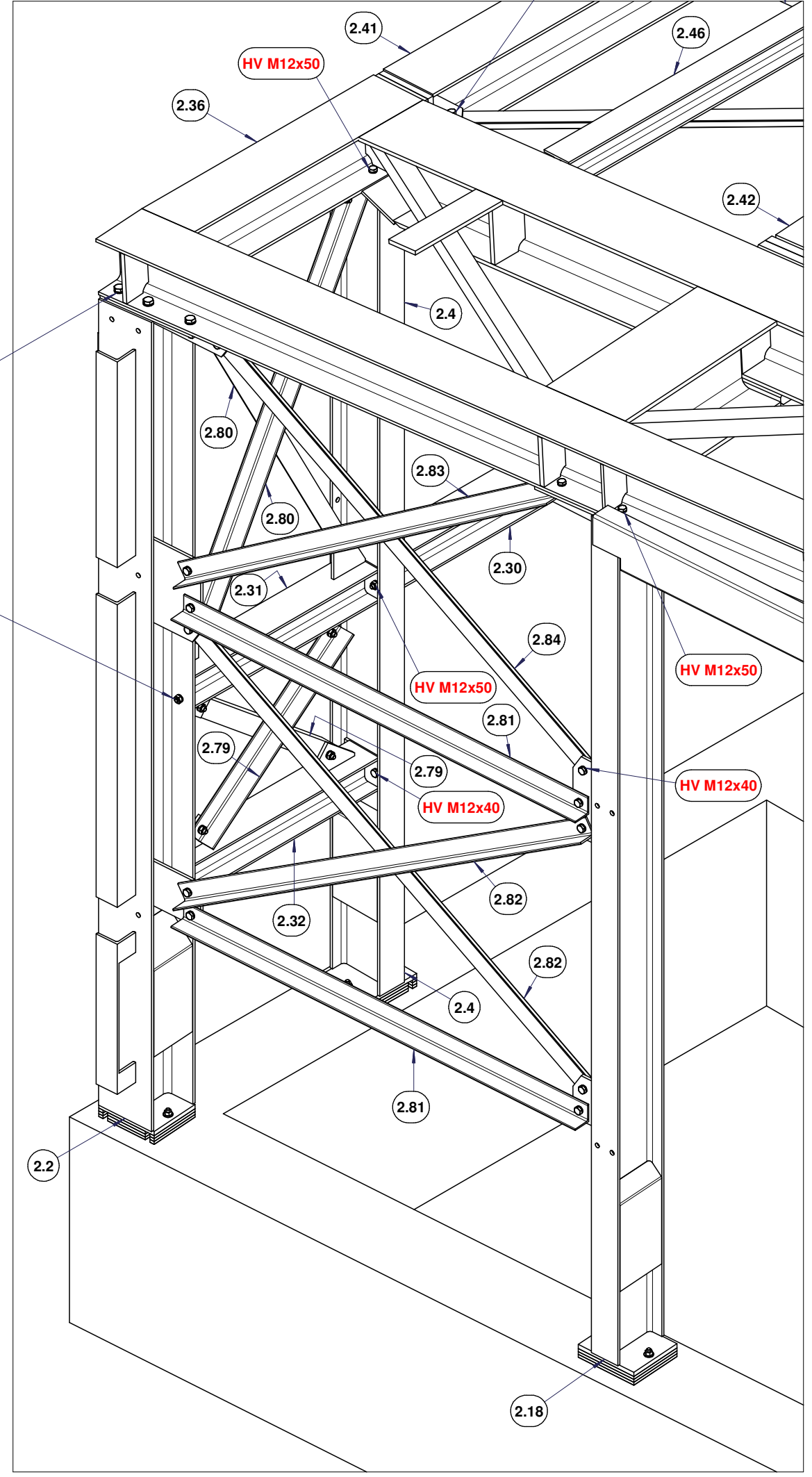
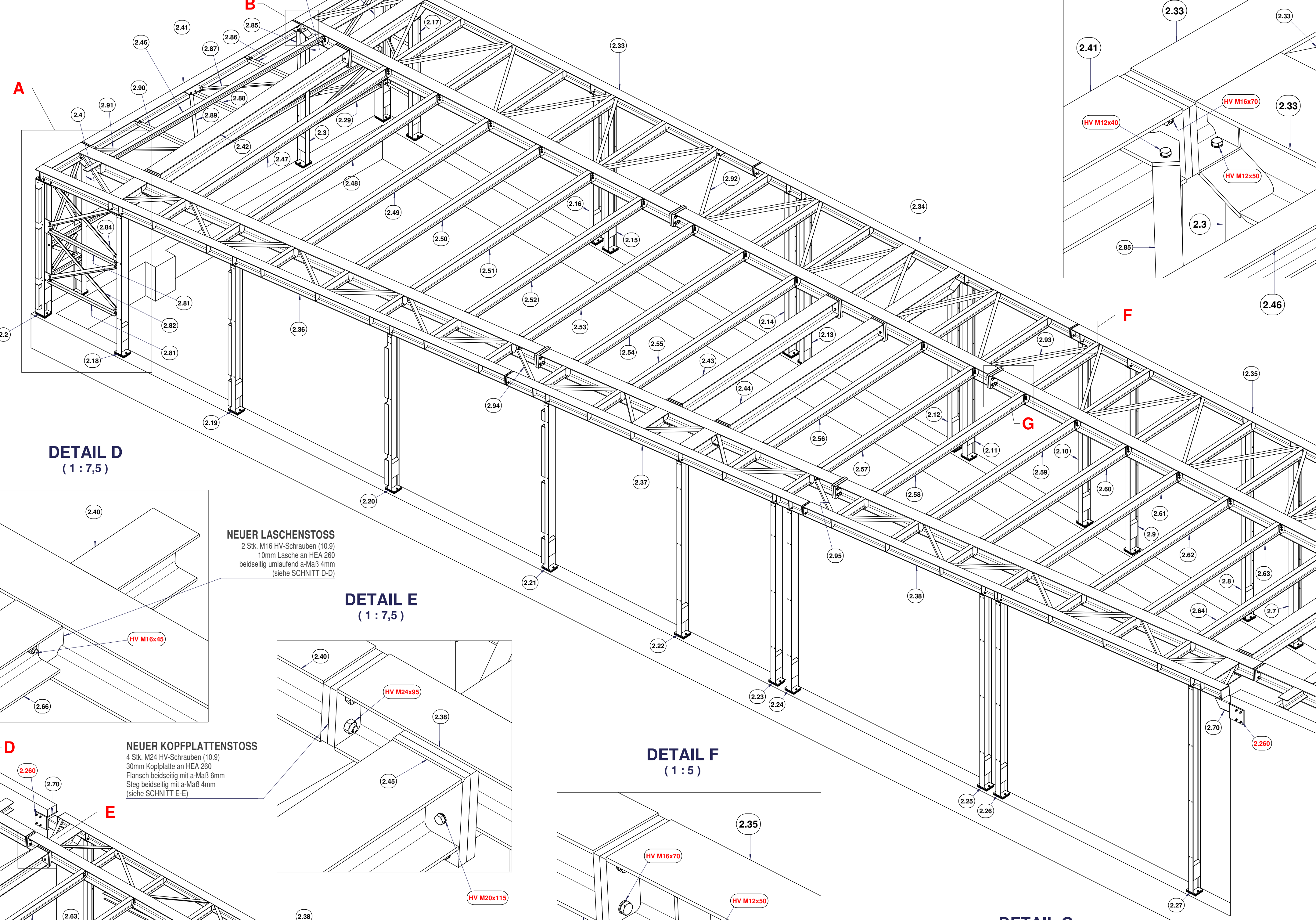


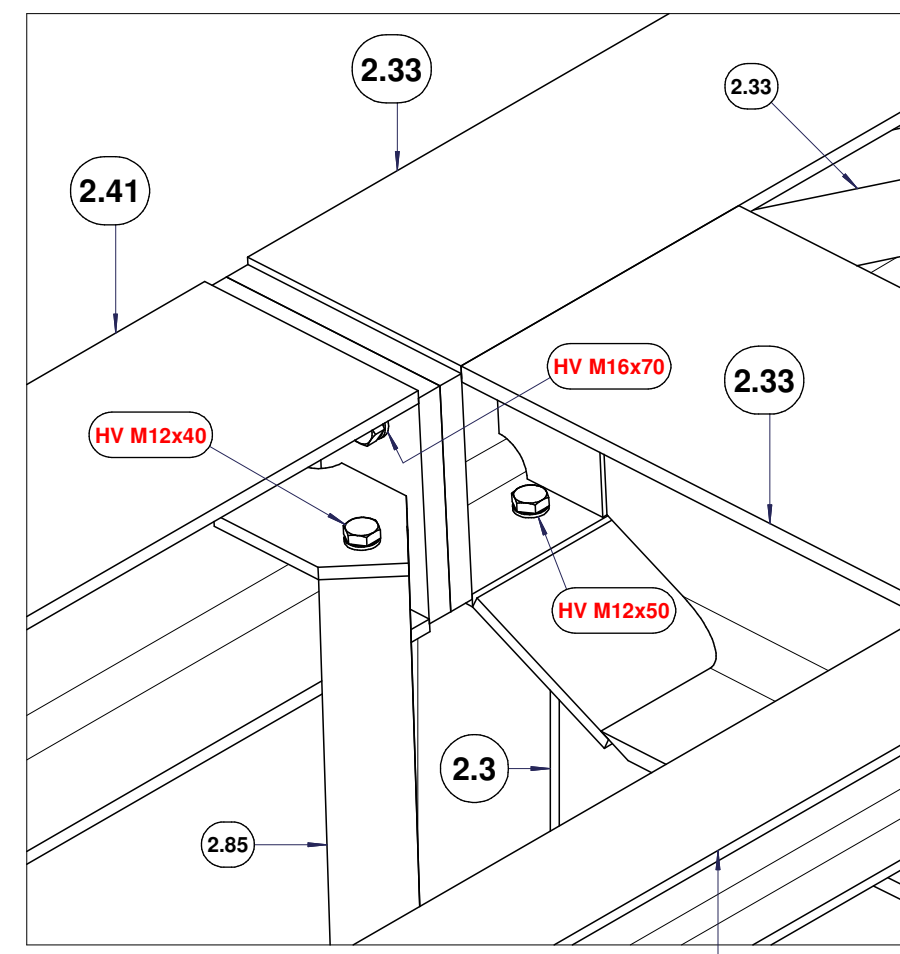
DETAIL A (1:15)



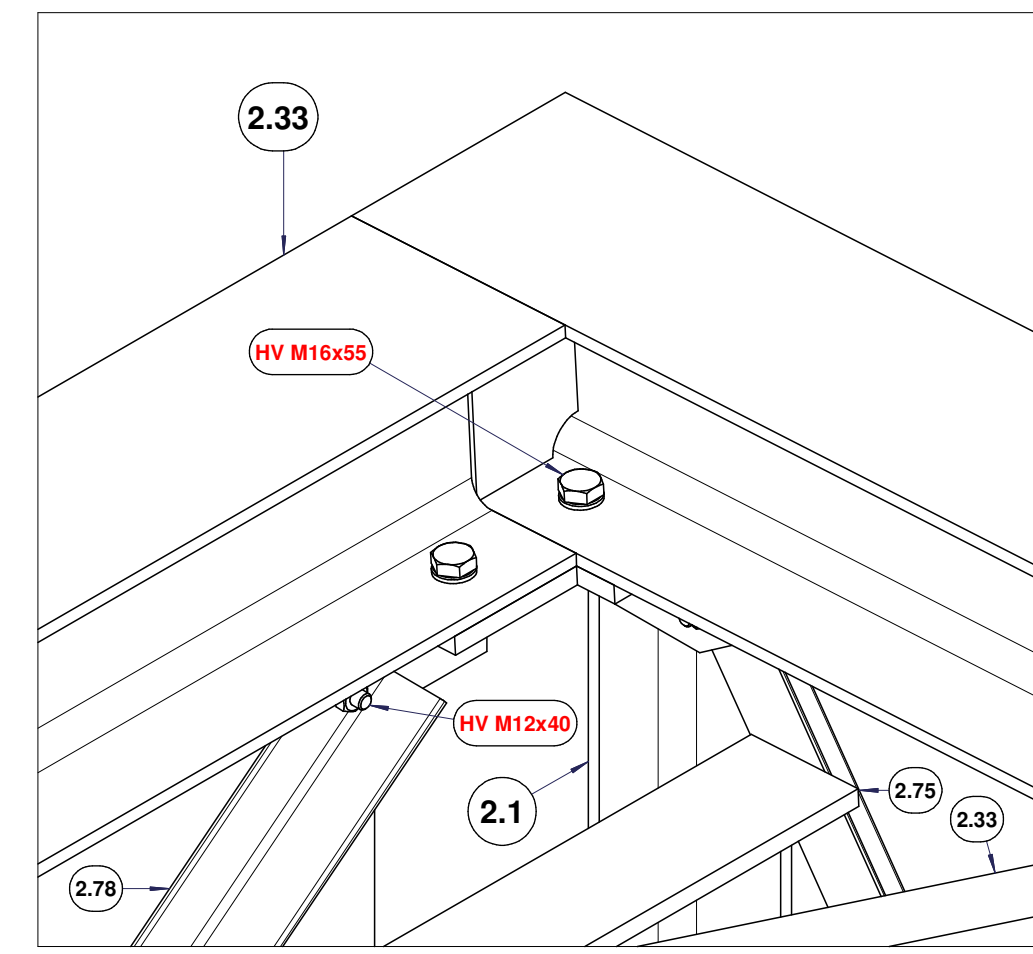
DETAIL B (1:5)



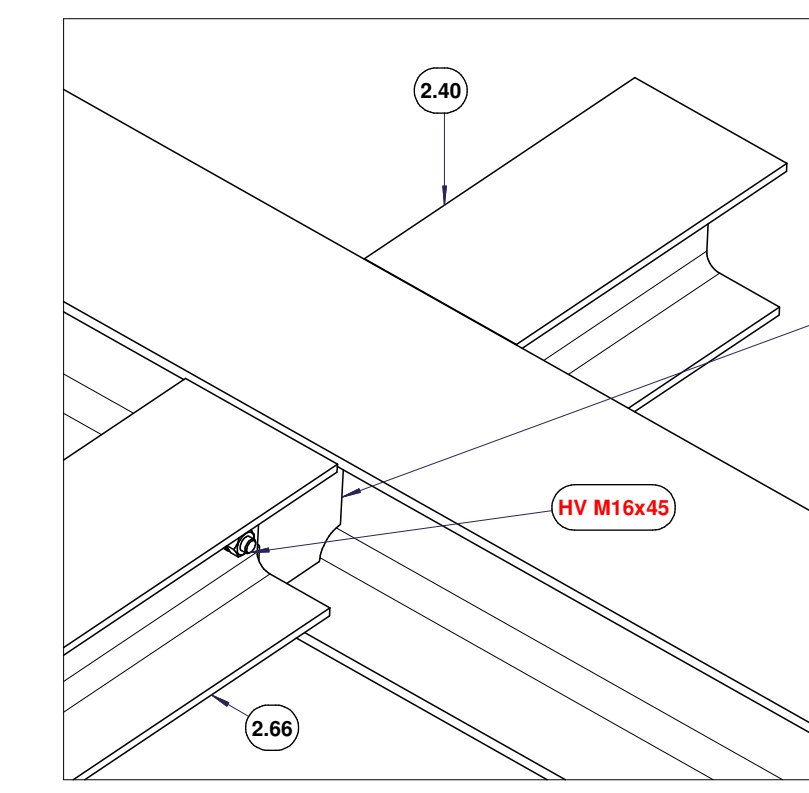
DETAIL B (1:5)



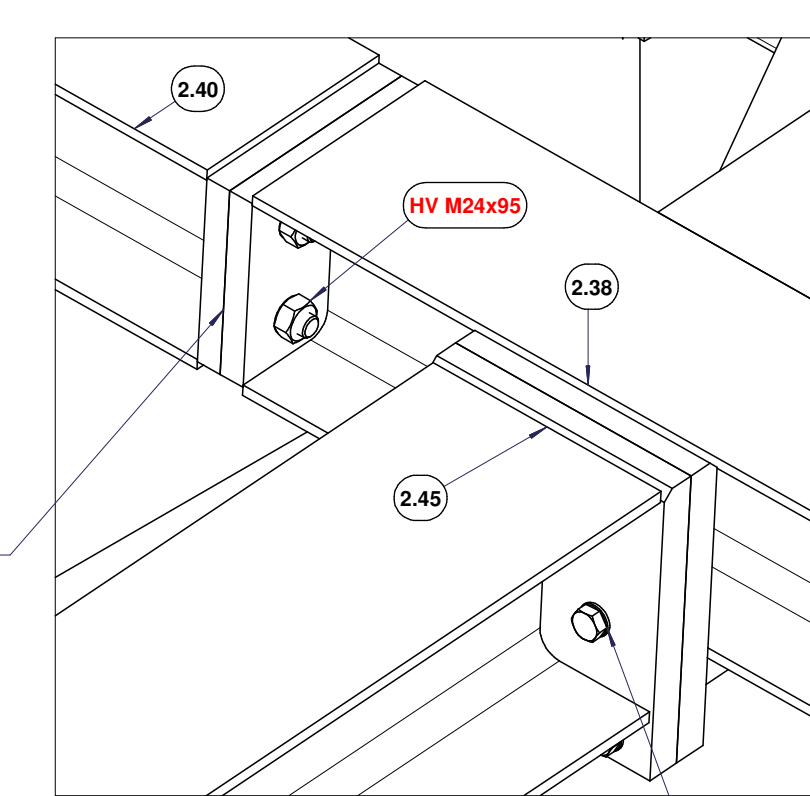
DETAIL C (1:5)



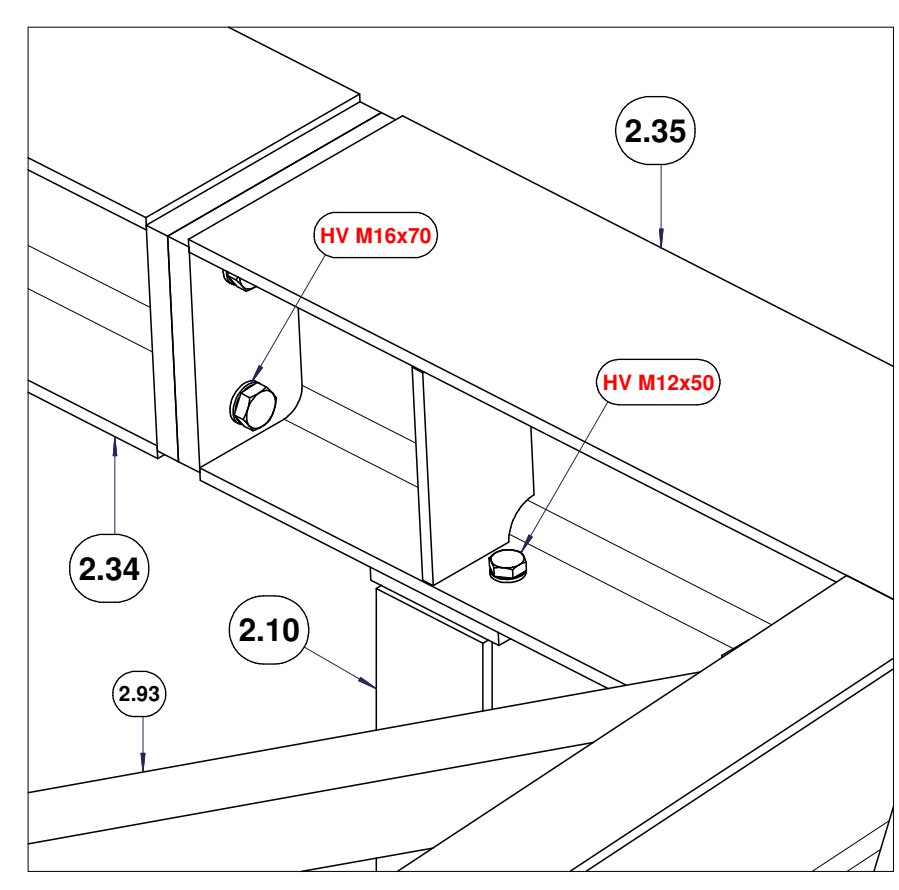
DETAIL D (1:7,5)



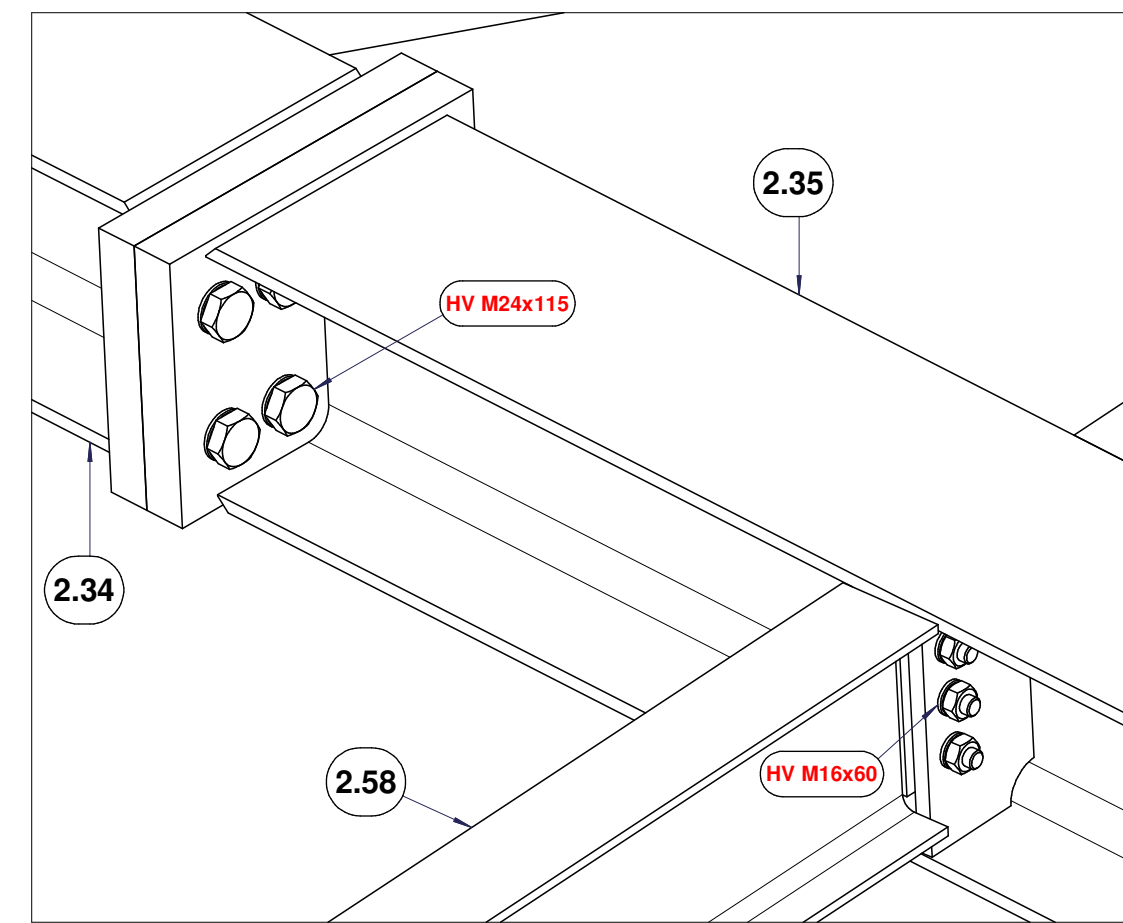
DETAIL E (1:7,5)



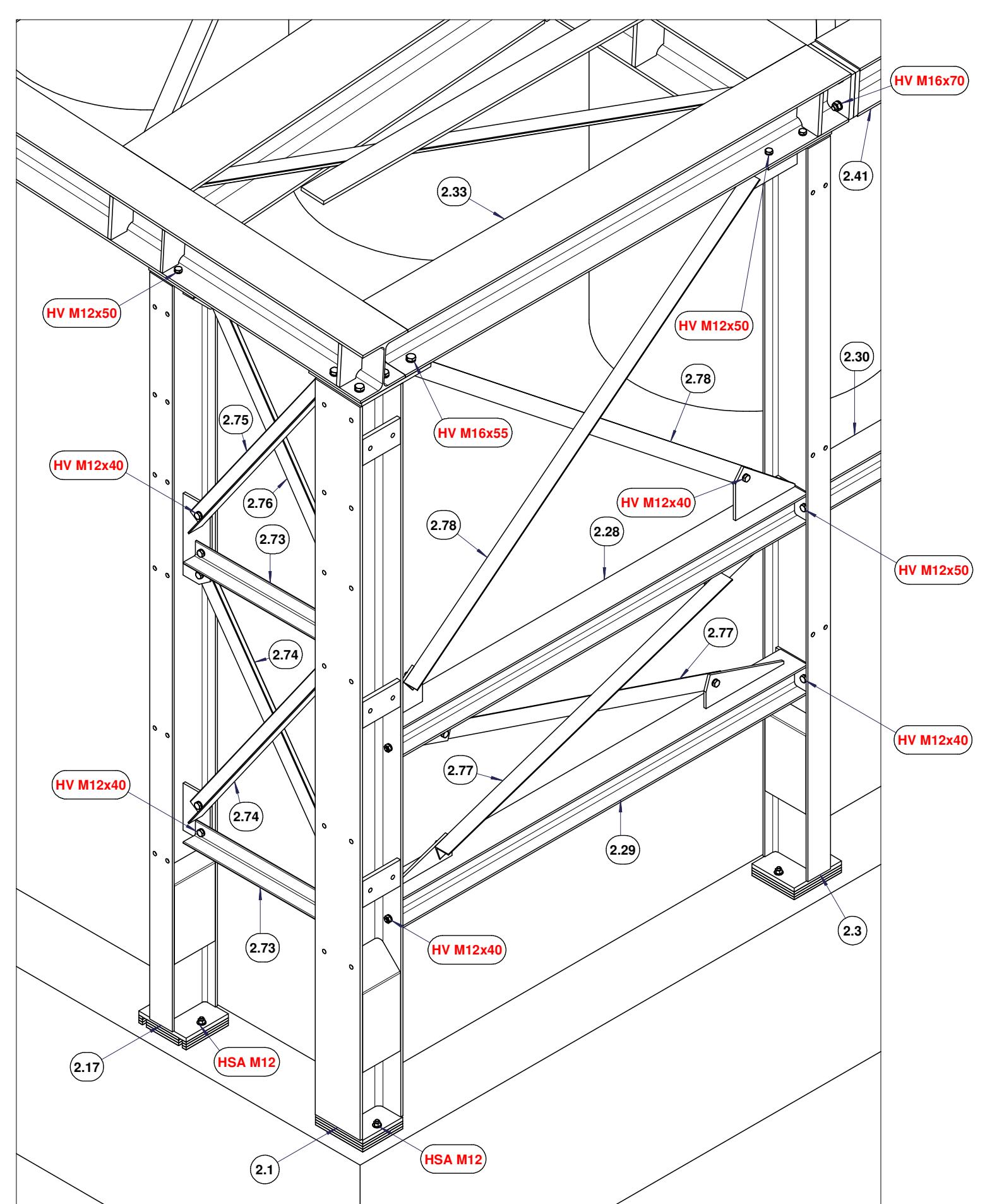
DETAIL F (1:5)



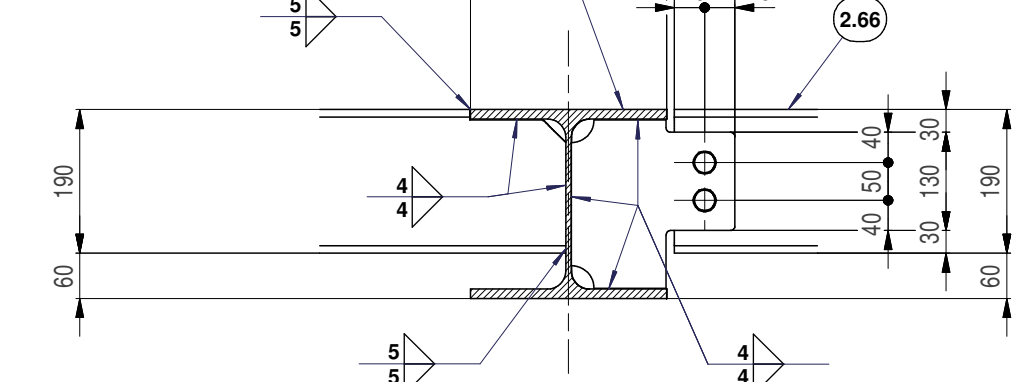
DETAIL G (1:6)



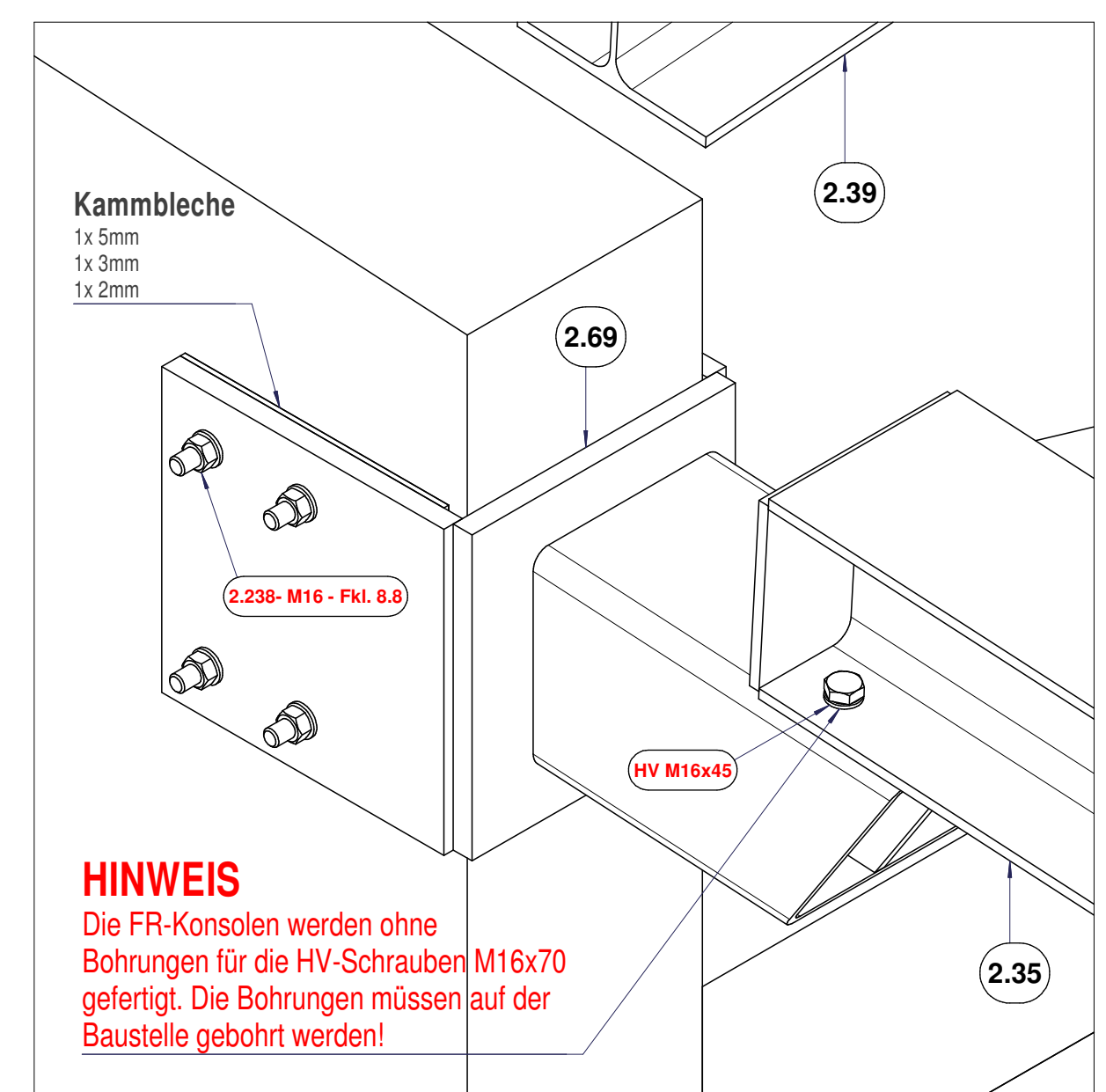
DETAIL H (1:15)



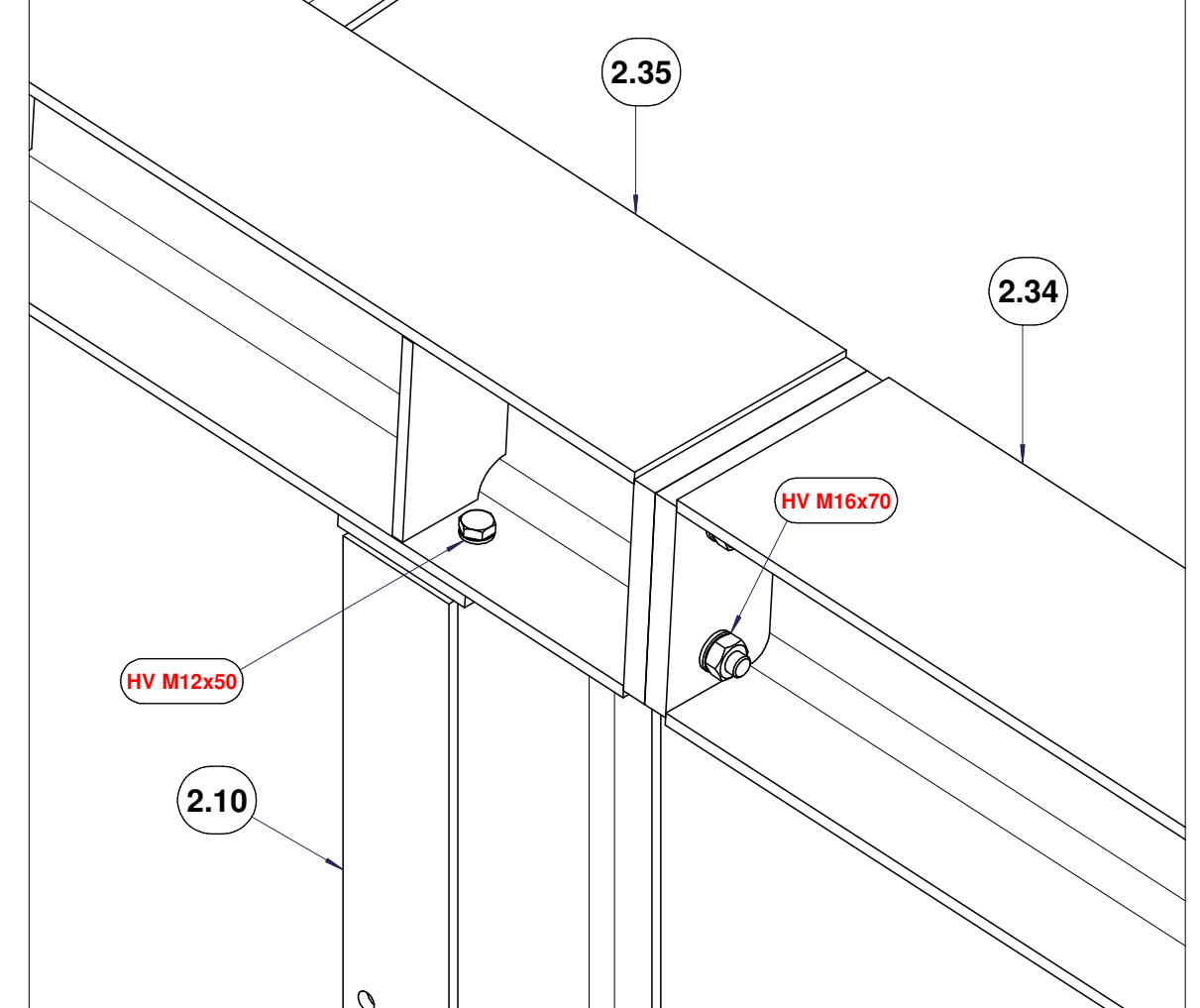
SCHNITT D-D (1:10)



DETAIL J (1:5)



DETAIL K (1:5)



NEUER LASCHENSTOSS
2 Stk. M16 HV-Schrauben (10,9)
10mm Lücke an HEA 260
beidseitig umlaufend ø4x81,6mm
(siehe SCHNITT D-D)

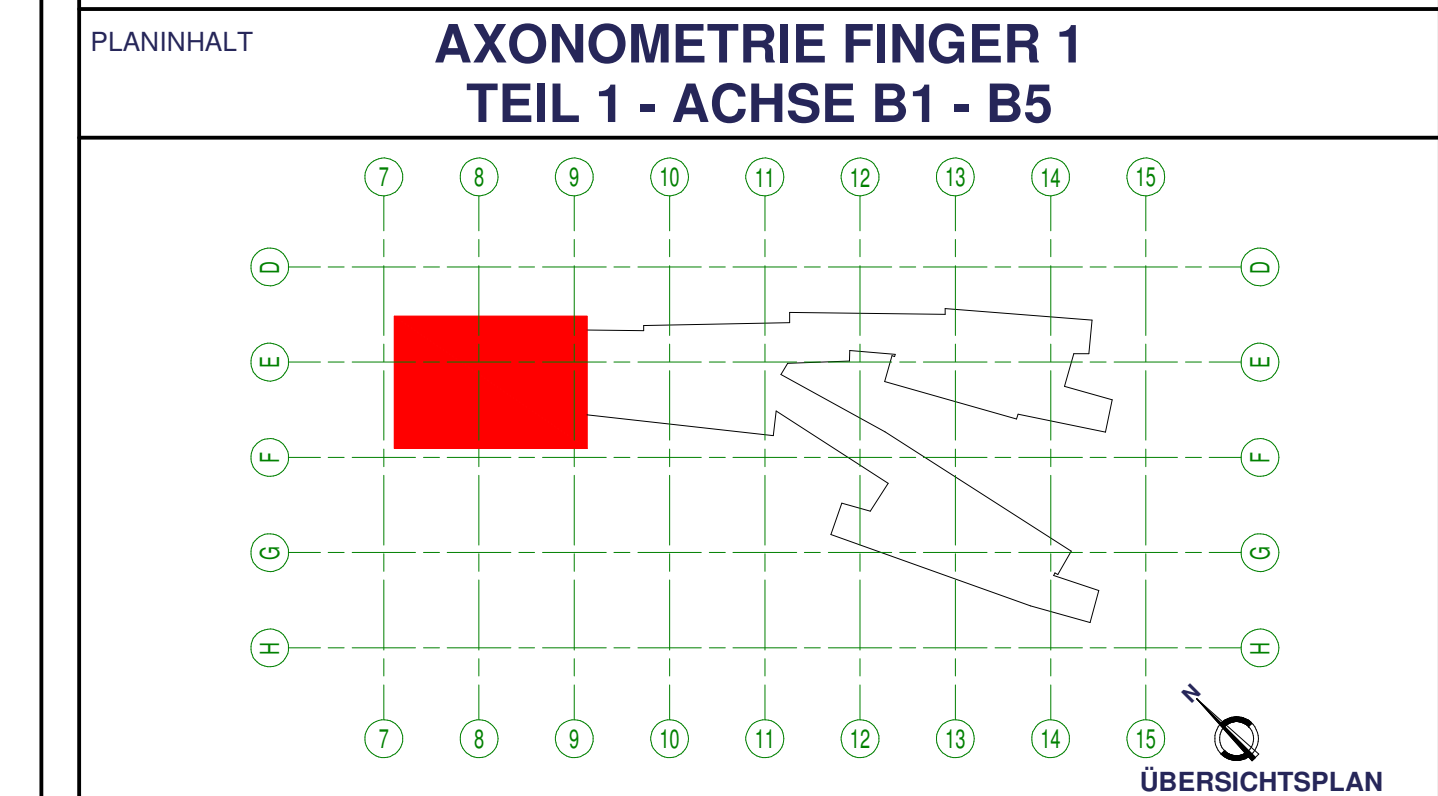
NEUER KOPFPLATENSTOSS
4 Stk. M16 HV-Schrauben 10,9
30mm Kopfplatte an HEA 260
Flansch beidseitig mit ø4x81,6mm
Steig beidseitig mit ø4x81,6mm
(siehe SCHNITT E-E)

HINWEIS
Die FR-Konsolen werden ohne Bohrlöcher für die HV-Schrauben M16x70 gefertigt. Die Bohrlöcher müssen auf der Baustelle gebohrt werden!

Table with columns: Pos., Stk., Beseichnung, Stückliste, Dimension, Werkstoff, Länge, Oberfläche. Lists various structural components and their specifications.

PLANÄNDERUNG

PLANART
MASSSTAB 1:40 (1:5)
ANSCHRIFT 1020 Wien
Südparkstrasse / Rindumersplatz
BIG & Wirtschaftsuniversität Wien



Project information including: BAUHER (BIG), PLANVERFASSER (GIG FASSADEN GmbH), ENTWURFSARCHITEKT (Estudio Carme Pindo), FREIGABE PLANER, and various technical specifications.