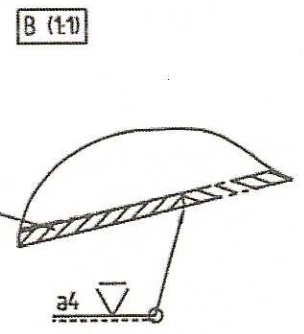
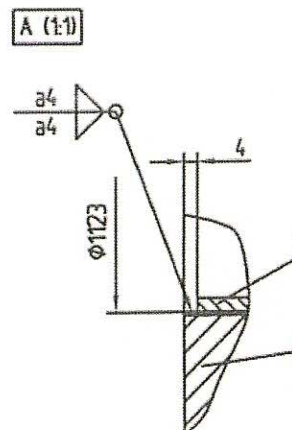
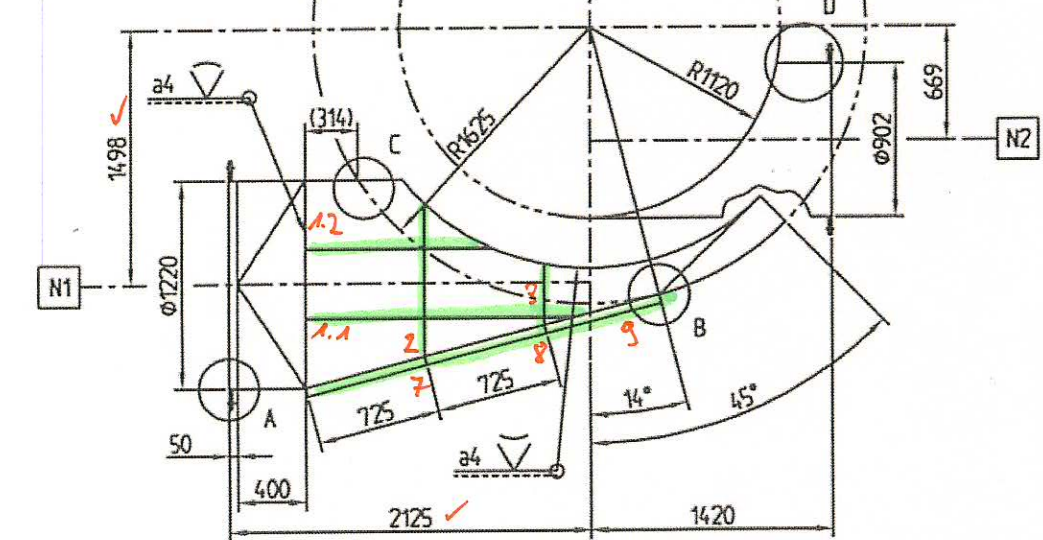
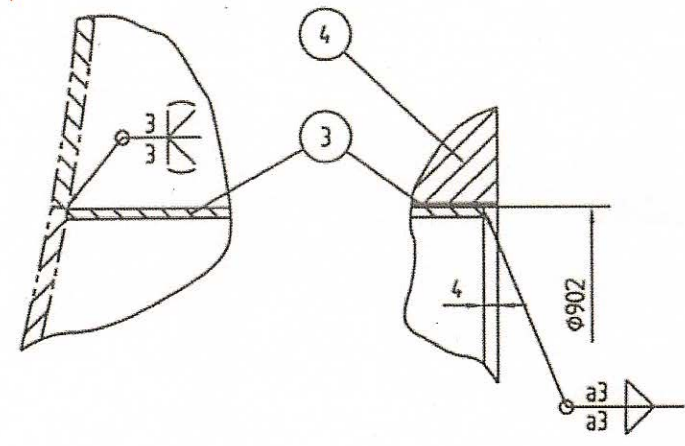
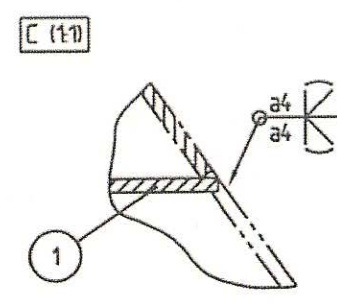
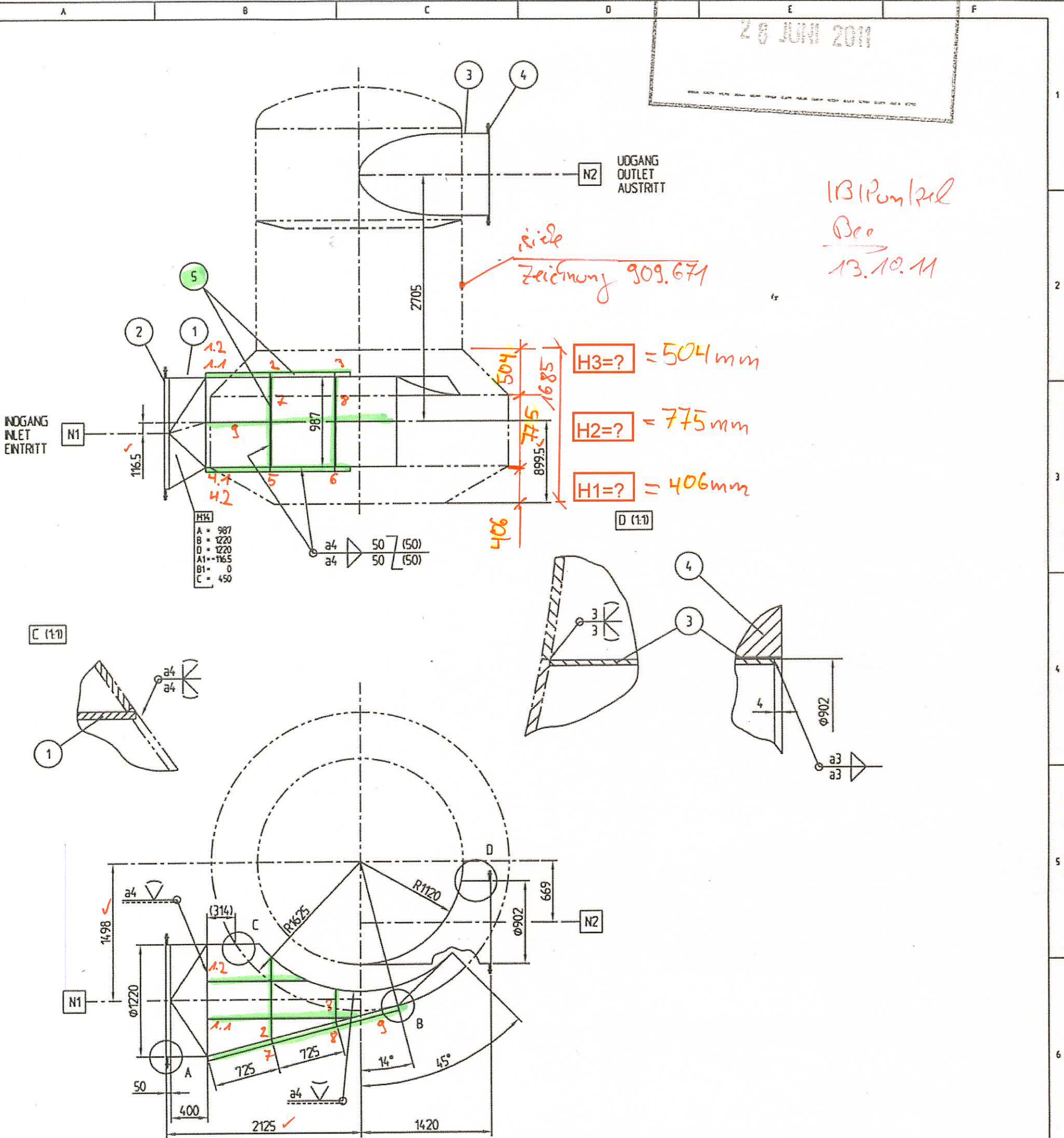


28 JUNI 2011

*IBIPunktl
Beo
13.10.11*

*siehe
Zeichnung 909.671*

H3=? = 504 mm
H2=? = 775 mm
H1=? = 406 mm



MATR: SE SAMLINGSTEGNING.
MATR: SEE ASSEMBLY DRAWING.
MATR: SIEHE ZUSAMMENSTELLUNGSZEICHNUNG.

M = 50 x 5	5	MATR-2	M17
1 FLANGE / SE SAMLINGSTEGNING FLANGE / SEE ASSEMBLY DRAWING FLANSCH / SIEHE ZUSAMMENST. Z.	4	MATR-1	N2 1.4571
PLATE PLATTE	3	MATR-1	1.4571
1 FLANGE / SE SAMLINGSTEGNING FLANGE / SEE ASSEMBLY DRAWING FLANSCH / SIEHE ZUSAMMENST. Z.	2	MATR-2	M17
PLATE PLATTE	1	MATR-2	M17

STYK BEFØRSEL BY: DESCRIPTION MØL. BEHØVNING	POS. NR. BYG. NR./TWR DEL. NR. BOKK. NR./TYP	MATERIAL MATERIAL VERKSTOFF	BEHØVNING BEHØVNING BEHØVNING	VEGT VEGT VEGT
<p>anhydro AS PNEUMATIK</p> <p>SPK Pneu Technology Denmark A/S Søndermark 7, 2880 Søborg Denmark www.anhydro.com</p>		Date	Drawn	Discp
<p>IND- OG UDGANGSSTUETS IN- AND OUTLET BRANCH Ø2240 Nr.68 EIN- UND AUSTRITTS STUTZEN</p>		Status	860.976A	908.006 A

Tolerance ifølge
Tolerance according to } DIN 7168-g
Toleranzen nach

REV.	DATE	BY	CHKD	REVW	DESCRIPTION	QTY
A	28.06.11	ARA	ARA		Height changed	