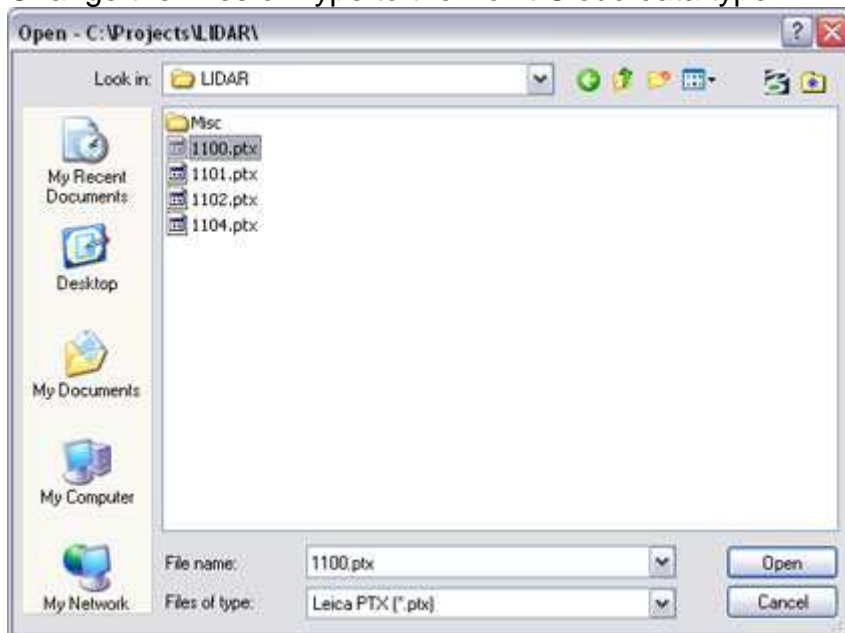


Attaching Point Clouds in MicroStation V8i (SELECTseries)

The ability to reference Point Cloud data has been included in the (SELECTseries 2) release of MicroStation. It is as easy as attaching any reference file in MicroStation. Below are the steps and a couple tips on working with the data.

1. From the MicroStation pull down menu select **File > Point Clouds**. The Point Clouds dialog will appear.
2. the **Attach** button and the Open dialog will appear.
3. Path to the Look in directory of your data
4. Change the Files of Type to the Point Cloud data type.

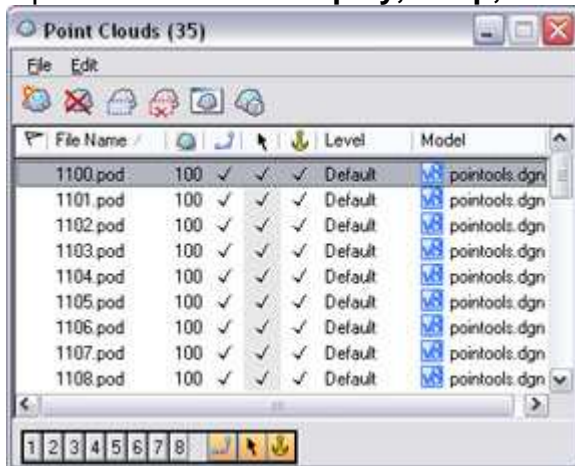


- o Available formats include:
 - Pointools POD
 - Terrascan BIN
 - Topcon CL3
 - Faro FLS
 - LAS
 - Leica PTG
 - Leica PTS Leica PTX
 - Riegl 3DD
 - Riegl RDB
 - Riegl RXP
 - Riegl RSP
 - Generic Text XYZ
 - Generic Text TXT
 - o Multiple files can be selected by using the Shift and Ctrl Keys.
5. Modify any Settings needed then the **OK** button. The Specify new pod file dialog will appear.

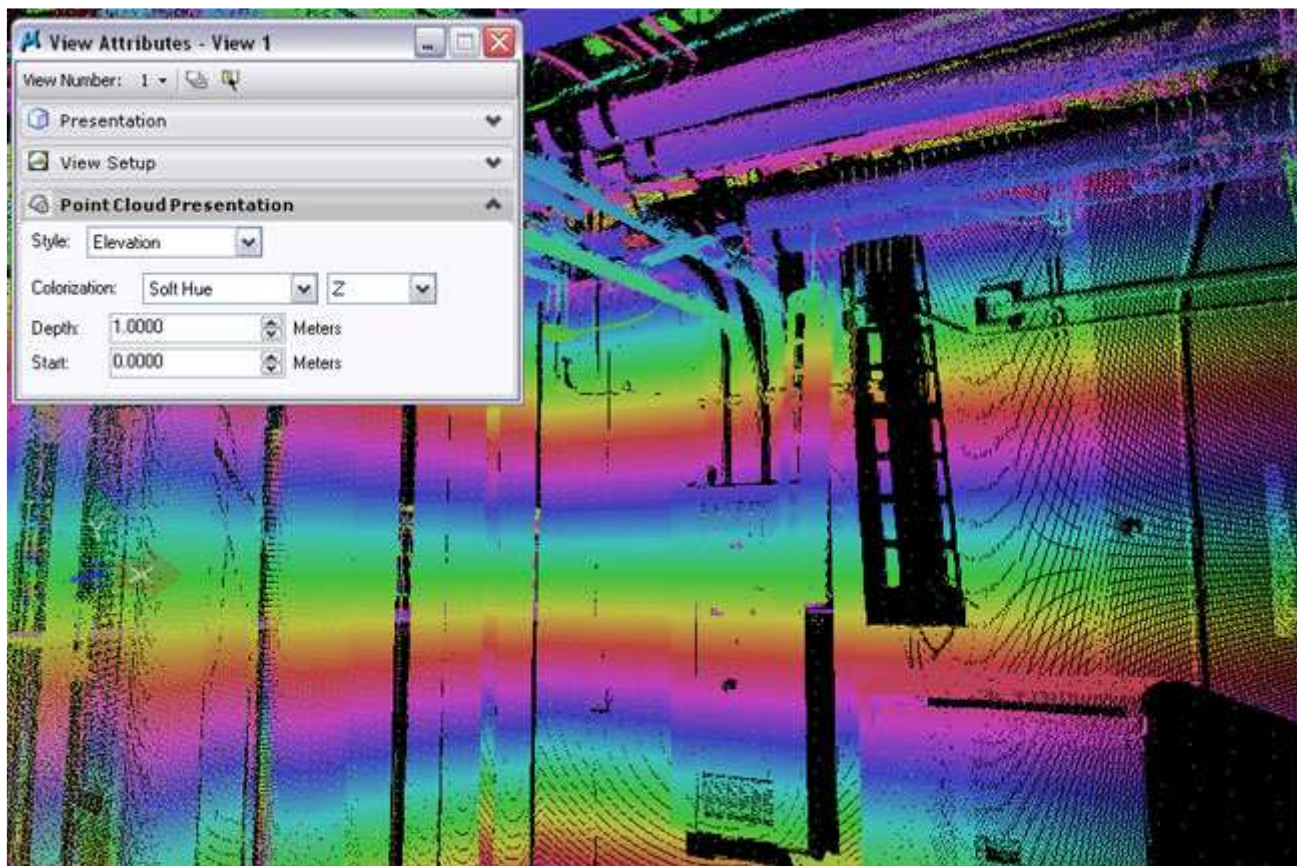
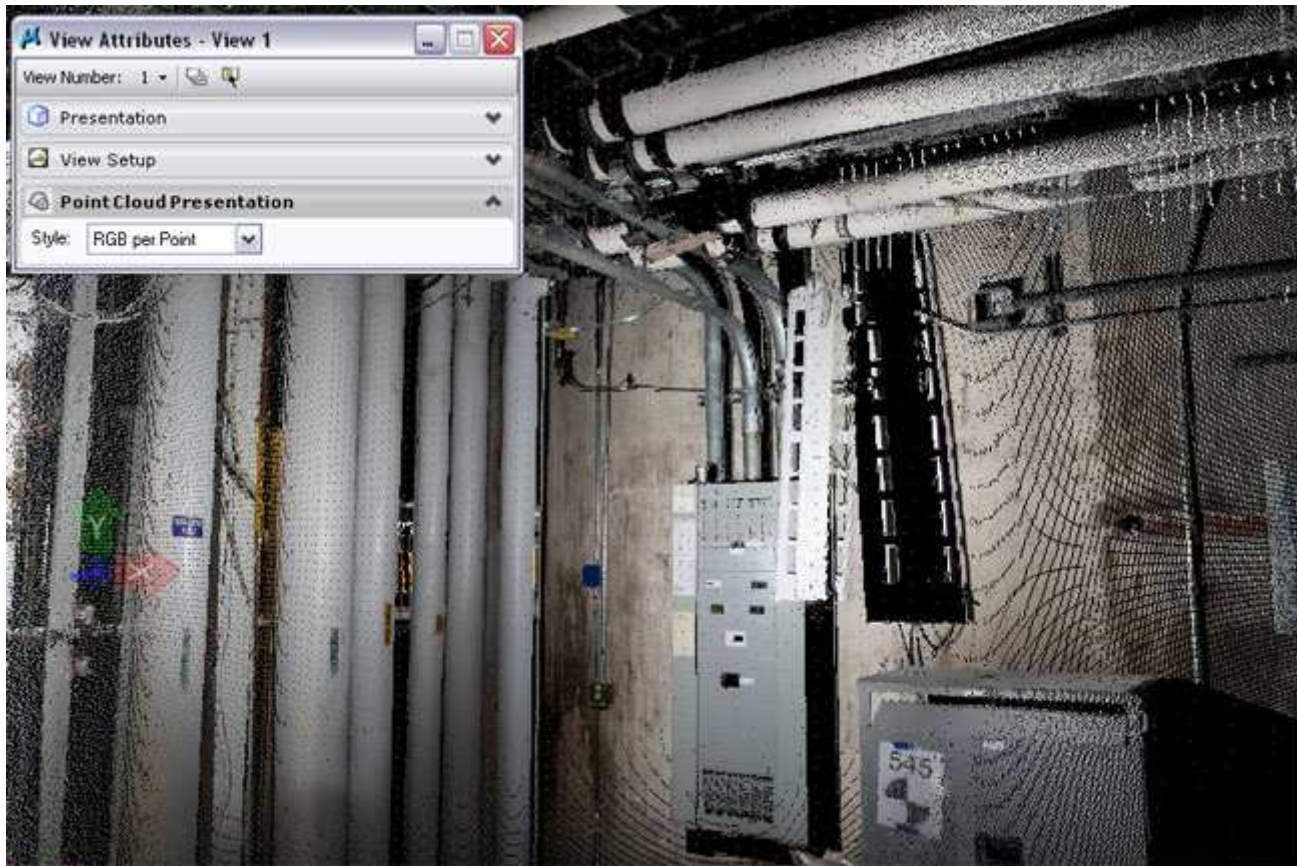


Note: MicroStation requires the PTX file to be converted to a POD file. A new POD file of the same name will be created leaving the original PTX file unchanged.

6. The **POD** file will appear in the Point Clouds dialog.
7. Options include for **Display, Snap, Locate, and Anchoring**.



8. Presentation of the Point Cloud can be modified from the View Attributes dialog.



View Attributes - View 1

View Number: 1

Presentation

View Setup

Point Cloud Presentation

Style: Intensity

Colorization: Hue

Range: 13 %

Offset: 50 %

