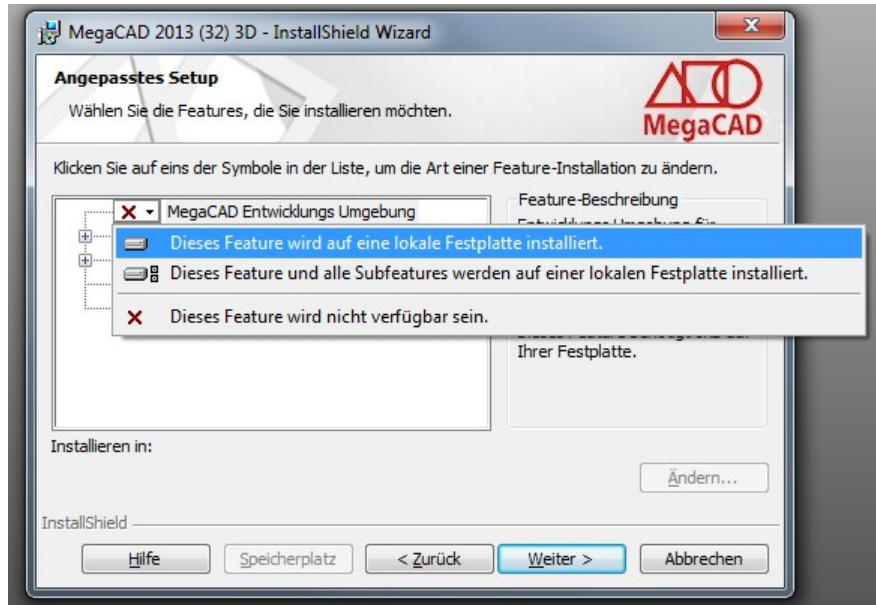
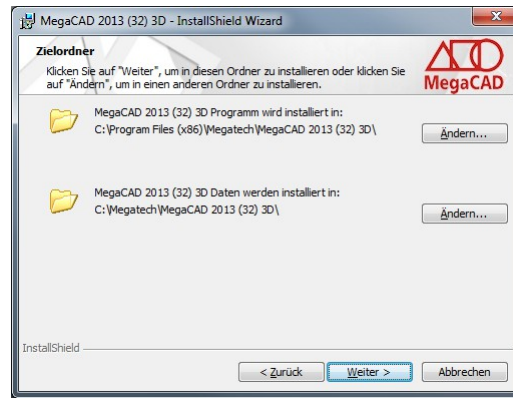
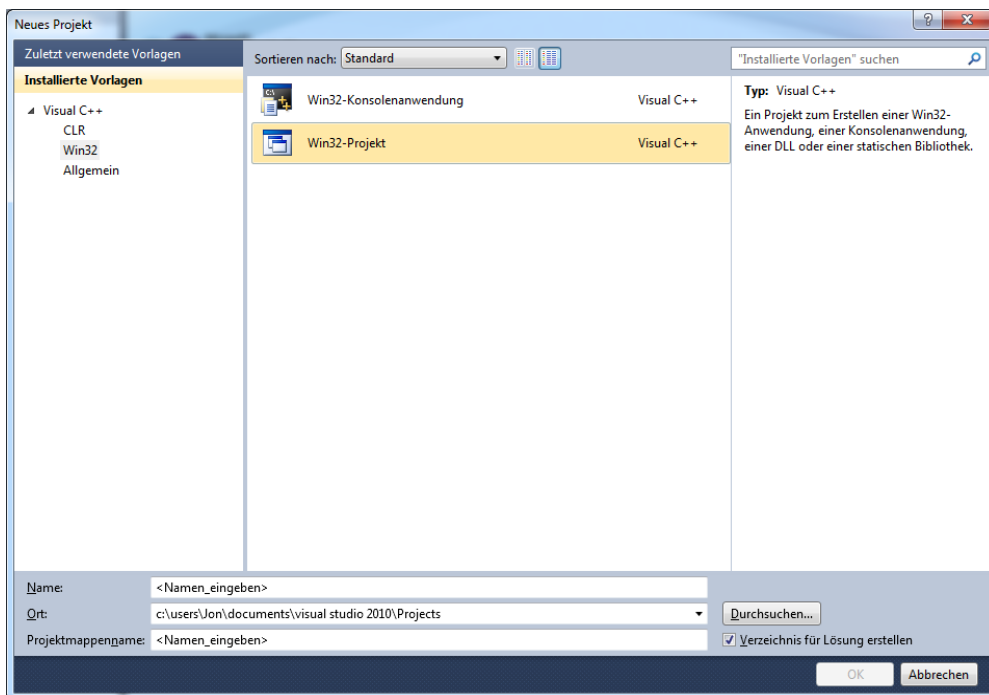
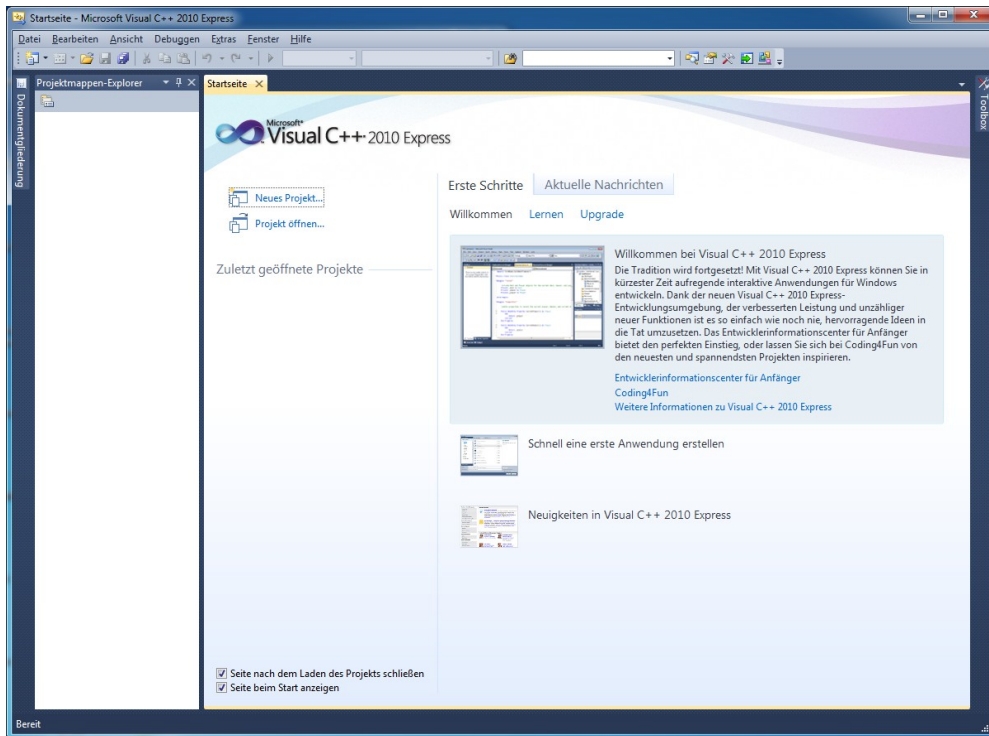
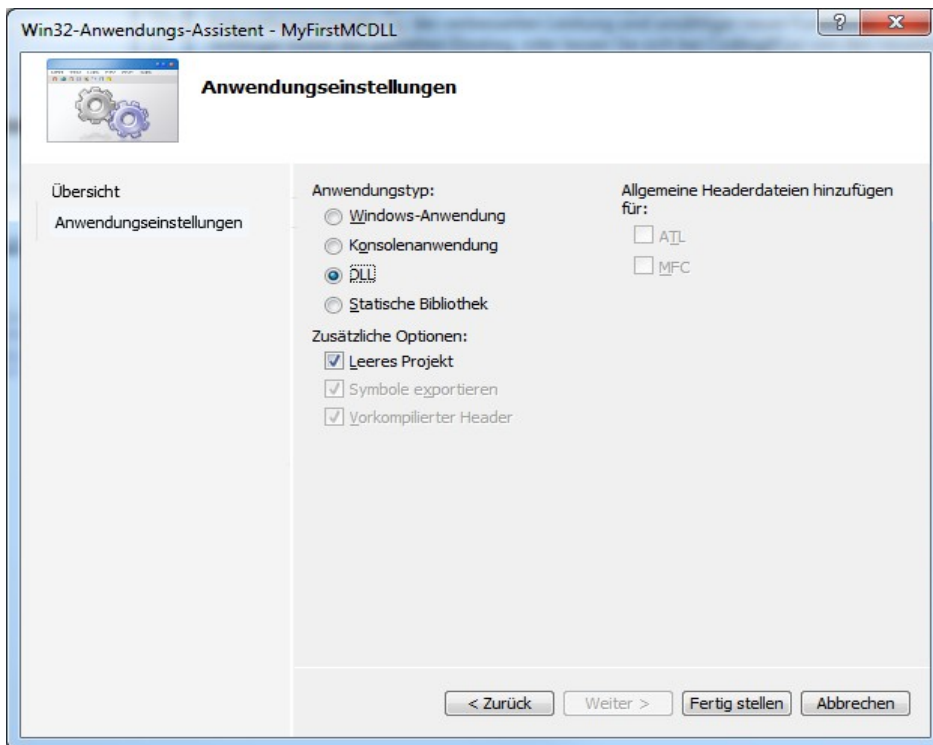
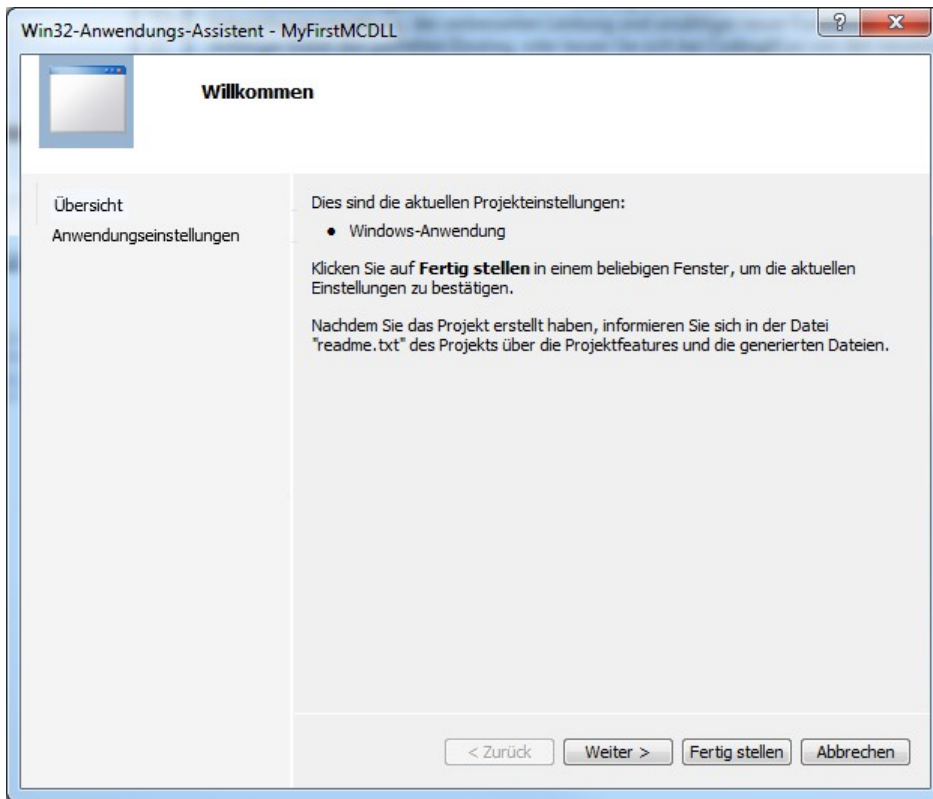


1. Installation



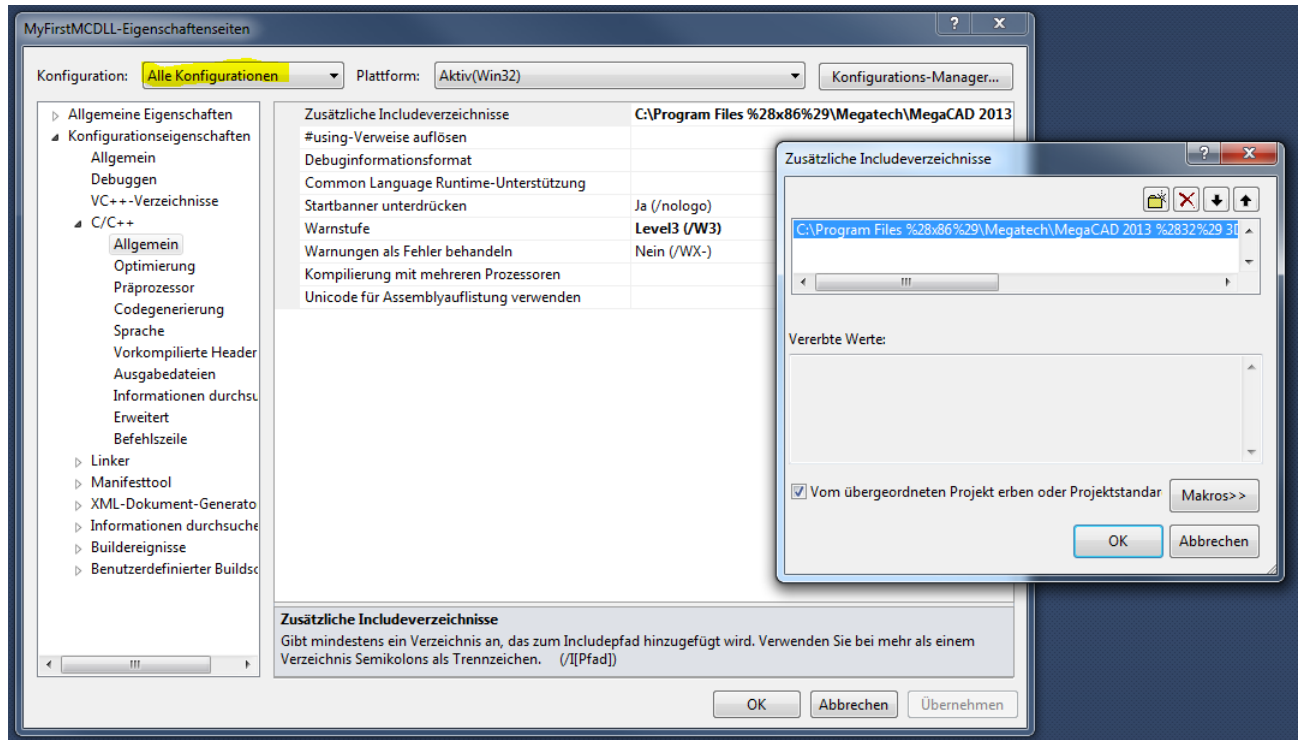
2. Projekt anlegen



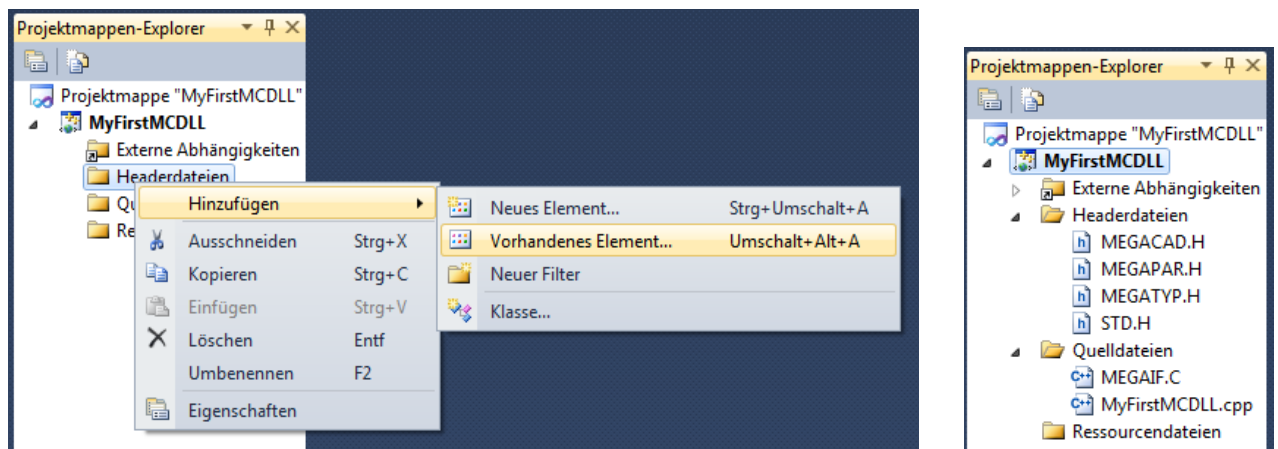


3. Einstellungen

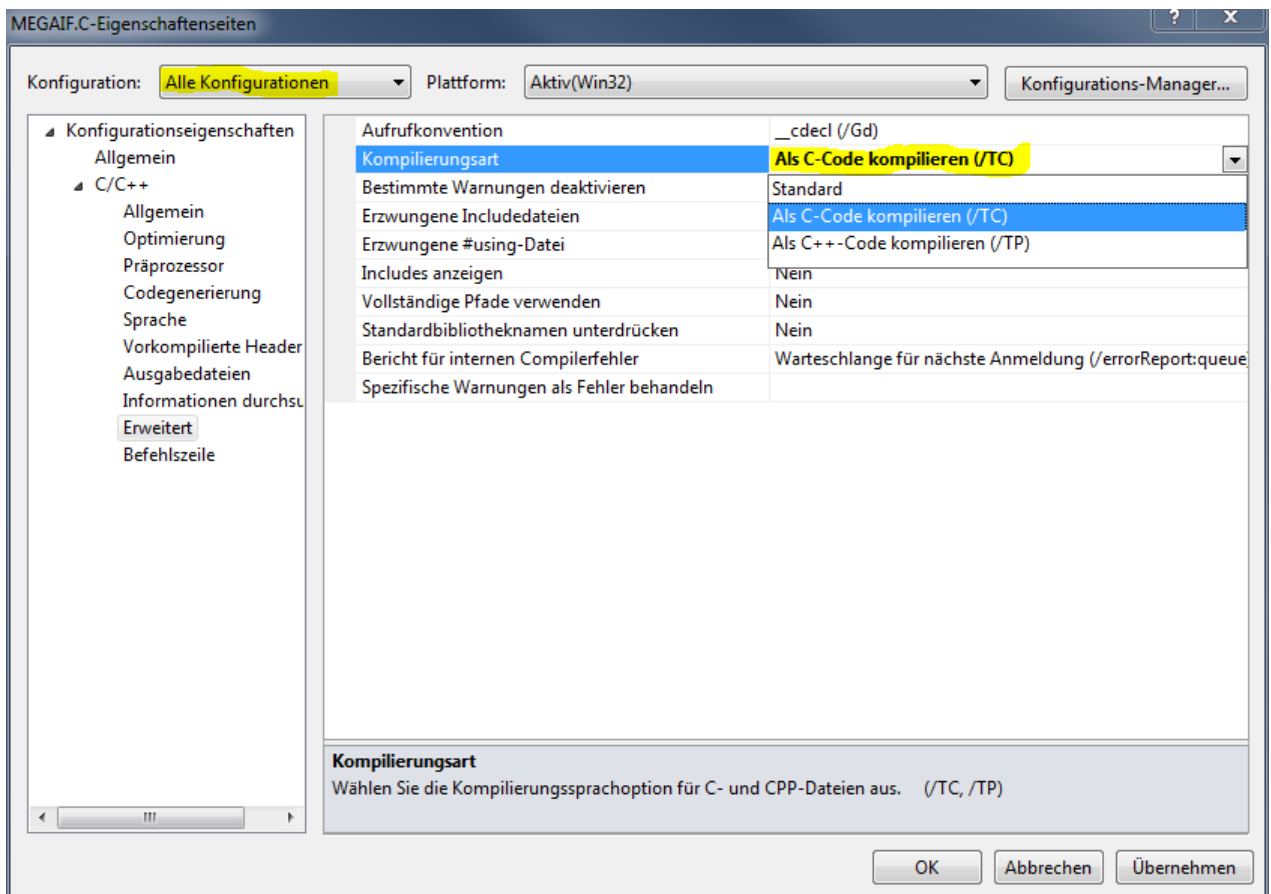
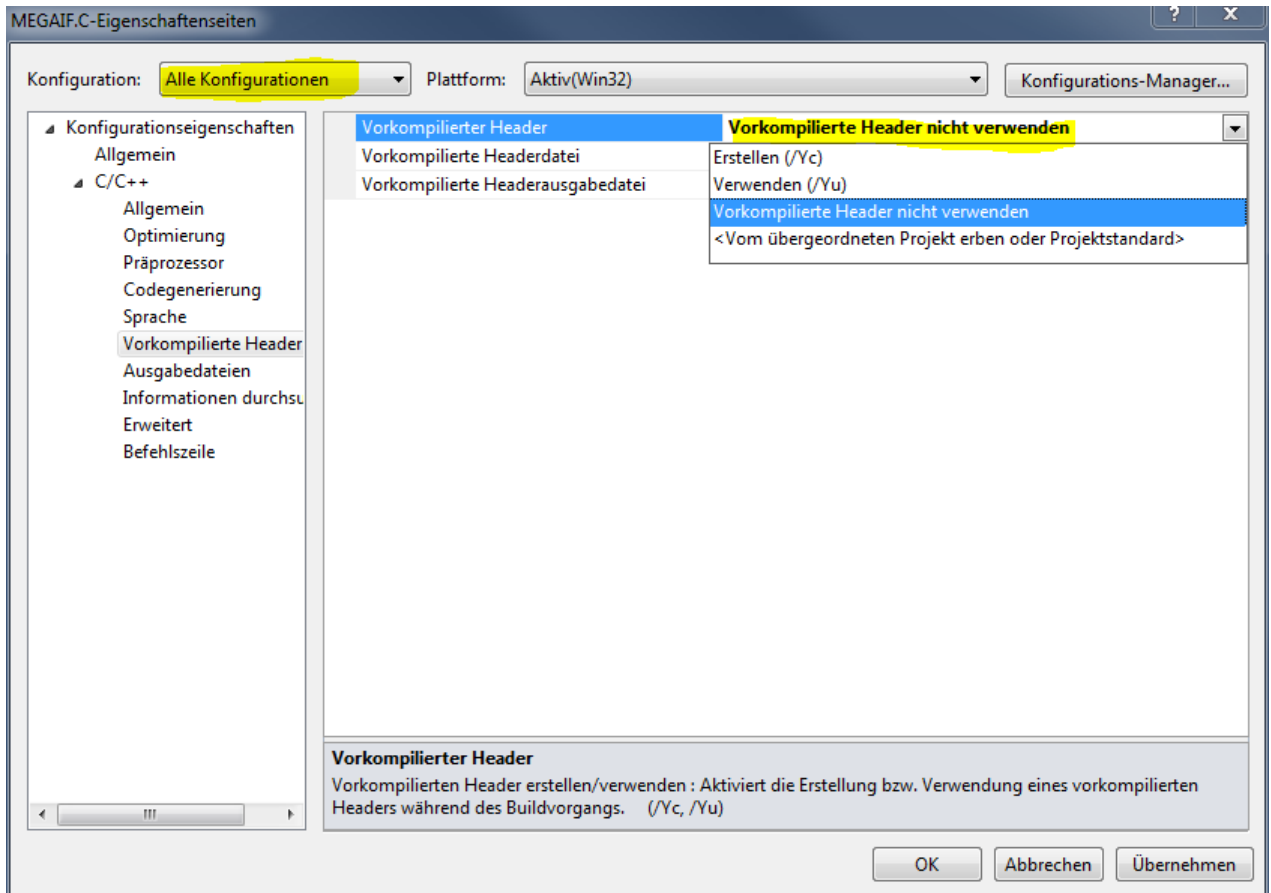
3.1 Global für das gesamte Projekt (Pfad zu den MegaCAD-Dateien)



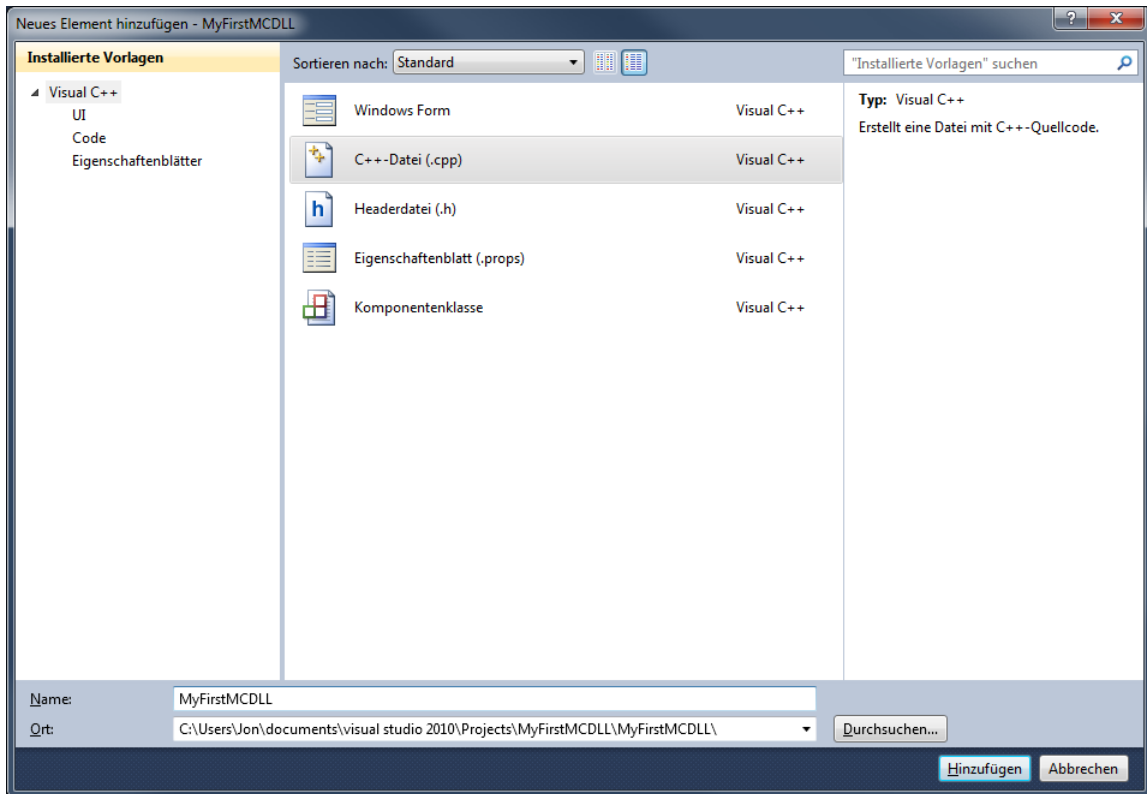
3.2 Header- und Quellcodedateien hinzufügen



3.3 Nur für die Datei „MEGAIF.C“



3.4 Quellcodedatei anlegen



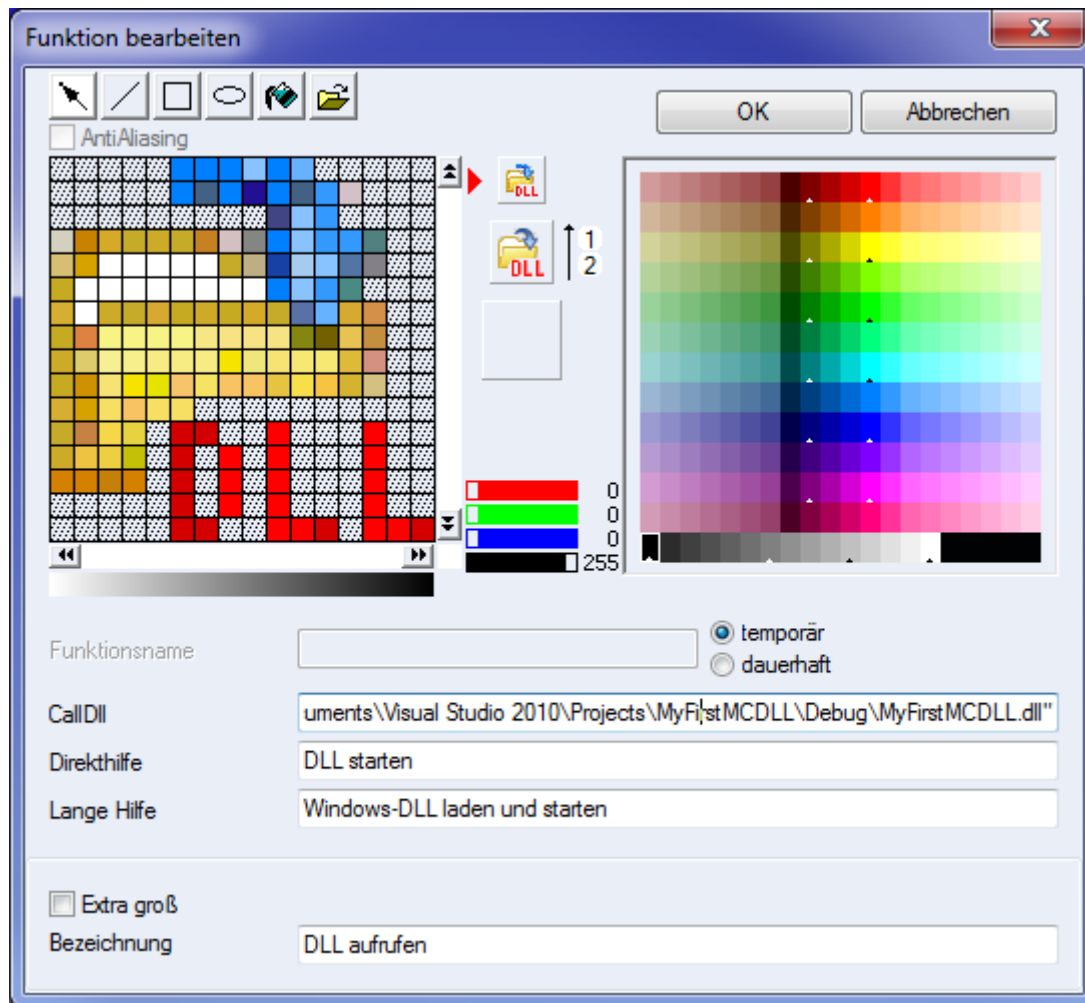
3.5. Code einfügen und Projekt kompilieren

```
// folgende MegaCAD Headerdateien müssen eingebunden werden
#include <STD.H>
#include <MEGATYP.H>
#include <MEGACAD.H>

// MegaMain ist der Einsprungpunkt für MegaCAD in die DLL,
// diese Funktion ist unbedingt erforderlich!!!
extern "C" short MegaMain(
    TCHAR *filename,
    TCHAR *args )
{
    Message(L"Message von der MegaCAD-DLL",L"Zweite Zeile der Message.",NULL,NULL,L"OK",3);

    return(0);
}
```

4. MegaCAD DLL-Aufruf



5. Ergebnis

