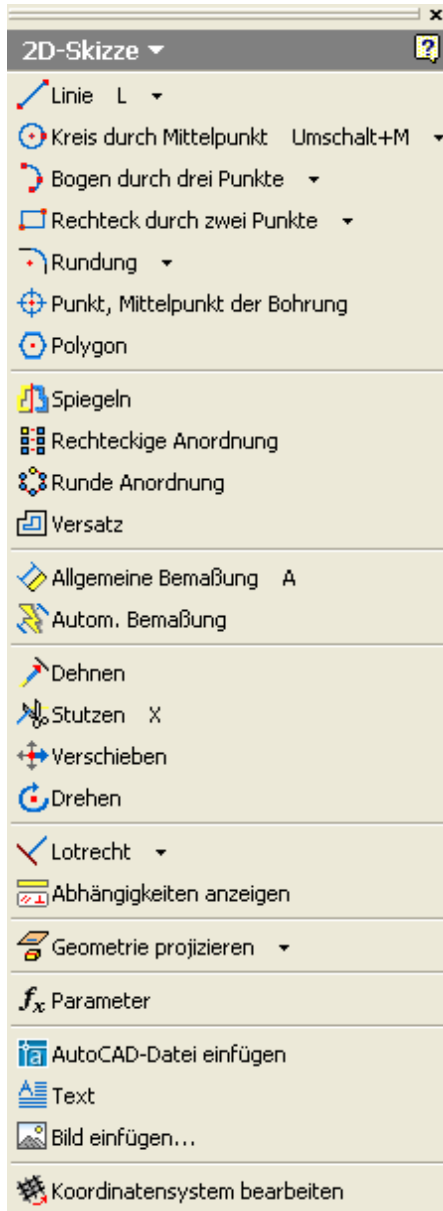


**Inventor 10/11 – Benutzeroberfläche der Bauteilumgebung
im direkten Vergleich.**

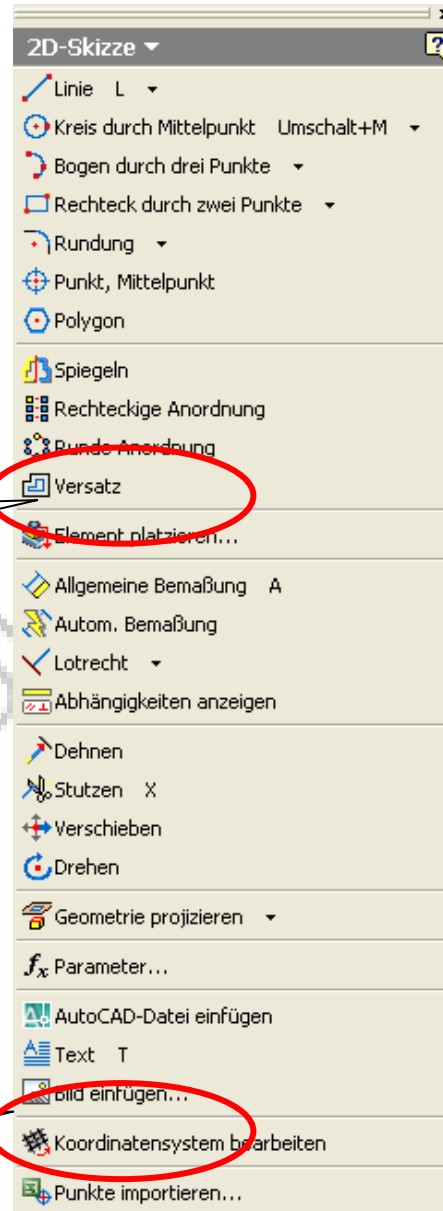
**Dieses Dokument ist unvollständig. Es soll Ihnen
einfach nur dabei helfen einen schnellen
Überblick zu gewinnen.**

**04.04.2006
Version 1.0**

www.cad-ausbildung.de

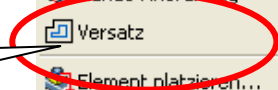


Inventor 10

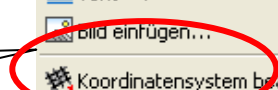


Inventor 11

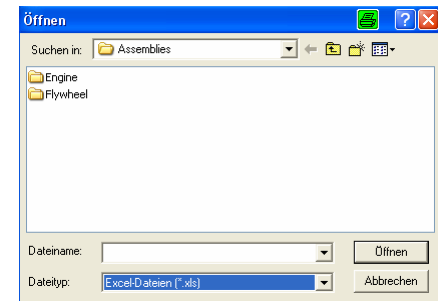
Elemente platzieren



Punkte importieren



Glätten(C2)



Inventor 10

AutoCAD-Datei einfügen

Dateiname: Öffnen

Dateityp: DWG-Dateien (*.dwg) Abbrechen

DWG-Dateien (*.dwg)

Inventor 11

AutoCAD-Datei einfügen

Dateiname: Öffnen

Dateityp: DWG-Dateien (*.dwg) Abbrechen

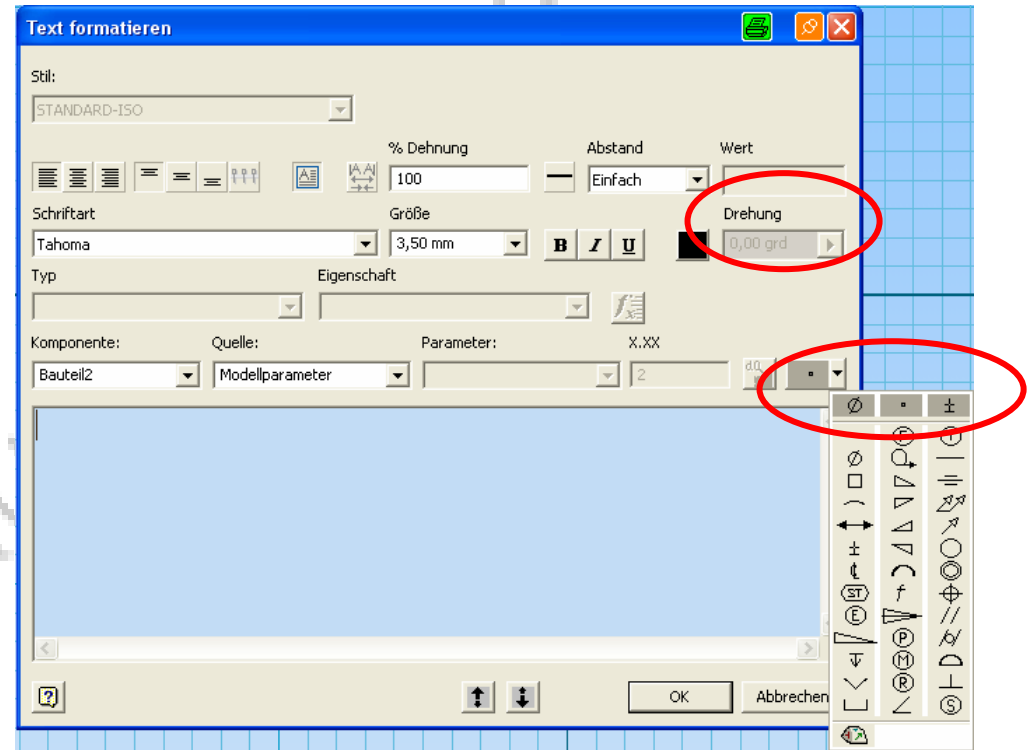
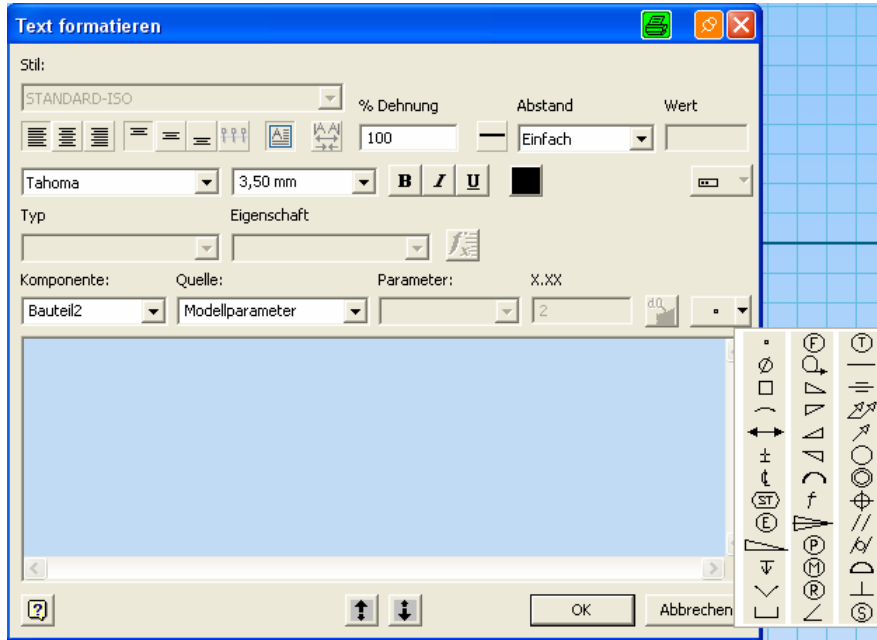
DWG-Dateien (*.dwg)

DXF-Dateien (*.dxf)

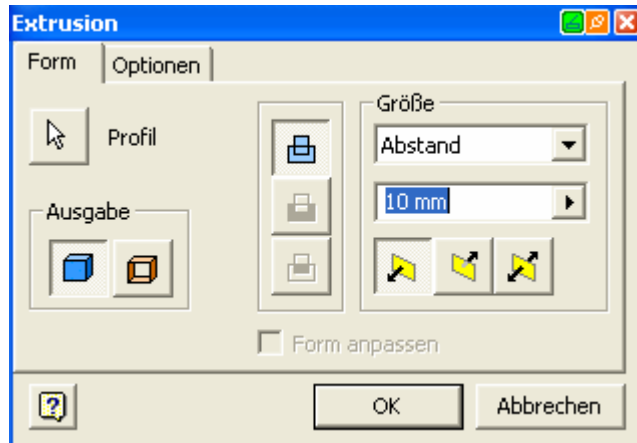
DXF-Format kann importiert werden

Inventor 10

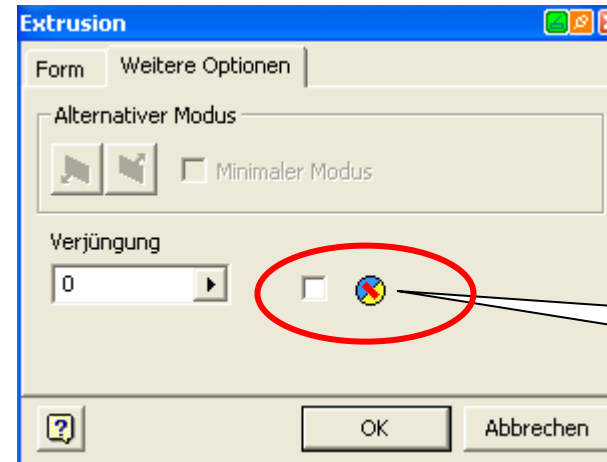
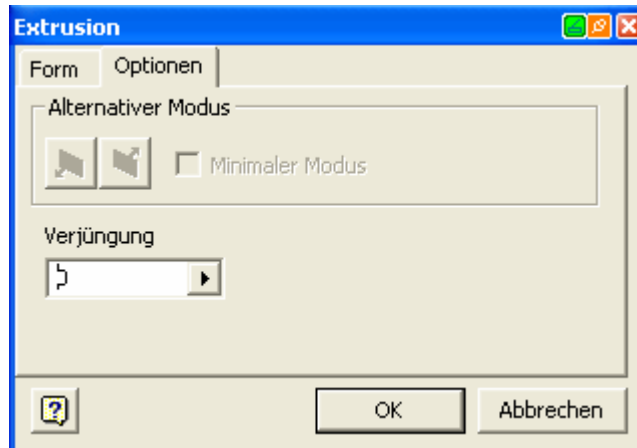
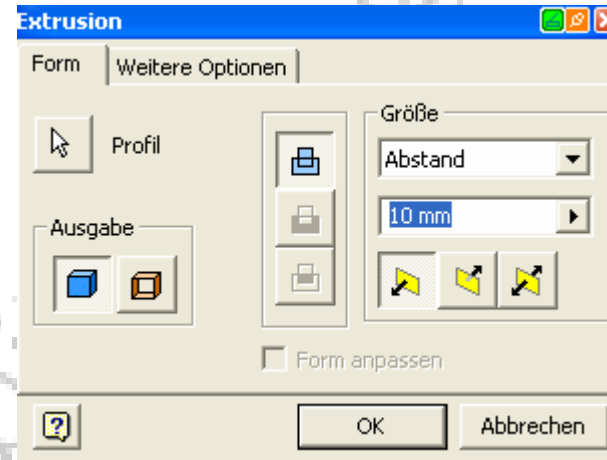
Inventor 11



Inventor 10

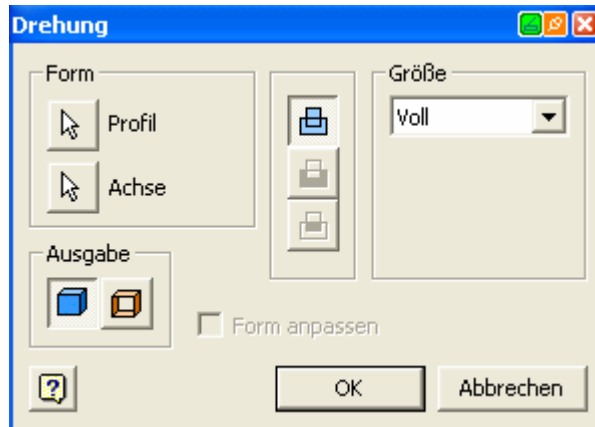


Inventor 11

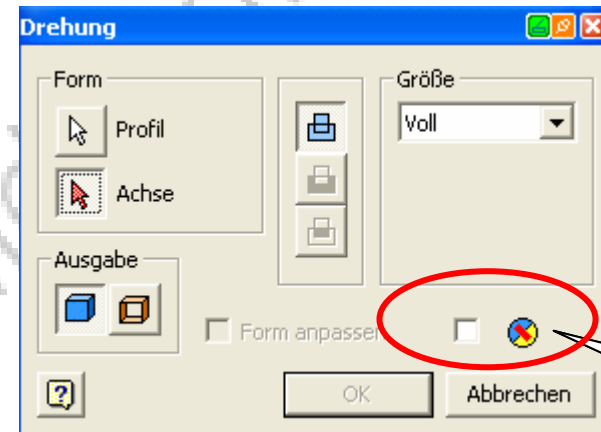


iMates ableiten

Inventor 10



Inventor 11

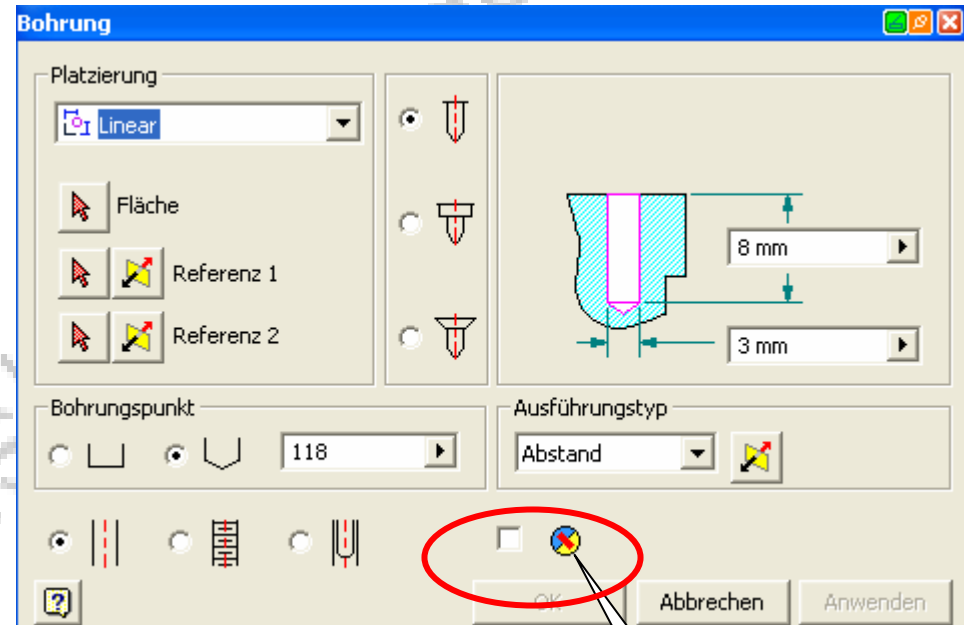
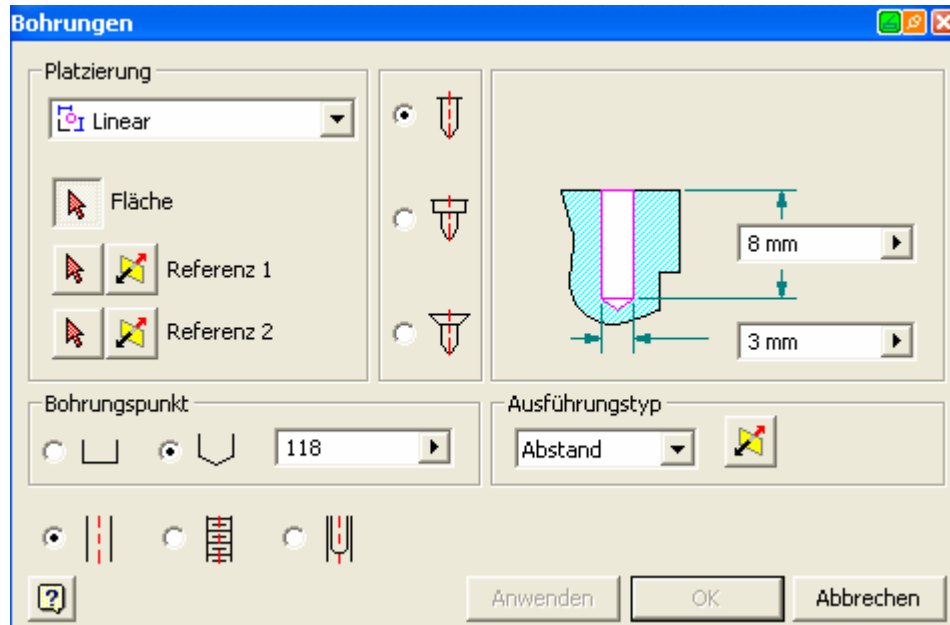


iMates ableiten

www.cad-ausbildung.de

Inventor 10

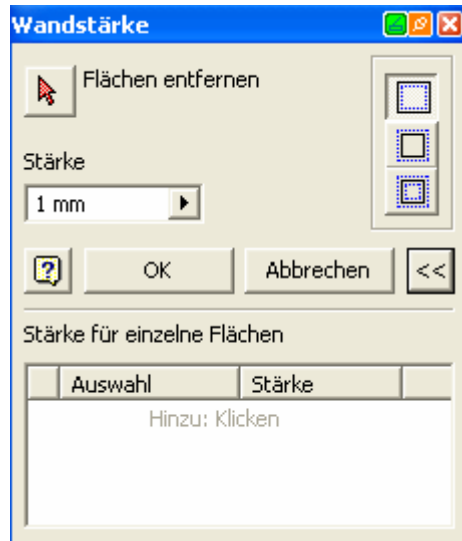
Inventor 11



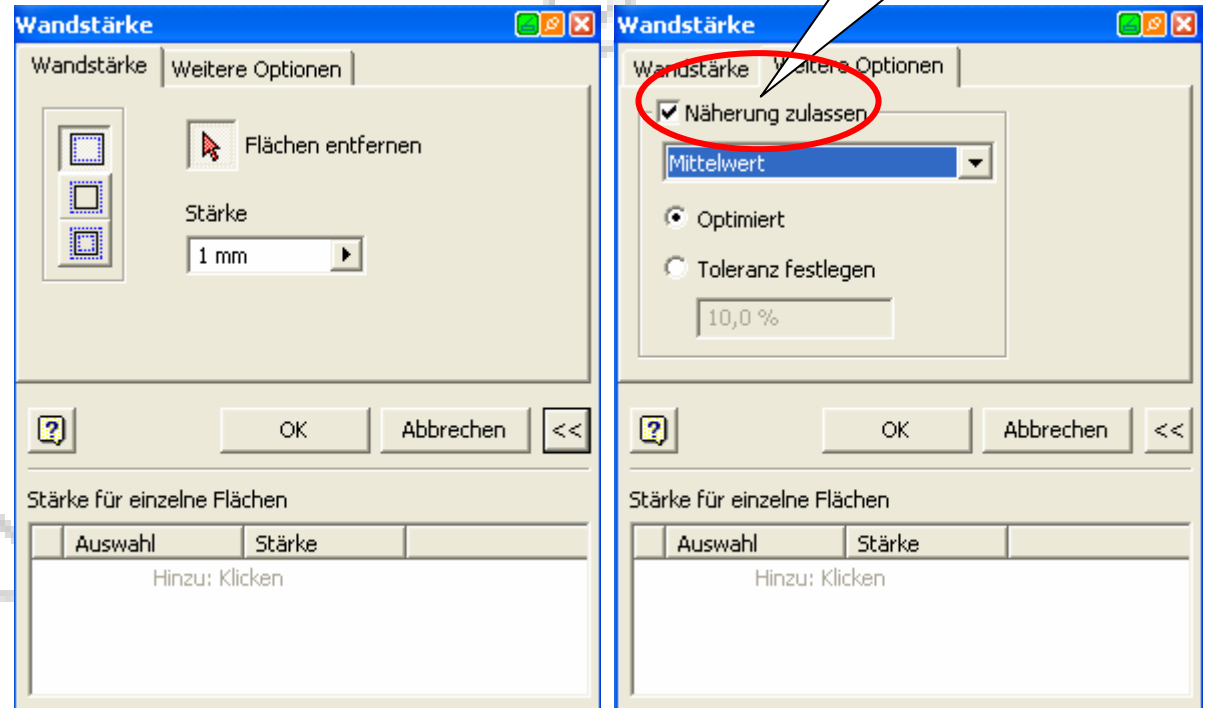
iMates ableiten

www.cad-ausbildung.de

Inventor 10

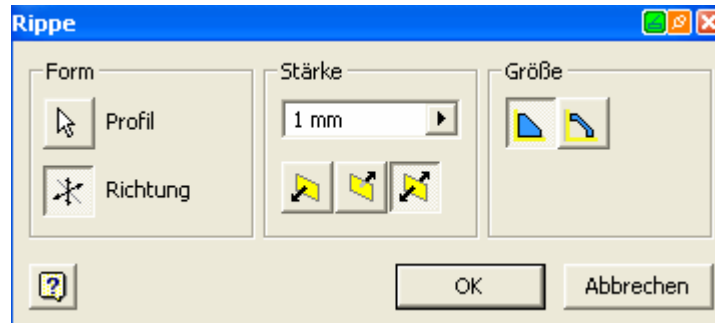


Inventor 11

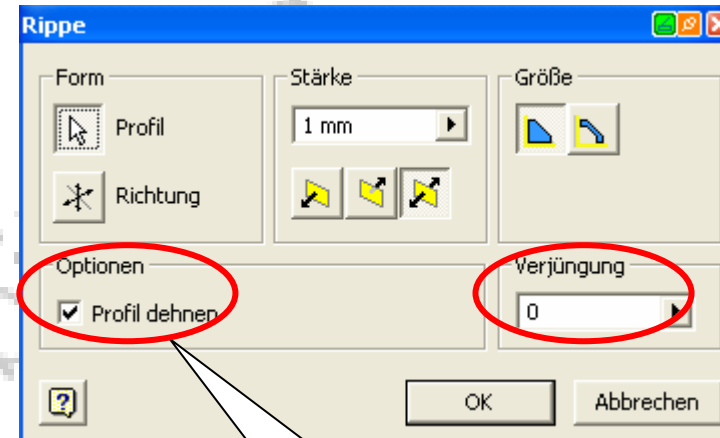


www.cad

Inventor 10



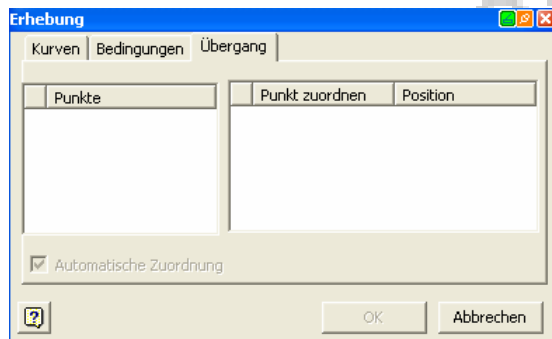
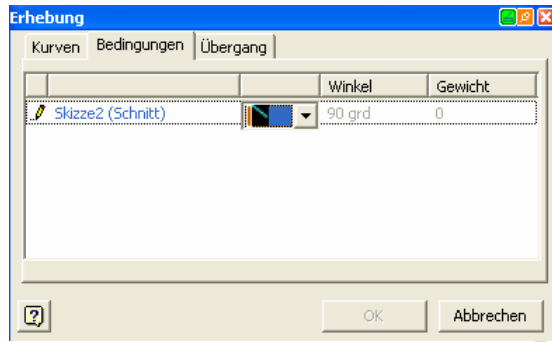
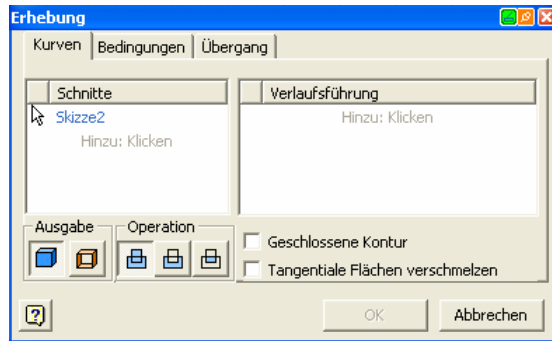
Inventor 11



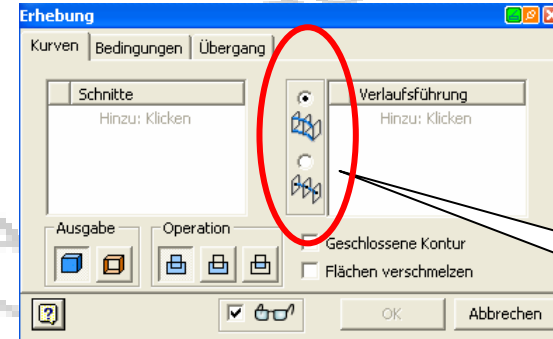
Profil dehnen/Verjüngung

www.cad-ausbildung.de

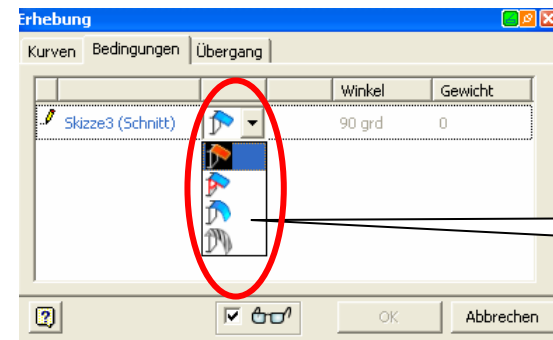
Inventor 10



Inventor 11

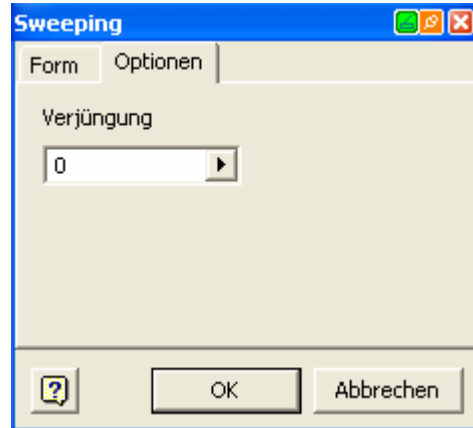
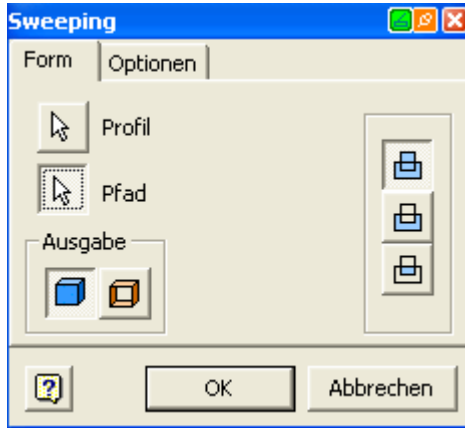


Voransicht/Verlaufsführung

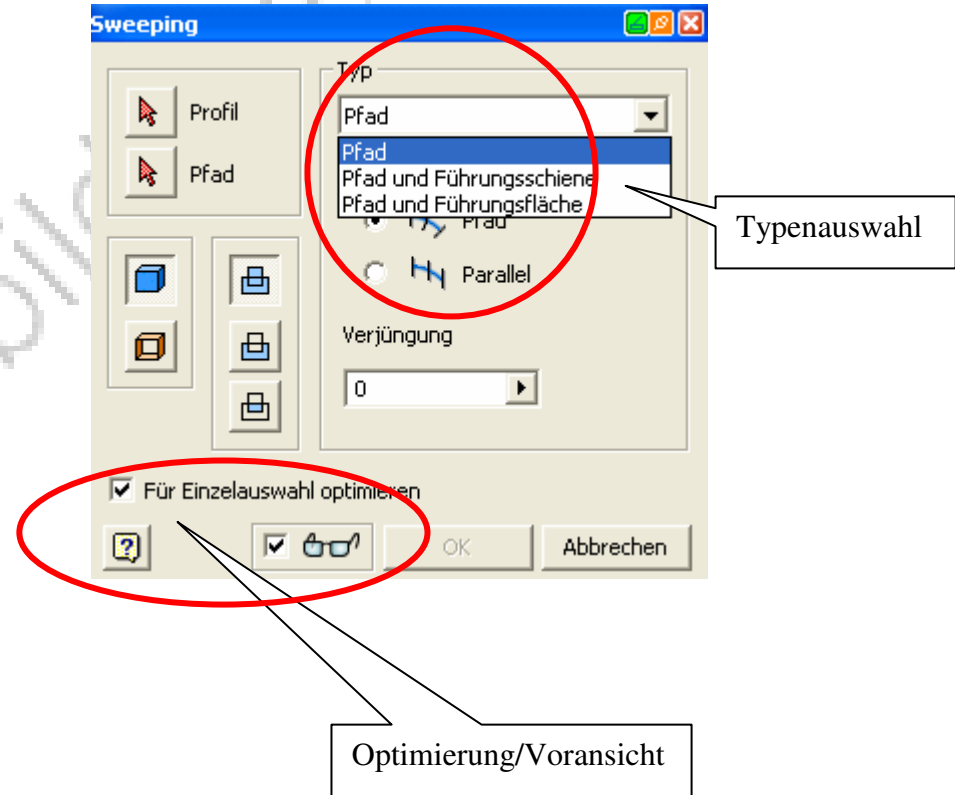


Tangential/Geglättet

Inventor 10

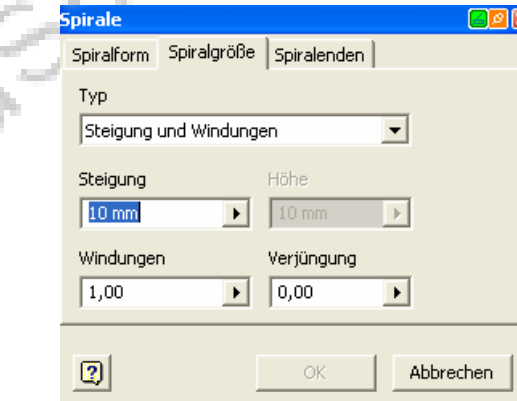
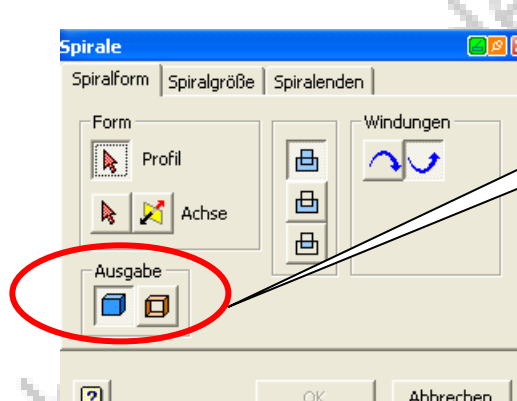
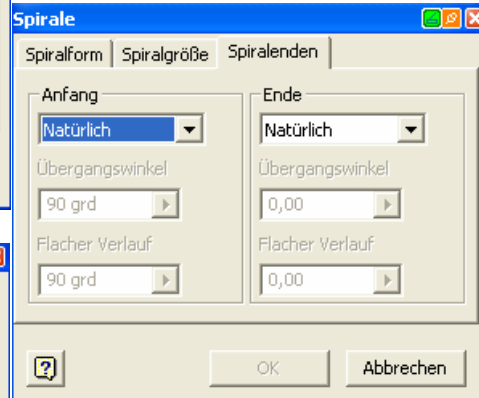
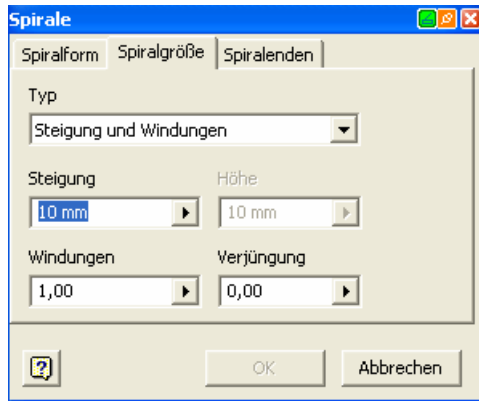
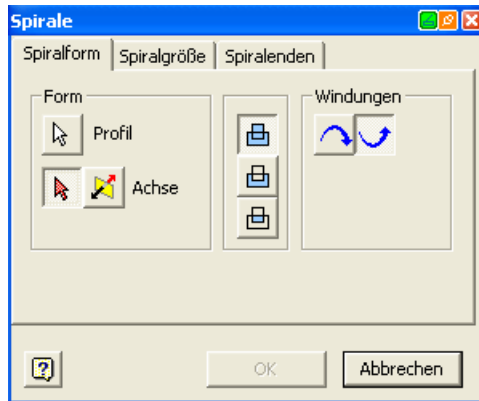


Inventor 11



Inventor 10

Inventor 11



www.cad-ausbildung.de

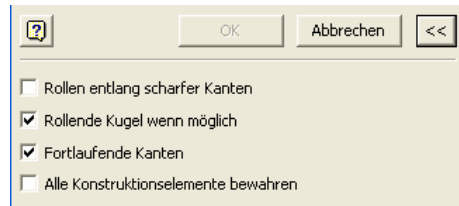
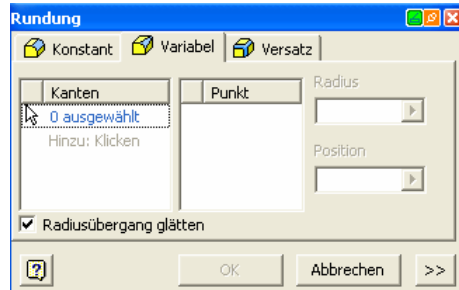
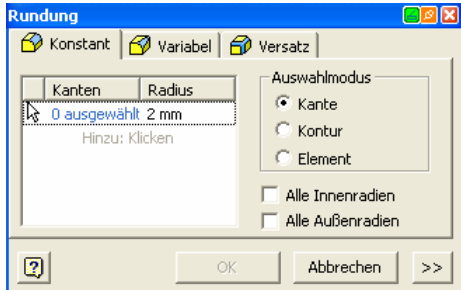
Inventor 10



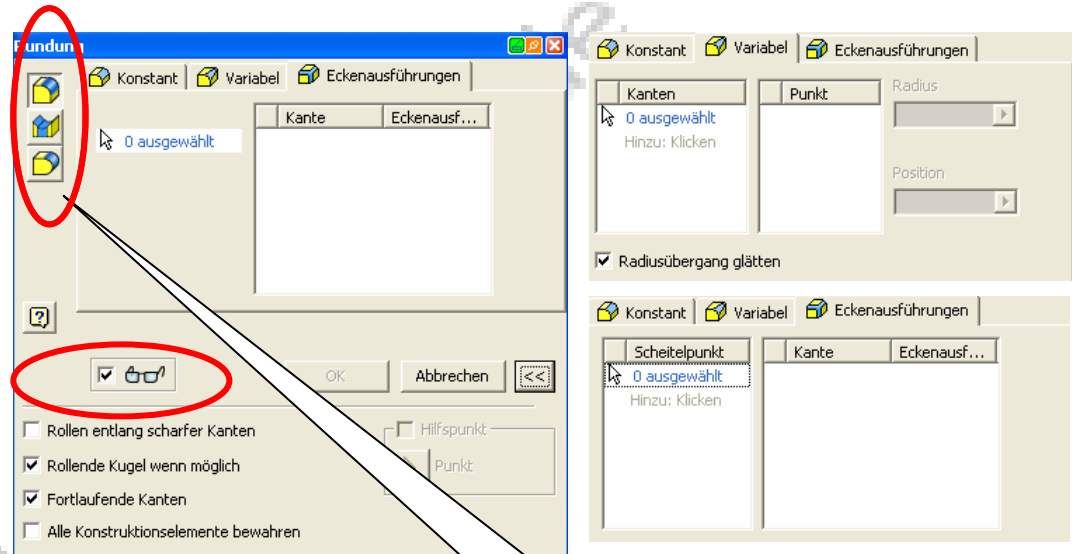
Inventor 11



Inventor 10



Inventor 11



Kantenabrundung
Flächenabrundung
Volle Abrundung
Vorsicht

www.cad-au

Inventor 10



Inventor 11



Inventor 10



Inventor 11



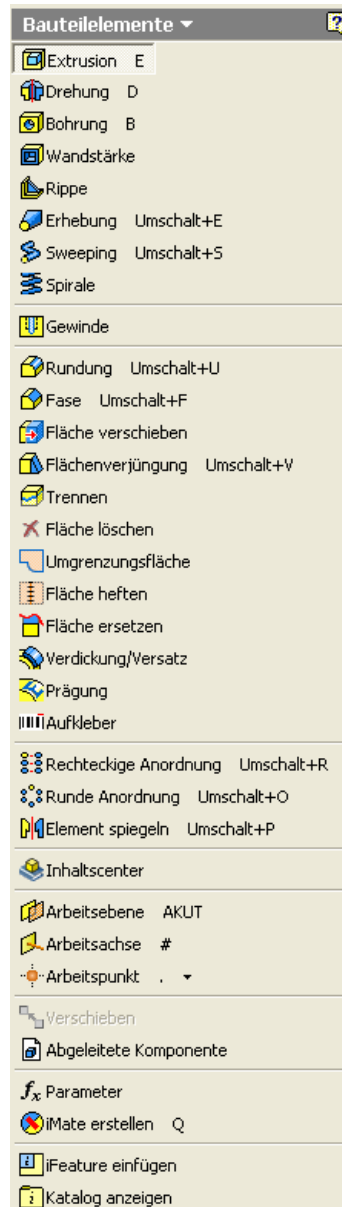
www.cad-ausbildung.de

Inventor 10

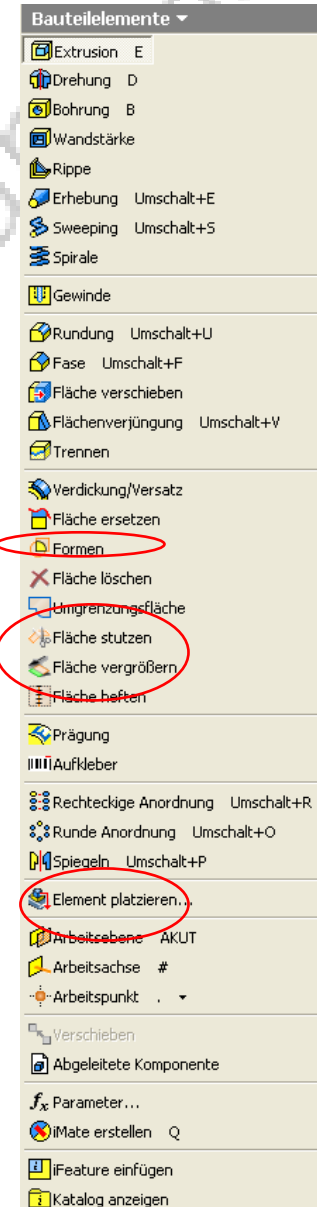
Inventor 11



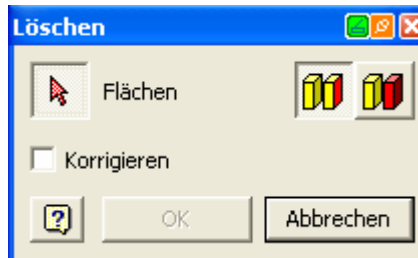
Inventor 10



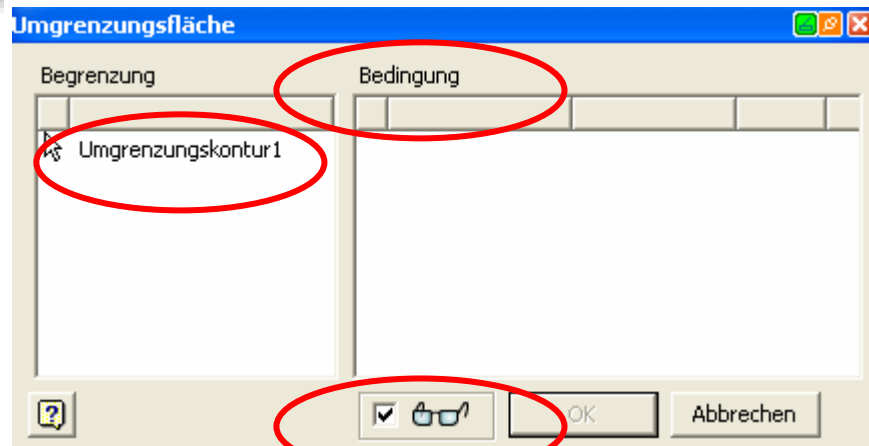
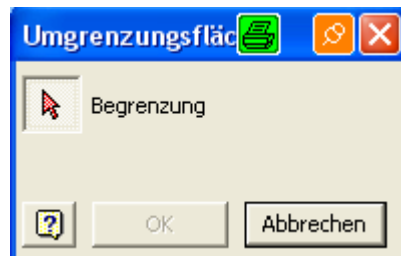
Inventor 11



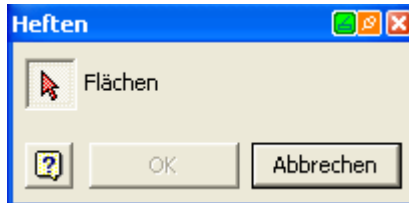
Inventor 10



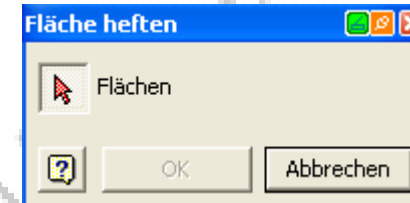
Inventor 11



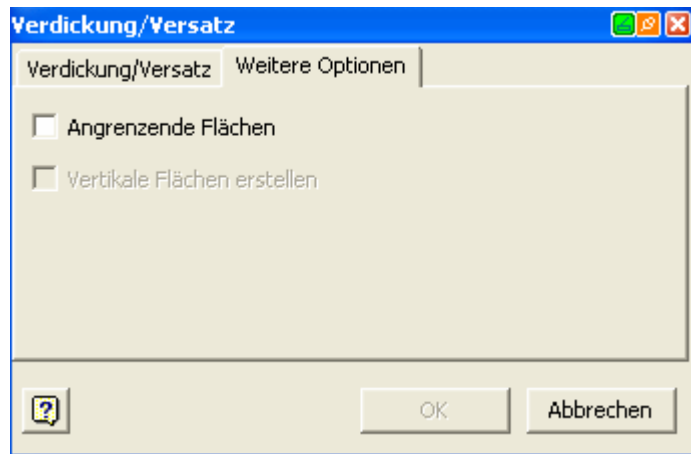
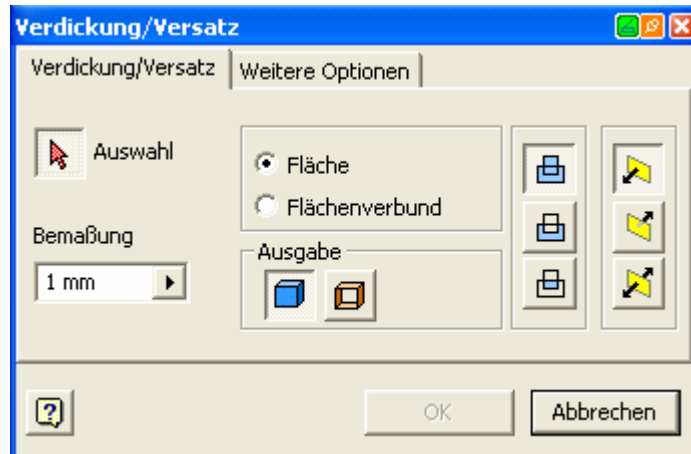
Inventor 10



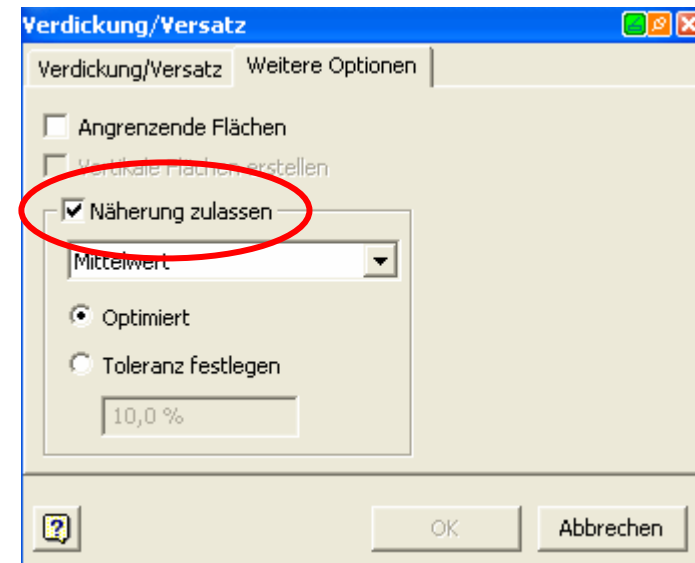
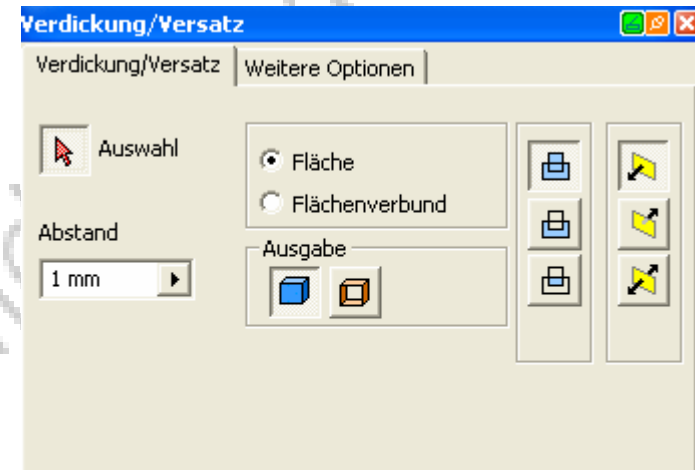
Inventor 11



Inventor 10

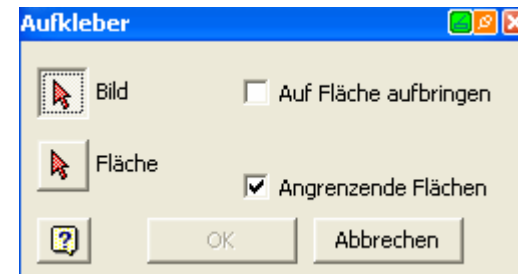
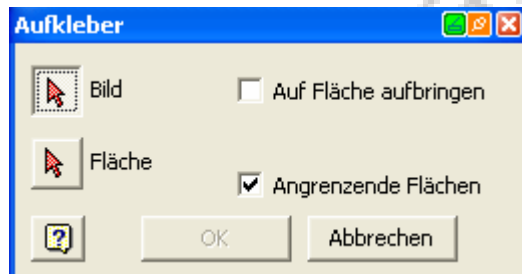
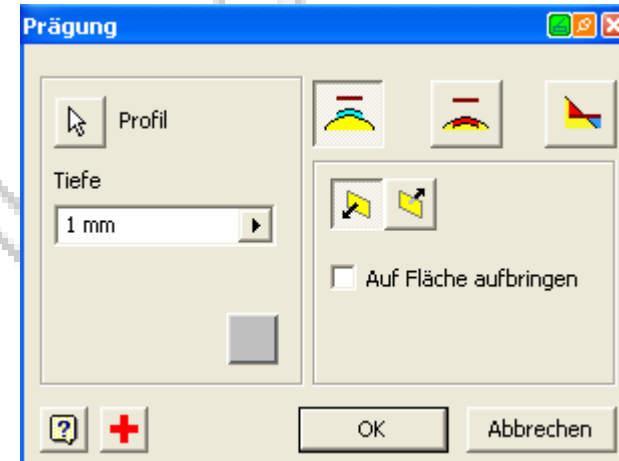
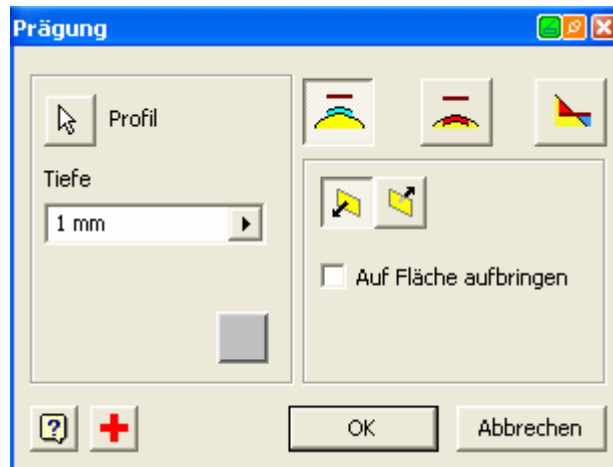


Inventor 11



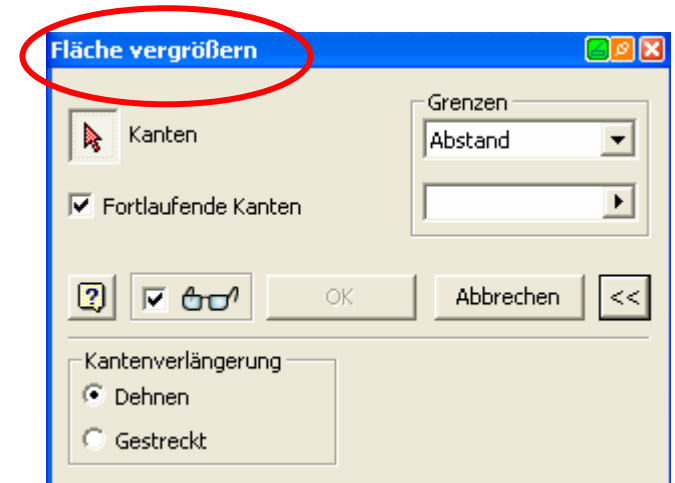
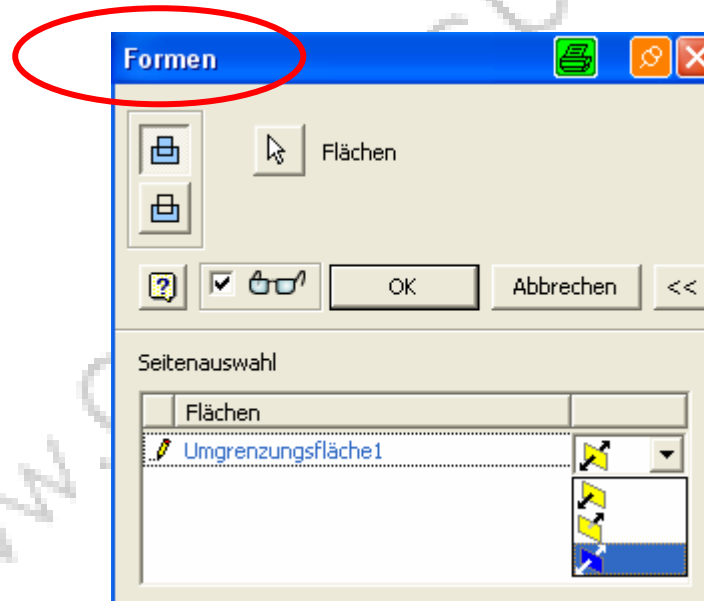
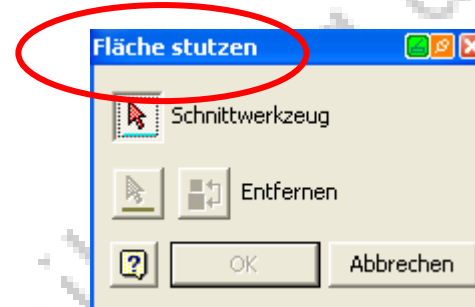
Inventor 10

Inventor 11



Inventor 10

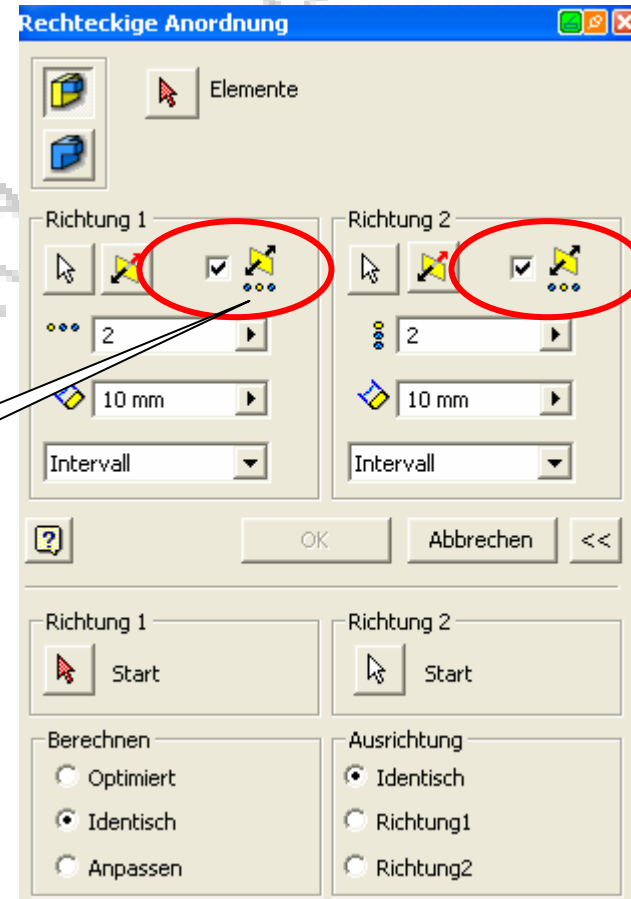
NEU im Inventor 11



Inventor 10

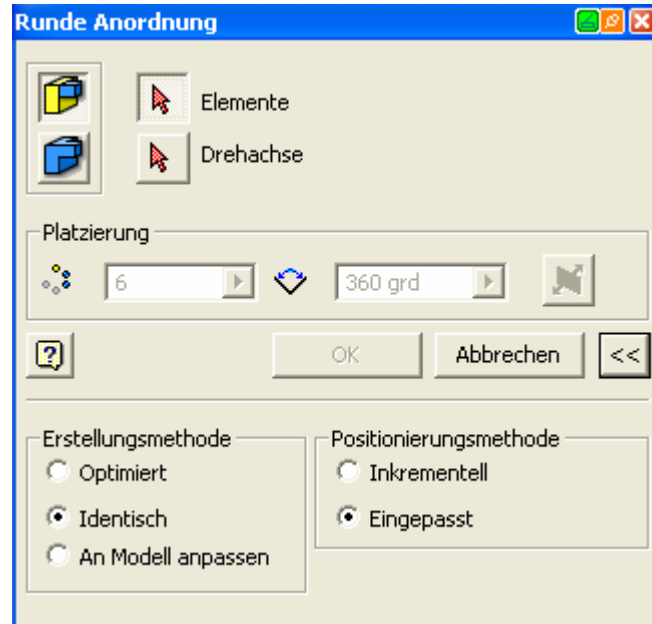


Inventor 11



Mittlebene

Inventor 10

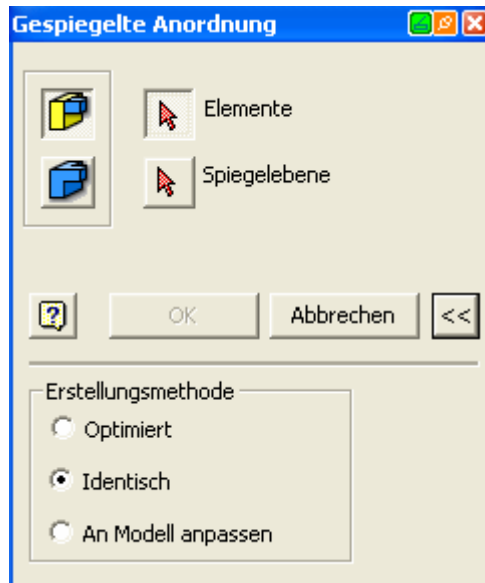


Inventor 11



Mittalebene

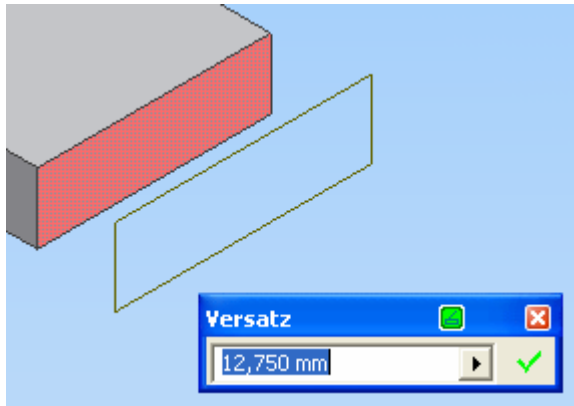
Inventor 10



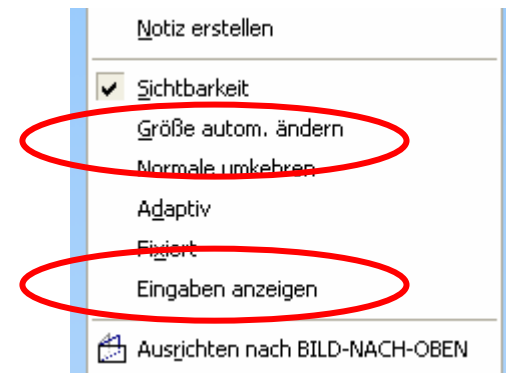
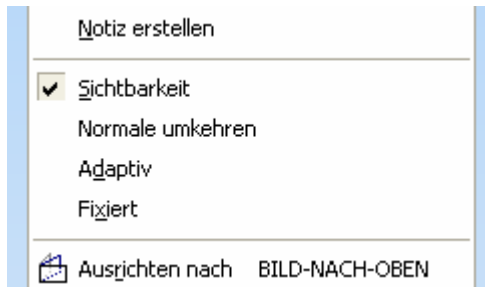
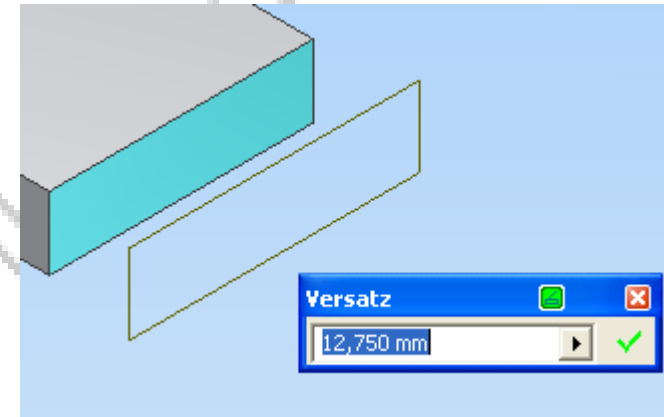
Inventor 11



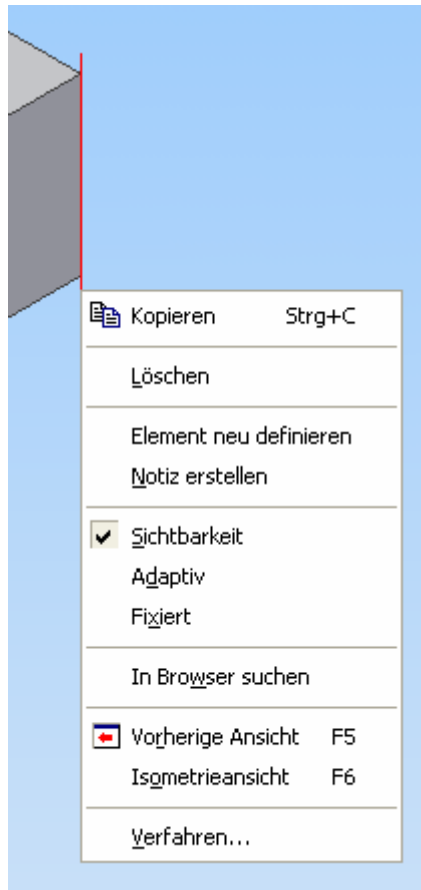
Inventor 10 - Arbeitsebenen



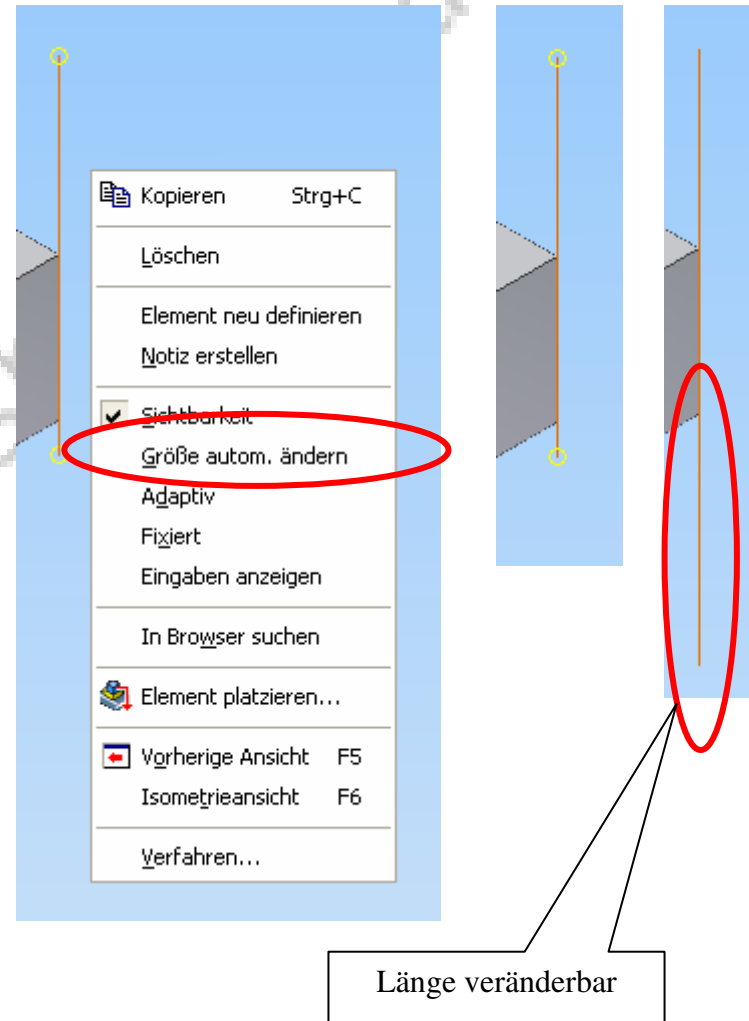
Inventor 11 - Arbeitsebenen



Inventor 10 - Arbeitsachsen



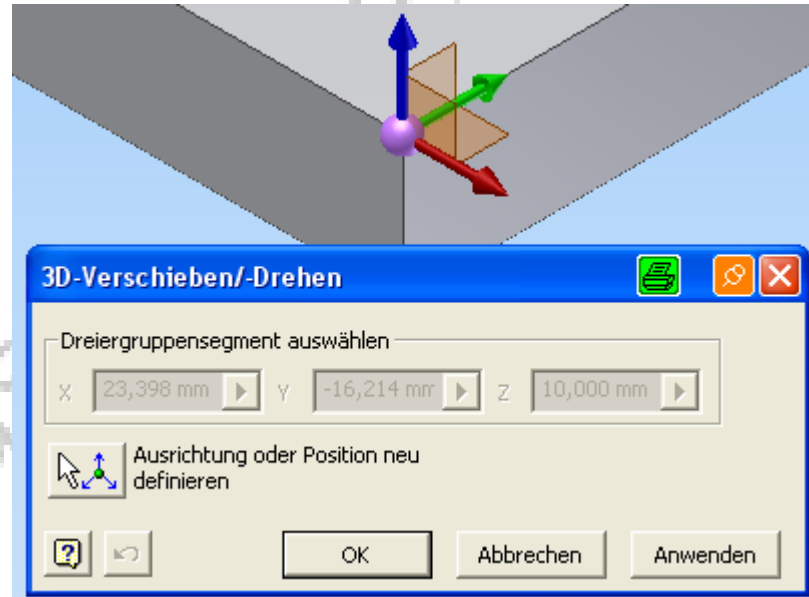
Inventor 11 - Arbeitsachsen



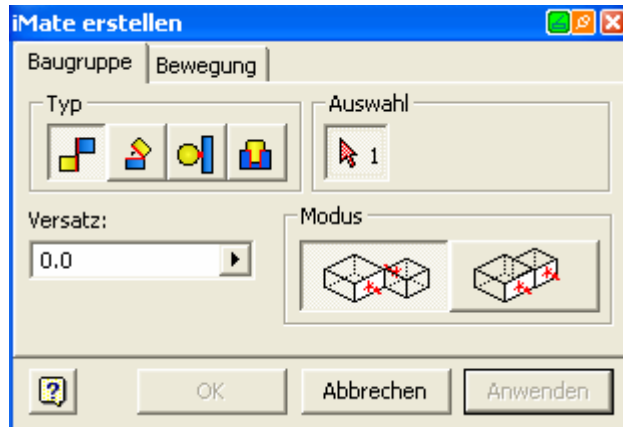
Inventor 10 – fester Arbeitspunkt



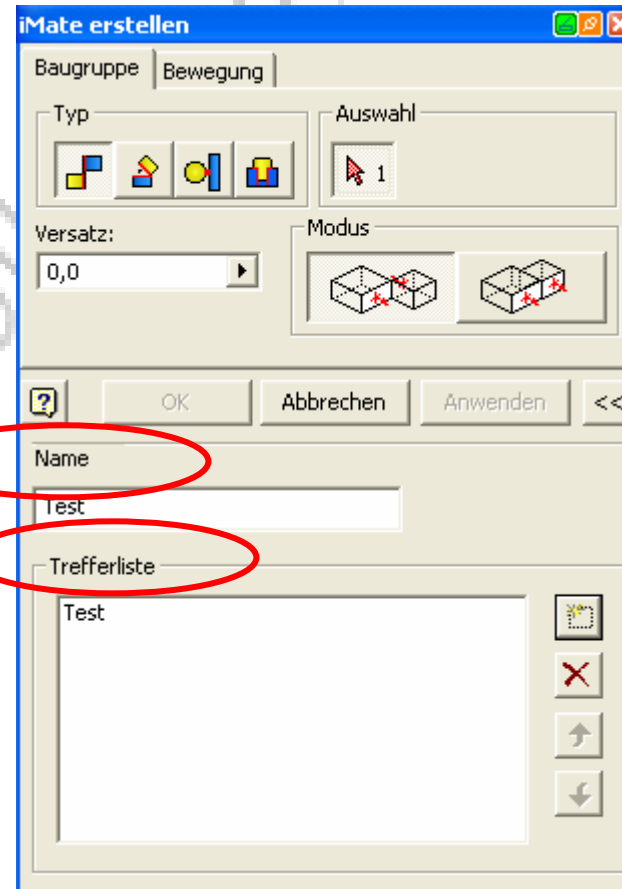
Inventor 11 – fester Arbeitspunkt



Inventor 10



Inventor 11



Inventor 10

Inventor 11



www.cad-ausbildung.de

Diese Auflistung ist noch unvollständig. Wenn Ihr noch Tipps, oder Ergänzungen habt, dann sendet mir ein E-Mail.
Das Dokument wird dann wieder aktualisiert und bereitgestellt.

Viel Spaß beim testen der neuen Funktionen!

www.cad-ausbildung.de