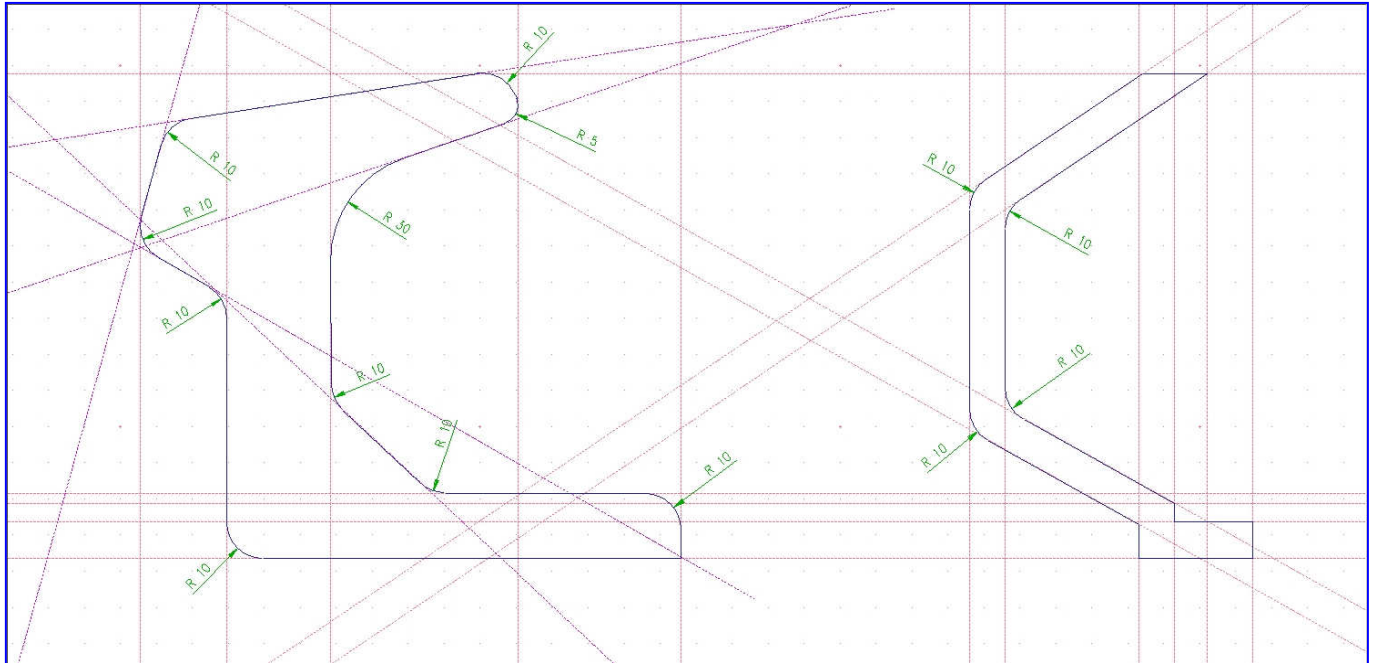
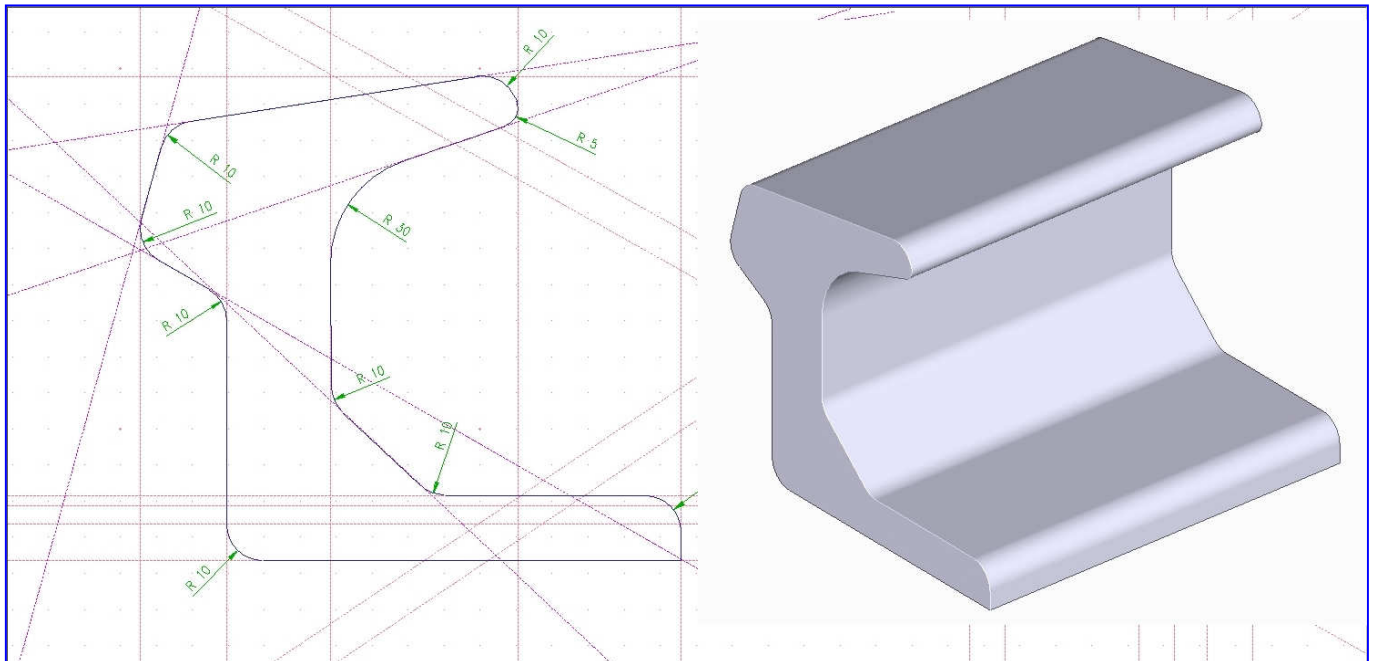


Gemeinsames Volumen

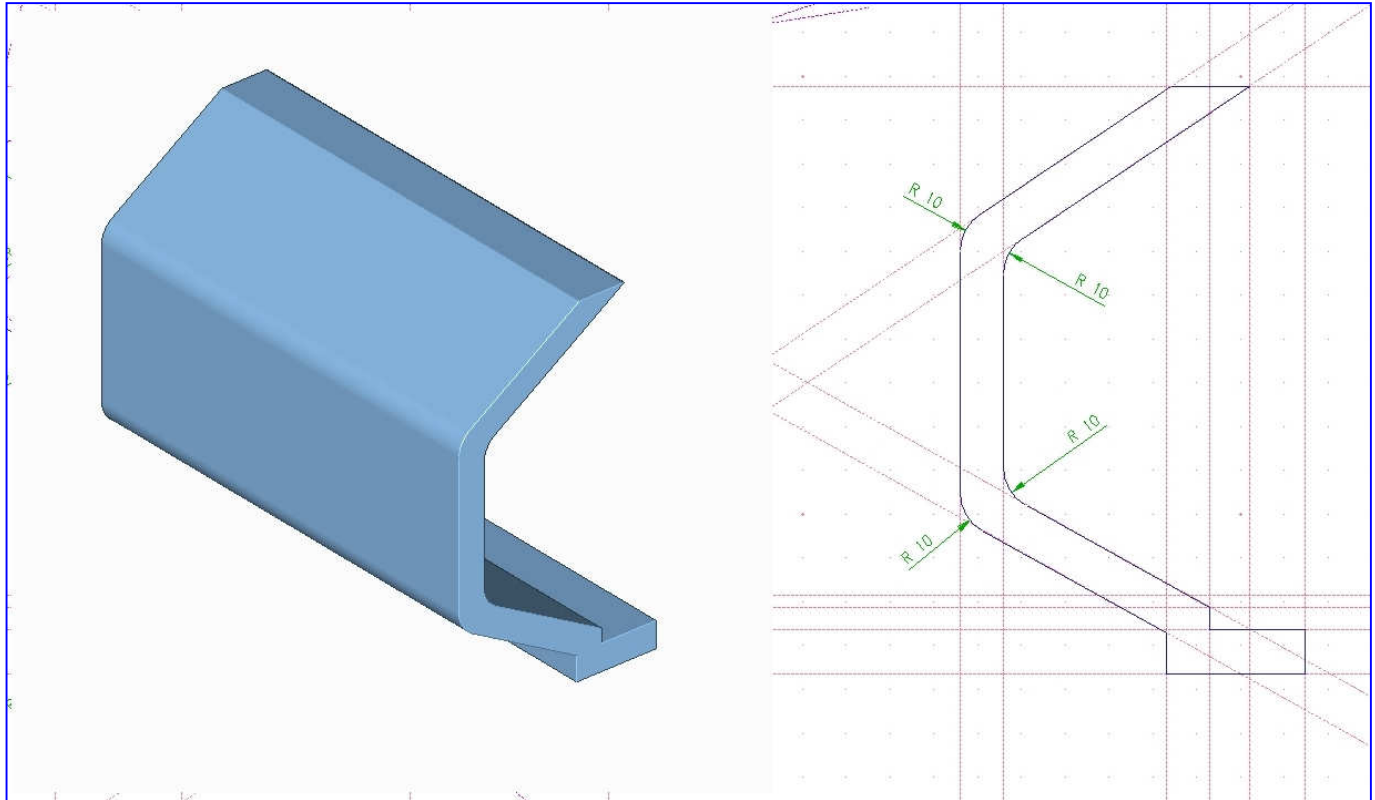
Boolesche-Funktion: SCHNITTMENGE



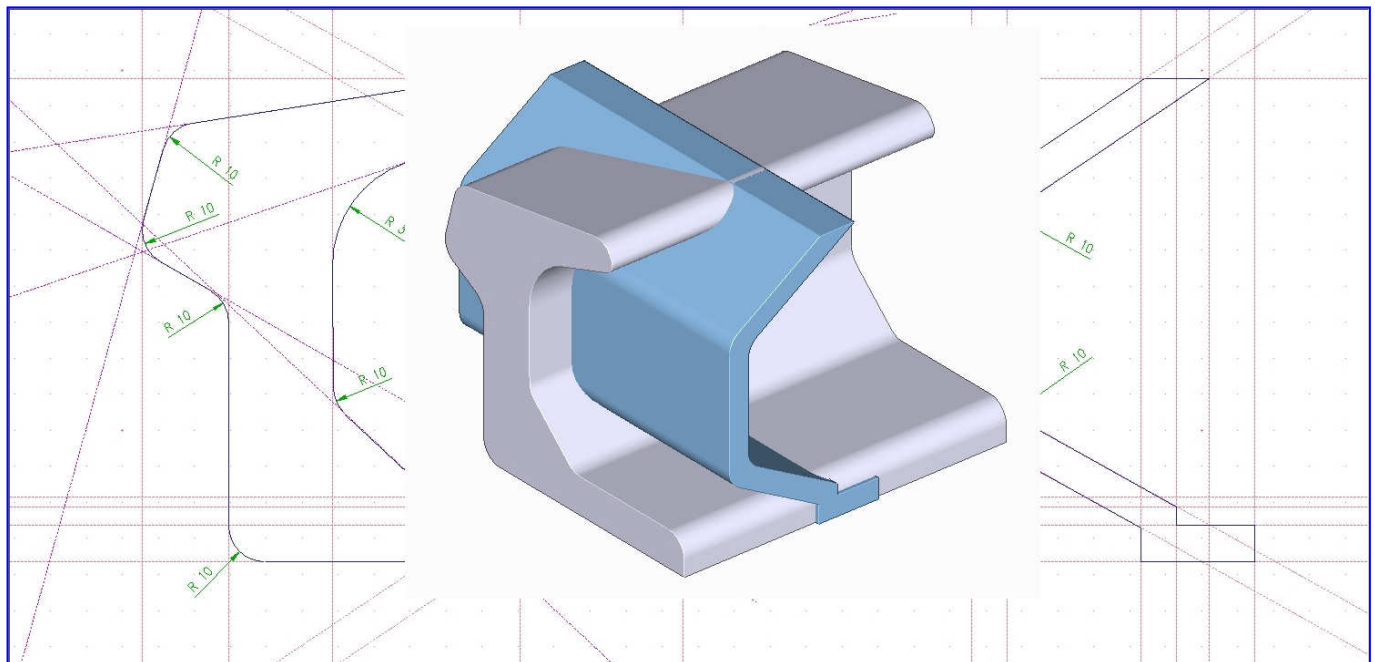
1.Extrusion.....



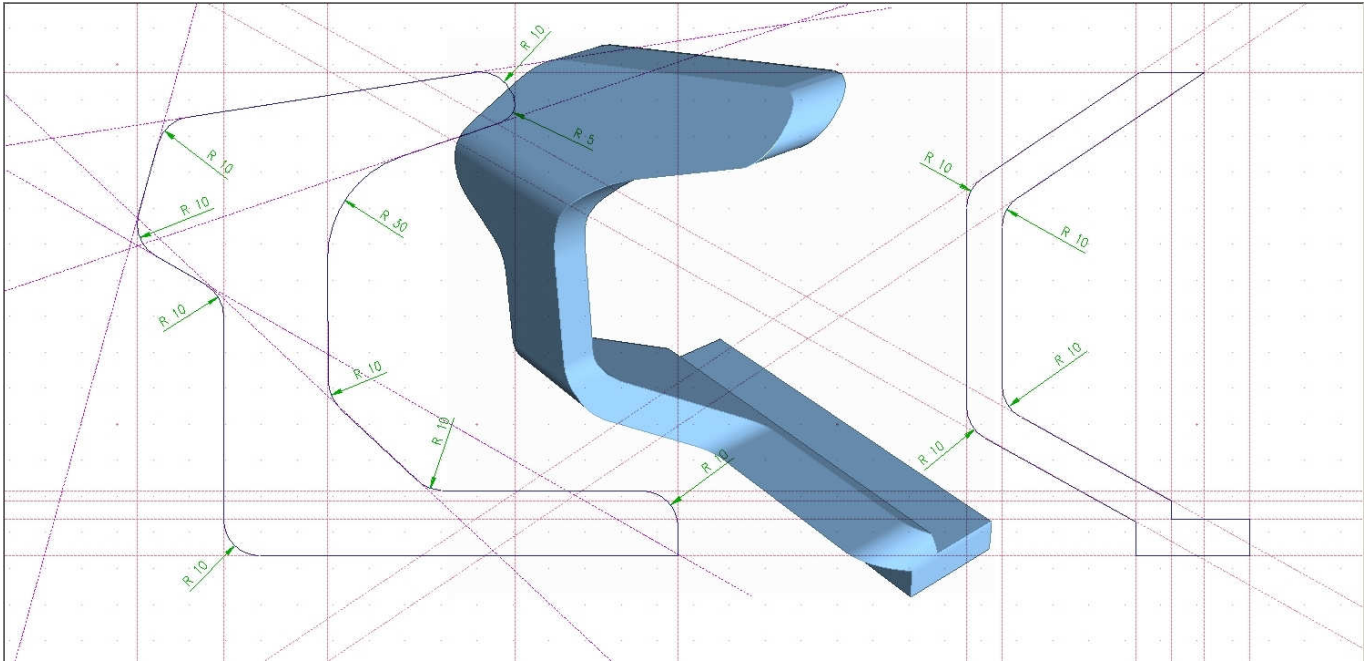
2. Extrusion.....



Volumen (Solids) wählen.....



Fertig ist das „Apparäte“
(..noch notwendige Bohrungen habe ich der besseren Übersicht weggelassen)



Automatische 2D-Ableitung aus 3D.....

