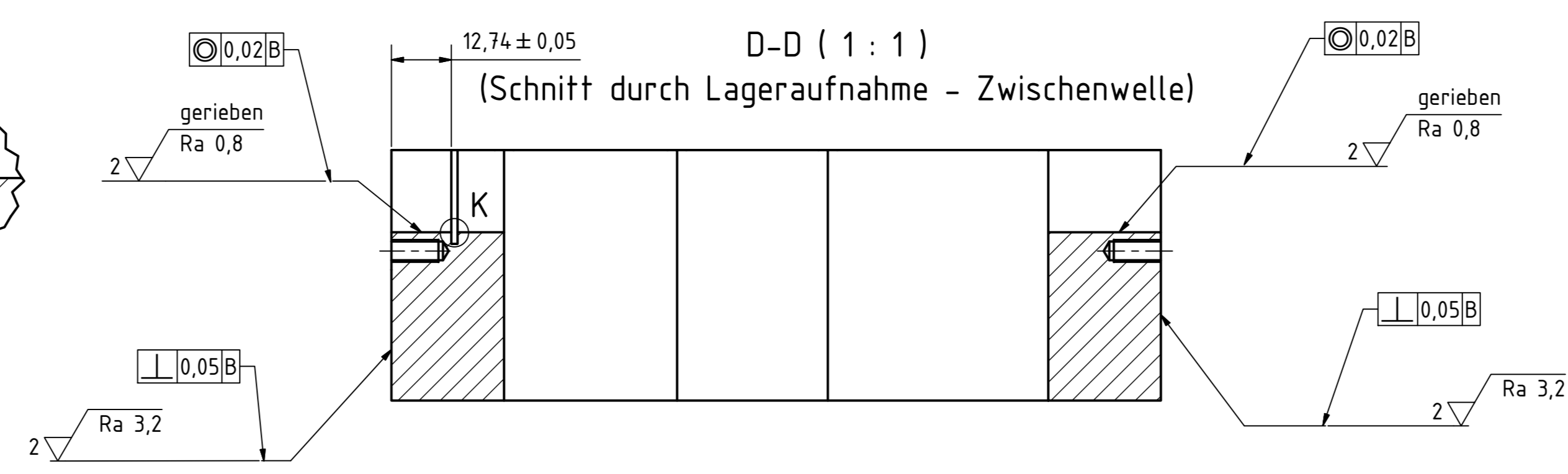
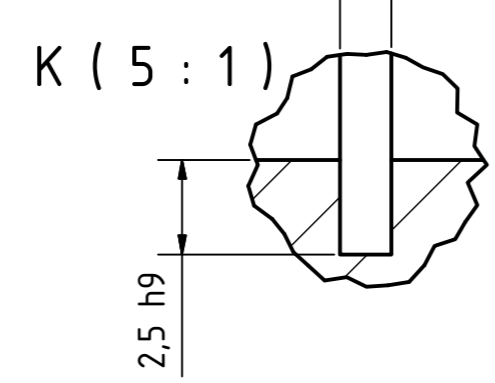
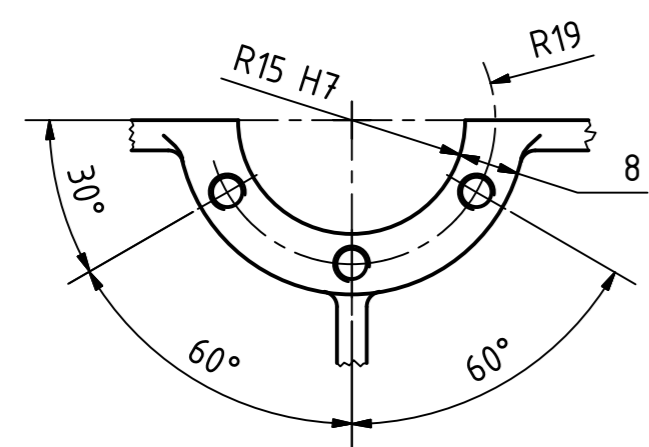
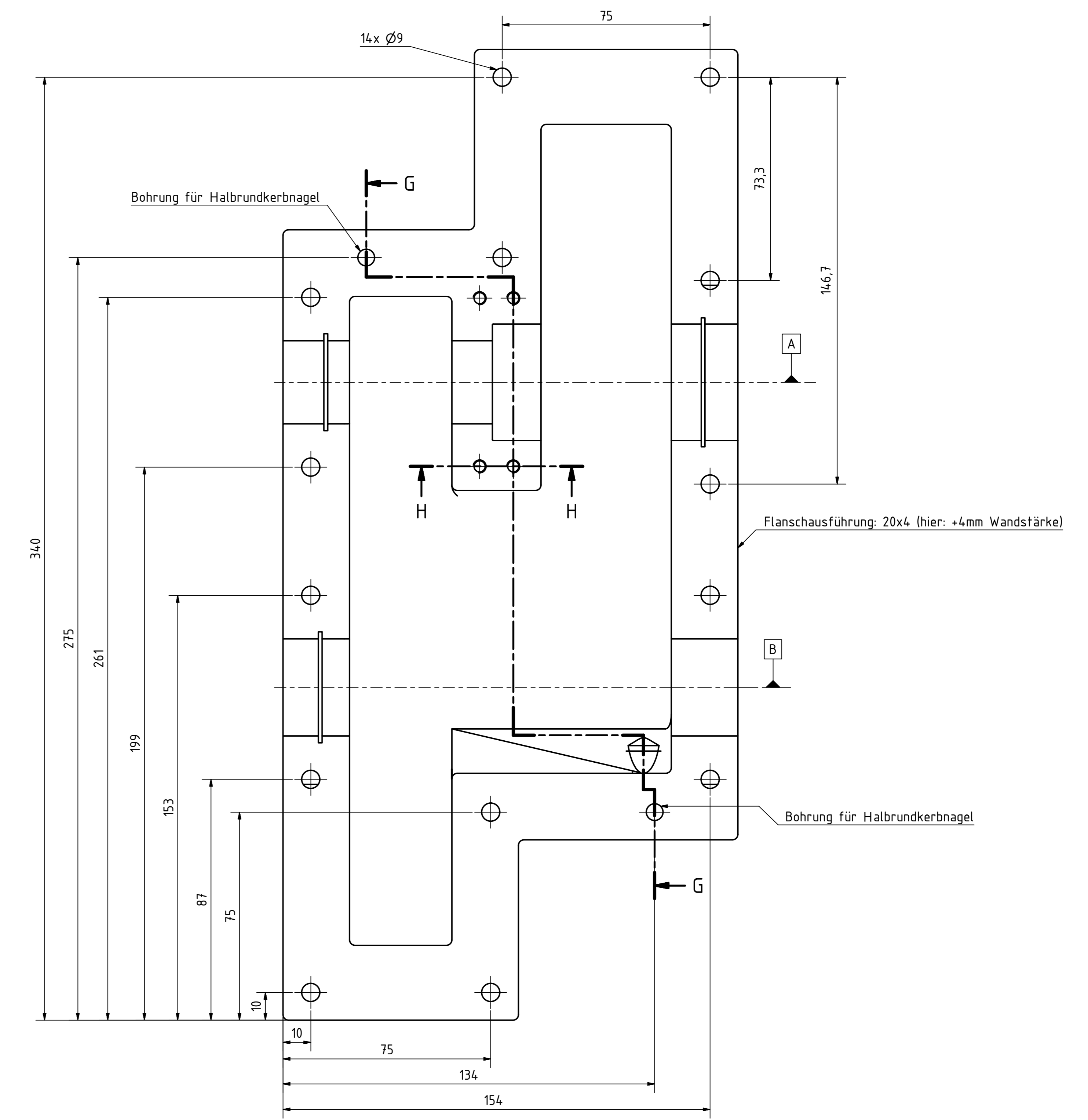
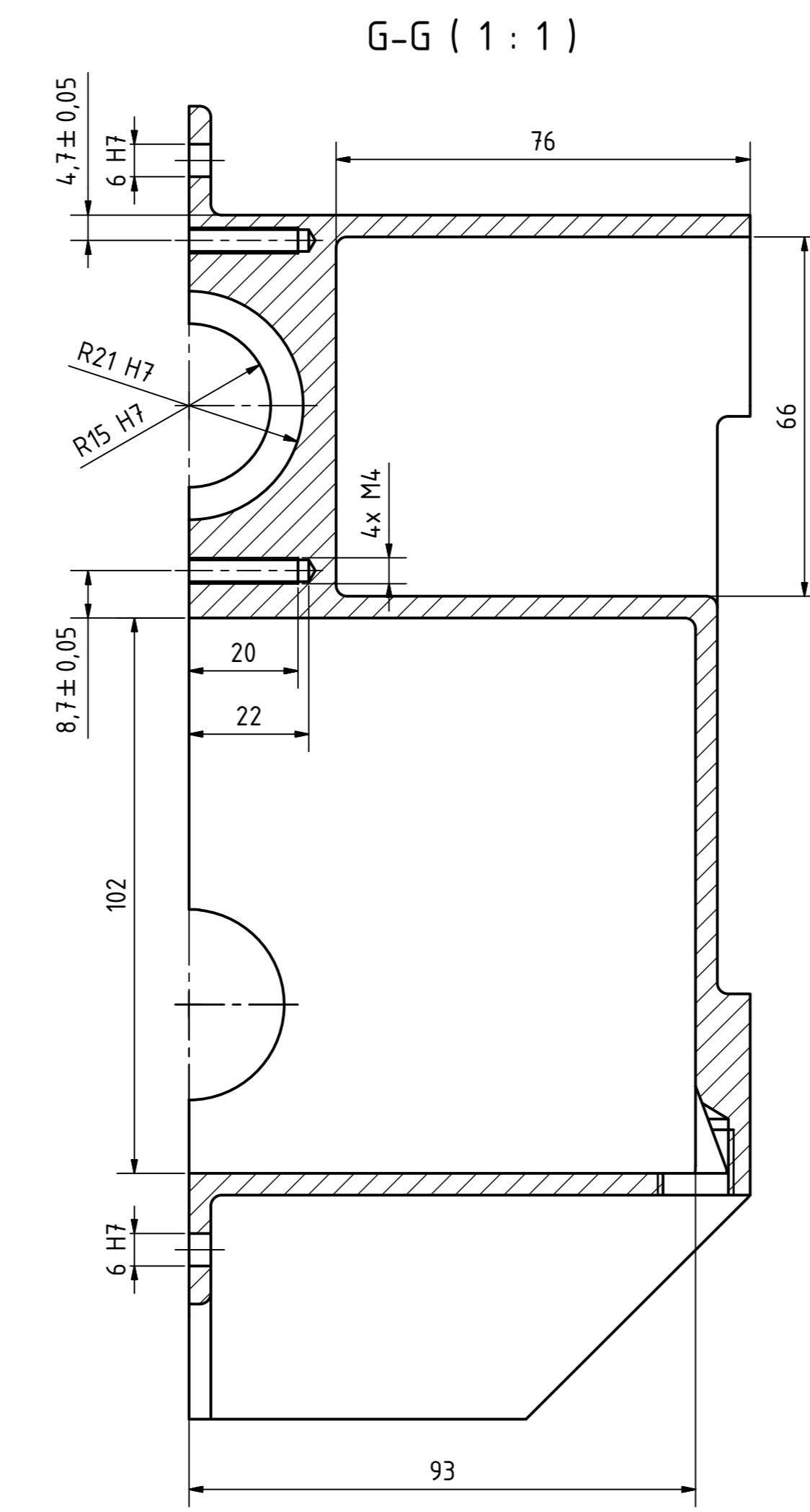
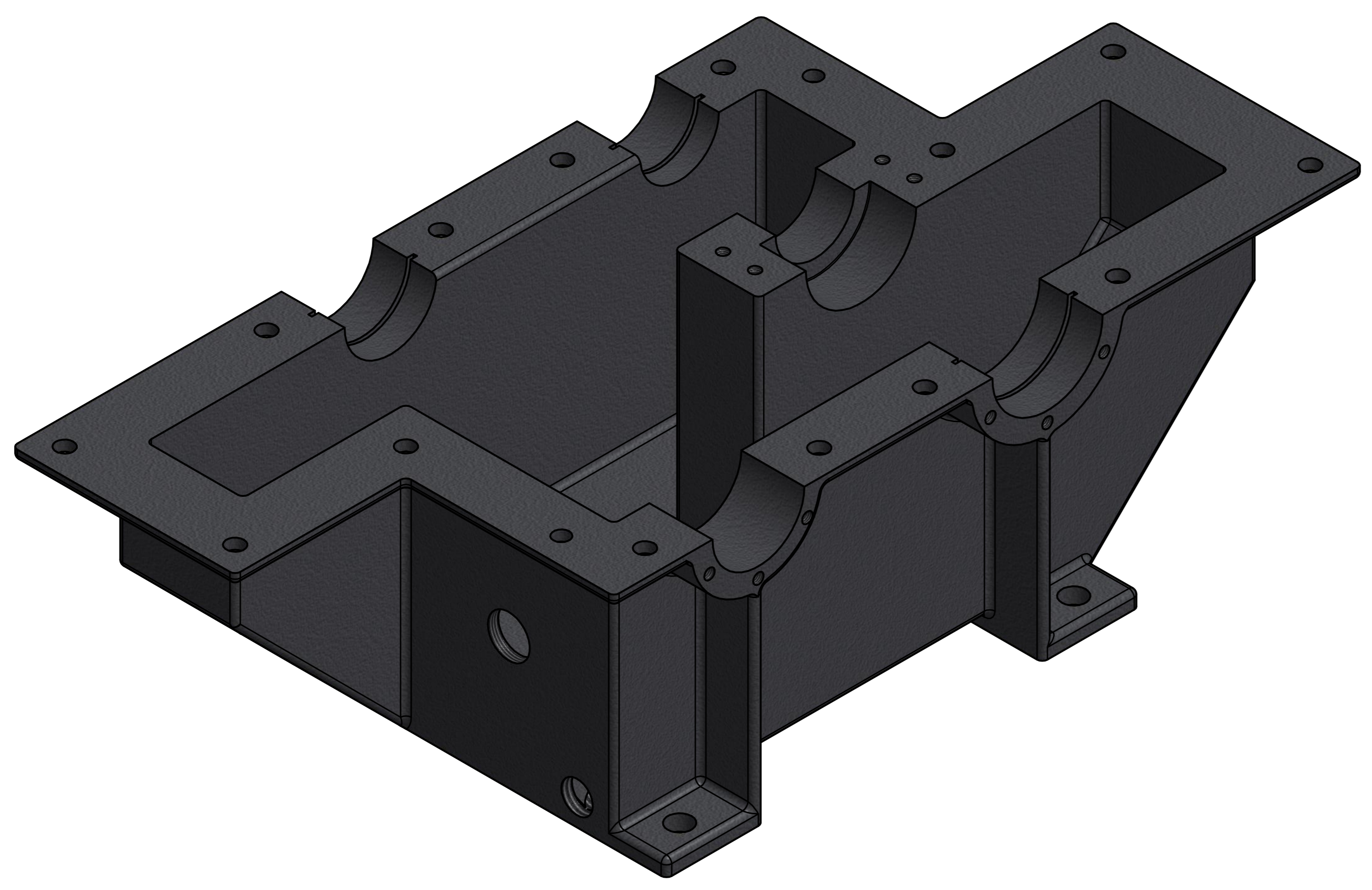
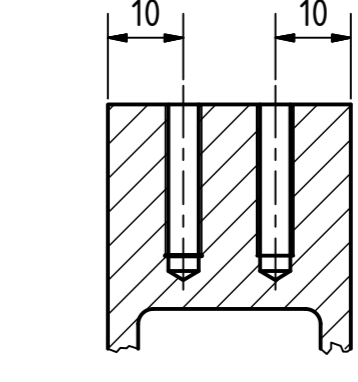


E (1:1)  
Ansicht Lageraufnahme - Antriebswelle



H-H (1:1)



$\sqrt{2} \sqrt{Ra 3,2}$  gerieben  
 $\sqrt{Ra 0,8}$

Gussradien R = 2mm  
 Wandstärke des Gehäuses (außer bemaßt) = 4mm  
 Alle unbemaßten Kanten gratfrei ausführen!

| Toleranzabmaße  |           |            |  |
|-----------------|-----------|------------|--|
| Toleriertes Maß | Höchstmaß | Mindestmaß |  |
| R17,5 H7        | 17,518    | 17,500     |  |
| R21 H7          | 21,021    | 21,000     |  |
| D6 H7           | 6,012     | 6,000      |  |
| 2,5 h9          | 2,500     | 2,475      |  |
| 1,35 H9         | 1,375     | 1,350      |  |

| TEIL | BEZEICHNUNG | ANZAHL | BESCHREIBUNG              | NORM/ZEICHG NR      | WERKSTOFF    | ROHMABE |
|------|-------------|--------|---------------------------|---------------------|--------------|---------|
| 15   | Gehäuse     | 1      | Gussgehäuse (Kugelgrafit) | ONORM EN 1563       | EN-GJS-500-7 |         |
|      |             |        | Allg.Tol. H 1:1           | HTL1 Klagenfurt     |              |         |
|      |             |        | F Datum                   | Gehäuse - Unterteil |              |         |
|      |             |        | Notiz                     | 3ABMI               |              |         |
|      |             |        | Bohrung                   | Stirnradgetriebe    |              |         |
|      |             |        | Gravur                    | 1.01                |              |         |
|      |             |        | Druck                     | A0                  |              |         |